

WAAS CH 53740 W20A	APP CRS 201°	Rwy Idg TDZE Apt Elev	4700 117 117
--	------------------------	-----------------------------	---

RNAV (GPS) RWY 20

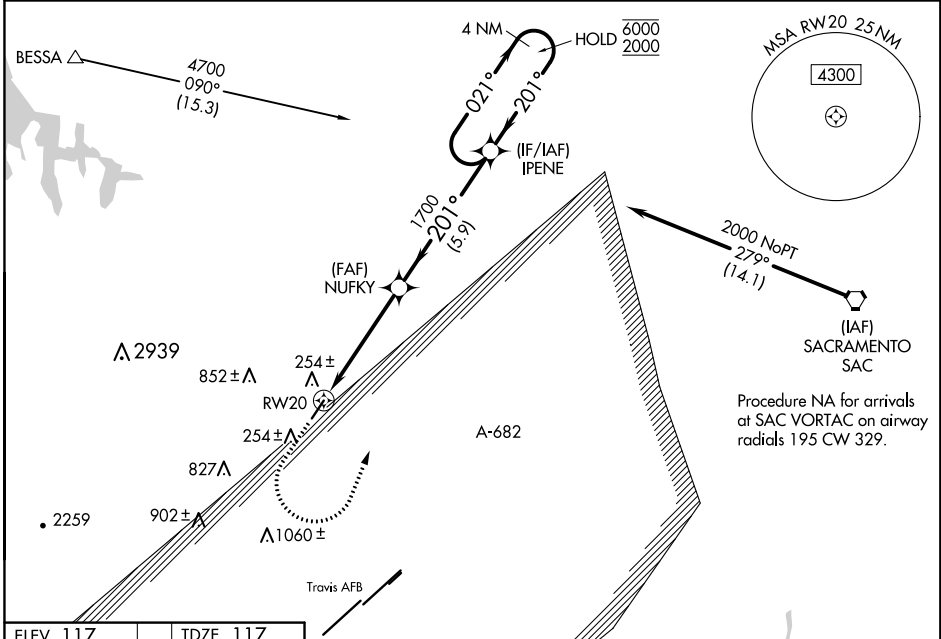
NUT TREE (VCB)

RNP APCH.

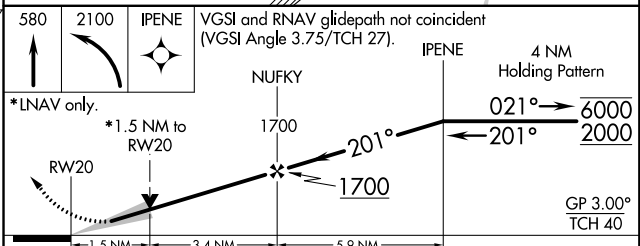
▽ Circling NA west of Rwy 2-20. Circling Rwy 2 NA at night.
⚠ For uncompensated Baro-VNAV systems, LNAV/VNAV NA below -3°C or above 54°C.

MISSED APPROACH: (Do not exceed 220K until IPENE) Climb to 580 then climbing left turn to 2100 direct IPENE and hold.
 # Missed approach requires minimum climb of 229 feet per NM to 1300.

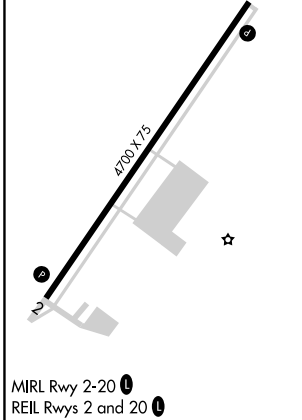
ASOS 134.75	TRAVIS APP CON 128.4 281.45	CTAF 122.85
-----------------------	---------------------------------------	-----------------------



ELEV 117	TDZE 117
----------	----------



CATEGORY	A	B	C	D
LPV DA#	367-3/4		250 (300-3/4)	
LPV DA	384-7/8		267 (300-7/8)	
LNAV/VNAV DA	614-1 3/8		497 (500-1 3/8)	
LNAV MDA	720-1	603 (700-1)	720-1 3/4	603 (700-1 3/4)
C CIRCLING	720-1	603 (700-1)	960-2 1/2 843 (900-2 1/2)	1480-3 1363 (1400-3)



SW-2, 27 JAN 2022 to 24 FEB 2022

SW-2, 27 JAN 2022 to 24 FEB 2022

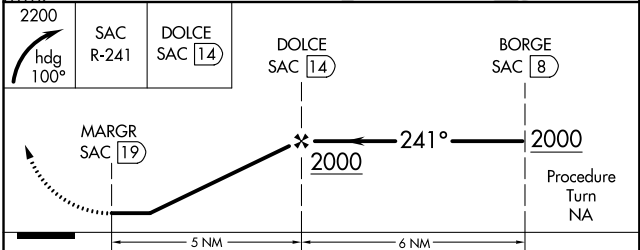
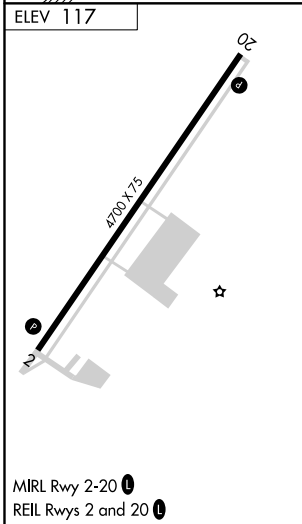
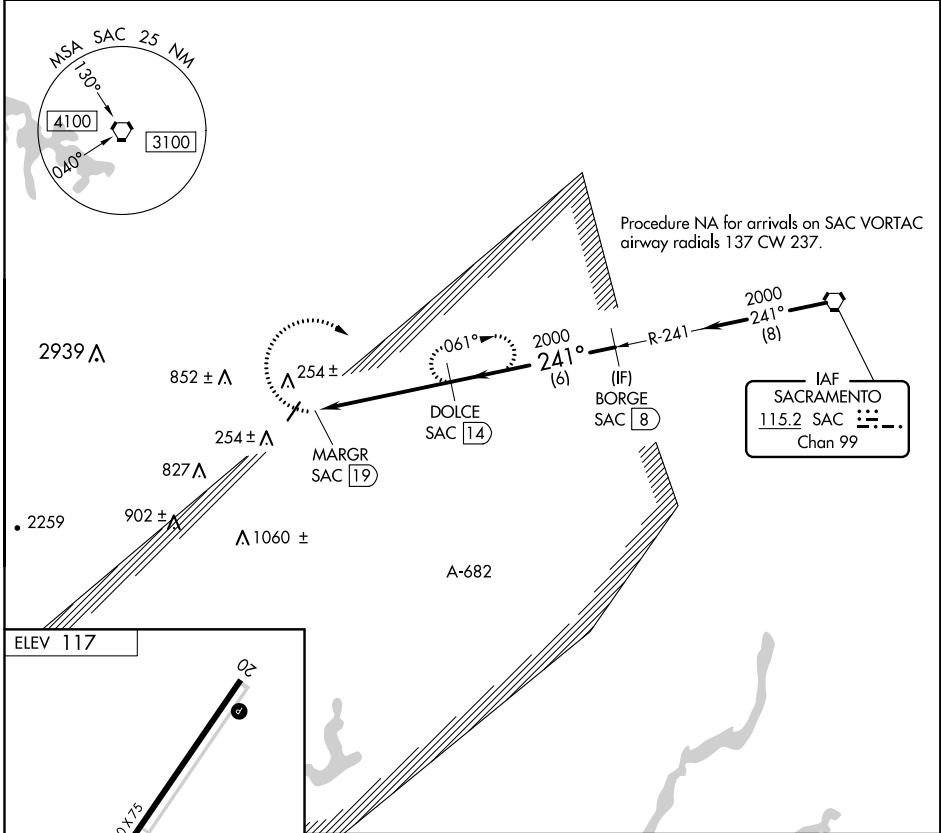
VORTAC SAC 115.2 Chan 99	APP CRS 241°	Rwy Idg TDZE Apt Elev	N/A N/A 117
--	------------------------	-----------------------------	--

VOR-A
NUT TREE (VCB)

⚠ Rwy 2 helicopter visibility reduction below 1 SM NA.
DME required.
Circling Rwy 2 NA at night.
Circling NA west of Rwy 2-20.

MISSED APPROACH: Climbing right turn to 2200 on heading 100° and SAC R-241 to DOLCE/14 DME and hold.

ASOS 134.75	TRAVIS APP CON 128.4 281.45	CTAF 122.85
-----------------------	---------------------------------------	-----------------------



CATEGORY	A	B	C	D
C CIRCLING	920-1	803 (900-1)	960-2½ 843 (900-2½)	1360-3 1243 (1300-3)

SW-2, 27 JAN 2022 to 24 FEB 2022

SW-2, 27 JAN 2022 to 24 FEB 2022