

LAS VEGAS APP CON  
118.4 307.25  
HND ATIS  
120.775  
VGT ATIS  
118.05  
HENDERSON TOWER \*  
125.1  
NORTH LAS VEGAS TOWER \*  
125.7 360.75

NORTH LAS VEGAS

HENDERSON EXEC

NTND0  
7000

Ldg KHND, KVGT

KEEKO  
7200

KONNG  
10000 250K

TETRS  
13000

10000  
\*7900  
291°  
(46)

BYSEN  
FL240

FL240  
270°  
(34)

GUILE

MISEN  
13000  
\*6500  
081°  
(25)

LINCK

13000  
\*9200  
064°  
(41)

ZELMA  
15000  
13000  
\*7400  
012°  
(29)

JOTNU  
15000  
\*6900  
030°  
(18)

TWENTYNINE PALMS  
TNP

NOTE: RADAR required.  
NOTE: RNAV 1.  
NOTE: DME/DME/IRU/ or GPS required.  
NOTE: TNP transition: for non-GPS equipped aircraft  
IPL and TNP DMEs must be operational.

NOTE: Chart not to scale.

ARRIVAL ROUTE DESCRIPTION

GUILE TRANSITION (GUILE.NTND01)

MISEN TRANSITION (MISEN.NTND01)

TWENTYNINE PALMS TRANSITION (TNP.NTND01)

LANDING KHND/KVGT: From KONNG on track 328°  
to cross KEEKO at or above 7200, then on track 328°  
to cross NTND0 at 7000, then on track 304°. Expect  
RADAR vectors to final approach course.

SW-4, 22 APR 2021 to 20 MAY 2021

SW-4, 22 APR 2021 to 20 MAY 2021

NELLIS APP CON  
118.125 291.725  
ATIS  
118.05  
NORTH LAS VEGAS TOWER ★  
125.7 360.75

(FLCHR:FLCHR1) 21056  
FLCHR ONE ARRIVAL (RNAV)

AL-6970 (FAA)

NORTH LAS VEGAS (VGT)  
LAS VEGAS, NEVADA

N

FLCHR

131°  
(26)

OPNOW

094°  
(32)

GEOOF

081°  
(12)

KEEKE  
10500 250K  
(7)

101°  
(7)

ECAKO  
9000 230K  
Ldg KVGT

117°

- NOTE: RADAR required.
- NOTE: RNAV 1.
- NOTE: GPS required.
- NOTE: Turbojet and turboprop aircraft only.
- NOTE: Chart not to scale.

### ARRIVAL ROUTE DESCRIPTION

From FLCHR on track 131° to OPNOW, then on track 094° to GEOOF, then on track 081° to cross KEEKE at or above 10500 and at or below 250K, then on track 101° to cross ECAKO at 9000 and at or below 230K, then on track 117°. Expect RADAR vectors to final approach course.

FLCHR ONE ARRIVAL (RNAV)  
(FLCHR:FLCHR1) 25FEB21

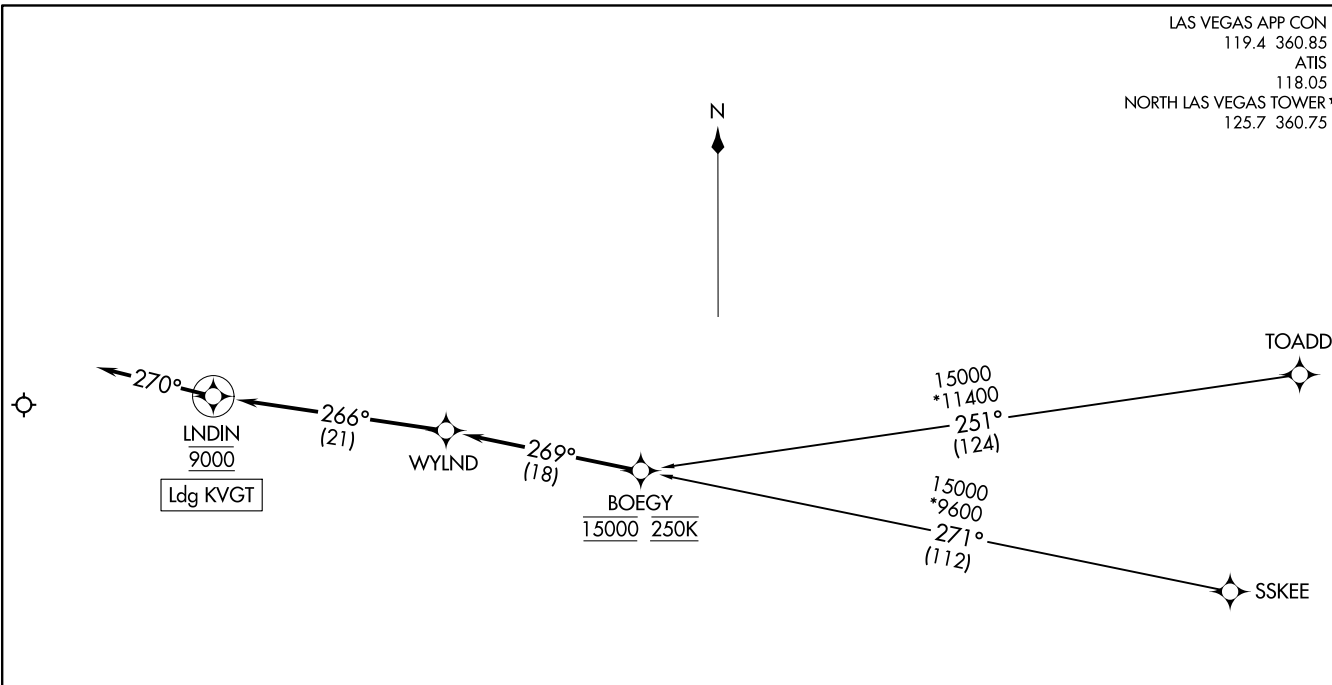
LAS VEGAS, NEVADA  
NORTH LAS VEGAS (VGT)

LAS VEGAS APP CON  
119.4 360.85  
ATIS  
118.05  
NORTH LAS VEGAS TOWER ★  
125.7 360.75

(BOEGY.WYLND1) 21056

AL-6970 (FAA)

NORTH LAS VEGAS (TGT)  
LAS VEGAS, NEVADA



**ARRIVAL ROUTE DESCRIPTION**

SSKEE TRANSITION (SSKEE.WYLND1)

TOADD TRANSITION (TOADD.WYLND1)

From BOEGY on track 269° to WYLND, then on track 266° to cross LNDIN at 9000, then on track 270°. Expect RADAR vectors to final approach course.

- NOTE: RADAR required.
- NOTE: RNAV 1.
- NOTE: DME/DME/IRU or GPS required.
- NOTE: For non-GPS equipped aircraft, BLD, DRK, EED, FLG, GCN, IGM, PGA, PGS, and TBC DMEs must be operational.

NOTE: Chart not to scale.

WYLN D ONE ARRIVAL (RNAV)  
(BOEGY.WYLND1) 25FEB21

LAS VEGAS, NEVADA  
NORTH LAS VEGAS (TGT)