

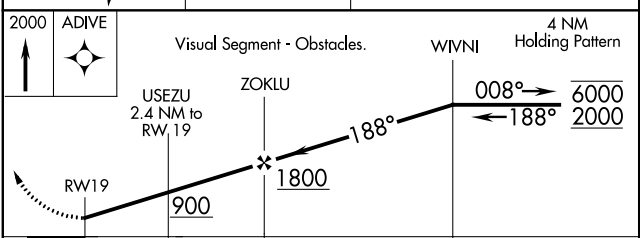
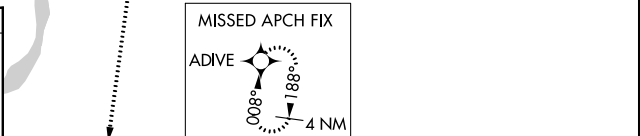
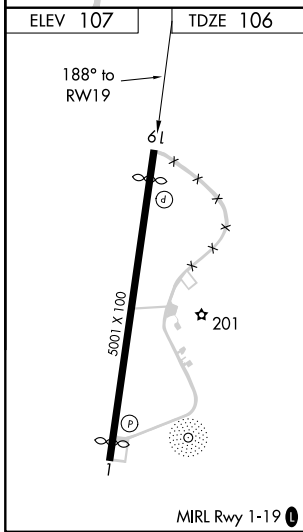
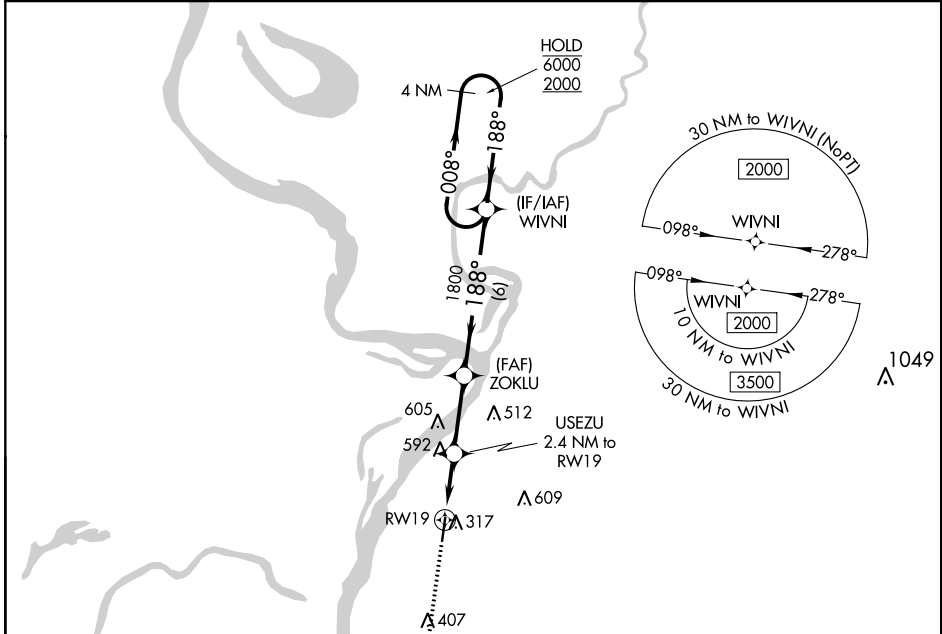
WAAS CH <b>60932</b> <b>W19A</b>	APP CRS <b>188°</b>	Rwy Idg TDZE <b>106</b> Apt Elev <b>107</b>	<b>4529</b>
--	------------------------	---	-------------

# RNAV (GPS) RWY 19

VICKSBURG MUNI (VKS)

RNP APCH.	<p>⚠ Circling NA for Cat D west of Rwy 1-19. Procedure NA at night. Rwy 19 helicopter visibility reduction below 1 SM NA.</p>	<p>MISSED APPROACH: Climb to 2000 direct ADIVE and hold.</p>
-----------	---	--

AWOS-3 <b>118.85</b>	MEMPHIS CENTER <b>132.5 259.1</b>	UNICOM <b>122.8 (CTAF)</b>
-------------------------	--------------------------------------	-------------------------------



CATEGORY	A	B	C	D
LP MDA	660-1	554 (600-1)	660-1 $\frac{3}{8}$	554 (600-1 $\frac{3}{8}$ )
LNAV MDA	860-1 754 (800-1)	860-1 $\frac{1}{4}$ 754 (800-1 $\frac{1}{4}$ )	860-2	754 (800-2)
CIRCLING	860-1 753 (800-1)	860-1 $\frac{1}{4}$ 753 (800-1 $\frac{1}{4}$ )	860-2 $\frac{1}{4}$ 753 (800-2 $\frac{1}{4}$ )	860-2 $\frac{1}{2}$ 753 (800-2 $\frac{1}{2}$ )

SC-4, 06 DEC 2018 to 03 JAN 2019

SC-4, 06 DEC 2018 to 03 JAN 2019

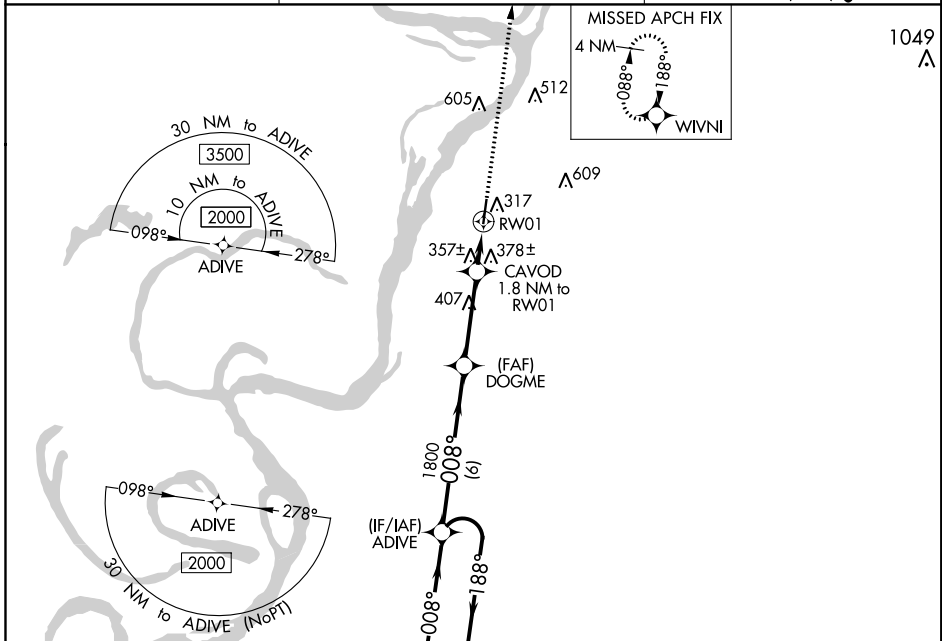
WAAS CH <b>66030</b> <b>W01A</b>	APP CRS <b>008°</b>	Rwy Idg TDZE <b>104</b> Apt Elev <b>107</b>	<b>4702</b>
--	------------------------	---	-------------

# RNAV (GPS) RWY 1

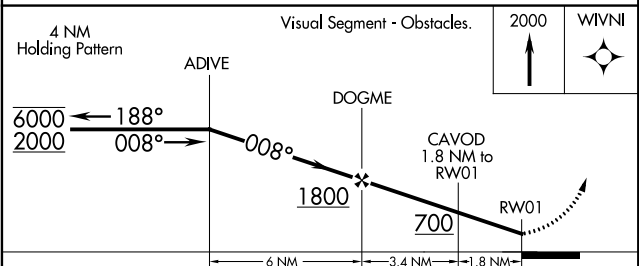
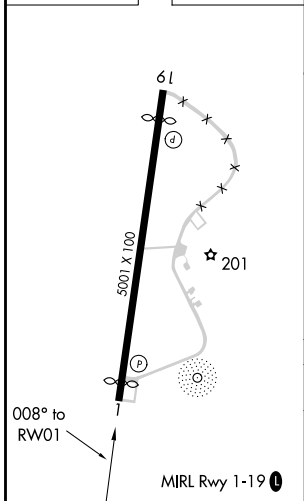
VICKSBURG MUNI (VKS)

RNP APCH.	MISSED APPROACH: Climb to 2000 direct WIVNI and hold.
<p>▼ Circling NA for Cat D west of Rwy 1-19. Procedure NA at night.</p> <p>▲ Rwy 1 helicopter visibility reduction below 1 SM NA.</p>	

AWOS-3 <b>118.85</b>	MEMPHIS CENTER <b>132.5 259.1</b>	UNICOM <b>122.8 (CTAF) 0</b>
-------------------------	--------------------------------------	---------------------------------



ELEV 107	TDZE 104
----------	----------



CATEGORY	A	B	C	D
LP MDA	620-1	516 (600-1)	620-1 $\frac{3}{8}$	516 (600-1 $\frac{1}{2}$ )
LNAV MDA	640-1	536 (600-1)	640-1 $\frac{1}{2}$	536 (600-1 $\frac{1}{2}$ )
CIRCLING	700-1	593 (600-1)	700-1 $\frac{1}{2}$ 593 (600-1 $\frac{1}{2}$ )	860-2 $\frac{1}{2}$ 753 (800-2 $\frac{1}{2}$ )

TAKEOFF MINIMUMS, (OBSTACLE) DEPARTURE PROCEDURES, AND DIVERSE VECTOR AREA (RADAR VECTORS) INSTRUMENT APPROACH PROCEDURE CHARTS

18340

IFR TAKEOFF MINIMUMS AND (OBSTACLE) DEPARTURE PROCEDURES

Civil Airports and Selected Military Airports

ALL USERS: Airports that have Departure Procedures (DPs) designed specifically to assist pilots in avoiding obstacles during the climb to the minimum enroute altitude, and/or airports that have civil IFR takeoff minimums other than standard, are listed below. Takeoff Minimums and Departure Procedures apply to all runways unless otherwise specified. An entry may also be listed that contains only Takeoff Obstacle Notes. Altitudes, unless otherwise indicated, are minimum altitudes in MSL.

DPs specifically designed for obstacle avoidance are referred to as Obstacle Departure Procedures (ODPs) and are textually described below, or published separately as a graphic procedure. If the ODP is published as a graphic procedure, its name will be listed below, and it can be found in either this volume (civil), or the applicable military volume, as appropriate. Users will recognize graphic obstacle DPs by the term "(OBSTACLE)" included in the procedure title; e.g., TETON TWO (OBSTACLE). If not specifically assigned an ODP, SID, or radar vector as part of an IFR clearance, an ODP may be required to be flown for obstacle clearance, even though not specifically stated in the IFR clearance. When doing so in this manner, ATC should be informed when the ODP being used contains a specified route to be flown, restrictions before turning, and/or altitude restrictions.

Some ODPs, which are established solely for obstacle avoidance, require a climb in visual conditions to cross the airport, a fix, or a NAVAID in a specified direction, at or above a specified altitude. These procedures are called Visual Climb Over Airport (VCOA). To ensure safe and efficient operations, the pilot must verbally request approval from ATC to fly the VCOA when requesting their IFR clearance.

At some locations where an ODP has been established, a diverse vector area (DVA) may be created to allow radar vectors to be used in lieu of an ODP. DVA information will state that headings will be as assigned by ATC and climb gradients, when applicable, will be published immediately following the specified departure procedure.

Graphic DPs designed by ATC to standardize traffic flows, ensure aircraft separation and enhance capacity are referred to as "Standard Instrument Departures (SIDs)". SIDs also provide obstacle clearance and are published under the appropriate airport section. ATC clearance must be received prior to flying a SID.

CIVIL USERS NOTE: Title 14 Code of Federal Regulations Part 91 prescribes standard takeoff rules and establishes takeoff minimums for certain operators as follows: (1) For aircraft, other than helicopters, having two engines or less – one statute mile visibility. (2) For aircraft having more than two engines – one-half statute mile visibility. (3) For helicopters – one-half statute mile visibility. These standard minima apply in the absence of any different minima listed below.

MILITARY USERS NOTE: Civil (nonstandard) takeoff minima are published below. For military takeoff minima, refer to appropriate service directives.

NAME TAKEOFF MINIMUMS

NAME TAKEOFF MINIMUMS

ABBEVILLE, LA

ABERDEEN/AMORY, MS

ABBEVILLE CHRIS CRUSTA MEMORIAL

MONROE COUNTY (M40)

(1YA)

TAKEOFF MINIMUMS AND (OBSTACLE)

TAKEOFF MINIMUMS AND (OBSTACLE)

DEPARTURE PROCEDURES

DEPARTURE PROCEDURES

ORIG 07242 (FAA)

ORIG 11237 (FAA)

TAKEOFF OBSTACLE NOTES: Rwy 18, pole 460' from DER, 365' left of centerline, 25' AGL/254' MSL. Trees beginning 7' from DER, 61' left of centerline, up to 100' AGL/310' MSL. Trees beginning 839' from DER, 83' right of centerline, up to 116' AGL/316' MSL. Rwy 36, trees beginning 241' from DER, 490' left of centerline, up to 83' AGL/303' MSL. Trees beginning 27' from DER, 426' right of centerline, up to 92' AGL/312' MSL. Tree 3078' from DER, 276' right of centerline, 81' AGL/301' MSL.

TAKEOFF OBSTACLE NOTES: Rwy 16, trees and poles beginning 1' from DER, 36' left of centerline, up to 98' AGL/112' MSL. Trees and poles beginning 32' from DER, 14' right of centerline, up to 81' AGL/95' MSL. Rwy 34, trees beginning 121' from DER, 275' right of centerline, up to 15' AGL/29' MSL. Trees and pole beginning 1110' from DER, 625' left of centerline, up to 80' AGL/95' MSL. Transmission tower 4414' from DER, 724' left of centerline, 114' AGL/129' MSL.

06 DEC 2018 to 03 JAN 2019

06 DEC 2018 to 03 JAN 2019

18340

SC-4

**TAKEOFF MINIMUMS, (OBSTACLE) DEPARTURE PROCEDURES, AND  
DIVERSE VECTOR AREA (RADAR VECTORS)**

18340

**ALEXANDRIA, LA****ALEXANDRIA INTL (AEX)****TAKEOFF MINIMUMS AND (OBSTACLE)****DEPARTURE PROCEDURES****ORIG 07242 (FAA)**

**TAKEOFF OBSTACLE NOTES:** **Rwy 18**, multiple trees and bush beginning 897' from DER, 210' right of centerline, up to 83' AGL/173' MSL. Multiple trees and fence beginning 91' from DER, 326' left of centerline, up to 80' AGL/167' MSL. **Rwy 32**, multiple trees beginning 1537' from DER, 662' right of centerline, up to 80' AGL/162' MSL. **Rwy 36**, multiple trees beginning 1298' from DER, 25' left of centerline, up to 90' AGL/170' MSL. Multiple trees beginning 1340' from DER, 155' right of centerline, up to 90' AGL/169' MSL. Antenna, 5041' from DER, 793' left of centerline, 140' AGL/216' MSL.

**ESLER RGNL (ESF)****TAKEOFF MINIMUMS AND (OBSTACLE)****DEPARTURE PROCEDURES****AMDT 2 10098 (FAA)**

**TAKEOFF OBSTACLE NOTES:** **Rwy 9**, multiple trees beginning 697' from DER, 612' right of centerline, up to 83' AGL/153' MSL. Antenna 2236' from DER, 912' left of centerline, 78' AGL/158' MSL. **Rwy 14**, trees 928' from DER, 606' left of centerline, 90' AGL/160' MSL. Trees 2003' from DER, 141' left of centerline, 98' AGL/168' MSL. Multiple trees beginning 941' from DER, 257' right of centerline, up to 121' AGL/231' MSL. **Rwy 27**, light 38' from DER, 148' right of centerline, 8' AGL/98' MSL. Pole 650' from DER, 649' right of centerline, 39' AGL/129' MSL. Trees 3290' from DER, 984' right of centerline, 121' AGL/211' MSL. **Rwy 32**, rising terrain from 197' from DER through 1886' from DER, up to 0' AGL/165' MSL. Multiple trees and fence beginning 1959' from DER, 8' left of centerline, up to 123' AGL/236' MSL. Antenna 148' from DER, 417' left of centerline, 15' AGL/125' MSL. Trees 1862' from DER, 200' right of centerline, 79' AGL/219' MSL.

**BASTROP, LA****MOREHOUSE MEMORIAL (BQP)****TAKEOFF MINIMUMS AND (OBSTACLE)****DEPARTURE PROCEDURES****ORIG-A 13318 (FAA)**

**TAKEOFF OBSTACLE NOTES:** **Rwy 16**, trees beginning 1033' from DER, 591' right of centerline, up to 90' AGL/247' MSL. Trees beginning 152' from DER, 402' left of centerline, up to 90' AGL/256' MSL. **Rwy 34**, tree 394' right of DER, 53' AGL/218' MSL. Trees beginning 2627' from DER, 119' left of centerline, up to 123' AGL/248' MSL. Power lines 1700' from DER, 70' AGL/214' MSL.

**BATESVILLE, MS****PANOLA COUNTY (PMU)****TAKEOFF MINIMUMS AND (OBSTACLE)****DEPARTURE PROCEDURES****AMDT 1 13234 (FAA)**

**DEPARTURE PROCEDURE:** **Rwy 1**, climb heading 011° to 800 before proceeding on course. **Rwy 19**, climb heading 191° to 1000 before proceeding on course.

**TAKEOFF OBSTACLE NOTES:** **Rwy 1**, trees beginning 72' from DER, 157' left of centerline, up to 80' AGL/283' MSL. Trees beginning 129' from DER, 214' right of centerline, up to 100' AGL/305' MSL. **Rwy 19**, trees beginning 478' from DER, 19' left of centerline, up to 100' AGL/357' MSL. Trees beginning 945' from DER, 4' right of centerline, up to 100' AGL/367' MSL. Poles beginning 49' from DER, 378' left of centerline, up to 35' AGL/298' MSL. Pole 2102' from DER, 69' right of centerline, 34' AGL/286' MSL. Vehicle on road 220' from DER, 294' left of centerline, 15' AGL/237' MSL. Vehicle on road 2233' from DER, 493' right of centerline, 15' AGL/281' MSL. Terrain 17' from DER, 36' left of centerline, 259' MSL. Terrain 59' from DER, 210' right of centerline, 224' MSL. Navaid 267' from DER, 257' left of centerline, 23' AGL/241' MSL. Building 1995' from DER, 141' right of centerline, 15' AGL/279' MSL.

06 DEC 2018 to 03 JAN 2019

06 DEC 2018 to 03 JAN 2019

**TAKEOFF MINIMUMS, (OBSTACLE) DEPARTURE PROCEDURES, AND  
DIVERSE VECTOR AREA (RADAR VECTORS)**

18340

SC-4

**TAKEOFF MINIMUMS, (OBSTACLE) DEPARTURE PROCEDURES, AND DIVERSE VECTOR AREA (RADAR VECTORS)**

18340

**BATON ROUGE, LA**

**BATON ROUGE METROPOLITAN, RYAN FIELD (BTR)**

**TAKEOFF MINIMUMS AND (OBSTACLE) DEPARTURE PROCEDURES**  
AMDT 1B 15260 (FAA)

**TAKEOFF MINIMUMS: Rwy 22R**, 300-2¼ or std. w/ min. climb of 229' per NM to 500.

**DEPARTURE PROCEDURE: Rwy 22L**, climb heading 220° to 2000 before proceeding on course. **Rwy 22R**, climb heading 220° to 2000 before proceeding on course.

**TAKEOFF OBSTACLE NOTES: Rwy 4L**, vehicles on roadway 210' from DER, 482' right of centerline, 15' AGL/79' MSL. Poles 631' from DER, 469' left of centerline, 23' AGL/92' MSL. Trees beginning 1180' from DER, 153' left of centerline, up to 75' AGL/144' MSL. Trees beginning 1380' from DER, 7' right of centerline, up to 79' AGL/148' MSL. Transmission tower 2516' from DER, 897' left of centerline, 80' AGL/149' MSL. **Rwy 4R**, vehicles on roadway 5' from DER, 392' right of centerline, up to 15' AGL/84' MSL. Trees beginning 207' from DER, 128' right of centerline, up to 85' AGL/153' MSL. **Rwy 13**, pole 300' from DER, 549' left of centerline, 22' AGL/91' MSL. Vehicles on roadway 342' from DER, left and right of centerline, up to 15' AGL/84' MSL. Antenna on building 479' from DER, 247' right of centerline, 22' AGL/91' MSL. Sign 968' from DER, 741' right of centerline, 31' AGL/100' MSL. Trees beginning 1395' from DER, 114' left of centerline, up to 97' AGL/166' MSL. Trees beginning 1807' from DER, 203' right of centerline, up to 95' AGL/164' MSL. Water tank 1631' from DER, 903' left of centerline, 50' AGL/117' MSL. **Rwy 22L**, trees beginning 2140' from DER, 52' left of centerline, up to 90' AGL/156' MSL. Tree 2371' from DER, 60' right of centerline, 69' AGL/135' MSL. Sign 3507' from DER, 284' left of centerline, 77' AGL/163' MSL. **Rwy 22R**, poles beginning 431' from DER, 81' right of centerline, up to 55' AGL/120' MSL. Building 503' from DER, 481' right of centerline, 14' AGL/79' MSL. Poles beginning 1063' from DER, 77' left of centerline, up to 93' AGL/158' MSL. Trees beginning 1210' from DER, 352' left of centerline, up to 103' AGL/168' MSL. Trees beginning 444' from DER, 108' right of centerline, up to 89' AGL/154' MSL. Stacks beginning 9852' from DER, 2390' left of centerline, up to 311' AGL/366' MSL. **Rwy 31**, fence 191' from DER, 468' right of centerline, 7' AGL/73' MSL. Trees beginning 814' from DER, 120' right of centerline, up to 37' AGL/103' MSL. Trees beginning 1076' from DER, 310' left of centerline, up to 70' AGL/136' MSL. Poles 1353' from DER, 287' right of centerline, up to 57' AGL/123' MSL. Tank 1862' from DER, 868' right of centerline, 53' AGL/119' MSL. Poles beginning 2507' from DER, 274' left of centerline, up to 76' AGL/142' MSL.

**BOGALUSA, LA**

**GEORGE R CARR MEMORIAL AIR FIELD (BXA)**

**TAKEOFF MINIMUMS AND (OBSTACLE) DEPARTURE PROCEDURES**  
AMDT 3A 15064 (FAA)

**TAKEOFF MINIMUMS: Rwy 18**, 500-3 or std. w/min. climb of 253' per NM to 800.

**TAKEOFF OBSTACLE NOTES: Rwy 18**, trees beginning 1273' from DER, 359' right of centerline, up to 89' AGL/200' MSL. Trees beginning 1463' from DER, 333' left of centerline, up to 92' AGL/203' MSL. Water tower 2734' from DER, 1047' left of centerline, 151' AGL/262' MSL. Plant 1.6 NM from DER, 2404' left of centerline, 247' AGL/357' MSL. Stack 1.6 NM from DER, 2143' left of centerline, 247' AGL/357' MSL. **Rwy 36**, building 12' from DER, 305' right of centerline, 11' AGL/130' MSL. Trees beginning 486' from DER, 459' left of centerline, up to 98' AGL/217' MSL.

**BOONEVILLE/BALDWYN, MS**

**BOONEVILLE/BALDWYN (8M1)**

**TAKEOFF MINIMUMS AND (OBSTACLE) DEPARTURE PROCEDURES**  
ORIG 07298 (FAA)

**TAKEOFF OBSTACLE NOTES: Rwy 15**, trees 1250' from DER, 100' right of centerline, 100' AGL/465' MSL. Trees 3847' from DER, 127' left of centerline, 100' AGL/519' MSL. **Rwy 33**, road and vehicle 8' from DER, 188' right of centerline, 15' AGL/394' MSL.

**BROOKHAVEN, MS**

**BROOKHAVEN-LINCOLN COUNTY (1R7)**

**TAKEOFF MINIMUMS AND (OBSTACLE) DEPARTURE PROCEDURES**  
AMDT 1 18172 (FAA)

**TAKEOFF OBSTACLE NOTES: Rwy 4**, tree, vehicle on road, pole, building beginning 23' from DER, 243' left of centerline, up to 524' MSL. Tree 42' from DER, 360' right of centerline, 531' MSL. Tree, pole, building beginning 141' from DER, 194' left of centerline, up to 548' MSL. Tree 191' from DER, 477' right of centerline, 536' MSL. Tree, vehicle on road, building, pole beginning 239' from DER, 26' left of centerline, up to 568' MSL. Tree, pole, building beginning 340' from DER, 17' right of centerline, up to 546' MSL. Tree, pole, tower beginning 904' from DER, 120' right of centerline, up to 561' MSL. Tree 1271' from DER, 558' right of centerline, 562' MSL. Tree, pole beginning 1293' from DER, 283' right of centerline, up to 570' MSL. Trees beginning 1537' from DER, 375' right of centerline, up to 574' MSL. Trees beginning 1830' from DER, 307' left of centerline, up to 569' MSL. Trees beginning 1868' from DER, 382' right of centerline, up to 580' MSL. Trees beginning 1970' from DER, 86' left of centerline, up to 585' MSL. Trees beginning 2093' from DER, 27' right of centerline, up to 584' MSL. Trees beginning 2498' from DER, 18' right of centerline, up to 586' MSL. Trees beginning 2734' from DER, 134' left of centerline, up to 586' MSL. Trees beginning 2924' from DER, 101' left of centerline, up to 587' MSL. **Rwy 22**, tree, pole beginning 11' from DER, 40' right of centerline, up to 561' MSL. Tree, pole beginning 126' from DER, 20' left of centerline, up to 557' MSL. Tree, pole beginning 881' from DER, 10' left of centerline, up to 558' MSL. Tree 1088' from DER, 543' left of centerline, 567' MSL. Tree, pole beginning 1094' from DER, 137' left of centerline, up to 583' MSL. Tree, pole beginning 1253' from DER, 47' left of centerline, up to 586' MSL. Transmission line, pole, tree beginning 2336' from DER, 39' right of centerline, up to 90' AGL/580' MSL.

06 DEC 2018 to 03 JAN 2019

06 DEC 2018 to 03 JAN 2019

**TAKEOFF MINIMUMS, (OBSTACLE) DEPARTURE PROCEDURES, AND DIVERSE VECTOR AREA (RADAR VECTORS)**

18340

SC-4

# TAKEOFF MINIMUMS, (OBSTACLE) DEPARTURE PROCEDURES, AND DIVERSE VECTOR AREA (RADAR VECTORS)

18340

## BUNKIE, LA

### BUNKIE MUNI (2R6)

TAKEOFF MINIMUMS AND (OBSTACLE)  
DEPARTURE PROCEDURES  
ORIG 09127 (FAA)

TAKEOFF OBSTACLE NOTES: **Rwy 18**, trees 1404' from DER, 506' right of centerline, 50' AGL/109' MSL. Vehicle on road 481' from DER, 28' right of centerline, 15' AGL/74' MSL.

## CLARKSDALE, MS

### FLETCHER FIELD (CKM)

TAKEOFF MINIMUMS AND (OBSTACLE)  
DEPARTURE PROCEDURES  
ORIG 08269 (FAA)

TAKEOFF OBSTACLE NOTES: **Rwy 18**, building 476' from DER, 495' right of centerline 168' AGL/215' MSL. Vehicle 995' from DER, 502' left of centerline, 165' AGL/190' MSL. Trees beginning 5619' from DER, 630' left of centerline, 158' AGL/273' MSL. **Rwy 36**, trees beginning 2258' from DER, 220' left of centerline, 100' AGL/274' MSL.

## CLEVELAND, MS

### CLEVELAND MUNI (RVN)

TAKEOFF MINIMUMS AND (OBSTACLE)  
DEPARTURE PROCEDURES  
AMDT 2 14093 (FAA)

DEPARTURE PROCEDURE: **Rwy 18**, climb heading 178° to 600 before turning eastbound.

TAKEOFF OBSTACLE NOTES: **Rwy 18**, trees and poles beginning 797' from DER, 29' left and right of centerline, up to 40' AGL/180' MSL. **Rwy 36**, poles beginning 1318' from DER, 66' left of centerline, up to 37' AGL/177' MSL. Tree 1418' from DER, 274' left of centerline, 39' AGL/179' MSL.

## COLUMBIA, MS

### COLUMBIA-MARION COUNTY (0R0)

TAKEOFF MINIMUMS AND (OBSTACLE)  
DEPARTURE PROCEDURES  
ORIG 07354 (FAA)

TAKEOFF MINIMUMS: **Rwys 13, 31**, NA-obstacles. DEPARTURE PROCEDURE: **Rwy 23**, climb heading 234° to 800 before turning left.

TAKEOFF OBSTACLE NOTES: **Rwy 5**, trees beginning 175' from DER, 414' right of centerline, up to 100' AGL/379' MSL. **Rwy 23**, vehicle on road beginning 133' from DER, 46' right of centerline, 17' AGL/266' MSL. Tree and house beginning 227' from DER, 240' right of centerline, up to 100' AGL/349' MSL. Trees beginning 357' from DER, 273' left of centerline, up to 100' AGL/349' MSL.

## COLUMBUS, MS

### COLUMBUS-LOWNDES COUNTY (UBS)

TAKEOFF MINIMUMS AND (OBSTACLE)  
DEPARTURE PROCEDURES  
ORIG-A 11097 (FAA)

TAKEOFF MINIMUMS: **Rwy 18**, 300-1 or std. w/ min. climb of 350' per NM to 500. **Rwy 36**, 500-3 or std. w/ min. climb of 280' per NM to 900.

DEPARTURE PROCEDURE: **Rwys 18, 36**, climb runway heading to 600 before turning.

TAKEOFF OBSTACLE NOTES: **Rwy 36**, tower 2.5 NM from DER, 3441' left of centerline, 492' AGL/657' MSL.

## COLUMBUS AFB (KCBM),

### COLUMBUS, MS

TAKEOFF MINIMUMS AND (OBSTACLE)  
DEPARTURE PROCEDURES  
ORIG 14093

TAKEOFF MINIMUMS: **Rwy 13C**, Standard.

**Rwy 31C**, Standard with minimum climb of 240 ft/NM to 600 ft or 200-1¾ or with standard takeoff minimums and a standard 200 ft/NM climb gradient, takeoff must occur no later than 2100 ft prior to departure end of runway. **Rwy 13L**, Standard. **Rwy 31L**, Standard with minimum climb of 210 ft/NM to 600 ft or 200-1¾ or with standard takeoff minimums and a standard 200 ft/NM climb gradient, takeoff must occur no later than 1300 ft prior to departure end of runway. **Rwy 13R**, Standard. **Rwy 31R**, Standard with minimum climb of 240 ft/NM to 600 ft or 200-1¾ or with standard takeoff minimums and a standard 200 ft/NM climb gradient, takeoff must occur no later than 2100 ft prior to departure end of runway.

TAKEOFF OBSTACLE NOTES: **Rwy 13C**, Trees 288' MSL/74' AGL 2967' from DER 1010' left of centerline. Trees 288' MSL/74' AGL 3005' from DER, 223' right of centerline. **Rwy 13R**, Ramp lights 272' MSL/69' AGL 2795' from DER, 766' right of centerline. **Rwy 31C**, Trees 251' MSL/74' AGL 2340' from DER, 942' right of centerline. Trees 251' MSL/74' AGL 2250' from DER, 770' right of centerline. Pylon 348' MSL/157' AGL 1.2 NM from DER, 1104' right of centerline. Pylon 334' MSL/157' AGL 1.0 NM from DER, 2550' right of centerline. **Rwy 31L**, Taxiing aircraft 205' MSL/14' AGL 556' from DER, 281' right of centerline. Taxiing aircraft 204' MSL/14' AGL 554' from DER, 156' left of centerline. Pylon 348' MSL/157' AGL 1.3 NM from DER, 2617' right of centerline. **Rwy 31R**, Taxiing aircraft 197' MSL/14' AGL 80' from DER 472' left of centerline. Trees 251' MSL/74' AGL 2122' from DER, 1104' right of centerline. Pylon 341' MSL/ 157' AGL 1.2 NM from DER, 1560' right of centerline. Pylon 341' MSL/157' AGL 1.1 NM from DER, 2197' right of centerline.

## CORINTH, MS

### ROSCOE TURNER (CRX)

TAKEOFF MINIMUMS AND (OBSTACLE)  
DEPARTURE PROCEDURES  
ORIG 08045 (FAA)

TAKEOFF OBSTACLE NOTES: **Rwy 18**, Vehicle on road 207' from DER, 481' right of centerline, 15' AGL/446' MSL. Trees 305' from DER, 451' left of centerline, up to 71' AGL/500' MSL. Trees 633' from DER, 505' right of centerline, up to 79' AGL/520' MSL. **Rwy 36**, Trees 1099' from DER, 766' right of centerline, up to 86' AGL/480' MSL. Trees 1645' from DER, 751' left of centerline, up to 86' AGL/480' MSL.

# TAKEOFF MINIMUMS, (OBSTACLE) DEPARTURE PROCEDURES, AND DIVERSE VECTOR AREA (RADAR VECTORS)

18340

SC-4

# TAKEOFF MINIMUMS, (OBSTACLE) DEPARTURE PROCEDURES, AND DIVERSE VECTOR AREA (RADAR VECTORS)

18340

## DE QUINCY, LA

DE QUINCY INDUSTRIAL AIRPARK (5R8)

TAKEOFF MINIMUMS AND (OBSTACLE)

DEPARTURE PROCEDURES

AMDT 1 15064 (FAA)

TAKEOFF MINIMUMS: **Rwy 34**, 400-2 or std. w/min. climb of 280' per NM to 600.

TAKEOFF OBSTACLE NOTES: **Rwy 16**, trees beginning 26' from DER, 362' right of centerline, up to 20' AGL/98' MSL. Trees beginning 1016' from DER, 679' right of centerline up to 70' AGL/145' MSL. Trees beginning 1833' from DER, 574' right of centerline, up to 81' AGL/150' MSL. Trees 2251' from DER, 206' right of centerline, up to 75' AGL/138' MSL. Trees beginning 2277' from DER, 280' left of centerline, up to 82' AGL/145' MSL. Trees 992' from DER, 590' left of centerline, up to 85' AGL/164' MSL. Pole 815' from DER 708' left of centerline 37' AGL/115' MSL. Trees 486' from DER, 538' left of centerline, up to 55' AGL/128' MSL. **Rwy 34**, sign 15' from DER, 214' left of centerline, 8' AGL/81' MSL. NAVAIDs beginning 29' from DER, 110' left of centerline up to 5' AGL/75' MSL. Trees beginning 81' from DER, 341' right of centerline, up to 8' AGL/81' MSL. Pole 138' from DER, 483' right of centerline, 41' AGL/109' MSL. Trees beginning 256' from DER, 521' left of centerline up to 75' AGL/157' MSL. Telephone line 1377' from DER, 293' left of centerline, 40' AGL/119' MSL. Telephone line 1376' from DER, 294' right of centerline, 39' AGL/117' MSL. Trees beginning 1431' from DER, 491' right of centerline, up to 74' AGL/136' MSL.

## DE RIDDER, LA

BEAUREGARD RGNL (DRI)

TAKEOFF MINIMUMS AND (OBSTACLE)

DEPARTURE PROCEDURES

AMDT 5 18312 (FAA)

TAKEOFF MINIMUMS: **Rwy 32**, 300-2/4 or std. w/min. climb of 215' per NM to 600.

TAKEOFF OBSTACLE NOTES: **Rwy 14**, vehicle on road 707' from DER, 613' left of centerline, 15' AGL/224' MSL. Trees beginning 1307' from DER, 566' right of centerline, up to 100' AGL/299' MSL. Trees beginning 1765' from DER, 40' right of centerline, up to 100' AGL/309' MSL. **Rwy 18**, trees beginning 52' from DER, 222' left of centerline, up to 220' MSL. Tree 151' from DER, 271' right of centerline, 100' AGL/208' MSL. Trees beginning 580' from DER, 353' right of centerline, up to 263' MSL. **Rwy 32**, vegetation 129' from DER, 162' left of centerline, 203' MSL. Vegetation 164' from DER, 227' left of centerline, 205' MSL. Tree, vegetation beginning 251' from DER, 16' left of centerline, up to 248' MSL. Tree 298' from DER, 189' right of centerline, 216' MSL. Trees beginning 610' from DER, 141' left of centerline, up to 100' AGL/299' MSL. Trees beginning 722' from DER, 203' right of centerline, up to 100' AGL/309' MSL. Tower 1.7 NM from DER, 1400' right of centerline, 275' AGL/479' MSL. **Rwy 36**, trees beginning 556' from DER, 351' right of centerline, up to 266' MSL. Pole 563' from DER, 352' left of centerline, 36' AGL/238' MSL. Trees beginning 634' from DER, 369' left of centerline, up to 285' MSL. Trees beginning 650' from DER, 1' left of centerline, up to 295' MSL. Tree 659' from DER, 558' right of centerline, 270' MSL. Trees beginning 710' from DER, 465' right of centerline, up to 273' MSL. Trees beginning 2033' from DER, 140' right of centerline, up to 284' MSL. Tree 2234' from DER, 372' right of centerline, 290' MSL. Tree 2304' from DER, 313' right of centerline, 291' MSL.

## DE RIDDER, LA (CON'T)

BEAUREGARD RGNL (DRI) (CON'T)

**Rwy 36 (CON'T)**, trees beginning 2372' from DER, 73' right of centerline, up to 299' MSL. Trees beginning 2613' from DER, 219' left of centerline, up to 298' MSL. Trees beginning 2784' from DER, 184' left of centerline, up to 299' MSL. Tree 3607' from DER, 540' left of centerline, 305' MSL. Tree 4277' from DER, 473' left of centerline, 313' MSL.

## DREW, MS

RULEVILLE-DREW (M37)

TAKEOFF MINIMUMS AND (OBSTACLE)

DEPARTURE PROCEDURES

ORIG 10070 (FAA)

TAKEOFF OBSTACLE NOTES: **Rwy 18**, trees beginning 215' from DER, 521' left of centerline, up to 100' AGL/229' MSL. **Rwy 36**, trees beginning 3438' from DER, 225' left of centerline, up to 100' AGL/234' MSL.

## EUNICE, LA

EUNICE (4R7)

TAKEOFF MINIMUMS AND (OBSTACLE)

DEPARTURE PROCEDURES

AMDT 2 03303 (FAA)

TAKEOFF MINIMUMS: **Rwy 16**, 1100-2/2, climb in visual conditions to cross Eunice Airport at or above 1000 MSL before proceeding on course or std. with a min. climb of 280' per NM to 2400. **Rwy 34**, 1100-2/2, climb in visual conditions to cross Eunice Airport at or above 1000 MSL before proceeding on course or std. with a min. climb of 220' per NM to 2400.

CAUTION: Unmarked balloon and cable to 15000 in R-3807. **Rwy 16**, 133°/56.1 NM. **Rwy 34**, 132°/55.4 NM.

## GALLIANO, LA

SOUTH LAFOURCHE LEONARD MILLER

JR (GAO)

TAKEOFF MINIMUMS AND (OBSTACLE)

DEPARTURE PROCEDURES

ORIG 08269 (FAA)

TAKEOFF OBSTACLE NOTES: **Rwy 18**, multiple trees beginning 1258' from DER, 661' left of centerline, up to 45' AGL/56' MSL. Multiple trees beginning 127' from DER, 275' right of centerline, up to 45' AGL/53' MSL. **Rwy 36**, tree 14' from DER, 454' right of centerline, up to 35' AGL/45' MSL. Multiple trees beginning 1391' from DER, 449' right of centerline, up to 55' AGL/86' MSL. Multiple trees beginning 2288' from DER, 291' left of centerline, up to 55' AGL/97' MSL.

06 DEC 2018 to 03 JAN 2019

06 DEC 2018 to 03 JAN 2019

# TAKEOFF MINIMUMS, (OBSTACLE) DEPARTURE PROCEDURES, AND DIVERSE VECTOR AREA (RADAR VECTORS)

18340

SC-4

**TAKEOFF MINIMUMS, (OBSTACLE) DEPARTURE PROCEDURES, AND  
DIVERSE VECTOR AREA (RADAR VECTORS)**

18340

**GONZALES, LA**

LOUISIANA RGNL (REG)  
TAKEOFF MINIMUMS AND (OBSTACLE)  
DEPARTURE PROCEDURES  
AMDT 2 17061 (FAA)

TAKEOFF OBSTACLE NOTES: **Rwy 17**, vehicle 25' from DER, 103' left of centerline, 7' AGL/18' MSL. Vehicle 42' from DER, 119' left of centerline, 9' AGL/20' MSL. Tree 115' from DER, 380' left of centerline, 45' MSL. Tree 131' from DER, 379' right of centerline, 49' MSL. Tree 360' from DER, 515' right of centerline, 61' MSL. Tree 380' from DER, 477' left of centerline, 76' MSL. Trees beginning 836' from DER, 270' right of centerline, up to 115' MSL. **Rwy 35**, Rwy lt 5' from DER, 22' right of centerline, 1' AGL/13' MSL. Rwy lt 6' from DER, 27' left of centerline, 1' AGL/14' MSL. Tree 190' from DER, 379' left of centerline, 26' MSL. Tree 197' from DER, 378' right of centerline, 38' MSL. Trees beginning 679' from DER, 463' left of centerline, up to 76' MSL. Trees beginning 691' from DER, 402' right of centerline, up to 77' MSL. Trees beginning 779' from DER, 395' right of centerline, up to 80' MSL. Trees beginning 863' from DER, 392' right of centerline, up to 81' MSL. Trees beginning 869' from DER, 436' left of centerline, up to 113' MSL. Tree 1008' from DER, 393' right of centerline, 84' MSL. Trees beginning 1031' from DER, 30' right of centerline, up to 110' MSL. Trees beginning 1720' from DER, 31' left of centerline, up to 116' MSL. Tree 2808' from DER, 71' right of centerline, 111' MSL. Trees beginning 2866' from DER, 4' right of centerline, up to 114' MSL. Trees beginning 3654' from DER, 26' left of centerline, up to 120' MSL. Tree 3816' from DER, 420' left of centerline, 125' MSL.

**GREENVILLE, MS**

GREENVILLE MID-DELTA (GLH)  
TAKEOFF MINIMUMS AND (OBSTACLE)  
DEPARTURE PROCEDURES  
ORIG-A 13346 (FAA)

DEPARTURE PROCEDURE: **Rwys 18L, 18R**, climb heading 177° to 800 before turning.  
TAKEOFF OBSTACLE NOTES: **Rwy 18L**, tree 3995' from DER, 1065' left of centerline, 114' AGL/236' MSL. Tree 3503' from DER, 858' right of centerline, 110' AGL/219' MSL. **Rwy 18R**, tree 1207' from DER, 539' right of centerline, 91' AGL/206' MSL. Tree 3872' from DER, 501' right of centerline, 128' AGL/237' MSL. Tree 3503' from DER, 705' left of centerline, 110' AGL/219' MSL.

**GREENWOOD, MS**

GREENWOOD-LEFLORE (GWO)  
TAKEOFF MINIMUMS AND (OBSTACLE)  
DEPARTURE PROCEDURES  
AMDT 7 13066 (FAA)

TAKEOFF MINIMUMS: **Rwy 5**, std. w/min. climb of 255' per NM to 1000, or 1000-2½ for climb in visual conditions.  
DEPARTURE PROCEDURE: **Rwy 5**, for climb in visual conditions, cross Greenwood-Leflore airport at or above 1000 before proceeding on course. When executing VCOA, notify ATC prior to departure.  
TAKEOFF OBSTACLE NOTES: **Rwy 5**, trees beginning 95' from DER, 6' left of centerline, up to 49' AGL/240' MSL. Trees beginning 765' from DER, 42' right of centerline, up to 84' AGL/180' MSL. Trees beginning 2812' from DER, left and right of centerline, up to 99' AGL/259' MSL. Trees beginning 1.2 NM from DER, 1608' right of centerline, up to 123' AGL/392' MSL. **Rwy 23**, bushes beginning 137' from DER, 219' left of centerline, up to 24' AGL/160' MSL. Bushes and trees beginning 233' from DER, 20' right of centerline, up to 82' AGL/251' MSL. Trees beginning 1031' from DER, 14' left of centerline, up to 112' AGL/252' MSL. **Rwy 36**, sign 25' from DER, 242' right of centerline, 3' AGL/148' MSL. Trees beginning 743' from DER, 91' left of centerline, up to 95' AGL/257' MSL. Trees beginning 1037' from DER, 662' right of centerline, up to 45' AGL/242' MSL.

**GRENADA, MS**

GRENADA MUNI (GNF)  
TAKEOFF MINIMUMS AND (OBSTACLE)  
DEPARTURE PROCEDURES  
AMDT 2 13122 (FAA)

TAKEOFF MINIMUMS: **Rwy 31**, 300-1 or std. w/ min. climb of 240' per NM to 500, or alternatively with standard takeoff minimums and a normal 200' per NM climb gradient, takeoff must occur no later than 1800' prior to DER.  
DEPARTURE PROCEDURE: **Rwy 4**, climb heading 051° to 700 before turning left. **Rwy 22**, climb heading 231° to 700 before turning left.  
TAKEOFF OBSTACLE NOTES: **Rwy 4**, trees beginning 320' from DER, 10' left of centerline, up to 100' AGL/299' MSL. Trees beginning 630' from DER, 650' left of centerline, up to 100' AGL/300' MSL. Road and vehicles beginning 45' from DER, from 292' left of centerline to 320' right of centerline, up to 15' AGL/215' MSL. **Rwy 13**, trees beginning 28' from DER, 60' right of centerline, up to 100' AGL/296' MSL. Trees beginning 1110' from DER, 11' left of centerline, up to 100' AGL/293' MSL. **Rwy 22**, trees beginning 940' from DER, 617' right of centerline, up to 100' AGL/290' MSL. Pole and trees 874' from DER, 382' left of centerline, 100' AGL/290' MSL. **Rwy 31**, vehicle on road 2' from DER, 188' right of centerline, 15' AGL/222' MSL. Pole 4749' from DER, 1284' left of centerline, 110' AGL/330' MSL. Trees beginning 192' from DER, 482' right of centerline, up to 100' AGL/359' MSL. Trees beginning 2442' from DER, 575' left of centerline, up to 100' AGL/361' MSL.

06 DEC 2018 to 03 JAN 2019

06 DEC 2018 to 03 JAN 2019

**TAKEOFF MINIMUMS, (OBSTACLE) DEPARTURE PROCEDURES, AND  
DIVERSE VECTOR AREA (RADAR VECTORS)**

18340

SC-4



**TAKEOFF MINIMUMS, (OBSTACLE) DEPARTURE PROCEDURES, AND  
DIVERSE VECTOR AREA (RADAR VECTORS)**

18340

**GULFPORT, MS****GULFPORT-BILOXI INTL (GPT)**

TAKEOFF MINIMUMS AND (OBSTACLE)

DEPARTURE PROCEDURES

AMDT 6 09183 (FAA)

TAKEOFF MINIMUMS: **Rwy 36**, 300-1¼ or std. with a min. climb of 292' per NM to 300.DEPARTURE PROCEDURE: **Rwy 36**, climb heading 013° to 700 before proceeding on course.TAKEOFF OBSTACLE NOTES: **Rwy 14**, tree 1931' from DER, 627' left of centerline, 71' AGL/90' MSL. Pole 3354' from DER, 1068' right of centerline, 85' AGL/115' MSL.**Rwy 18**, trees beginning 924' from DER, 354' right of centerline, up to 84' AGL/98' MSL. Trees beginning 1383' from DER, 165' left of centerline, up to 52' AGL/71' MSL.Antenna 5411' from DER, 1579' left of centerline, 165' AGL/172' MSL. **Rwy 32**, trees beginning 1586' from DER, left and right of centerline, up to 79' AGL/93' MSL.**Rwy 36**, trees beginning 1391' from DER, 327' right of centerline, up to 82' AGL/96' MSL. Trees beginning 1593' from DER, 348' left of centerline, up to 82' AGL/96' MSL.

Crane 4592' from DER, 2673' right of centerline, 142' AGL/151' MSL.

**HATTIESBURG/LAUREL, MS****HATTIESBURG-LAUREL RGNL (PIB)**

TAKEOFF MINIMUMS AND (OBSTACLE)

DEPARTURE PROCEDURES

AMDT 4 18340 (FAA)

DEPARTURE PROCEDURE: **Rwys 18, 36**, climb runway heading to 1000 before turning east.TAKEOFF OBSTACLE NOTES: **Rwy 18**, tree 50' from DER, 275' right of centerline, 304' MSL. Tree 194' from DER, 325' right of centerline, 318' MSL. Trees beginning 346' from DER, 467' left of centerline, up to 329' MSL. Tree 531' from DER, 466' left of centerline, 331' MSL. Tree 1019' from DER, 579' right of centerline, 331' MSL. Trees beginning 1051' from DER, 264' right of centerline, up to 340' MSL. Tree 1134' from DER, 465' left of centerline, 332' MSL. Trees beginning 1172' from DER, 371' right of centerline, up to 343' MSL. Tree 1438' from DER, 536' left of centerline, 342' MSL. **Rwy 36**, tree 515' from DER, 551' right of centerline, 326' MSL. Trees beginning 760' from DER, 639' right of centerline, up to 329' MSL. Tree 1579' from DER, 660' left of centerline, 345' MSL. Tree 1840' from DER, 923' left of centerline, 369' MSL.**HAMMOND, LA****HAMMOND NORTHSORE RGNL (HDC)**

TAKEOFF MINIMUMS AND (OBSTACLE)

DEPARTURE PROCEDURES

AMDT 1 10098 (FAA)

DEPARTURE PROCEDURE: **Rwy 31**, climb heading 312° to 700 before turning left.TAKEOFF OBSTACLE NOTES: **Rwy 13**, trees beginning 1260' from DER, 125' left of centerline, up to 119' AGL/163' MSL. Trees beginning 1314' from DER, 186' right of centerline, up to 124' AGL/168' MSL. **Rwy 18**,antenna on building 844' from DER, 239' right of centerline, 22' AGL/66' MSL. Obstruction light on pole 1020' from DER, 141' right of centerline, 23' AGL/67' MSL. Trees beginning 1556' from DER, 430' left of centerline, up to 92' AGL/136' MSL. Trees beginning 1747' from DER, 64' right of centerline, up to 110' AGL/149' MSL. **Rwy 31**, trees beginning 216' from DER, 13' left of centerline, up to 109' AGL/158' MSL. Trees beginning 566' from DER, 386' right of centerline, up to 100' AGL/154' MSL.**Rwy 36**, tree 3072' from DER, 879' left of centerline, 73' AGL/127' MSL. Tree 3585' from DER, 1407' right of centerline, 102' AGL/151' MSL.**HOLLY SPRINGS, MS****HOLLY SPRINGS-MARSHALL COUNTY**

(M41)

TAKEOFF MINIMUMS AND (OBSTACLE)

DEPARTURE PROCEDURES

AMDT 1A 14065 (FAA)

TAKEOFF OBSTACLE NOTES: **Rwy 18**, trees and vertical structure beginning 1' from DER, 249' right of centerline, up to 76' AGL/627' MSL. Trees beginning 182' from DER, 390' left of centerline, up to 85' AGL/636' MSL. Trees and vertical structure beginning 637' from DER, 20' right of centerline, up to 91' AGL/642' MSL. Trees beginning 701' from DER, 63' left of centerline, up to 96' AGL/647' MSL. **Rwy 36**, trees beginning 22' from DER, 283' left of centerline, up to 66' AGL/582' MSL. Pole and trees beginning 501' from DER, 376' right of centerline, up to 56' AGL/572' MSL.**HOUMA, LA****HOUMA-TERREBONNE (HUM)**

TAKEOFF MINIMUMS AND (OBSTACLE)

DEPARTURE PROCEDURES

AMDT 5 09183 (FAA)

DEPARTURE PROCEDURE: **Rwy 30**, climb heading 304° to 600 before proceeding on course.TAKEOFF OBSTACLE NOTES: **Rwy 12**, trees and equipment building beginning 86' from DER, 254' left of centerline, up to 40' AGL/44' MSL. Ground and tree beginning 220' from DER, 202' right of centerline, up to 29' AGL/33' MSL. **Rwy 18**, trees and poles beginning 923' from DER, 238' left of centerline, up to 100' AGL/109' MSL. Trees beginning 249' from DER, 345' right of centerline, up to 60' AGL/64' MSL. **Rwy 30**,

trees beginning 802' from DER, 93' left of centerline, up to 60' AGL/64' MSL. Poles and road beginning 527' from DER, 427' right of centerline, up to 38' AGL/42' MSL.

**Rwy 36**, antenna 1589' from DER, 882' left of centerline, 63' AGL/72' MSL. Trees beginning 2894' from DER, 971' right of centerline, up to 100' AGL/109' MSL.**HATTIESBURG, MS****HATTIESBURG BOBBY L. CHAIN MUNI**

(HBG)

TAKEOFF MINIMUMS AND (OBSTACLE)

DEPARTURE PROCEDURES

AMDT 1 09015 (FAA)

DEPARTURE PROCEDURE: **Rwy 31**, climb heading 309° to 900 before turning west.TAKEOFF OBSTACLE NOTES: **Rwy 13**, numerous trees beginning 1184' from DER, 26' left of centerline, up to 111' AGL/251' MSL. Multiple trees beginning 2023' from DER, 49' right of centerline, up to 89' AGL/229'. **Rwy 31**,

numerous trees beginning 189' from DER, 111' left of centerline, up to 103' AGL/253' MSL. Multiple trees beginning 894' from DER, 69' right of centerline, up to 84' AGL/234' MSL.

**TAKEOFF MINIMUMS, (OBSTACLE) DEPARTURE PROCEDURES, AND  
DIVERSE VECTOR AREA (RADAR VECTORS)**

18340

SC-4

**TAKEOFF MINIMUMS, (OBSTACLE) DEPARTURE PROCEDURES, AND  
DIVERSE VECTOR AREA (RADAR VECTORS)**

18340

**INDIANOLA, MS****INDIANOLA MUNI (IDL)**

TAKEOFF MINIMUMS AND (OBSTACLE)  
DEPARTURE PROCEDURES

AMDT 1 10266 (FAA)

DEPARTURE PROCEDURE: **Rwy 18**, climb heading 180° to 1800 before turning East. **Rwy 36**, climb heading 360° to 800 before turning East.

TAKEOFF OBSTACLE NOTES: **Rwy 18**, trees beginning 383' from DER, 75' left of centerline, up to 81' AGL/201' MSL. Trees beginning 385' from DER, 165' right of centerline, up to 90' AGL/210' MSL.

**Rwy 36**, fence 37' from DER, 400' left of centerline, 6' AGL/129' MSL. Trees beginning 898' from DER, 684' right of centerline, up to 100' AGL/224' MSL. Trees beginning 1086' from DER, 576' left of centerline, up to 100' AGL/224' MSL.

**JACKSON, MS****HAWKINS FIELD (HKS)**

TAKEOFF MINIMUMS AND (OBSTACLE)  
DEPARTURE PROCEDURES

AMDT 1 10266 (FAA)

TAKEOFF MINIMUMS: **Rwy 11**, 300-1¼ or std. w/ min. climb of 230' per NM to 600. Alternatively, with standard takeoff minimums and a normal 200' per NM climb gradient, takeoff must occur no later than 1800 prior to DER.

DEPARTURE PROCEDURE: **Rwy 11**, climb heading 115° to 900 before proceeding on course. **Rwy 16**, climb heading 159° to 1400 before turning right. **Rwy 29**, climb heading 295° to 1400 before turning left.

**Rwy 34**, climb heading 339° to 900 before proceeding on course.

TAKEOFF OBSTACLE NOTES: **Rwy 11**, trees beginning 1141' from DER, 33' right of centerline, up to 100' AGL/374' MSL. Trees beginning 460' from DER, 155' left of centerline, up to 100' AGL/406' MSL. Tower 5514' from DER, 1566' left of centerline, 164' AGL/483' MSL. **Rwy 16**, trees beginning 1023' from DER, 373' right of centerline, up to 100' AGL/438' MSL. Trees beginning 588' from DER, 27' left of centerline, up to 100' AGL/449' MSL. **Rwy 29**, hangar, 481' from DER, 357' right of centerline, 13' AGL/332' MSL. Light, 880' from DER, 255' left of centerline, 10' AGL/339' MSL. Antenna on hangar, 1065' from DER, 595' right of centerline, 40' AGL/362' MSL. Trees beginning 698' from DER, 186' left of centerline, up to 100' AGL/426' MSL. **Rwy 34** terrain 50' from DER, 316' right of centerline, 345' MSL. Trees, 2700' from DER, 884' left of centerline, up to 100' AGL/410' MSL.

**JACKSON, MS (CON'T)****JACKSON-MEDGAR WILEY EVERS INTL  
(JAN)**

TAKEOFF MINIMUMS AND (OBSTACLE)  
DEPARTURE PROCEDURES

AMDT 2 13262 (FAA)

TAKEOFF MINIMUMS: **Rwy 16R**, 200-1¼ or std. w/min. climb of 227' per NM to 600.

TAKEOFF OBSTACLE NOTES: **Rwy 16L**, trees beginning 1130' from DER, 722' left of centerline, up to 68' AGL/408' MSL. Trees, beginning 1231' from DER, 321' left of centerline, up to 81' AGL/421' MSL. Trees beginning 2323' from DER, 158' left of centerline, up to 123' AGL/459' MSL. Tree 3159' from DER, 169' right of centerline, 108' AGL/435' MSL. **Rwy 16R**, trees beginning 1411' from DER, 766' left of centerline, up to 65' AGL/405' MSL. Tree 3824' from DER, 1210' left of centerline, 86' AGL/426' MSL. Trees 5211' from DER, 1882' left of centerline, up to 85' AGL/482' MSL. Trees beginning 2648' from DER, 537' right of centerline, up to 95' AGL/425' MSL. **Rwy 34L**, trees beginning 2165' from DER, left and right of centerline, up to 120' AGL/402' MSL. **Rwy 34R**, trees beginning 3117' from DER, 953' left of centerline, up to 108' AGL/396' MSL. Trees beginning 2273' from DER, 1002' right of centerline, up to 93' AGL/374' MSL.

**JENNINGS, LA****JENNINGS (3R7)**

TAKEOFF MINIMUMS AND (OBSTACLE)  
DEPARTURE PROCEDURES

AMDT 2A 10098 (FAA)

TAKEOFF MINIMUMS: **Rwy 13**, 300-1 or std. with a min climb of 393' per NM to 300. **Rwys 17,35**, NA.

TAKEOFF OBSTACLE NOTES: **Rwy 8**, multiple poles 1080' from DER, 260' left of centerline, 40' AGL/62' MSL. **Rwy 13**, trees beginning 690' from DER, 262' left of centerline, up to 116' AGL/141' MSL. Tank 3428' from DER, 1072' left of centerline, 156' AGL/181' MSL. Water tower, 3492' from DER, 1089' left of centerline, 172' AGL/197' MSL. Transmission line and trees beginning 766' from DER, 622' right of centerline, up to 96' AGL/119' MSL. **Rwy 26**, trees 1080' from DER, 45' AGL/55' MSL. **Rwy 31**, fence 140' from DER, 15' AGL/32' MSL.

**JONESBORO, LA****JONESBORO (F88)**

TAKEOFF MINIMUMS AND (OBSTACLE)  
DEPARTURE PROCEDURES

ORIG 12152 (FAA)

TAKEOFF OBSTACLE NOTES: **Rwy 18**, trees beginning 211' from DER, 352' right of centerline, up to 100' AGL/349' MSL. Trees beginning 270' from DER, 462' left of centerline, up to 100' AGL/369' MSL. **Rwy 36**, trees beginning 200' from DER, 386' left of centerline, up to 100' AGL/339' MSL. Trees beginning 375' from DER, 502' right of centerline, up to 100' AGL/339' MSL.

06 DEC 2018 to 03 JAN 2019

06 DEC 2018 to 03 JAN 2019

**TAKEOFF MINIMUMS, (OBSTACLE) DEPARTURE PROCEDURES, AND  
DIVERSE VECTOR AREA (RADAR VECTORS)**

18340

SC-4

# TAKEOFF MINIMUMS, (OBSTACLE) DEPARTURE PROCEDURES, AND DIVERSE VECTOR AREA (RADAR VECTORS)

18340

## KEESLER AFB (KBIX)

BILOXI, MS

TAKEOFF MINIMUMS AND (OBSTACLE)  
DEPARTURE PROCEDURES  
13206

TAKEOFF OBSTACLE NOTES: **Rwy 3:** Light pole 977' from DER, 764' right of centerline, 63' AGL/71' MSL. Trees 1625' from DER, 727' right of centerline, 51' AGL/62' MSL. Trees 1977' from DER, 728' right of centerline, 65' MSL/76' MSL. **Rwy 21:** Trees 1903' from DER, 669' right of centerline, 71' AGL/ 101' MSL. Trees 2704' from DER, 730' right of centerline, 70' AGL/96' MSL. Pylon-street light 1193' from DER, 444' right of centerline, 30' AGL/61' MSL. Trees 1803' from DER, 658' left of centerline, 43' AGL/69' MSL. Tower 2631' from DER, 1034' left of centerline, 58' AGL/82' MSL. Multiple power poles 2670' from DER, 893' left of centerline, 71' AGL/91' MSL.

## KOSCIUSKO, MS

KOSCIUSKO-ATTALA COUNTY (OSX)

TAKEOFF MINIMUMS AND (OBSTACLE)  
DEPARTURE PROCEDURES  
ORIG 05132 (FAA)

TAKEOFF OBSTACLE NOTES: **Rwy 14,** trees 1054' from DER, 503' left of centerline, 100' AGL/559' MSL. Trees 1172' from DER, 555' right of centerline, 100' AGL/559' MSL. Terrain 18' from DER, 91' right of centerline, 473' MSL. Terrain 68' from DER, 485' right of centerline, 473' MSL. **Rwy 32,** trees 1676' from DER, 288' right of centerline, 100' AGL/619' MSL. Trees 1341' from DER, 231' left of centerline, 100' AGL/609' MSL. Terrain 129' from DER, 139' right of centerline, 502' MSL. Terrain 182' from DER, 532' right of centerline, 493' MSL. Terrain 352' from DER, 344' right of centerline, 496' MSL. Terrain 79' from DER, 254' left of centerline, 486' MSL. Terrain 525' from DER, 156' right of centerline, 496' MSL. Terrain 302' from DER, 49' left of centerline, 489' MSL.

## LAFAYETTE, LA

LAFAYETTE RGNL/PAUL FOURNET FIELD (LFT)

TAKEOFF MINIMUMS AND (OBSTACLE)  
DEPARTURE PROCEDURES  
AMDT 2A 15204 (FAA)

TAKEOFF OBSTACLE NOTES: **Rwy 4L,** trees beginning 257' from DER, 268' left of centerline, up to 100' AGL/139' MSL. Fence 2506' from DER, 682' left of centerline, 121' AGL/163' MSL. Pole 2978' from DER, 1061' left of centerline, 121' AGL/163' MSL. Obstruction lights beginning 155' from DER, 251' right of centerline, up to 54' AGL/83' MSL. **Rwy 4R,** vehicle on road 76' from DER, 498' left of centerline, 15' AGL/44' MSL. Trees beginning 815' from DER, 110' left of centerline, up to 75' AGL/94' MSL. Light on pole 912' from DER, 738' left of centerline, 32' AGL/71' MSL. Vehicle on road 25' from DER, 272' right of centerline, 15' AGL/44' MSL. Trees beginning 31' from DER, 268' right of centerline, up to 100' AGL/103' MSL. **Rwy 11,** vehicle on road 37' from DER, 302' left of centerline, 15' AGL/48' MSL. Trees beginning 553' from DER, 128' left of centerline, up to 87' AGL/91' MSL. Vehicle on road 20' from DER, 34' right of centerline, 15' AGL/49' MSL. Trees beginning 522' from DER, 27' right of centerline, up to 83' AGL/87' MSL. **Rwy 22L,** poles beginning 1282' from DER, 62' left of centerline, up to 52' AGL/91' MSL.

## LAFAYETTE, LA (CON'T)

LAFAYETTE RGNL/PAUL FOURNET FIELD (LFT) (CON'T)

**Rwy 22L (CON'T),** trees beginning 1454' from DER, 97' left of centerline, up to 100' AGL/106' MSL. Terrain and trees beginning 95' from DER, 22' right of centerline, up to 100' AGL/129' MSL. Railroad 875' from DER, 629' right of centerline, 23' AGL/63' MSL. poles beginning 899' from DER, 248' right of centerline, up to 50' AGL/89' MSL. **Rwy 22R,** tower 2544' from DER, 25' left of centerline, 104' AGL/142' MSL. Trees, buildings, obstruction lights and antenna beginning 152' from DER, 268' right of centerline, up to 104' AGL/142' MSL. **Rwy 29R,** trees, towers, poles beginning 925' from DER, 5' left of centerline, up to 110' AGL/150' MSL. Vehicle on road 12' from DER, 403' right of centerline, 15' AGL/48' MSL. Trees, towers and poles beginning 63' from DER, 68' right of centerline, up to 130' AGL/165' MSL.

## LAKE CHARLES, LA

CHENNAULT INTL (CWF)

TAKEOFF MINIMUMS AND (OBSTACLE)  
DEPARTURE PROCEDURES  
ORIG 10154 (FAA)

TAKEOFF MINIMUMS: **Rwy 33,** 300-1/4 or std. w/ min. climb of 205' per NM to 300. Alternatively, with standard TAKEOFF minimums and a normal 200'/NM climb gradient, TAKEOFF must occur no later than 1200' prior to DER.

TAKEOFF OBSTACLE NOTES: **Rwy 15,** trees beginning 1114' from DER, 670' left of centerline, up to 51' AGL/70' MSL. Trees beginning 1261' from DER, 380' right of centerline, up to 62' AGL/81' MSL. **Rwy 33,** tanks 5977' from DER, 1577' right of centerline, 156' AGL/170' MSL. Trees beginning 1763' from DER, 685' left of centerline, up to 71' AGL/85' MSL. Trees beginning 1202' from DER, 399' right of centerline, up to 52' AGL/71' MSL.

## LAKE CHARLES RGNL (LCH)

TAKEOFF MINIMUMS AND (OBSTACLE)  
DEPARTURE PROCEDURES  
ORIG 11125 (FAA)

TAKEOFF OBSTACLE NOTES: **Rwy 5,** antenna 38' from DER, 396' right of centerline, 8' AGL/23' MSL. Vehicle on road 457' from DER, 605' left of centerline, up to 15' AGL/34' MSL. Wire on pole 647' from DER, 530' left of centerline, 30' AGL/50' MSL. Transmission pole 707' from DER, 602' right of centerline, 42' AGL/57' MSL. Vehicle on road 710' from DER, 428' left of centerline, 15' AGL/33' MSL. Transmission pole 767' from DER, 531' left of centerline, 31' AGL/46' MSL. Transmission pole 825' from DER, 454' right of centerline, 32' AGL/47' MSL. Pole 862' from DER, 485' right of centerline, 18' AGL/38' MSL. Wire on pole 863' from DER, 485' right of centerline, 34' AGL/49' MSL. **Rwy 23,** multiple trees beginning 19' from DER, left and right of centerline, up to 73' AGL/87' MSL. Pole 1112' from DER, 130' left of centerline, 14' AGL/50' MSL. Poles beginning 631' from DER, 283' right of centerline, up to 22' AGL/44' MSL. **Rwy 33,** tree 1225' from DER, 622' left of centerline, 34' AGL/44' MSL.

## LAUREL, MS

HESLER-NOBLE FIELD (LUL)

TAKEOFF MINIMUMS AND (OBSTACLE)  
DEPARTURE PROCEDURES  
AMDT 1 82175 (FAA)

DEPARTURE PROCEDURE: **Rwy 13,** climb runway heading to 500 before turning.

# TAKEOFF MINIMUMS, (OBSTACLE) DEPARTURE PROCEDURES, AND DIVERSE VECTOR AREA (RADAR VECTORS)

18340

SC-4

# TAKEOFF MINIMUMS, (OBSTACLE) DEPARTURE PROCEDURES, AND DIVERSE VECTOR AREA (RADAR VECTORS)

18340

## LEESVILLE, LA

LEESVILLE (L39)

TAKEOFF MINIMUMS AND (OBSTACLE)  
DEPARTURE PROCEDURES  
ORIG 11293 (FAA)

TAKEOFF OBSTACLE NOTES: **Rwy 18**, tree 26' from DER, 78' left of centerline, 100' AGL/359' MSL. Trees beginning 12' from DER, 210' right of centerline, up to 100' AGL/389' MSL. **Rwy 36**, trees beginning 262' from DER, 396' left of centerline, 47' AGL/336' MSL. Trees beginning 180' from DER, 130' right of centerline, up to 58' AGL/347' MSL.

## LEXINGTON, MS

C. A. MOORE (19M)

TAKEOFF MINIMUMS AND (OBSTACLE)  
DEPARTURE PROCEDURES  
ORIG 83160 (FAA)

DEPARTURE PROCEDURE: **Rwy 19**, climb runway heading to 1000 before turning.

## LOUISVILLE, MS

LOUISVILLE- WINSTON COUNTY (LMS)

TAKEOFF MINIMUMS AND (OBSTACLE)

DEPARTURE PROCEDURES

AMDT 2A 08325 (FAA)

TAKEOFF MINIMUMS: **Rwy 17**, 500-2¼ or std. with a min. climb of 400' per NM to 1100.

DEPARTURE PROCEDURE: **Rwy 17**, climb heading 170° to 1100 before turning left.

TAKEOFF OBSTACLE NOTES: **Rwy 17**, tower 1.7 NM from DER, 2209 left of centerline, 410' AGL/950' MSL.

## MADISON, MS

BRUCE CAMPBELL FIELD (MBO)

TAKEOFF MINIMUMS AND (OBSTACLE)

DEPARTURE PROCEDURES

AMDT 1 10098 (FAA)

TAKEOFF OBSTACLE NOTES: **Rwy 35**, 300-2 or std. w/ min. climb of 267' per NM to 700, or alternatively, with standard TAKEOFF minimums and a normal 200' per NM climb gradient. TAKEOFF must occur no later than 1400' prior to DER.

TAKEOFF OBSTACLE NOTES: **Rwy 17**, trees 524' from DER, 464' right of centerline, 100' AGL/399' MSL. **Rwy 35**, house 1324' from DER, 619' left of centerline, 20' AGL/349' MSL. Vehicle on road 2178' from DER, 389' left of centerline, up to 17' AGL/350' MSL.

## MAGEE, MS

MAGEE MUNI (17M)

TAKEOFF MINIMUMS AND (OBSTACLE)

DEPARTURE PROCEDURES

ORIG 14149 (FAA)

TAKEOFF OBSTACLE NOTES: **Rwy 18**, trees beginning abeam DER, 201' left of centerline, up to 100' AGL/649' MSL. Trees beginning abeam DER, 205' right of centerline, up to 100' AGL/649' MSL. Trees 562' from DER, 577' right of centerline, up to 100' AGL/ 659' MSL. Trees beginning 1217' from DER, left and right of centerline, up to 100' AGL/659' MSL. **Rwy 36**, trees beginning abeam DER, 165' right of centerline, up to 100' AGL/659' MSL. Vehicle on road 411' from DER, 423' left of centerline, up to 15' AGL/565' MSL. Trees 621' from DER, 343' left of centerline, up to 100' AGL/659' MSL. Trees 1160' from DER, 447' right of centerline, up to 100' AGL/659' MSL.

## MANSFIELD, LA

C E 'RUSTY' WILLIAMS (3F3)

TAKEOFF MINIMUMS AND (OBSTACLE)  
DEPARTURE PROCEDURES  
ORIG 11013 (FAA)

TAKEOFF OBSTACLE NOTES: **Rwy 18**, trees beginning 1182' from DER. Left and right of centerline, up to 100' AGL/459' MSL. **Rwy 36**, trees beginning 116' from DER, left and right of centerline, up to 100' AGL/439' MSL.

## MANY, LA

HART (3R4)

TAKEOFF MINIMUMS AND (OBSTACLE)  
DEPARTURE PROCEDURES  
ORIG-A 08185 (FAA)

TAKEOFF MINIMUMS: **Rwy 12**, 600-3 or std. with a min. climb of 250' per NM to 900.

DEPARTURE PROCEDURE: **Rwy 12**, climb heading 117° to 1100 before proceeding on course.

TAKEOFF OBSTACLE NOTES: **Rwy 12**, trees beginning 1' from DER, 594' left to 598' right of centerline, up to 100' AGL/385' MSL. Power line/poles beginning 1198' from DER, 309' right of centerline, up to 58' AGL/354' MSL. **Rwy 30**, trees beginning 74' from DER, 781' left to 509' right of centerline, up to 100' AGL/391' MSL. Power line/pole 484' from DER, 318' right of centerline, 62' AGL/358' MSL.

## MARKS, MS

SELFS (MMS)

TAKEOFF MINIMUMS AND (OBSTACLE)  
DEPARTURE PROCEDURES

AMDT 1 12264 (FAA)

TAKEOFF OBSTACLE NOTES: **Rwy 2**, vehicles on road beginning 3' from DER, 210' left of centerline, up to 15' AGL/161' MSL. Vehicles on road, building, and poles beginning 51' from DER, 4' right of centerline, up to 38' AGL/195' MSL. Trees beginning 1171' from DER, 32' left of centerline, up to 110' AGL/265' MSL. Trees beginning 1071' from DER, 4' right of centerline, up to 110' AGL/265' MSL. **Rwy 20**, trees beginning 44' from DER, 389' right of centerline, up to 85' AGL/238' MSL. Trees 3684' from DER, 550' right of centerline, up to 106' AGL/263' MSL.

## MARKSVILLE, LA

MARKSVILLE MUNI (MKV)

TAKEOFF MINIMUMS AND (OBSTACLE)  
DEPARTURE PROCEDURES

ORIG 11293 (FAA)

TAKEOFF OBSTACLE NOTES: **Rwy 4**, light pole 61' from DER, 459' right of centerline, 5' AGL/84' MSL. Power pole 287' from DER, 315' right of centerline, 35' AGL/111' MSL. Water tower 3870' from DER, 1134' left of centerline, 148' AGL/217' MSL. Tree 1504' from DER, 374' left of centerline, 88' AGL/164' MSL. Trees beginning 465' from DER, 148' right of centerline, up to 110' AGL/183' MSL. **Rwy 22**, trees beginning 248' from DER, 373' left of centerline, up to 100' AGL/173' MSL. Trees beginning 2571' from DER, 1008' right of centerline, up to 100' AGL/166' MSL.

# TAKEOFF MINIMUMS, (OBSTACLE) DEPARTURE PROCEDURES, AND DIVERSE VECTOR AREA (RADAR VECTORS)

18340

SC-4

**TAKEOFF MINIMUMS, (OBSTACLE) DEPARTURE PROCEDURES, AND  
DIVERSE VECTOR AREA (RADAR VECTORS)**

18340

**MC COMB, MS**

MC COMB/PIKE COUNTY/JOHN E. LEWIS  
FIELD (MCB)

TAKEOFF MINIMUMS AND (OBSTACLE)  
DEPARTURE PROCEDURES

AMDT 1 18144 (FAA)

TAKEOFF OBSTACLE NOTES: **Rwy 16**, tree 516' from DER, 603' left of centerline, 405' MSL. Tree 610' from DER, 653' right of centerline, 430' MSL. Tree 653' from DER, 590' left of centerline, 441' MSL. Trees beginning 819' from DER, 519' right of centerline, up to 438' MSL. Tree 1180' from DER, 770' left of centerline, 462' MSL. Trees beginning 1265' from DER, 561' left of centerline, up to 467' MSL. Trees beginning 1496' from DER, 394' right of centerline, up to 458' MSL. Trees beginning 1575' from DER, 392' left of centerline, up to 470' MSL. Tree 2734' from DER, 565' right of centerline, 459' MSL. Tree 2838' from DER, 421' right of centerline, 460' MSL. Tree 2883' from DER, 921' right of centerline, 465' MSL. Trees beginning 2940' from DER, 500' right of centerline, up to 467' MSL. Trees beginning 3291' from DER, 443' left of centerline, up to 475' MSL. **Rwy 34**, tree 69' from DER, 271' left of centerline, 444' MSL. Trees beginning 164' from DER, 307' left of centerline, up to 454' MSL. Trees beginning 193' from DER, 493' left of centerline, up to 459' MSL. Trees beginning 667' from DER, 568' left of centerline, up to 471' MSL. Tree 717' from DER, 593' right of centerline, 455' MSL. Tree 889' from DER, 630' right of centerline, 465' MSL. Tree, pole beginning 957' from DER, 693' left of centerline, up to 493' MSL. Tree 1128' from DER, 684' right of centerline, 470' MSL. Trees beginning 1258' from DER, 657' right of centerline, up to 478' MSL. Trees beginning 1821' from DER, 643' right of centerline, up to 487' MSL. Trees beginning 2745' from DER, 690' right of centerline, up to 491' MSL. Tree 3017' from DER, 753' right of centerline, 501' MSL. Trees beginning 3021' from DER, 929' right of centerline, up to 507' MSL.

**MERIDIAN, MS**

KEY FIELD (MEI)

TAKEOFF MINIMUMS AND (OBSTACLE)  
DEPARTURE PROCEDURES

AMDT 6 16007 (FAA)

TAKEOFF MINIMUMS: **Rwy 22**, 300-1/2 or std. w/ min. climb of 280' per NM to 700.

DEPARTURE PROCEDURE: **Rwy 4**, climb heading 046° to 1000 before turning right.

TAKEOFF OBSTACLE NOTES: **Rwy 1**, tree 323' from DER, 440' right of centerline, 28' AGL/308' MSL. Vehicles on road 1196' from DER, 421' left of centerline, 17' AGL/341' MSL. Trees beginning 1435' from DER, 413' left of centerline, up to 90' AGL/389' MSL. Trees, tank, and tower beginning 2201' from DER, left and right of centerline, up to 80' AGL/399' MSL. Trees beginning 3688' from DER, 334' left of centerline, up to 104' AGL/403' MSL. **Rwy 4**, poles and trees beginning 70' from DER, 278' right of centerline, up to 39' AGL/335' MSL. Poles, trees, and building beginning 988' from DER, 256' right of centerline, up to 51' AGL/350' MSL. Tree 1817' from DER, 940' right of centerline, 59' AGL/358' MSL. Fence 34' from DER, 276' left of centerline, 8' AGL/305' MSL. Pole, light on pole, tank and railing on tank beginning 863' from DER, up to 32' AGL/330' MSL. Trees beginning 2493' from DER, 65' left of centerline, up to 80' AGL/379' MSL. **Rwy 19**, tower and antenna 481' from DER, 570' left of centerline, 32' AGL/312' MSL. Tree 1893' from DER, 934' right of centerline, 101' AGL/380' MSL. Tree 2660' from DER, 1162' left of centerline, 116' AGL/395' MSL. **Rwy 22**, trees beginning 1328' from DER, 540' right of centerline, up to 99' AGL/378' MSL. Trees beginning 1621' from DER, left and right of centerline, up to 108' AGL/387' MSL. Trees beginning 4365' from DER, 317' right of centerline, up to 62' AGL/441' MSL. Trees beginning 4519' from DER, left and right of centerline, up to 48' AGL/447' MSL. Trees beginning 5568 from DER, 1354' right of centerline, up to 55' AGL/454' MSL. Trees beginning 5650' from DER, 1273' right of centerline, up to 79' AGL/478' MSL. Trees beginning 5702' from DER, left and right of centerline, up to 69' AGL/488' MSL. Trees beginning 1.1 NM from DER, 1236' right of centerline, up to 60' AGL/499' MSL. Trees beginning 1.2 NM from DER, 1490' right of centerline, up to 66' AGL/505' MSL. Trees beginning 1.2 NM from DER, 712' right of centerline, up to 77' AGL/536' MSL.

06 DEC 2018 to 03 JAN 2019

06 DEC 2018 to 03 JAN 2019

**TAKEOFF MINIMUMS, (OBSTACLE) DEPARTURE PROCEDURES, AND  
DIVERSE VECTOR AREA (RADAR VECTORS)**

18340

SC-4

**TAKEOFF MINIMUMS, (OBSTACLE) DEPARTURE PROCEDURES, AND  
DIVERSE VECTOR AREA (RADAR VECTORS)**

18340

**MERIDIAN NAS (MC CAIN FIELD) (KNMM)**

MERIDIAN, MS

TAKEOFF MINIMUMS AND (OBSTACLE)

DEPARTURE PROCEDURES

16147

TAKEOFF MINIMUMS: **Rwy 1R**, 300-1½, or standard with minimum climb of 215 ft/NM to 800. **Rwy 19R**, 200 -2, or standard with minimum climb of 219ft/NM to 800.

TAKEOFF OBSTACLE NOTES: **Rwy 1R**, terrain 2709' from DER, 1138' left of centerline, 0' AGL/399' MSL. Terrain 50' from DER, 500' right of centerline, 330' MSL. Terrain 63' from DER, 517' right of centerline, 330' MSL. Terrain 381' from DER, 600' left of centerline, 337' MSL. Terrain 403' from DER, 608' left of centerline, 338' MSL. Terrain 427' from DER, 614' left of centerline, 339' MSL. Terrain 614' from DER, 617' left of centerline, 344' MSL. Terrain 617' from DER, 665' left of centerline, 345' MSL. Terrain 644' from DER, 600' left of centerline, 344' MSL. Terrain 656' from DER, 676' left of centerline, 346' MSL. Terrain and tree 3148' from DER, 954' left of centerline, 0' AGL/399' MSL. Terrain and tree 1.1 NM from DER, 4388' left of centerline, 0' AGL/499' MSL. **Rwy 19R**, Terrain and tree 4388' from DER, 1107' left of centerline, 70' AGL/ 349' MSL. Terrain and tree 5309' from DER, 1235' left of centerline, 105' AGL/384' MSL. Terrain 63' from DER, 517' right of centerline, 256' MSL. Terrain 50' from DER, 500' right of centerline, 256' MSL. Terrain and tree 1.6 NM from DER, 1203' right of centerline, 100' AGL/471' MSL. Terrain and tree 1.2 NM from DER, 248' right of centerline, 85' AGL/424' MSL. **Rwy 10**, Terrain 63' from DER, 517' right of centerline, 306' MSL. Terrain 50' from DER, 500' right of centerline, 306' MSL. **Rwy 28**, antenna 1661' from DER, 90' left of centerline, 0' AGL/338' MSL.

**MINDEN, LA**

MINDEN (MNE)

TAKEOFF MINIMUMS AND (OBSTACLE)

DEPARTURE PROCEDURES

ORIG 10322 (FAA)

TAKEOFF OBSTACLE NOTES: **Rwy 1**, trees beginning 2' from DER, 134' left of centerline, up to 116' AGL/383' MSL. Trees beginning 791' from DER, 68' right of centerline, up to 104' AGL/383' MSL. **Rwy 19**, trees beginning 232' from DER, 46' left of centerline, up to 103' AGL/352' MSL. Trees beginning 192' from DER, 12' right of centerline, up to 116' AGL/365' MSL. Poles beginning 1234' from DER, 226' right of centerline, up to 69' AGL/318' MSL.

**MONROE, LA**

MONROE RGNL (MLU)

TAKEOFF MINIMUMS AND (OBSTACLE)

DEPARTURE PROCEDURES

AMDT 5 05188 (FAA)

DEPARTURE PROCEDURE: **Rwy 22**, climb via heading 222° to 900 before turning west. **Rwy 32**, climb via heading 317° to 900 before turning west. **Rwy 36**, climb via heading 357° to 900 before turning west.

TAKEOFF OBSTACLE NOTES: **Rwy 4**, tree 3535' from DER, 1136' left of centerline, 98' AGL/177' MSL. Tree 995' from DER, 726' left of centerline, 66' AGL/142' MSL. Tree 2423' from DER, 903' right of centerline, 65' AGL/141' MSL. Tree 1765' from DER, 773' right of centerline, 44' AGL/120' MSL. **Rwy 14**, tree 1409' from DER, 770' left of centerline, 96' AGL/162' MSL. **Rwy 18**, tree 1614' from DER, 242' right of centerline, 68' AGL/137' MSL. Tree 1649' from DER, 45' right of centerline, 71' AGL/140' MSL. Tree 1659' from DER, 112' left of centerline, 77' AGL/146' MSL. Tree 1696' from DER, 619' left of centerline, 72' AGL/138' MSL. Tree 2149' from DER, 102' right of centerline, 76' AGL/145' MSL. **Rwy 22**, sign 99' from DER 459' right of centerline, 14' AGL/83' MSL. Tree 2613' from DER, 1052' right of centerline, 104' AGL/170' MSL. **Rwy 32**, tree 2361' from DER, 7' left of centerline, 77' AGL/160' MSL. Tree 1781' from DER, 342' right of centerline, 66' AGL/149' MSL. Tree 1709' from DER, 302' right of centerline, 78' AGL/161' MSL. Tree 2103' from DER, 325' left of centerline, 73' AGL/156' MSL. Light pole 384' from DER, 491' left of centerline, 18' AGL/97' MSL. **Rwy 36**, antenna 3728' from DER, 599' right of centerline, 107' AGL/190' MSL. Tower 3526' from DER, 478' right of centerline, 100' AGL/179' MSL. Tree 2756' from DER, 129' right of centerline, 68' AGL/151' MSL.

**NATCHEZ, MS**

HARDY-ANDERS FIELD NATCHEZ-ADAMS COUNTY (HEZ)

TAKEOFF MINIMUMS AND (OBSTACLE)

DEPARTURE PROCEDURES

ORIG 07354 (FAA)

TAKEOFF OBSTACLE NOTES: **Rwy 13**, multiple trees beginning 1445' from DER, 228' left of centerline, up to 101' AGL/380' MSL. Multiple trees beginning 17' from DER, 301' right of centerline, up to 99' AGL/334' MSL. **Rwy 18**, multiple trees beginning 1060' from DER, 162' left of centerline, up to 93' AGL/372' MSL. Multiple trees beginning 788' from DER, 374' right of centerline, up to 90' AGL/369' MSL. **Rwy 31**, multiple trees beginning 1320' from DER, 736' left of centerline, up to 105' AGL/364' MSL. Trees 2129' from DER, 813' right of centerline, 81' AGL/340' MSL. **Rwy 36**, multiple trees beginning 935' from DER, 327' left of centerline, up to 47' AGL/306' MSL. Trees 473' from DER, 517' right of centerline, 79' AGL/338' MSL.

06 DEC 2018 to 03 JAN 2019

06 DEC 2018 to 03 JAN 2019

**TAKEOFF MINIMUMS, (OBSTACLE) DEPARTURE PROCEDURES, AND  
DIVERSE VECTOR AREA (RADAR VECTORS)**

18340

SC-4

**TAKEOFF MINIMUMS, (OBSTACLE) DEPARTURE PROCEDURES, AND  
DIVERSE VECTOR AREA (RADAR VECTORS)**

18340

**NATCHITOCHEs, LA**

NATCHITOCHEs RGNL (IER)

TAKEOFF MINIMUMS AND (OBSTACLE)

DEPARTURE PROCEDURES

AMDT 7 14205 (FAA)

TAKEOFF MINIMUMS: **Rwy 25**, 300-1½ or std. w/min. climb of 336' per NM to 600. **Rwy 35**, std. w/min. climb of 202' per NM to 800, or alternatively, with standard takeoff minimums and normal 200' per NM climb gradient, takeoff must occur no later than 1300' prior to DER.

DEPARTURE PROCEDURE: **Rwy 35**, climb heading 342° to 700 before turning.

TAKEOFF OBSTACLE NOTES: **Rwy 17**, building, poles, beginning 90' from DER, 359' right of centerline, up to 32' AGL/142' MSL, tree 2573' from DER, 1022' right of centerline, 94' AGL/204' MSL. **Rwy 25**, tower 1.3 NM from DER, 632' right of centerline, 205' AGL/385' MSL. **Rwy 35**, light pole 1975' from DER, 418' right of centerline, 66' AGL/180' MSL. Trees beginning 1007' from DER, 311' right of centerline, up to 72' AGL/188' MSL.

**NEW ALBANY, MS**

NEW ALBANY-UNION COUNTY (M72)

TAKEOFF MINIMUMS AND (OBSTACLE)

DEPARTURE PROCEDURES

ORIG 07298

TAKEOFF MINIMUMS: **Rwy 18**, std. w/ min. climb of 245' per NM to 900, or 500-2¼ w/ min. climb of 207' per NM to 1000, or alternatively, w/ std. takeoff minimums and a normal 200'/NM climb gradient, takeoff must occur no later than 1500' prior to DER, or 800-2½ for climb in visual conditions.

DEPARTURE PROCEDURE: **Rwy 18**, for climb in visual conditions: Cross New Albany-Union County airport at or above 1100 before proceeding on course.

TAKEOFF OBSTACLE NOTES: **Rwy 18**, multiple trees beginning 146' from DER, 158' left of centerline, up to 100' AGL/519' MSL. Multiple trees beginning 387' from DER, 565' right of centerline, up to 100' AGL/499' MSL. **Rwy 36**, multiple trees beginning 467' from DER, 524' left of centerline, up to 100' AGL/499' MSL. Multiple trees beginning 2000' from DER, on centerline, up to 100' AGL/546' MSL.

**NEW IBERIA, LA**

ACADIANA RGNL (ARA)

TAKEOFF MINIMUMS AND (OBSTACLE)

DEPARTURE PROCEDURES

AMDT 1 17117 (FAA)

TAKEOFF MINIMUMS: **Rwy 17W**, **35W**, NA - environmental.

TAKEOFF OBSTACLE NOTES: **Rwy 17**, tree 41' from DER, 497' right of centerline, 12' AGL/32' MSL.

**NEW ORLEANS, LA**

LAKEFRONT (NEW)

TAKEOFF MINIMUMS AND (OBSTACLE)

DEPARTURE PROCEDURES

AMDT 1 11013 (FAA)

TAKEOFF MINIMUMS: **Rwy 18R**, std. w/ min. climb of 204' per NM to 1400, or alternatively, with standard takeoff minimums and a normal 200' per NM climb gradient, takeoff must occur no later than 1700' prior to DER.

DEPARTURE PROCEDURE: **Rwy 9**, climb heading 087° to 1400 before turning right. **Rwys 18L, 18R**, climb heading 177° to 1400 before turning left.

TAKEOFF OBSTACLE NOTES: **Rwy 9**, obstruction light on hangar 80' from DER, 419' right of centerline, 48' AGL/52' MSL. Obstruction lights on hangars, vehicles on road, and light poles beginning 288' from DER, 162' left of centerline, up to 68' AGL/72' MSL. Trees beginning 840' from DER, 222' right of centerline, up to 69' AGL/73' MSL. Light pole 2491' from DER, 254' left of centerline, 68' AGL/72' MSL. **Rwy 18L**, antenna 334' from DER, 418' left of centerline, 38' AGL/42' MSL. Rotating beacon 1451' from DER, 569' left of centerline, 94' AGL/98' MSL. Obstruction light on hangar 2035' from DER, 35' right of centerline, 58' AGL/62' MSL. **Rwy 18R**, obstruction light, pole, tree, vehicles on road, and train on tracks beginning 101' from DER, 175' left of centerline, up to 38' AGL/45' MSL. Obstruction light 106' from DER, on centerline, 12' AGL/19' MSL. Vehicles on road 296' from DER, on centerline, 15' AGL/22' MSL. Train on tracks 474' from DER, on centerline, 23' AGL/35' MSL. Obstruction lights beginning 484' from DER, 504' right of centerline, up to 40' AGL/47' MSL. Tree 677' from DER, 115' right of centerline, 32' AGL/39' MSL. Poles beginning 709' from DER, 524' right of centerline, up to 44' AGL/51' MSL. Pole, elevator, obstruction light on silo, and building beginning 1427' from DER, 421' right of centerline, up to 87' AGL/92' MSL. Antenna 2817' from DER, 953' left of centerline, 105' AGL/101' MSL. Tower 2943' from DER, 727' left of centerline, 103' AGL/100' MSL. Multiple poles and towers beginning 3165' from DER, left and right of centerline, up to 106' AGL/111' MSL. Tower 2.3 NM from DER, 3397' left of centerline, 369' AGL/373' MSL. **Rwy 27**, boats 300' from DER, left to right of centerline, up to 50' MSL. Obstruction lights on seawall 279' from DER, left to right of centerline, up to 11' AGL/15' MSL. **Rwy 36L**, pier 63' from DER, 7' right of centerline, 6' AGL/10' MSL. **Rwy 36R**, boats 350' from DER, left to right of centerline, up to 50' MSL.

06 DEC 2018 to 03 JAN 2019

06 DEC 2018 to 03 JAN 2019

**TAKEOFF MINIMUMS, (OBSTACLE) DEPARTURE PROCEDURES, AND  
DIVERSE VECTOR AREA (RADAR VECTORS)**

18340

SC-4

# TAKEOFF MINIMUMS, (OBSTACLE) DEPARTURE PROCEDURES, AND DIVERSE VECTOR AREA (RADAR VECTORS)

18340

## NEW ORLEANS, LA (CON'T)

LOUIS ARMSTRONG NEW ORLEANS

INTL (MSY)

TAKEOFF MINIMUMS AND (OBSTACLE)  
DEPARTURE PROCEDURES

AMDT 2 15288 (FAA)

TAKEOFF OBSTACLE NOTES: **Rwy 2**, multiple vehicles on roads beginning 3' from DER, 437' right of centerline, up to 26' AGL/28' MSL. Multiple trees beginning 493' from DER, 542' right of centerline, up to 38' AGL/40' MSL. Multiple poles beginning 831' from DER, 583' left of centerline, up to 34' AGL/36' MSL. Multiple signs beginning 906' from DER, 235' right of centerline, up to 49' AGL/51' MSL. Multiple buildings beginning 1369' from DER, 679' right of centerline, up to 48' AGL/50' MSL. Multiple trees beginning 1555' from DER, 574' left of centerline, up to 45' AGL/47' MSL. Antenna 1888' from DER, 692' right of centerline, 49' AGL/51' MSL. Obstruction light 1822' from DER, 834' right of centerline, 64' AGL/66' MSL. Crane 2412' from DER, 487' left of centerline, 81' AGL/83' MSL. **Rwy 11**, obstruction light 623' from DER, 620' right of centerline, 21' AGL/25' MSL. Pole 936' from DER, 663' right of centerline, 25' AGL/29' MSL. Multiple trees beginning 1051' from DER, 37' left of centerline, up to 96' AGL/100' MSL. Multiple trees beginning 1919' from DER, 157' right of centerline, up to 81' AGL/85' MSL. **Rwy 20**, vehicle on road 201' from DER, 458' left of centerline, 29' AGL/30' MSL. Sign 708' from DER, 688' left of centerline, 38' AGL/39' MSL. Rod on building 664' from DER, 249' left of centerline, 23' AGL/24' MSL. Pole 1124' from DER, 635' left of centerline, 31' AGL/32' MSL. Multiple poles beginning 1358' from DER, 420' right of centerline, up to 46' AGL/47' MSL. Tree 2057' from DER, 881' left of centerline, 67' AGL/68' MSL. Multiple trees beginning 2604' from DER, 622' right of centerline, up to 85' AGL/86' MSL. Ship 4166' from DER, on centerline, 152' AGL/153' MSL. **Rwy 29**, tree 1265' from DER, 748' left of centerline, 58' AGL/59' MSL. Multiple trees beginning 1541' from DER, 550' right of centerline, up to 65' AGL/66' MSL.

## NEW ORLEANS NAS JRB(ALVIN

CALENDER FLD) (KNBG)

NEW ORLEANS, LA

TAKEOFF MINIMUMS AND (OBSTACLE)  
DEPARTURE PROCEDURES

AMDT 1 18256

TAKEOFF MINIMUMS: **Rwy 14**, 300-1¼ w/ min. climb of 538'/NM to 500

DEPARTURE PROCEDURE: **Rwy 4**, diverse departures authorized 064° CW 224°. Right turn to departure heading only. **Rwy 22**, diverse departures authorized 045° CW 314°. **Rwy 32**, diverse departures authorized 141° CW 300° left turn to departure heading only.

TAKEOFF OBSTACLE NOTES: **Rwy 4**, building shelter 305' from DER, 569' right of cntrn, 34' AGL/37' MSL. **Rwy 14**, windsock 407' inward of DER, 307' left of cntrn, 0' AGL/9' MSL. Tree NE app Rwy 32 1095' from DER, 1257' left of cntrn, 78' AGL/74' MSL. Tank 3438' from DER, 1433' left of cntrn, 98' AGL/116' MSL. Terrain 0' from DER, 500' left of cntrn, 3' MSL. Terrain 0' from DER, 500' left of cntrn, -1' MSL. Terrain 0' from DER, 500' right of cntrn, 3' MSL.

## NEW ROADS, LA

FALSE RIVER RGNL (HZR)

TAKEOFF MINIMUMS AND (OBSTACLE)  
DEPARTURE PROCEDURES

ORIG 08157 (FAA)

TAKEOFF OBSTACLE NOTES: **Rwy 36**, fence 97' from DER, 248' right of centerline, 5' AGL/44' MSL. Pole 1263' from DER, 215' left of centerline, 45' AGL/84' MSL. Trees beginning 1268' from DER, 127' right of centerline, up to 110' AGL/159' MSL. Trees beginning 2436' from DER, 26' left of centerline, up to 127' AGL/176' MSL. **Rwy 18**, road beginning 86' from DER, 398' right of centerline, up to 15' AGL/49' MSL. Fence 220' from DER, 362' right of centerline, 6' AGL/39' MSL.

## OAKDALE, LA

ALLEN PARISH (ACP)

TAKEOFF MINIMUMS AND (OBSTACLE)  
DEPARTURE PROCEDURES

ORIG 06327 (FAA)

TAKEOFF OBSTACLE NOTES: **Rwy 18**, trees 400' from DER, 260' left of centerline, 30' AGL/134' MSL. **Rwy 36**, trees 1300' from DER, on centerline, 50' AGL/159' MSL.

## OKOLONA, MS

OKOLONA MUNI-RICHARD STOVALL

FIELD (5A4)

TAKEOFF MINIMUMS AND (OBSTACLE)  
DEPARTURE PROCEDURES

AMDT 1 14205 (FAA)

TAKEOFF OBSTACLE NOTES: **Rwy 18**, tree 47' from DER, 456' left of centerline, 69' AGL/390' MSL. Tree 423' from DER, 602' right of centerline, 85' AGL/396' MSL. Transmission line towers and trees, beginning 962' from DER, left and right of centerline, up to 79' AGL/402' MSL. **Rwy 36**, trees beginning 288' from DER, 529' right of centerline, up to 70' AGL/371' MSL. Trees beginning 771' from DER, left and right of centerline, up to 85' AGL/376' MSL. Trees beginning 1585' from DER, 34' right of centerline, up to 81' AGL/402' MSL. Trees beginning 3010' from DER, 1173' right of centerline, up to 106' AGL/427' MSL...

## OLIVE BRANCH, MS

OLIVE BRANCH (OLV)

TAKEOFF MINIMUMS AND (OBSTACLE)  
DEPARTURE PROCEDURES

AMDT 1 13346 (FAA)

TAKEOFF OBSTACLE NOTES: **Rwy 18**, ground beginning 164' from DER, 385' right of centerline, 401' MSL. Trees beginning 191' from DER, 395' left of centerline, up to 23' AGL/413' MSL. Trees beginning 1212' from DER, left and right of centerline, up to 100' AGL/480' MSL. Trees beginning 3028' from DER, 123' left of centerline, up to 93' AGL/483' MSL. Trees beginning 4193' from DER, left and right of centerline, up to 100' AGL/519' MSL. **Rwy 36**, trees beginning 1224' from DER, left and right of centerline, up to 100' AGL/509' MSL. Trees beginning 2763' from DER, left and right of centerline, up to 100' AGL/479' MSL.

# TAKEOFF MINIMUMS, (OBSTACLE) DEPARTURE PROCEDURES, AND DIVERSE VECTOR AREA (RADAR VECTORS)

18340

SC-4



# TAKEOFF MINIMUMS, (OBSTACLE) DEPARTURE PROCEDURES, AND DIVERSE VECTOR AREA (RADAR VECTORS)

18340

## OPELOUSAS, LA

ST. LANDRY PARISH-AHART FIELD (OPL)  
TAKEOFF MINIMUMS AND (OBSTACLE)  
DEPARTURE PROCEDURES  
AMDT 1 12152 (FAA)

TAKEOFF MINIMUMS: **Rwy 18**, 300-1¼ or std. w/min. climb of 261' per NM to 400.

TAKEOFF OBSTACLE NOTES: **Rwy 6**, vehicles on road 499' from DER, on centerline, up to 15' AGL/89' MSL. Buildings 94' from DER, 367' left of centerline, 25' AGL/99' MSL. Trees beginning 241' from DER, 274' left of centerline, up to 100' AGL/179' MSL. Trees beginning 909' from DER, 341' right of centerline, up to 100' AGL/174' MSL. Buildings 977' from DER, 710' right of centerline, 25' AGL/104' MSL. Poles beginning 1219' from DER, 626' right of centerline, 50' AGL/124' MSL. **Rwy 18**, trees beginning 132' from DER, 271' right of centerline, up to 100' AGL/155' MSL. Trees beginning 383' from DER, 358' left of centerline, up to 100' AGL/169' MSL. Tower 6046' from DER, 895' left of centerline, 207' AGL/269' MSL. Buildings 1072' from DER, 503' left of centerline, 25' AGL/99' MSL. Pole 2581' from DER, 443' left of centerline, 78' AGL/147' MSL. Vehicles on road 396' from DER, right and left of centerline, 15' AGL/89' MSL. **Rwy 24**, vehicles on road 255' from DER, on centerline, 15' AGL/84' MSL. Trees beginning 151' from DER, 311' left of centerline, up to 100' AGL/169' MSL. Buildings 345' from DER, 551' left of centerline, 25' AGL/94' MSL. Poles beginning 505' from DER, 394' left of centerline, 50' AGL/119' MSL. Trees beginning 254' from DER, 220' right of centerline, 100' AGL/169' MSL. Buildings 385' from DER, 269' right of centerline, 25' AGL/94' MSL. Poles beginning 527' from DER, 299' right of centerline, 50' AGL/119' MSL. **Rwy 36**, trees beginning 823' from DER, right and left of centerline, up to 100' AGL/158' MSL. Pole 1116' from DER, 147' right of centerline, 35' AGL/104' MSL.

## OXFORD, MS

UNIVERSITY-OXFORD (UOX)  
TAKEOFF MINIMUMS AND (OBSTACLE)  
DEPARTURE PROCEDURES  
AMDT 2 14317 (FAA)

TAKEOFF MINIMUMS: **Rwy 9**, 300-1½ or std. w/min. climb of 472' per NM to 800.

DEPARTURE PROCEDURE: **Rwy 9**, climb heading 092° to 900 before proceeding on course.

TAKEOFF OBSTACLE NOTES: **Rwy 9**, trees beginning 58' from DER, 237' right of centerline, up to 79' AGL/622' MSL. Trees beginning 140' from DER, 404' left of centerline, up to 84' AGL/555' MSL. Trees, tower and obstruction light antenna beginning 3729' from DER, left and right of centerline, up to 147' AGL/672' MSL. **Rwy 27**, tree 39' from DER, 494' right of centerline, up to 74' AGL/434' MSL. Trees beginning 602' from DER, 572' right of centerline, up to 94' AGL/474' MSL.

## PASCAGOULA, MS

TRENT LOTT INTL (PQL)  
TAKEOFF MINIMUMS AND (OBSTACLE)  
DEPARTURE PROCEDURES  
AMDT 1 11237 (FAA)

TAKEOFF MINIMUMS: **Rwy 17**, 300-1¼ or std. w/min. climb of 226' per NM to 400, or alternatively, with standard takeoff minimums and a normal 200' per NM climb gradient, takeoff must occur no later than 1600' prior to DER. **Rwy 35**, std. w/min. climb of 217' per NM to 1000 or 900-2½ for climb in visual conditions.

DEPARTURE PROCEDURE: **Rwy 35**, for climb in above conditions: cross Trent Lott Intl Airport at or above 800' MSL before proceeding on course.

TAKEOFF OBSTACLE NOTES: **Rwy 17**, trees beginning 1622' from DER, 46' left of centerline, up to 64' AGL/71' MSL. Tree 2298' from DER, 77' right of centerline, 71' AGL/80' MSL. Transmission tower 3912' from DER, 1412' left of centerline, 112' AGL/121' MSL. Sign 5417' from DER, 1141' right of centerline, 159' AGL/170' MSL. **Rwy 35**, tree 2997' from DER, 1162' right of centerline, 79' AGL/93' MSL.

## PATTERSON, LA

HARRY P WILLIAMS MEMORIAL (PTN)  
TAKEOFF MINIMUMS AND (OBSTACLE)  
DEPARTURE PROCEDURES  
AMDT 1A 12292 (FAA)

TAKEOFF OBSTACLE NOTES: **Rwy 6**, fence 2' from DER, 443' left of centerline, 4' AGL/11' MSL. Fence 197' from DER, 252' right of centerline, 7' AGL/14' MSL. Obstruction light on DME 490' from DER, 255' right of centerline, 21' AGL/28' MSL. Trees and pole beginning 772' from DER, 256' right of centerline, up to 97' AGL/102' MSL. **Rwy 24**, fence 84' from DER, 303' left of centerline, 8' AGL/14' MSL. Trees beginning 1876' from DER, 935' left of centerline, up to 76' AGL/85' MSL.

## PHILADELPHIA, MS

PHILADELPHIA MUNI (MPE)  
TAKEOFF MINIMUMS AND (OBSTACLE)  
DEPARTURE PROCEDURES  
AMDT 2 09295 (FAA)

TAKEOFF OBSTACLE NOTES: **Rwy 18**, trees beginning 35' from DER, 58' left of centerline and 276' right of centerline, up to 100' AGL/585' MSL. **Rwy 36**, trees beginning 184' from DER, 370' right of centerline, up to 75' AGL/494' MSL. Trees beginning 2500' from DER, 51' right of centerline 136' AGL/535' MSL.

## PICAYUNE, MS

PICAYUNE MUNI (MJD)  
TAKEOFF MINIMUMS AND (OBSTACLE)  
DEPARTURE PROCEDURES  
ORIG 08269 (FAA)

DEPARTURE PROCEDURE: **Rwy 36**, climb heading 359° to 800 before proceeding on course.

TAKEOFF OBSTACLE NOTES: **Rwy 18**, trees and bushes beginning 76' from DER, 18' left of centerline, up to 20' AGL/69' MSL. Trees and bushes beginning 211' from DER, 182' right of centerline, up to 28' AGL/77' MSL. **Rwy 36**, pole, trees, and bushes beginning 969' from DER, 183' left of centerline, up to 94' AGL/144' MSL. Pole, bush, and trees beginning 63' from DER, 74' right of centerline, up to 97' AGL/143' MSL.

# TAKEOFF MINIMUMS, (OBSTACLE) DEPARTURE PROCEDURES, AND DIVERSE VECTOR AREA (RADAR VECTORS)

18340

SC-4

**TAKEOFF MINIMUMS, (OBSTACLE) DEPARTURE PROCEDURES, AND  
DIVERSE VECTOR AREA (RADAR VECTORS)**

18340

**POLK AAF (KPOE),**

FORT POLK, LA

TAKEOFF MINIMUMS AND (OBSTACLE)  
DEPARTURE PROCEDURES  
ORIG 13178

TAKEOFF OBSTACLE NOTES: **Rwy 16**, Trees beginning 2284' from DER, 1004' left of centerline, up to 364' MSL. Trees beginning 3223' from DER, 1193' right of centerline, up to 365' MSL. **Rwy 34**, Trees beginning 2305' from DER, 470' left of centerline, up to 80' AGL/402' MSL. Trees beginning 2866' from DER, 1193' right of centerline, up to 449' MSL.

**POPLARVILLE, MS**

POPLARVILLE-PEARL RIVER COUNTY

(M13)

TAKEOFF MINIMUMS AND (OBSTACLE)  
DEPARTURE PROCEDURES  
ORIG 15344 (FAA)

TAKEOFF MINIMUMS: **Rwy 34**, 400-1¾ or std. w/min. climb of 405' per NM to 900.

TAKEOFF OBSTACLE NOTES: **Rwy 16**, trees beginning 504' from DER, 530' left of centerline, up to 100' AGL/399' MSL. Trees beginning 745' from DER, crossing centerline, up to 100' AGL/389' MSL. Trees beginning 1239' from DER, 450' right of centerline, up to 100' AGL/419' MSL. **Rwy 34**, trees beginning 104' from DER, 469' right of centerline, up to 100' AGL/419' MSL. Trees beginning 436' from DER, 467' left of centerline, up to 100' AGL/409' MSL. Trees beginning 2720' from DER, 1166' right of centerline, up to 100' AGL/429' MSL. Tower 1.3 NM from DER, 2414' right of centerline, 335' AGL/665' MSL.

**PRENTISS, MS**

PRENTISS-JEFFERSON DAVIS COUNTY

(M43)

TAKEOFF MINIMUMS AND (OBSTACLE)  
DEPARTURE PROCEDURES  
ORIG 08269 (FAA)

TAKEOFF OBSTACLE NOTES: **Rwy 12**, poles and trees beginning 168' from DER, 256' left of centerline, up to 85' AGL/544' MSL. Trees beginning 231' from DER, 264' right of centerline, up to 72' AGL/511' MSL. **Rwy 30**, vehicle on road and trees beginning 91' from DER, 110' left of centerline, up to 64' AGL/513' MSL. Trees beginning 673' from DER, 360' right of centerline, up to 81' AGL/530' MSL.

**RAYMOND, MS**

JOHN BELL WILLIAMS (JVW)

TAKEOFF MINIMUMS AND (OBSTACLE)  
DEPARTURE PROCEDURES  
AMDT 4 11237 (FAA)

DEPARTURE PROCEDURE: **Rwy 12**, climb via heading 124° to 2600 before proceeding on course.

**Rwy 30**, climb via heading 304° to 1600 before proceeding on course.

TAKEOFF OBSTACLE NOTES: **Rwy 12**, trees beginning 1' from DER, 132' right of centerline, up to 100' AGL/379' MSL. Trees beginning 1753' from DER, 788' left of centerline, up to 100' AGL/359' MSL. **Rwy 30**, pole 1522' from DER, 533' right of centerline, 57' AGL/287' MSL. Trees beginning 593' from DER, 426' right of centerline, up to 100' AGL/339' MSL. Trees beginning 36' from DER, 163' left of centerline, up to 100' AGL/349' MSL.

**RAYVILLE, LA**

JOHN H HOOKS JR MEMORIAL (M79)

TAKEOFF MINIMUMS AND (OBSTACLE)  
DEPARTURE PROCEDURES  
ORIG 09071 (FAA)

TAKEOFF MINIMUMS: **Rwys 9, 27**, NA-Environmental. TAKEOFF OBSTACLE NOTES: **Rwy 18**, building 104' from DER, 364' right of centerline, 22' AGL/101' MSL. Trees beginning 442' from DER, 230' left of centerline, up to 100' AGL/174' MSL. Trees beginning 1874' from DER, 972' right of centerline, up to 100' AGL/146' MSL. **Rwy 36**, trees beginning 20' from DER, 328' right of centerline, up to 100' AGL/156' MSL. Trees beginning 900' from DER, 300' left of centerline, up to 100' AGL/156' MSL. Trees beginning 1973' from DER, from left to right of centerline, up to 100' AGL/178' MSL.

**RESERVE, LA**

PORT OF SOUTH LOUISIANA EXECUTIVE

RGNL (APS)

TAKEOFF MINIMUMS AND (OBSTACLE)  
DEPARTURE PROCEDURES  
AMDT 1A 17005 (FAA)

TAKEOFF MINIMUMS: **Rwy 17**, 300-1¾ or std. w/ min. climb of 240' per NM to 400.

DEPARTURE PROCEDURE: **Rwy 17**, climb heading 173° to 1400 before turning right.

TAKEOFF OBSTACLE NOTES: **Rwy 17**, bush 43' from DER, 362' right of centerline, 3' AGL/8' MSL. Tree 131' from DER, 497' left of centerline, 22' AGL/22' MSL. Poles beginning 1377' from DER, 109' right of centerline, up to 40' AGL/46' MSL. Poles beginning 1482' from DER, 135' right of centerline, up to 42' AGL/46' MSL. Transmission towers beginning 1706' from DER, 184' right of centerline, up to 118' AGL/124' MSL. Transmission towers beginning 2156' from DER, 151' left of centerline, up to 73' AGL/78' MSL. Transmission tower 3209' from DER, 214' right of centerline, 86' AGL/93' MSL. Transmission tower 3293' from DER, 364' left of centerline, 92' AGL/98' MSL. Elevator 1.44 NM from DER, 114' right of centerline, 250' AGL/266' MSL. **Rwy 35**, rising terrain 14' from DER, 432' right of centerline, 7' MSL. Rising terrain 14' from DER, 260' left of centerline, 7' MSL. Trees beginning 424' from DER, 540' left of centerline, up to 74' AGL/78' MSL. Trees beginning 811' from DER, 621' right of centerline, up to 82' AGL/86' MSL. Trees beginning 1091' from DER, 44' left of centerline, up to 87' AGL/91' MSL. Trees beginning 1142' from DER, 100' right of centerline, up to 44' AGL/48' MSL. Trees beginning 1438' from DER, 60' left of centerline, up to 88' AGL/92' MSL. Trees beginning 1526' from DER, 9' right of centerline, up to 92' AGL/96' MSL. Trees beginning 2394' from DER, 40' right of centerline, up to 100' AGL/104' MSL. Trees beginning 2698' from DER, 13' left of centerline, up to 98' AGL/102' MSL.

06 DEC 2018 to 03 JAN 2019

06 DEC 2018 to 03 JAN 2019

**TAKEOFF MINIMUMS, (OBSTACLE) DEPARTURE PROCEDURES, AND  
DIVERSE VECTOR AREA (RADAR VECTORS)**

18340

SC-4

**TAKEOFF MINIMUMS, (OBSTACLE) DEPARTURE PROCEDURES, AND  
DIVERSE VECTOR AREA (RADAR VECTORS)**

18340

**RIPLEY, MS****RIPLEY (25M)****TAKEOFF MINIMUMS AND (OBSTACLE)****DEPARTURE PROCEDURES**

ORIG 07018 (FAA)

TAKEOFF MINIMUMS: **Rwy 3**, 300-1¼ or std. w/ min. climb of 233' per NM to 800, or alternatively, w/ std. takeoff minimums and a normal 200'/NM climb gradient, takeoff must occur no later than 2100' prior to DER.

DEPARTURE PROCEDURE: **Rwy 21**, climb heading 213° to 1100 before turning left.

TAKEOFF OBSTACLE NOTES: **Rwy 3**, multiple trees beginning 774' from DER, 189' left of centerline, up to 100' AGL/569' MSL. Multiple trees beginning 1485' from DER, 331' left of centerline, up to 100' AGL/576' MSL. Multiple trees beginning 1.2 NM from DER, 1852' right of centerline, up to 100' AGL/689' MSL. Multiple trees beginning 1.2 NM from DER, 9' left of centerline, up to 100' AGL/669' MSL. Multiple trees beginning 1.4 NM from DER, 2100' right of centerline, up to 100' AGL/699' MSL. **Rwy 21**, multiple trees beginning 198' from DER, 189' left of centerline, up to 100' AGL/519' MSL. Multiple trees beginning 333' from DER, 307' right of centerline, up to 100' AGL/519' MSL.

**RUSTON, LA****RUSTON RGNL (RSN)****TAKEOFF MINIMUMS AND (OBSTACLE)****DEPARTURE PROCEDURES**

ORIG 11181 (FAA)

TAKEOFF OBSTACLE NOTES: **Rwy 18**, rising terrain beginning 197' from DER, 259' right of centerline, up to 325' MSL. Trees beginning 123' from DER, 78' left of centerline, up to 100' AGL/411' MSL. Fences beginning 617' from DER, 234' left of centerline, up to 9' AGL/330' MSL. Vehicles on road beginning 652' from DER, 291' left of centerline, up to 18' AGL/339' MSL. Pole 1183' from DER, 516' right of centerline, 25' AGL/346' MSL. Trees beginning 1193' from DER, 23' right of centerline, up to 100' AGL/429' MSL. **Rwy 36**, rising terrain and trees beginning 69' from DER, 290' right of centerline, up to 100' AGL/349' MSL. Trees beginning 2308' from DER, 195' left of centerline, up to 100' AGL/389' MSL.

**SHREVEPORT, LA****SHREVEPORT DOWNTOWN (DTN)****TAKEOFF MINIMUMS AND (OBSTACLE)****DEPARTURE PROCEDURES**

AMDT 3B 16035 (FAA)

TAKEOFF MINIMUMS: **Rwy 23**, 300-1½ or std. w/min. climb of 215' per NM to 500. **Rwy 32**, std. w/min. climb of 215' per NM to 2700.

DEPARTURE PROCEDURE: **Rwy 23**, climb heading 234° to 800 before turning left.

TAKEOFF OBSTACLE NOTES: **Rwy 5**, trees 102' from DER, 137' right of centerline, up to 80' AGL/245' MSL. Trees 151' from DER, 247' left of centerline, up to 80' AGL/230' MSL. **Rwy 14**, building 24' from DER, 466' right of centerline, 12' AGL/191' MSL. Barge 1502' from DER, left and right of centerline, 60' AGL/238' MSL. Trees 1626' from DER, 25' right of centerline, up to 100' AGL/281' MSL. Trees 497' from DER, 73' left of centerline, up to 100' AGL/279' MSL. **Rwy 23**, rod on hanger 24' from DER, 304' left of centerline, 30' AGL/204' MSL. Vehicle on road 180' from DER, left and right of centerline, 15' AGL/188' MSL. Trees 734' from DER, 278' left of centerline, up to 80' AGL/229' MSL. Tower 1.2 NM from DER, 1698' right of centerline, 203' AGL/363' MSL. Tower 1.2 NM from DER, 901' right of centerline, 197' AGL/365' MSL. Pole 3891' from DER, 196' right of centerline, 125' AGL/295' MSL. **Rwy 32**, fence 12' from DER, 242' right of centerline, 10' AGL/180' MSL. Vehicles on road 71' from DER, left and right of centerline, up to 15' AGL/185' MSL. Tree 282' from DER, 556' right of centerline, 80' AGL/249' MSL. Trees beginning 373' from DER, 411' left of centerline, up to 90' AGL/262' MSL. Barge 1164' from DER, left and right of centerline, 60' AGL/238' MSL. Trees beginning 2029' from DER, 51' left of centerline, up to 110' AGL/267' MSL.

06 DEC 2018 to 03 JAN 2019

06 DEC 2018 to 03 JAN 2019

**TAKEOFF MINIMUMS, (OBSTACLE) DEPARTURE PROCEDURES, AND  
DIVERSE VECTOR AREA (RADAR VECTORS)**

18340

SC-4

# TAKEOFF MINIMUMS, (OBSTACLE) DEPARTURE PROCEDURES, AND DIVERSE VECTOR AREA (RADAR VECTORS)

18340

## SHREVEPORT, LA (CON'T)

SHREVEPORT RGNL (SHV)

TAKEOFF MINIMUMS AND (OBSTACLE)

DEPARTURE PROCEDURES

AMDT 1 13234 (FAA)

TAKEOFF MINIMUMS: **Rwy 6**, std. w/min. climb of 225' per NM to 900 or 900-2½ for climb in visual conditions.DEPARTURE PROCEDURE: **Rwy 6**, for climb in visual conditions: cross Shreveport Rgnl Airport at or above 1000 before proceeding on course. When executing VCOA, notify ATC prior to departure.

TAKEOFF OBSTACLE NOTES: **Rwy 6**, trees beginning 1476' from DER, left and right of centerline, up to 100' AGL/302' MSL. Antenna on oil tank 1.37 NM from DER, 1983' left of centerline, 210' AGL/ 440' MSL. Towers beginning 2.58 NM from DER, left and right of centerline, up to 434' AGL/ 669' MSL. **Rwy 14**, terrain 40' from DER, 295' right of centerline, 227' MSL. Vehicles on road beginning 105' from DER, left and right of centerline, up to 15' AGL/244' MSL. Navaid 774' from DER, 451' left of centerline, 18' AGL/ 242' MSL. Poles beginning 864' from DER, left and right of centerline, up to 24' AGL/ 254' MSL. Trees beginning 986' from DER, left and right of centerline, up to 59' AGL/ 289' MSL. Light pole 993' from DER, 765' right of centerline, 21' AGL/ 254' MSL. Train on tracks beginning 1064' from DER, left and right of centerline, up to 23' AGL/254' MSL. Trees beginning 2894' from DER, left and right of centerline, up to 100' AGL/368' MSL. **Rwy 24**, terrain 109' from DER, 471' right of centerline, 240' MSL. Vehicles on road beginning 375' from DER, left and right of centerline, up to 15' AGL/264' MSL. Trees beginning 2050' from DER, left and right of centerline, up to 100' AGL/362' MSL. **Rwy 32**, terrain 30' from DER, 345' left of centerline, 259' MSL. Vehicles on road beginning 744' from DER, left and right of centerline, up to 15' AGL/294' MSL. Trees beginning 1035' from DER, left and right of centerline, up to 100' AGL/342' MSL. sign, 1945' from DER, 776' left of centerline, 50' AGL/ 310' MSL.

## SLIDELL, LA

SLIDELL (ASD)

TAKEOFF MINIMUMS AND (OBSTACLE)

DEPARTURE PROCEDURES

ORIG 11 181 (FAA)

TAKEOFF OBSTACLE NOTES: **Rwy 18**, trees beginning 126' from DER, 103' left and right of centerline, up to 100' AGL/129' MSL. Bush 38' from DER, 422' left of centerline, 1' AGL/29' MSL. **Rwy 36**, tree 89' from DER, 460' right of centerline, 22' AGL/47' MSL.

## SPRINGHILL, LA

SPRINGHILL (SPH)

TAKEOFF MINIMUMS AND (OBSTACLE)

DEPARTURE PROCEDURES

AMDT 1 18088 (FAA)

TAKEOFF OBSTACLE NOTES: **Rwy 18**, trees beginning 6' from DER, 146' left of centerline, up to 273' MSL. Tree 816' from DER, 716' right of centerline, 67' AGL/287' MSL. Trees beginning 1096' from DER, 293' left of centerline, up to 277' MSL. Trees beginning 1166' from DER, 91' right of centerline, up to 291' MSL. Trees beginning 1331' from DER, 6' right of centerline, up to 91' AGL/293' MSL. Trees beginning 1345' from DER, 41' left of centerline, up to 280' MSL. Trees beginning 1437' from DER, 21' left of centerline, up to 283' MSL. Trees beginning 1552' from DER, 7' left of centerline, up to 291' MSL. Trees beginning 1648' from DER, 2' right of centerline, up to 307' MSL. Trees beginning 1812' from DER, 6' left of centerline, up to 297' MSL. Trees beginning 1840' from DER, 120' left of centerline, up to 298' MSL. Trees beginning 1854' from DER, 47' left of centerline, up to 302' MSL. Trees beginning 1871' from DER, 141' left of centerline, up to 113' AGL/305' MSL. Trees beginning 1972' from DER, 34' right of centerline, up to 311' MSL. Trees beginning 2051' from DER, 8' left of centerline, up to 83' AGL/309' MSL. Trees beginning 2333' from DER, 16' left of centerline, up to 103' AGL/318' MSL. Trees beginning 2342' from DER, 32' right of centerline, up to 83' AGL/312' MSL. Trees beginning 2542' from DER, 2' right of centerline, up to 98' AGL/319' MSL. Trees beginning 2844' from DER, 267' left of centerline, up to 96' AGL/319' MSL. Trees beginning 2938' from DER, 771' left of centerline, up to 324' MSL. Trees beginning 3100' from DER, 676' left of centerline, up to 99' AGL/331' MSL. Trees beginning 3257' from DER, 537' right of centerline, up to 99' AGL/336' MSL. **Rwy 36**, tree 36' from DER, 115' left of centerline, 7' AGL/210' MSL. Tree 109' from DER, 249' left of centerline, 5' AGL/211' MSL. Terrain 191' from DER, 489' left of centerline, 212' MSL. Terrain 408' from DER, 573' left of centerline, 217' MSL. Trees beginning 757' from DER, 676' right of centerline, up to 82' AGL/278' MSL. Tree 1026' from DER, 683' left of centerline, 86' AGL/292' MSL. Trees beginning 1127' from DER, 671' right of centerline, up to 80' AGL/283' MSL. Tree 1174' from DER, 802' left of centerline, 110' AGL/317' MSL. Trees beginning 1212' from DER, 4' left of centerline, up to 112' AGL/319' MSL. Trees beginning 1575' from DER, 63' right of centerline, up to 82' AGL/286' MSL. Tree 2080' from DER, 35' right of centerline, 289' MSL. Trees beginning 2106' from DER, 104' right of centerline, up to 292' MSL. Trees beginning 2129' from DER, 9' right of centerline, up to 295' MSL. Tree 2182' from DER, 322' right of centerline, 296' MSL. Trees beginning 2210' from DER, 77' right of centerline, up to 297' MSL. Trees beginning 2242' from DER, 113' right of centerline, up to 298' MSL. Trees beginning 2261' from DER, 4' right of centerline, up to 301' MSL. Trees beginning 2283' from DER, 49' right of centerline, up to 305' MSL. Trees beginning 2487' from DER, 30' right of centerline, up to 106' AGL/310' MSL.

06 DEC 2018 to 03 JAN 2019

06 DEC 2018 to 03 JAN 2019

# TAKEOFF MINIMUMS, (OBSTACLE) DEPARTURE PROCEDURES, AND DIVERSE VECTOR AREA (RADAR VECTORS)

18340

SC-4

**TAKEOFF MINIMUMS, (OBSTACLE) DEPARTURE PROCEDURES, AND  
DIVERSE VECTOR AREA (RADAR VECTORS)**

18340

**STARKVILLE, MS**

GEORGE M BRYAN (STF)  
TAKEOFF MINIMUMS AND (OBSTACLE)  
DEPARTURE PROCEDURES  
ORIG 07186 (FAA)

TAKEOFF OBSTACLE NOTES: **Rwy 18**, multiple trees beginning 52' from DER, 395' right of centerline up to 79' AGL/378' MSL. Trees 1037' from DER, 463' left of centerline, 45' AGL/365' MSL. Tower 5406' from DER, 402' left of centerline, 165' AGL/464' MSL. **Rwy 36**, windsock and trees beginning 24' from DER, 340' right of centerline up to 110' AGL/429' MSL. Trees 170' from DER, 323' left of centerline, 67' AGL/376' MSL.

**OKITIBBEHA (M51)**

TAKEOFF MINIMUMS AND (OBSTACLE)  
DEPARTURE PROCEDURES  
ORIG-A 14093 (FAA)

TAKEOFF OBSTACLE NOTES: **Rwy 14**, trees 117' from DER, 199' right of centerline, up to 100' AGL/359' MSL. Trees 207' from DER, 103' left of centerline, up to 100' AGL/359' MSL. Vehicle on road 28' from DER, on centerline, 15' AGL/265' MSL. **Rwy 19**, trees beginning 76' from DER, left and right of centerline, up to 100' AGL/379' MSL. **Rwy 32**, trees beginning 123' from DER, 372' left of centerline, up to 100' AGL/369' MSL. Trees beginning 378' from DER, right and left of centerline, up to 100' AGL/369' MSL. **Rwy 1**, trees beginning 242' from DER, 466' right of centerline, up to 100' AGL/359' MSL. Trees beginning 1190' from DER, left and right of centerline, up to 100' AGL/349' MSL.

**SULPHUR, LA**

SOUTHLAND FIELD (UXL)  
TAKEOFF MINIMUMS AND (OBSTACLE)  
DEPARTURE PROCEDURES  
ORIG 09071 (FAA)

TAKEOFF OBSTACLE NOTES: **Rwy 15**, numerous trees and poles beginning 200' from DER, left and right of centerline, up to 63' AGL/72' MSL. Tree 862' from DER, 494' right of centerline, 100' AGL/114' MSL. **Rwy 33**, numerous trees and poles beginning 64' from DER, left and right of centerline, up to 38' AGL/47' MSL. Tree 1849' from DER, 647' left of centerline, 100' AGL/114' MSL.

**TALLULAH/VICKSBURG, MS, LA**

VICKSBURG TALLULAH RGNL (TVR)  
TAKEOFF MINIMUMS AND (OBSTACLE)  
DEPARTURE PROCEDURES  
AMDT 1 13290 (FAA)

TAKEOFF OBSTACLE NOTES: **Rwy 18**, fence 200' from DER, 349' right of centerline, 6' AGL/91' MSL. Pole 1410' from DER, 512' right of centerline, 35' AGL/121' MSL. Trees beginning 1514' from DER, 881' left of centerline, up to 114' AGL/203' MSL. Trees 3258' from DER, 129' right of centerline, 94' AGL/179' MSL. **Rwy 36**, trees beginning 2382' from DER, 73' left of centerline, up to 89' AGL/177' MSL.

**THIBODAUX, LA**

THIBODAUX MUNI (L83)  
TAKEOFF MINIMUMS AND (OBSTACLE)  
DEPARTURE PROCEDURES  
ORIG 13066 (FAA)

TAKEOFF OBSTACLE NOTES: **Rwy 8**, terrain 1' from DER, 335' left of centerline, 10' MSL. Vehicle on road 7' from DER, 187' left of centerline, up to 15' AGL/24' MSL. Vehicle on road 11' from DER, 200' right of centerline, up to 15' AGL/24' MSL. Trees 144' from DER, 412' right of centerline, up to 100' AGL/109' MSL. Trees beginning 685' from DER, 62' right of centerline, up to 100' AGL/109' MSL. Tower 4157' from DER, 1355' right of centerline, 122' AGL/139' MSL. **Rwy 26**, trees beginning at DER, 135' left of centerline, up to 100' AGL/104' MSL. Trees beginning at DER, 146' right of centerline, up to 100' AGL/104' MSL. Trees and power lines beginning 2445' from DER, left and right of centerline, up to 100' AGL/104' MSL.

**TUNICA, MS**

TUNICA MUNI (UTA)  
TAKEOFF MINIMUMS AND (OBSTACLE)  
DEPARTURE PROCEDURES  
AMDT 2 10322 (FAA)

TAKEOFF OBSTACLE NOTES: **Rwy 35**, tree 1211' from DER, 803' right of centerline, 70' AGL/258' MSL.

**TUPELO, MS**

TUPELO RGNL (TUP)  
TAKEOFF MINIMUMS AND (OBSTACLE)  
DEPARTURE PROCEDURES  
AMDT 1 15064 (FAA)

TAKEOFF OBSTACLE NOTES: **Rwy 18**, runway lights 5' from DER, 4' left and right of centerline, 1' AGL/347' MSL. Trees beginning 1202' from DER, 804' left of centerline up to 100' AGL/400' MSL.

06 DEC 2018 to 03 JAN 2019

06 DEC 2018 to 03 JAN 2019

**TAKEOFF MINIMUMS, (OBSTACLE) DEPARTURE PROCEDURES, AND  
DIVERSE VECTOR AREA (RADAR VECTORS)**

18340

SC-4

# TAKEOFF MINIMUMS, (OBSTACLE) DEPARTURE PROCEDURES, AND DIVERSE VECTOR AREA (RADAR VECTORS)

18340

## VICKSBURG, MS

### VICKSBURG MUNI (VKS)

TAKEOFF MINIMUMS AND (OBSTACLE)  
DEPARTURE PROCEDURES  
AMDT 3 18312 (FAA)

TAKEOFF MINIMUMS: **Rwy 1**, std. w/min. climb of 290' per NM to 800 or 900 2-1/2 for VCOA. **Rwy 19**, 300-2 or std. w/min. climb of 425' per NM to 400.

VCOA: **Rwy 1**, obtain ATC approval for VCOA when requesting IFR clearance. Climb in visual conditions to cross Vicksburg Muni Airport at or above 900 before proceeding on course.

TAKEOFF OBSTACLE NOTES: **Rwy 1**, vegetation, fence beginning 1' from DER, 293' right of centerline, up to 12' AGL/114' MSL. Pole, fence beginning 146' from DER, 295' right of centerline, up to 26' AGL/128' MSL. Traverse way beginning 193' from DER, 9' left of centerline, up to 41' AGL/136' MSL. Pole, traverse way beginning 352' from DER, 218' right of centerline, up to 38' AGL/139' MSL. Pole 397' from DER, 315' right of centerline, 41' AGL/141' MSL. Tree, traverse way, pole beginning 438' from DER, 234' left of centerline, up to 59' AGL/152' MSL. Tree 468' from DER, 432' right of centerline, 76' AGL/175' MSL. Tree 683' from DER, 579' left of centerline, 81' AGL/174' MSL. Trees beginning 775' from DER, 239' right of centerline, up to 86' AGL/182' MSL. Trees beginning 905' from DER, 463' left of centerline, up to 85' AGL/176' MSL. Tree 1364' from DER, 45' right of centerline, 79' AGL/185' MSL. Tree 1365' from DER, 208' right of centerline, 80' AGL/189' MSL. Tree 1470' from DER, 183' left of centerline, 80' AGL/177' MSL. Trees beginning 1727' from DER, 76' left of centerline, up to 118' AGL/208' MSL. Trees beginning 1736' from DER, 5' right of centerline, up to 113' AGL/211' MSL. Trees beginning 2628' from DER, 119' left of centerline, up to 118' AGL/209' MSL. Trees beginning 2832' from DER, 153' right of centerline, up to 122' AGL/219' MSL. Stack 2.2 NM from DER, 2896' left of centerline, 502' AGL/592' MSL. **Rwy 19**, fence beginning 13' from DER, 78' right of centerline, up to 30' AGL/135' MSL. Trees beginning 176' from DER, 237' right of centerline, up to 88' AGL/193' MSL. Tree 235' from DER, 177' left of centerline, 9' AGL/110' MSL. Trees beginning 1518' from DER, 70' left of centerline, up to 83' AGL/181' MSL. Trees beginning 2008' from DER, 682' left of centerline, up to 105' AGL/203' MSL. Trees beginning 2544' from DER, 3' left of centerline, up to 124' AGL/217' MSL. Trees beginning 2632' from DER, 246' right of centerline, up to 100' AGL/196' MSL. Trees beginning 2848' from DER, 173' right of centerline, up to 94' AGL/208' MSL. Tree 2898' from DER, 597' left of centerline, 120' AGL/241' MSL. Tree, building, pole beginning 2971' from DER, 42' left of centerline, up to 131' AGL/255' MSL. Tree 3317' from DER, 331' right of centerline, 85' AGL/217' MSL. Tree, pole beginning 3693' from DER, 251' left of centerline, up to 124' AGL/295' MSL. Trees beginning 3836' from DER, 625' right of centerline, up to 119' AGL/245' MSL. Tree 3899' from DER, 143' right of centerline, 111' AGL/252' MSL. Trees beginning 3950' from DER, 321' right of centerline, up to 129' AGL/264' MSL. Tree, traverse way beginning 4060' from DER, 28' left of centerline, up to 112' AGL/302' MSL. Tree, pole beginning 4219' from DER, 53' right of centerline, up to 109' AGL/283' MSL. Tree, pole beginning 4465' from DER, 99' left of centerline, up to 126' AGL/316' MSL. Tree 5091' from DER, 1507' right of centerline, 85' AGL/284' MSL. Trees beginning 5195' from DER, 20' right of centerline, up to 110' AGL/299' MSL.

## VICKSBURG, MS

### VICKSBURG MUNI (VKS)

**Rwy 19 (CON'T)**, trees beginning 5197' from DER, 1197' left of centerline, up to 132' AGL/326' MSL. Trees beginning 5747' from DER, 69' left of centerline, up to 139' AGL/329' MSL. Trees beginning 1 NM from DER, 570' left of centerline, up to 116' AGL/334' MSL. Tree 1 NM from DER, 297' right of centerline, 106' AGL/302' MSL. Tree, pole beginning 1 NM from DER, 1084' left of centerline, up to 118' AGL/340' MSL. Tree 1 NM from DER, 26' right of centerline, 121' AGL/305' MSL. Tree 1.1 NM from DER, 1925' right of centerline, 136' AGL/351' MSL. Trees beginning 1.1 NM from DER, 106' left of centerline, up to 107' AGL/355' MSL. Tree, building beginning 1.1 NM from DER, 287' right of centerline, up to 96' AGL/359' MSL. Trees beginning 1.2 NM from DER, 69' right of centerline, up to 104' AGL/365' MSL. Tree, tower beginning 1.2 NM from DER, 855' right of centerline, up to 116' AGL/374' MSL. Trees beginning 1.4 NM from DER, 1371' left of centerline, up to 107' AGL/356' MSL. Tree 1.6 NM from DER, 1820' left of centerline, 110' AGL/361' MSL.

## VIDALIA, LA

### CONCORDIA PARISH (0R4)

TAKEOFF MINIMUMS AND (OBSTACLE)  
DEPARTURE PROCEDURES

ORIG 15344 (FAA)

DEPARTURE PROCEDURE: **Rwy 14**, climb heading 144° to 1100 before turning left.

TAKEOFF OBSTACLE NOTES: **Rwy 14**, trees beginning 37' from DER, 244' right of centerline, up to 41' AGL/92' MSL. Trees, buildings, and T-L tower beginning 58' from DER, 275' left of centerline, up to 83' AGL/134' MSL. Trees beginning 1115' from DER, 236' left of centerline, up to 58' AGL/112' MSL. T-L tower 3484' from DER, 522' right of centerline, 87' AGL/145' MSL. **Rwy 32**, pole 6' from DER, 420' left of centerline, 29' AGL/81' MSL. Trees beginning 803' from DER, 299' left of centerline, up to 31' AGL/82' MSL. Trees beginning 844' from DER, 432' right of centerline, up to 79' AGL/130' MSL. Trees and T-L tower beginning 2181' from DER, crossing centerline, up to 99' AGL/157' MSL.

## VIVIAN, LA

### VIVIAN (3F4)

TAKEOFF MINIMUMS AND (OBSTACLE)  
DEPARTURE PROCEDURES

AMDT 2 09099 (FAA)

TAKEOFF MINIMUMS: **Rwy 9**, 200-1¼ or std. w/ min. climb of 303' per NM to 600. **Rwy 27**, 300-2 or std. w/ min. climb of 203' per NM to 600, or alternatively, with standard takeoff minimums and a normal 200' per NM climb gradient, takeoff must occur no later than 1200' prior to DER.

DEPARTURE PROCEDURE: **Rwy 9**, climb heading 088° to 1900 before turning left. **Rwy 27**, climb heading 268° to 1900 before turning right.

TAKEOFF OBSTACLE NOTES: **Rwy 9**, tower 2476' from DER, 803' left of centerline, 100' AGL/360' MSL. Tank 1 NM from DER, 375' left of centerline, 162' AGL/432' MSL. Vehicle and road, crossing southwest to northeast beginning 1271' from DER, 645' right of centerline, 15' AGL/294' MSL. **Rwy 27**, vehicle and road 204' from DER, 495' right of centerline, 15' AGL/274' MSL.

# TAKEOFF MINIMUMS, (OBSTACLE) DEPARTURE PROCEDURES, AND DIVERSE VECTOR AREA (RADAR VECTORS)

18340

SC-4

**TAKEOFF MINIMUMS, (OBSTACLE) DEPARTURE PROCEDURES, AND  
DIVERSE VECTOR AREA (RADAR VECTORS)**

18340

**WEST POINT, MS**

MCCHAREN FIELD (M83)

TAKEOFF MINIMUMS AND (OBSTACLE)  
DEPARTURE PROCEDURES

AMDT 1A 14065 (FAA)

TAKEOFF MINIMUMS: **Rwy 36**, 400-1¼ or std. w/min.  
climb of 370' per NM to 800.TAKEOFF OBSTACLE NOTES: **Rwy 18**, numerous  
trees beginning 1' from DER, 250' left of centerline, up  
to 100' AGL/309' MSL. Terrain beginning 146' from  
DER, 22' left of centerline, up to 207' MSL. Fence 200'  
from DER, on centerline, up to 4' AGL/213' MSL.  
Terrain 151' from DER, 232' right of centerline, 207'  
MSL. Numerous trees beginning 913' from DER, 744'  
right of centerline, up to 100' AGL/279' MSL. Vehicle  
on road 268' from DER, on centerline, 10' AGL/219'  
MSL. **Rwy 36**, train on railroad track beginning 50'  
from DER, on centerline, 23' AGL/232' MSL. Terrain  
243' from DER, 262' left of centerline, 214' MSL.  
Numerous trees beginning 1287' from DER, 299' left of  
centerline, up to 100' AGL/349' MSL. Tree 2016' from  
DER, 138' right of centerline, 100' AGL/319' MSL.  
Tower 1.5 NM from DER, 1399' right of centerline, 353'  
AGL/597' MSL.**YAZOO CITY, MS**

YAZOO COUNTY (871)

TAKEOFF MINIMUMS AND (OBSTACLE)  
DEPARTURE PROCEDURES

ORIG 11349 (FAA)

TAKEOFF OBSTACLE NOTES: **Rwy 17**, trees beginning  
684' from DER, 131' left of centerline, up to 100'  
AGL/202' MSL. Trees beginning 1016' from DER, 103'  
right of centerline, up to 100' AGL/200' MSL. **Rwy 35**,  
trees beginning 2616' from DER, 837' left of centerline,  
up to 100' AGL/200' MSL. Trees beginning 303' from  
DER, 1228' right of centerline, up to 100' AGL/200' MSL.**WINNFIELD, LA**

DAVID G. JOYCE (0R5)

TAKEOFF MINIMUMS AND (OBSTACLE)  
DEPARTURE PROCEDURES

ORIG 09351 (FAA)

TAKEOFF OBSTACLE NOTES: **Rwy 9**, trees  
beginning 202' from DER, 330' right of centerline, 100'  
AGL/219' MSL, trees beginning 187' from DER, 256'  
left of centerline, 100' AGL/219' MSL. **Rwy 27**, trees  
beginning 192' from DER, 426' right of centerline, 100'  
AGL/259' MSL, trees beginning 3440' from DER, 1392'  
left of centerline, 100' AGL/289' MSL.**WINONA, MS**

WINONA-MONTGOMERY COUNTY (5A6)

TAKEOFF MINIMUMS AND (OBSTACLE)  
DEPARTURE PROCEDURES

ORIG 08045 (FAA)

TAKEOFF MINIMUMS: **Rwy 21**, 400-2¾ or std. w/ min.  
climb of 215' per NM to 900. Alternatively, with  
standard takeoff minimums and a normal 200'/NM  
climb gradient, takeoff must occur no later than 1900'  
prior to DER.DEPARTURE PROCEDURE: **Rwy 3**, Climb heading  
030° to 1000 before turning west.TAKEOFF OBSTACLE NOTES: **Rwy 21**, Tower 2.1 NM  
from DER, 2789' right of centerline, 350' AGL/703'  
MSL.

06 DEC 2018 to 03 JAN 2019

06 DEC 2018 to 03 JAN 2019

**TAKEOFF MINIMUMS, (OBSTACLE) DEPARTURE PROCEDURES, AND  
DIVERSE VECTOR AREA (RADAR VECTORS)**

18340

SC-4





NAME ALTERNATE MINIMUMS

**GALLIANO, LA**

SOUTH LAFOURCHE LEONARD  
MILLER JR (GAO).....**ILS or LOC/DME Rwy 36<sup>1</sup>**  
**RNAV (GPS) Rwy 18**  
**RNAV (GPS) Rwy 36**

NA when local weather not available.

<sup>1</sup>ILS, Category C, D, 700-2.**GONZALES, LA**

LOUISIAN RGNL (REG).....**RNAV (GPS) Rwy 35**  
Category D, 800-2<sup>1</sup>/<sub>4</sub>.

**GREENVILLE, MS**

GREENVILLE-MID  
DELTA (GLH).....**ILS or LOC Rwy 18L<sup>2</sup>**  
**NDB Rwy 36L<sup>1</sup>**  
**NDB Rwy 36R<sup>1</sup>**  
**RNAV (GPS) Rwy 18L<sup>2</sup>**  
**RNAV (GPS) Rwy 18R<sup>2</sup>**  
**RNAV (GPS) Rwy 36L<sup>2</sup>**  
**RNAV (GPS) Rwy 36R<sup>2</sup>**  
**VOR/DME Rwy 18R<sup>2</sup>**

<sup>1</sup>NA when control tower closed.<sup>2</sup>NA when local weather not available.**GREENWOOD, MS**

GREENWOOD-  
LEFLORE (GWO).....**ILS or LOC Rwy 18<sup>1</sup>**  
**RNAV (GPS) Rwy 5<sup>2</sup>**  
**RNAV (GPS) Rwy 18<sup>2</sup>**  
**RNAV (GPS) Rwy 36<sup>2</sup>**  
**VOR Rwy 5<sup>2</sup>**

NA when local weather not available.

<sup>1</sup>ILS, LOC, Category C, 900-2<sup>1</sup>/<sub>2</sub>; Category D, 1000-3.<sup>2</sup>Category C, 900-2<sup>1</sup>/<sub>2</sub>; Category D, 1000-3.**GULFPORT, MS**

GULFPORT-BILOXI  
INTL (GPT).....**ILS Z or LOC Z Rwy 14<sup>2</sup>**  
**ILS Z or LOC Z Rwy 32<sup>1,2</sup>**  
**RADAR-1<sup>3</sup>**  
**RNAV (GPS) Rwy 14<sup>4</sup>**  
**RNAV (GPS) Rwy 18<sup>4</sup>**  
**RNAV (GPS) Rwy 32<sup>4</sup>**  
**RNAV (GPS) Rwy 36<sup>4</sup>**  
**VOR Y Rwy 14<sup>4</sup>**  
**VOR Y Rwy 32<sup>4</sup>**  
**VOR Z Rwy 32<sup>3</sup>**  
**VOR Z or TACAN Z Rwy 14<sup>3</sup>**

<sup>1</sup>NA when control tower closed.<sup>2</sup>ILS, Category B, 700-2; Category C, 800-2<sup>1</sup>/<sub>4</sub>; Category D, 800-2<sup>1</sup>/<sub>2</sub>; Category E, 800-2<sup>3</sup>/<sub>4</sub>; LOC, Category C, 800-2<sup>1</sup>/<sub>4</sub>; Category D, 800-2<sup>1</sup>/<sub>2</sub>; Category E, 800-2<sup>3</sup>/<sub>4</sub>.<sup>3</sup>Category C, 800-2<sup>1</sup>/<sub>4</sub>; Category D, 800-2<sup>1</sup>/<sub>2</sub>; Category E, 800-2<sup>3</sup>/<sub>4</sub>;<sup>4</sup>Category C, 800-2<sup>1</sup>/<sub>4</sub>; Category D, 800-2<sup>1</sup>/<sub>2</sub>;

NAME ALTERNATE

**HAMMOND, LA**

HAMMOND NORTHSORE  
RGNL (HDC).....**RNAV (GPS) Rwy 18**  
**RNAV (GPS) Rwy 31**  
**RNAV (GPS) Rwy 36**

NA when local weather not available.

**HATTIESBURG, MS**

HATTIESBURG BOBBY L. CHAIN  
MUNI (HBG).....**RNAV (GPS) Y Rwy 13**  
NA when local weather not available.

**HATTIESBURG/LAUREL, MS**

HATTIESBURG-LAUREL  
RGNL (PIB).....**RNAV (GPS) Rwy 18**  
**RNAV (GPS) Rwy 36**

NA when local weather not available.

**HOUMA, LA**

HOUMA-TERREBONNE  
(HUM).....**COPTER VOR/DME Rwy 12**  
**ILS or LOC Rwy 18<sup>2,3</sup>**  
**RNAV (GPS) Rwy 12<sup>1</sup>**  
**RNAV (GPS) Rwy 18**  
**RNAV (GPS) Rwy 30**  
**RNAV (GPS) Rwy 36**  
**VOR/DME Rwy 30**

NA when local weather not available.

<sup>1</sup>Category D, 800-2<sup>1</sup>/<sub>4</sub>.<sup>2</sup>NA when control tower closed.<sup>3</sup>ILS, LOC, Category C, 800-2<sup>1</sup>/<sub>4</sub>; Category D, 800-2<sup>1</sup>/<sub>2</sub>.**JACKSON, MS**

HAWKINS FIELD (HKS).....**ILS or LOC Rwy 16<sup>1,2</sup>**  
**RNAV (GPS) Rwy 16<sup>3</sup>**  
**RNAV (GPS) Rwy 34<sup>3</sup>**

NA when local weather not available.

<sup>1</sup>NA when control tower closed.<sup>2</sup>ILS, LOC, Category C, 800-2<sup>1</sup>/<sub>4</sub>; Category D, 1000-3.<sup>3</sup>Category C, 800-2<sup>1</sup>/<sub>4</sub>; Category D, 1000-3.

NAME ALTERNATE MINIMUMS

**JACKSON, MS (CON'T)**

JACKSON-MEDGAR WILEY EVERS  
 INTL (JAN).....**ILS or LOC Rwy 16L**<sup>123</sup>  
   **ILS or LOC Rwy 34L**<sup>123</sup>  
   **RADAR-1**<sup>4</sup>  
   **RNAV (GPS) Rwy 16L**<sup>35</sup>  
   **RNAV (GPS) Rwy 16R**<sup>35</sup>  
   **RNAV (GPS) Rwy 34L**<sup>35</sup>  
   **RNAV (GPS) Rwy 34R**<sup>35</sup>  
   **VOR/DME or TACAN Rwy 16L**<sup>35</sup>  
   **VOR/DME or TACAN Rwy 16R**<sup>35</sup>  
   **VOR/DME or TACAN Rwy 34L**<sup>35</sup>  
   **VOR/DME or TACAN Rwy 34R**<sup>35</sup>

- <sup>1</sup>NA when control tower closed.
- <sup>2</sup>ILS, Category D, 700-2; Category E, 700-2<sup>1</sup>/<sub>2</sub>;  
LOC, Category E, 800-2<sup>1</sup>/<sub>2</sub>.
- <sup>3</sup>NA when local weather not available.
- <sup>4</sup>Category E, 800-2<sup>1</sup>/<sub>4</sub>.
- <sup>5</sup>Category E, 800-2<sup>1</sup>/<sub>2</sub>.

**JENNINGS, LA**

JENNINGS (3R7).....**RNAV (GPS) Rwy 8**  
   **RNAV (GPS) Rwy 26**  
 NA when local weather not available.

**LAFAYETTE, LA**

LAFAYETTE RGNL/PAUL FOURNET  
 FIELD (LFT).....**ILS or LOC Rwy 4R**<sup>1</sup>  
   **ILS or LOC Rwy 22L**<sup>12</sup>  
   **RNAV (GPS) Rwy 4R**  
   **RNAV (GPS) Rwy 22L**  
   **RNAV (GPS) Rwy 29**  
   **VOR/DME Rwy 11**

- NA when local weather not available.
- <sup>1</sup>ILS, Category D, 700-2.
- <sup>2</sup>NA when control tower closed.

**LAKE CHARLES, LA**

CHENNAULT INTL (CWF).....**ILS or LOC Rwy 15**<sup>12</sup>  
   **RNAV (GPS) Rwy 33**<sup>3</sup>

- <sup>1</sup>NA when control tower closed.
- <sup>2</sup>Category E, 900-3.
- <sup>3</sup>NA when local weather not available.

**LAKE CHARLES**

RGNL (LCH).....**ILS or LOC Rwy 15**<sup>1</sup>  
   **LOC BC Rwy 33**

- NA when control tower closed.
- <sup>1</sup>ILS, Category D, 700-2.

NAME ALTERNATE

**MC COMB, MS**

MC COMB/PIKE COUNTY/JOHN E LEWIS  
 FIELD (MCB).....**ILS or LOC Rwy 16**<sup>1</sup>  
   **RNAV (GPS) Rwy 16**<sup>2</sup>  
   **RNAV (GPS) Rwy 34**<sup>2</sup>  
   **VOR/DME-A**<sup>3</sup>

- <sup>1</sup>LOC, Category D, 800-2<sup>1</sup>/<sub>2</sub>.
- <sup>2</sup>Category D, 800-2<sup>1</sup>/<sub>2</sub>.
- <sup>3</sup>NA when local weather not available.

**MERIDIAN, MS**

KEY FIELD (MEI).....**ILS or LOC Rwy 1**<sup>123</sup>  
   **ILS or LOC Rwy 19**<sup>136</sup>  
   **RNAV (GPS) Rwy 1**<sup>37</sup>  
   **RNAV (GPS) Rwy 4**<sup>34</sup>  
   **RNAV (GPS) Rwy 19**<sup>35</sup>  
   **RNAV (GPS) Rwy 22**<sup>34</sup>  
   **VOR-A**<sup>7</sup>

- <sup>1</sup>NA when control tower closed.
- <sup>2</sup>ILS, Categories A, B, C, 700-2; Category D, 900-2<sup>3</sup>/<sub>4</sub>; Category E, 900-3. LOC, Category D, 900-2<sup>3</sup>/<sub>4</sub>; Category E, 900-3.
- <sup>3</sup>NA when local weather not available.
- <sup>4</sup>Category D, 900-2<sup>3</sup>/<sub>4</sub>.
- <sup>5</sup>Category D, 900-2<sup>3</sup>/<sub>4</sub>; Category E, 900-3.
- <sup>6</sup>ILS, Categories A, B, 800-2; Category C, 800-2<sup>1</sup>/<sub>4</sub>; Category D, 900-2<sup>3</sup>/<sub>4</sub>; Category E, 900-3; LOC, Category C, 800-2<sup>1</sup>/<sub>4</sub>; Category D, 900-2<sup>3</sup>/<sub>4</sub>; Category E, 900-3.
- <sup>7</sup>Category D, 900-2<sup>3</sup>/<sub>4</sub>; Category E, 900-3.

**MINDEN, LA**

MINDEN (MNE).....**RNAV (GPS) Rwy 1**  
   **RNAV (GPS) Rwy 19**  
   **VOR/DME-A**<sup>1</sup>

- NA when control tower closed.
- <sup>1</sup>Categories A, B, 1300-2; Categories C, D, 1300-3.

**MONROE, LA**

MONROE  
 RGNL (MLU).....**ILS or LOC Rwy 4**<sup>1</sup>  
   **ILS or LOC Rwy 22**<sup>1</sup>  
   **VOR/DME Rwy 4**<sup>2</sup>  
   **VOR/DME Rwy 32**<sup>2</sup>

- <sup>1</sup>NA when control tower closed.
- <sup>2</sup>Category D, 1100-3.

**NATCHEZ, MS**

HARDY-ANDERS FIELD NATCHEZ-ADAMS  
 COUNTY (HEZ).....**RNAV (GPS) Rwy 13**  
   **RNAV (GPS) Rwy 18**  
   **RNAV (GPS) Rwy 31**  
   **RNAV (GPS) Rwy 36**  
   **VOR Rwy 18**

- NA when local weather not available.

06 DEC 2018 to 03 JAN 2019

06 DEC 2018 to 03 JAN 2019

NAME ALTERNATE MINIMUMS

**NATCHITOCHE, LA**

NATCHITOCHE  
 RGNL (IER).....**RNAV (GPS) Rwy 17**  
**RNAV (GPS) Rwy 35**  
 NA when local weather not available.

**NEW IBERIA, LA**

ACADIANA RGNL (ARA).....**ILS or LOC Rwy 35<sup>12</sup>**  
**VOR or TACAN Rwy 17<sup>3</sup>**  
**VOR Rwy 35<sup>3</sup>**

- <sup>1</sup>NA when LFT APP CON closed.  
<sup>2</sup>ILS Category D, 700-2; Category E, 900-3; LOC, Category E, 900-3.  
<sup>3</sup>Category E, 900-3.

**NEW ORLEANS, LA**

LAKEFRONT (NEW).....**ILS or LOC Rwy 18R<sup>12</sup>**  
**RNAV (GPS) Rwy 18R**  
**RNAV (GPS) Rwy 36L**  
**VOR/DME Rwy 36L**

- NA when local weather not available.  
<sup>1</sup>NA when control tower closed.  
<sup>2</sup>ILS, Category D, 700-2.

LOUIS ARMSTRONG  
 NEW ORLEANS INTL (MSY).....**LOC Rwy 20**  
 Category D, 800-2<sup>1</sup>/<sub>4</sub>.

**OAKDALE, LA**

ALLEN PARISH (ACP).....**RNAV (GPS) Rwy 18**  
**RNAV (GPS) Rwy 36**  
 NA when local weather not available.

**OLIVE BRANCH, MS**

OLIVE BRANCH (OLV).....**ILS or LOC Rwy 18<sup>12</sup>**  
**LOC Rwy 36<sup>23</sup>**  
**RNAV (GPS) Rwy 18<sup>3</sup>**  
**RNAV (GPS) Rwy 36<sup>3</sup>**

- NA when local weather not available.  
<sup>1</sup>ILS, Categories, A, B, C, 700-2; Category D, 800-2<sup>1</sup>/<sub>2</sub>; LOC, Category D, 800-2<sup>1</sup>/<sub>2</sub>.  
<sup>2</sup>NA when control tower closed.  
<sup>3</sup>Category D, 800-2<sup>1</sup>/<sub>2</sub>.

**OXFORD, MS**

UNIVERSITY-  
 OXFORD (UOX).....**RNAV (GPS) Rwy 9**  
**RNAV (GPS) Rwy 27**  
**VOR/DME-A**

NA when local weather not available.  
 Category C, 1000-2<sup>1</sup>/<sub>4</sub>; Category D, 1000-3.

NAME ALTERNATE

**PASCAGOULA, MS**

TRENT LOTT  
 INTL (PQL).....**ILS or LOC Rwy 17<sup>1</sup>**  
**RNAV (GPS) Rwy 17**  
**RNAV (GPS) Rwy 35**

NA when local weather not available.  
<sup>1</sup>ILS, LOC, Category A, B, 900-2; Category C, 900-2<sup>1</sup>/<sub>4</sub>; Category D, 900-3.

**PATTERSON, LA**

HARRY P WILLIAMS  
 MEMORIAL (PTN).....**RNAV (GPS) Rwy 6**  
**RNAV (GPS) Rwy 24**

NA when local weather not available.

**PHILADELPHIA, MS**

PHILADELPHIA  
 MUNI (MPE).....**RNAV (GPS) Rwy 18**  
**RNAV (GPS) Rwy 36**

NA when local weather not available.

**PICAYUNE, MS**

PICAYUNE  
 MUNI (MJD).....**RNAV (GPS) Y Rwy 18**  
**RNAV (GPS) Z Rwy 18<sup>1</sup>**  
**RNAV (GPS) Rwy 36<sup>1</sup>**  
**VOR-A**

NA when local weather not available.  
<sup>1</sup>Category D, 1000-3.

**POLK AAF (KPOE)**

FORT POLK, LA.....**NDB Rwy 16**  
 Category C, 800-2<sup>1</sup>/<sub>4</sub>; Category D, 800-2<sup>1</sup>/<sub>2</sub>.

**RAYMOND, MS**

JOHN BELL  
 WILLIAMS (JVV).....**ILS or LOC Rwy 12<sup>1</sup>**  
**RNAV (GPS) Rwy 12<sup>2</sup>**  
**RNAV (GPS) Rwy 30<sup>2</sup>**

NA when local weather not available  
<sup>1</sup>ILS, Category C, 800-2, Category D, 800-2<sup>1</sup>/<sub>4</sub>;  
 LOC, Category D, 800-2<sup>1</sup>/<sub>4</sub>.  
<sup>2</sup>Category D, 800-2<sup>1</sup>/<sub>4</sub>.

**RESERVE, LA**

PORT OF SOUTH LOUISIANA EXECUTIVE  
 RGNL (APS).....**RNAV (GPS) Rwy 17**  
**RNAV (GPS) Rwy 35**  
**VOR Rwy 35**

NA when local weather not available.  
 Category C, 900-2<sup>1</sup>/<sub>2</sub>.

**RUSTON, LA**

RUSTON RGNL (RSN).....**RNAV (GPS) Rwy 18**  
**RNAV (GPS) Rwy 36**

NA when local weather not available.

18312

NAME ALTERNATE MINIMUMS

**SHREVEPORT, LA**

SHREVEPORT  
DOWNTOWN (DTN).....**LOC Rwy 14**<sup>12</sup>  
**RNAV (GPS) Rwy 14**  
**RNAV (GPS) Rwy 32**

Category C, 1000-2<sup>3</sup>/<sub>4</sub>; Category D, 1000-3.<sup>1</sup>NA when control tower closed.<sup>2</sup>NA when local weather not available.**SHREVEPORT**

RGNL (SHV).....**ILS or LOC Rwy 14**<sup>1</sup>  
**ILS or LOC Rwy 32**<sup>2</sup>  
**LOC Rwy 6**<sup>3</sup>  
**RNAV (GPS) Rwy 6**<sup>4</sup>  
**RNAV (GPS) Rwy 14**<sup>4</sup>  
**RNAV (GPS) Rwy 24**<sup>4</sup>  
**RNAV (GPS) Rwy 32**<sup>4</sup>

<sup>1</sup>ILS, Category C, 800-2; Category D, 900-2<sup>3</sup>/<sub>4</sub>; Category E, 900-3. LOC, Category D, 900-2<sup>3</sup>/<sub>4</sub>; Category E, 900-3.<sup>2</sup>ILS, Category C, 800-2; Category D, 900-2<sup>3</sup>/<sub>4</sub>. LOC, Category D, 900-2<sup>3</sup>/<sub>4</sub>.<sup>3</sup>Category D, 900-2<sup>3</sup>/<sub>4</sub>; Category E, 900-3.<sup>4</sup>Category D, 900-2<sup>3</sup>/<sub>4</sub>.**STARKVILLE, MS**

GEORGE M  
BRYAN (STF).....**RNAV (GPS) Rwy 18**  
**RNAV (GPS) Rwy 36**<sup>1</sup>

Category D, 800-2<sup>1</sup>/<sub>4</sub>.<sup>1</sup>NA when local weather not available.**SULPHUR, LA**

SOUTHLAND FIELD (UXL).....**LOC Rwy 15**  
**RNAV (GPS) Rwy 15**  
**RNAV (GPS) Rwy 33**  
**VOR/DME-A**

NA when local weather not available.

**TALLULAH, LA**

VICKSBURG TALLULAH  
RGNL (TVR).....**RNAV (GPS) Rwy 18**  
**RNAV (GPS) Rwy 36**

NA when local weather not available.

**TUNICA, MS**

TUNICA MUNI (UTA).....**ILS or LOC Rwy 35**  
**RNAV (GPS) Rwy 17**  
**RNAV (GPS) Rwy 35**  
**VOR/DME-A**

NA when local weather not available.

NAME ALTERNATE

**TUPELO, MS**

TUPELO RGNL (TUP).....**COPTER VOR 023**<sup>°</sup>  
**ILS Y or LOC Y Rwy 36**<sup>1</sup>  
**ILS Z or LOC Z Rwy 36**<sup>1</sup>  
**RNAV (GPS) Rwy 18**<sup>1</sup>  
**RNAV (GPS) Rwy 36**<sup>1</sup>  
**VOR Rwy 18**<sup>1</sup>

NA when local weather not available.

<sup>1</sup>Category D, 800-2<sup>1</sup>/<sub>2</sub>.**VICKSBURG, MS**

VICKSBURG  
MUNI (VKS).....**RNAV (GPS) Rwy 1**<sup>1</sup>  
**RNAV (GPS) Rwy 19**<sup>2</sup>

<sup>1</sup>Category D, 800-2<sup>1</sup>/<sub>2</sub>.<sup>2</sup>Category C, 800-2<sup>1</sup>/<sub>4</sub>; Category D, 800-2<sup>1</sup>/<sub>2</sub>.

06 DEC 2018 to 03 JAN 2019

06 DEC 2018 to 03 JAN 2019

18312

M5