


LOC I-VLD <b>110.9</b>	APP CRS <b>356°</b>	Rwy Idg <b>8002</b>
		TDZE <b>200</b>
		Apr Elev <b>203</b>

# ILS or LOC RWY 36

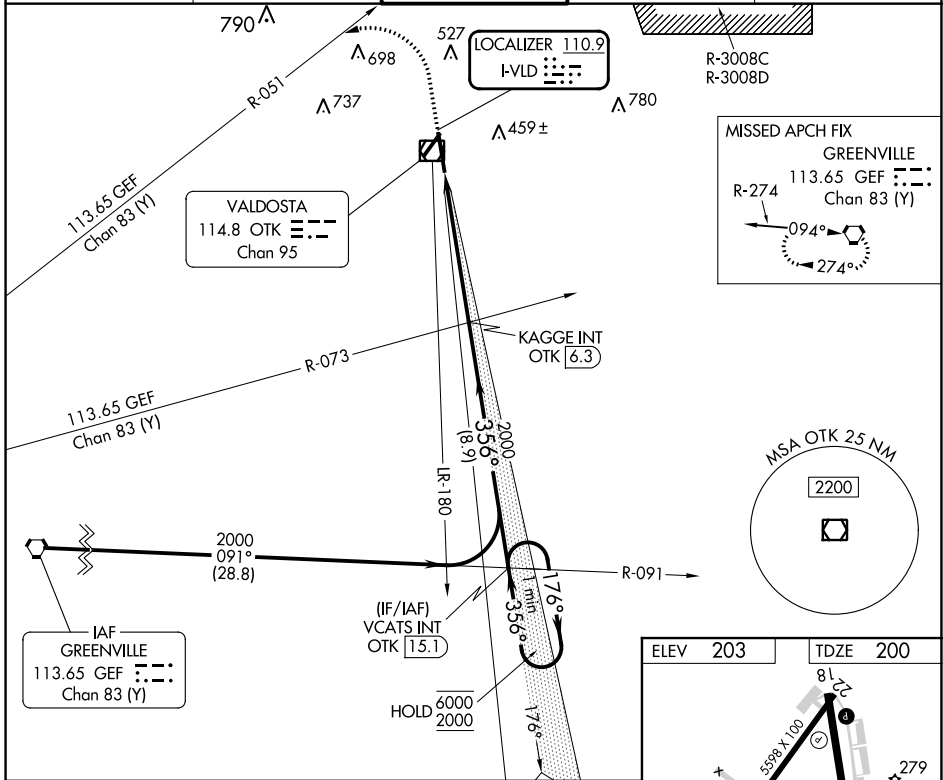
VALDOSTA RGNL (VLD)

**⚠** Rwy 36 helicopter visibility reduction below 3/4 SM NA. DME from OTK VOR/DME. DME use requires simultaneous reception of I-VLD and OTK DME. For inop ALS, increase S-ILS 36 all Cats visibility to 3/8 SM, increase S-LOC 36 Cats A and B visibility to 1 SM and Cat E visibility to 1 1/4 SM.

**MALSR** 

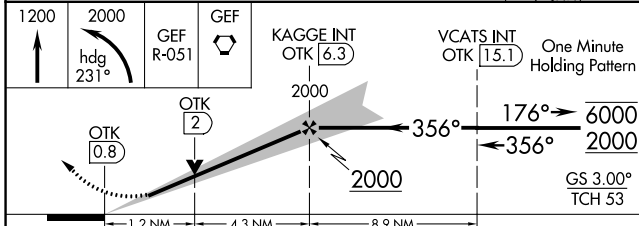
**MISSED APPROACH:** Climb to 1200 then climbing left turn to 2000 on heading 231° and GEF R-051 to GEF VORTAC and hold.

ASOS <b>126.225</b>	VALDOSTA APP CON * <b>126.6 285.6</b>	VALDOSTA TOWER * <b>128.35 (CTAF)</b>	GND CON <b>121.7</b>	UNICOM <b>122.95</b>
------------------------	--	--	-------------------------	-------------------------

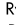


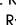
SE-4, 22 FEB 2024 to 21 MAR 2024

SE-4, 22 FEB 2024 to 21 MAR 2024



ELEV	203	TDZE	200
------	-----	------	-----

**REIL Rwy 18** 

**HIRL Rwy 18-36** 

**REIL Rws 4 and 22**

**MIRL Rws 4-22**

FAF to MAP 5.5 NM

Knots	60	90	120	150	180
Min:Sec	5:30	3:40	2:45	2:12	1:50

CATEGORY	A	B	C	D	E
S-ILS 36		489-3/4	289 (300-3/4)		
S-LOC 36		640-3/4	440 (500-3/4)		
CIRCLING	640-1 437 (500-1)	700-1 497 (500-1)	900-2 697 (700-1)	1020-2 3/4 817 (900-2 3/4)	1040-3 837 (900-3)

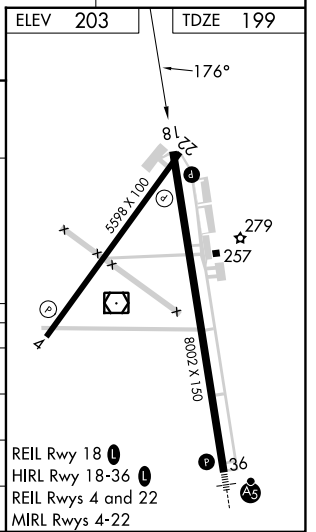
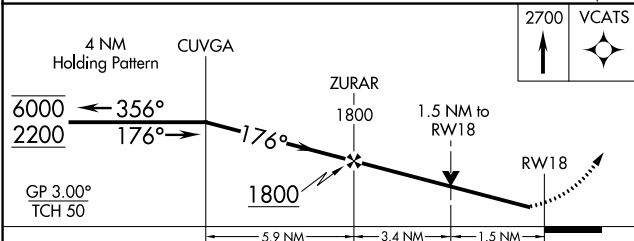
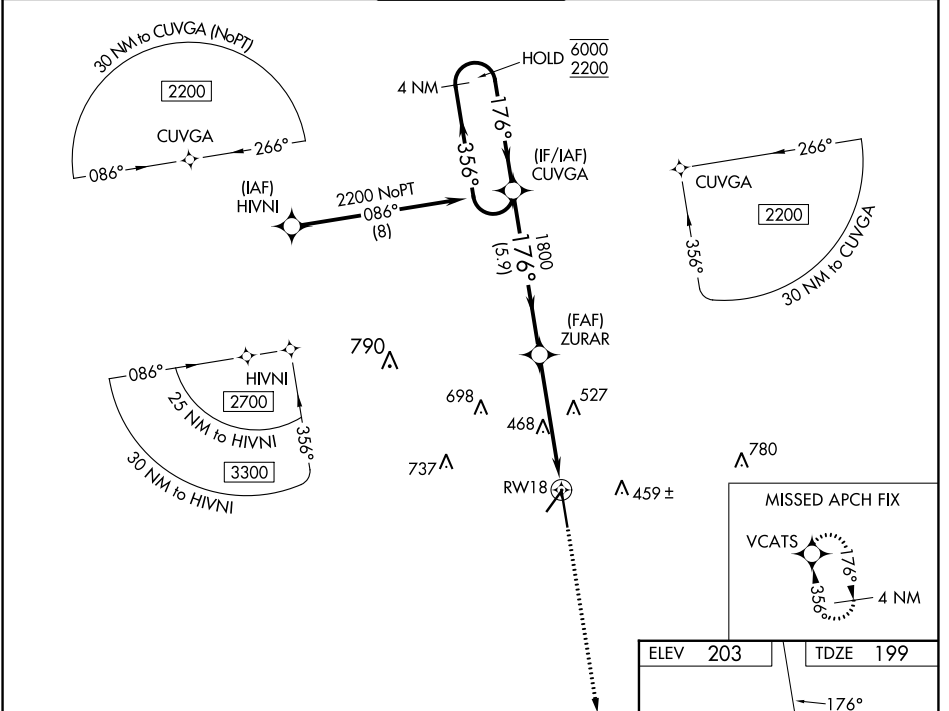
WAAS CH <b>87101</b> <b>W18A</b>	APP CRS <b>176°</b>	Rwy Idg <b>8002</b> TDZE <b>199</b> Apt Elev <b>203</b>
--	------------------------	--

# RNAV (GPS) RWY 18

VALDOSTA RGNL (VLD)

RNP APCH - GPS.		<p><b>▼</b> Rwy 18 helicopter visibility reduction below ¾ SM NA. For uncompensated Baro-VNAV systems, LNAV/VNAV NA below -4°C or above 54°C.</p> <p><b>▲</b> MISSED APPROACH: Climb to 2700 direct VCATS and hold.</p>	
-----------------	--	---	--

ASOS <b>126.225</b>	VALDOSTA APP CON * <b>126.6 285.6</b>	VALDOSTA TOWER * <b>128.35 (CTAF) 0</b>	GND CON <b>121.7</b>	UNICOM <b>122.95</b>
------------------------	--	--	-------------------------	-------------------------



CATEGORY	A	B	C	D
LPV DA		454-¾	255 (300-¾)	
LNAV/VNAV DA		458-¾	259 (300-¾)	
LNAV MDA	720-1	521 (600-1)	720-1½	521 (600-1½)
CIRCLING	720-1	517 (600-1)	900-2 697 (700-2)	1020-2¾ 817 (900-2¾)

SE-4, 22 FEB 2024 to 21 MAR 2024

SE-4, 22 FEB 2024 to 21 MAR 2024


WAAS CH <b>86206</b> <b>W36A</b>	APP CRS <b>356°</b>	Rwy Idg TDZE Apt Elev	<b>8002</b> <b>200</b> <b>203</b>
--	------------------------	-----------------------------	---

# RNAV (GPS) RWY 36

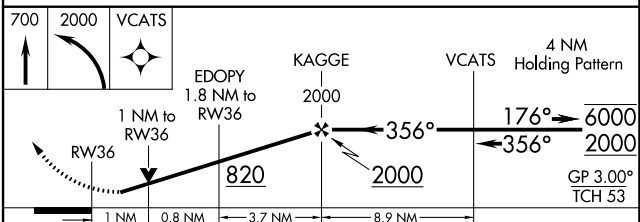
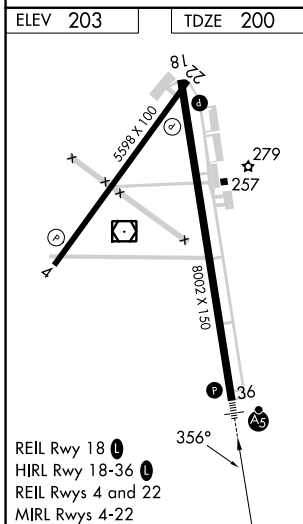
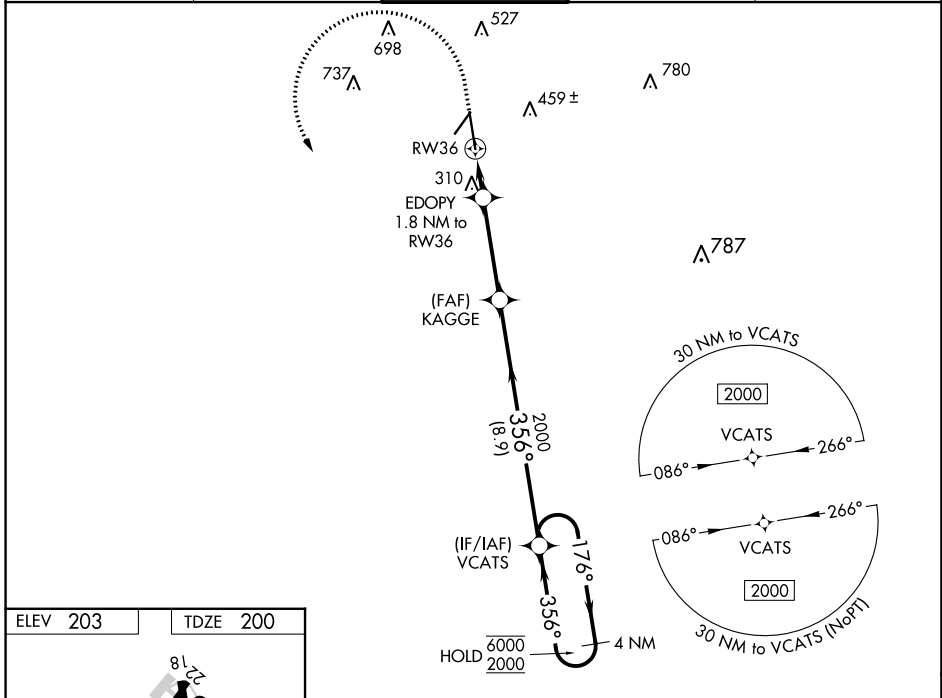
VALDOSTA RGNL (VLD)

RNP APCH - GPS.

⚠ For uncompensated Baro-VNAV systems, LNAV/VNAV NA below -4°C or above 54°C. Rwy 36 helicopter visibility reduction below ¾ SM NA. For inop ALS, increase LPV and LNAV/VNAV all Cats visibility to ¾ SM and LNAV all Cats visibility to 1 SM.

MALSR  MISSED APPROACH: Climb to 700 then climbing left turn to 2000 direct VCATS and hold.

ASOS <b>126.225</b>	VALDOSTA APP CON * <b>126.6 285.6</b>	VALDOSTA TOWER * <b>128.35 (CTAF) 0</b>	GND CON <b>121.7</b>	UNICOM <b>122.95</b>
------------------------	--	--	-------------------------	-------------------------



CATEGORY	A	B	C	D
LPV DA		489-¾	289 (300-¾)	
LNAV/VNAV DA		482-¾	282 (300-¾)	
LNAV MDA		560-¾	360 (400-¾)	
CIRCLING	640-1	700-1	900-2	1020-2¾
	437 (500-1)	497 (500-1)	697 (700-2)	817 (900-2¾)

SE-4, 22 FEB 2024 to 21 MAR 2024

SE-4, 22 FEB 2024 to 21 MAR 2024

APP CRS **041°**  
 Rwy Idg **5598**  
 TDZE **202**  
 Apt Elev **203**

# RNAV (GPS) RWY 4

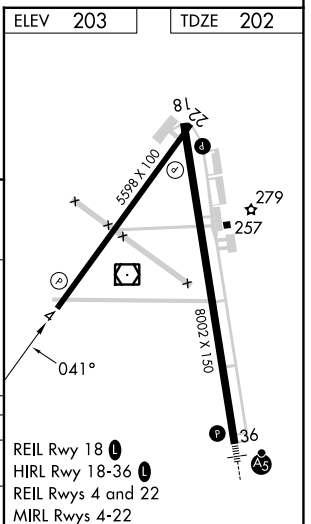
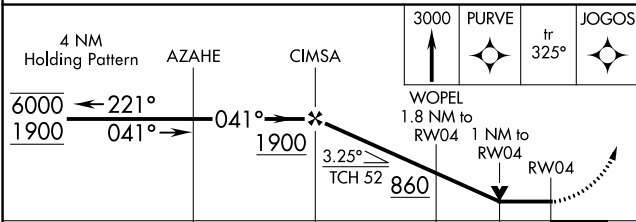
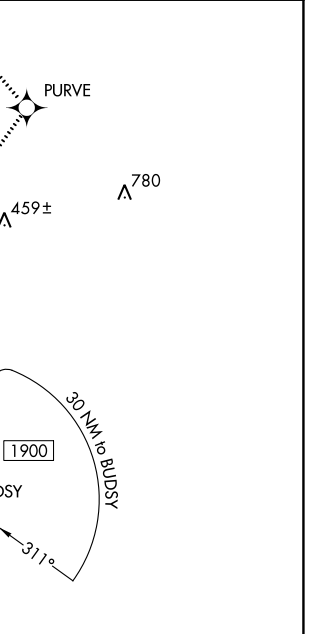
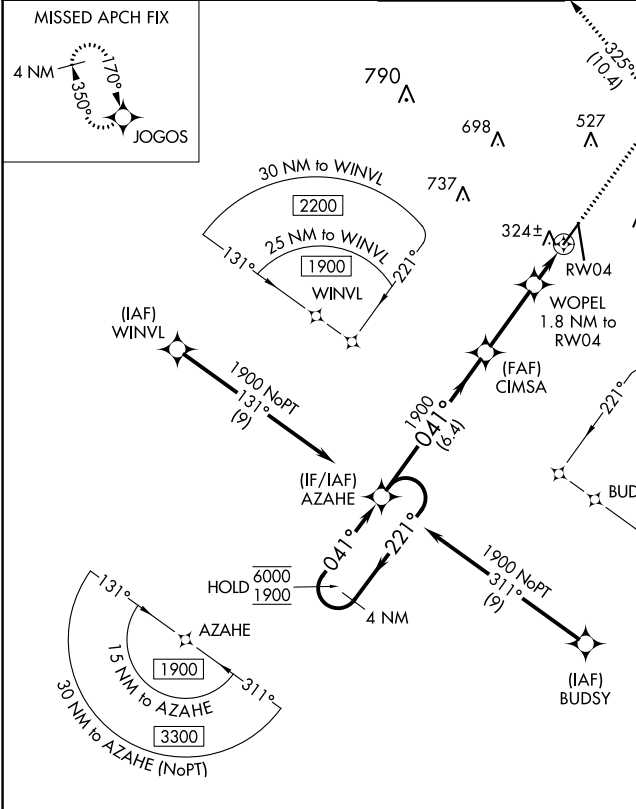
VALDOSTA RGNL (VLD)

RNP APCH - GPS.

▼  
▲ Rwy 4 helicopter visibility reduction below 3/4 SM NA.

MISSED APPROACH: Climb to 3000 direct PURVE and on track 325° to JOGOS and hold.

ASOS <b>126.225</b>	VALDOSTA APP CON * <b>126.6 285.6</b>	VALDOSTA TOWER * <b>128.35 (CTAF) 0</b>	GND CON <b>121.7</b>	UNICOM <b>122.95</b>
------------------------	--	--	-------------------------	-------------------------



CATEGORY	A	B	C	D
LNVA MDA	580-1 378 (400-1)			
CIRCLING	640-1 437 (500-1)	700-1 497 (500-1)	900-2 697 (700-2)	1020-2 3/4 817 (900-2 3/4)

SE-4, 22 FEB 2024 to 21 MAR 2024

SE-4, 22 FEB 2024 to 21 MAR 2024

VOR/DME OTK <b>114.8</b> Chan <b>95</b>	APP CRS <b>190°</b>	Rwy Idg <b>8002</b> TDZE <b>199</b> Apt Elev <b>203</b>
---	------------------------	---

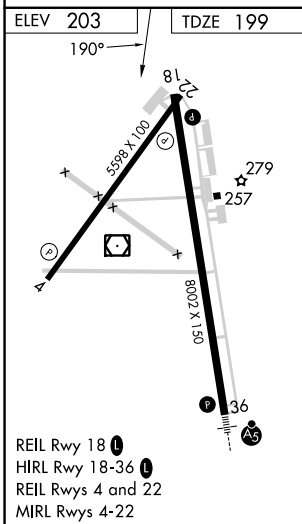
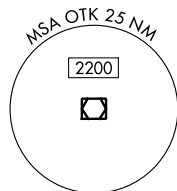
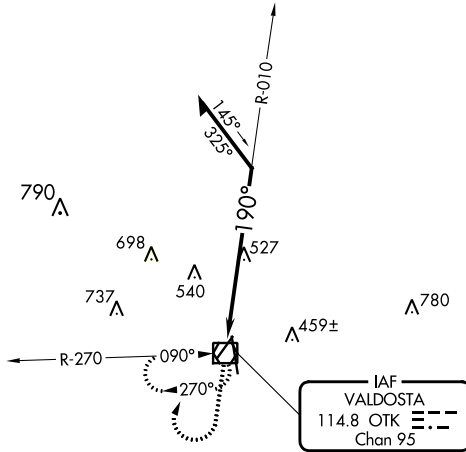
# VOR RWY 18

VALDOSTA RGNL (VLD)

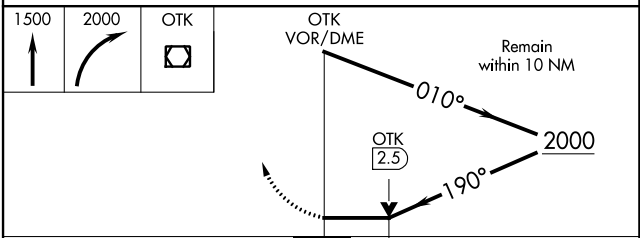
**▽**  
**▲** Rwy 18 helicopter visibility reduction below ¼ SM NA.

MISSED APPROACH: Climb to 1500 then climbing right turn to 2000 direct OTK VOR/DME and hold, continue climb-in-hold to 2000.

ASOS <b>126.225</b>	VALDOSTA APP CON * <b>126.6 285.6</b>	VALDOSTA TOWER * <b>128.35</b> (CTAF) <b>0</b>	GND CON <b>121.7</b>	UNICOM <b>122.95</b>
------------------------	--	---	-------------------------	-------------------------



- REIL Rwy 18 **0**
- HIRL Rwy 18-36 **1**
- REIL Rwy 4 and 22
- MIRL Rwy 4-22



CATEGORY	A	B	C	D
S-18	840-1	641 (700-1)	840-1 7/8 641 (700-1 7/8)	840-2 641 (700-2)
CIRCLING	840-1	637 (700-1)	900-2 697 (700-2)	1020-2 3/4 817 (900-2 3/4)

SE-4, 22 FEB 2024 to 21 MAR 2024


SE-4, 22 FEB 2024 to 21 MAR 2024

VOR/DME OTK <b>114.8</b> Chan <b>95</b>	APP CRS <b>338°</b>	Rwy Idg <b>8002</b> TDZE <b>200</b> Apt Elev <b>203</b>
---	------------------------	---

# VOR RWY 36

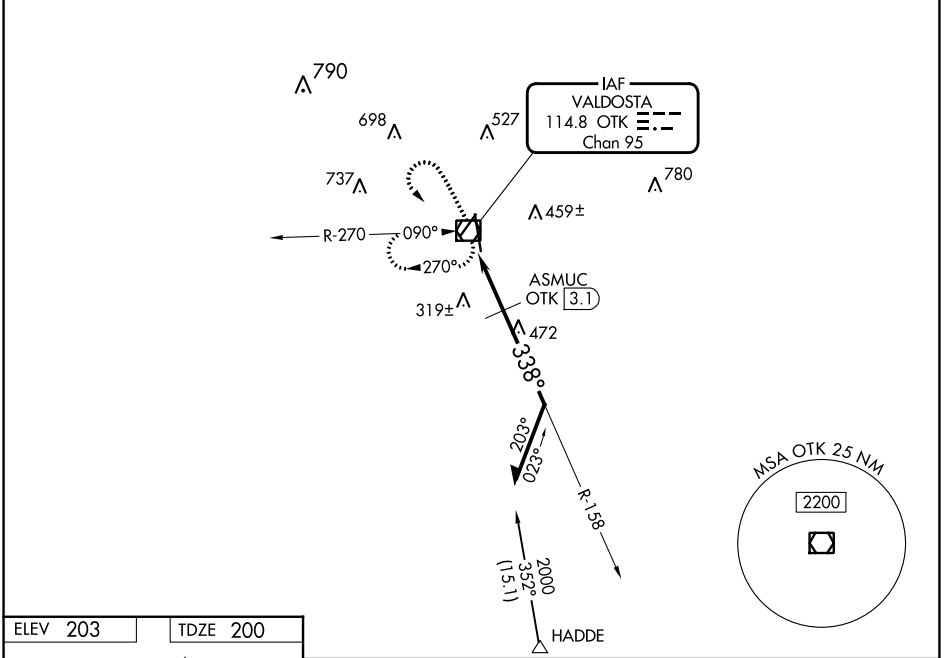
VALDOSTA RGNL (VLD)

**⚠** Rwy 36 helicopter visibility reduction below  $\frac{3}{4}$  SM NA. For inop ALS, increase S-36 Cats A/B visibility to 1 SM and Cats C/D to 1 $\frac{1}{2}$  SM; ASMUC FIX MINIMUMS: increase S-36 all Cats visibility to 1 SM.

**MALSR** 

**MISSED APPROACH:** Climb to 1200 then climbing left turn to 2000 direct OTK VOR/DME and hold, continue climb-in-hold to 2000.

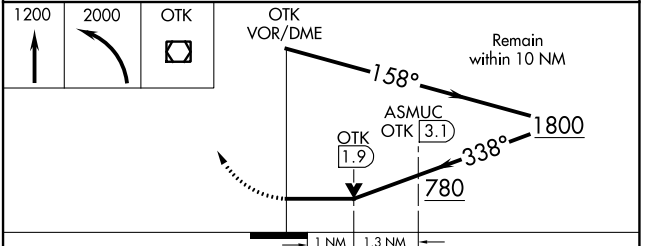
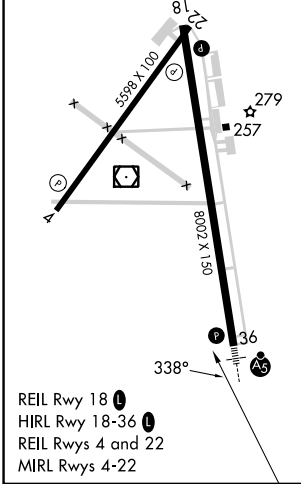
ASOS <b>126.225</b>	VALDOSTA APP CON * <b>126.6 285.6</b>	VALDOSTA TOWER * <b>128.35 (CTAF) 0</b>	GND CON <b>121.7</b>	UNICOM <b>122.95</b>
------------------------	--	--	-------------------------	-------------------------



SE-4, 22 FEB 2024 to 21 MAR 2024

SE-4, 22 FEB 2024 to 21 MAR 2024

ELEV 203	TDZE 200
----------	----------



CATEGORY	A	B	C	D
S-36	780- $\frac{3}{4}$	580 (600- $\frac{3}{4}$ )	780-1 $\frac{1}{4}$	580 (600-1 $\frac{1}{4}$ )
CIRCLING	780-1	577 (600-1)	900-2 697 (700-2)	1020-2 $\frac{3}{4}$ 817 (900-2 $\frac{3}{4}$ )
ASMUC FIX MINIMUMS				
S-36	580- $\frac{3}{4}$		380 (400- $\frac{3}{4}$ )	
CIRCLING	640-1 437 (500-1)	700-1 497 (500-1)	900-2 697 (700-2)	1020-2 $\frac{3}{4}$ 817 (900-2 $\frac{3}{4}$ )