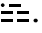
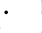
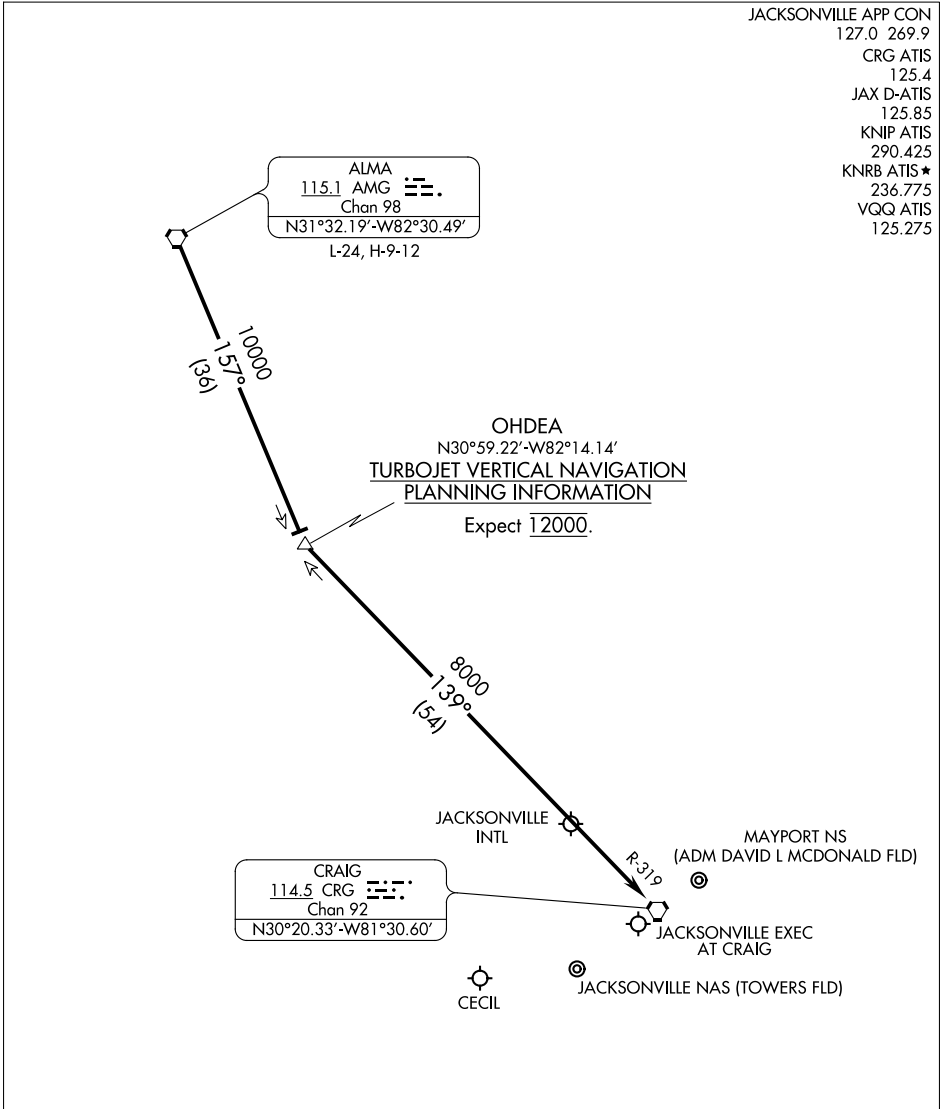


JACKSONVILLE APP CON
 127.0 269.9
 CRG ATIS
 125.4
 JAX D-ATIS
 125.85
 KNIP ATIS
 290.425
 KNRB ATIS*
 236.775
 VQQ ATIS
 125.275

ALMA
 115.1 AMG 
 Chan 98
 N31°32.19'-W82°30.49'
 L-24, H-9-12

OHDEA
 N30°59.22'-W82°14.14'
TURBOJET VERTICAL NAVIGATION
PLANNING INFORMATION
 Expect 12000.

CRAIG
 114.5 CRG 
 Chan 92
 N30°20.33'-W81°30.60'



SE-3, 11 AUG 2022 to 08 SEP 2022

SE-3, 11 AUG 2022 to 08 SEP 2022

NOTE: DME required.

NOTE: Chart not to scale.

ARRIVAL DESCRIPTION

From over ALMA VORTAC via AMG R-157 to OHDEA INT, then via CRG R-319 to CRG VORTAC. Expect radar vectors to final approach course.

HOTAR ONE ARRIVAL (RNAV)

JACKSONVILLE, FLORIDA

JACKSONVILLE APP CON
 119.0 127.0 269.9 292.15 (270°-090°)
 127.775 377.075 (181°-269°)
 124.9 308.4 (091°-180°)
 CRG ATIS 125.4
 JAX D-ATIS 125.85
 KNIP ATIS 290.425
 KNRB ATIS * 236.775
 SGJ ATIS 119.625
 VQQ ATIS 125.275

ARRIVAL ROUTE DESCRIPTION

BASLE TRANSITION (BASLE.HOTAR1)

From JABOR on track 191° to HOTAR.

LANDING JAX: From HOTAR on track 263° to YEJWO.

Expect radar vectors to an ILS or LOC final approach course.

LANDING NRB and CRG: From HOTAR on track 210° to LESVE, then on 213° heading or as assigned by ATC.

Expect radar vectors to final approach course.

LANDING SGJ: From HOTAR on track 202° to HABIK, then on 203° heading or as assigned by ATC. Expect radar vectors to final approach course.

LANDING VQQ and NIP: From HOTAR on track 202° to HEBIN, then on 253° heading or as assigned by ATC. Expect radar vectors to final approach course.

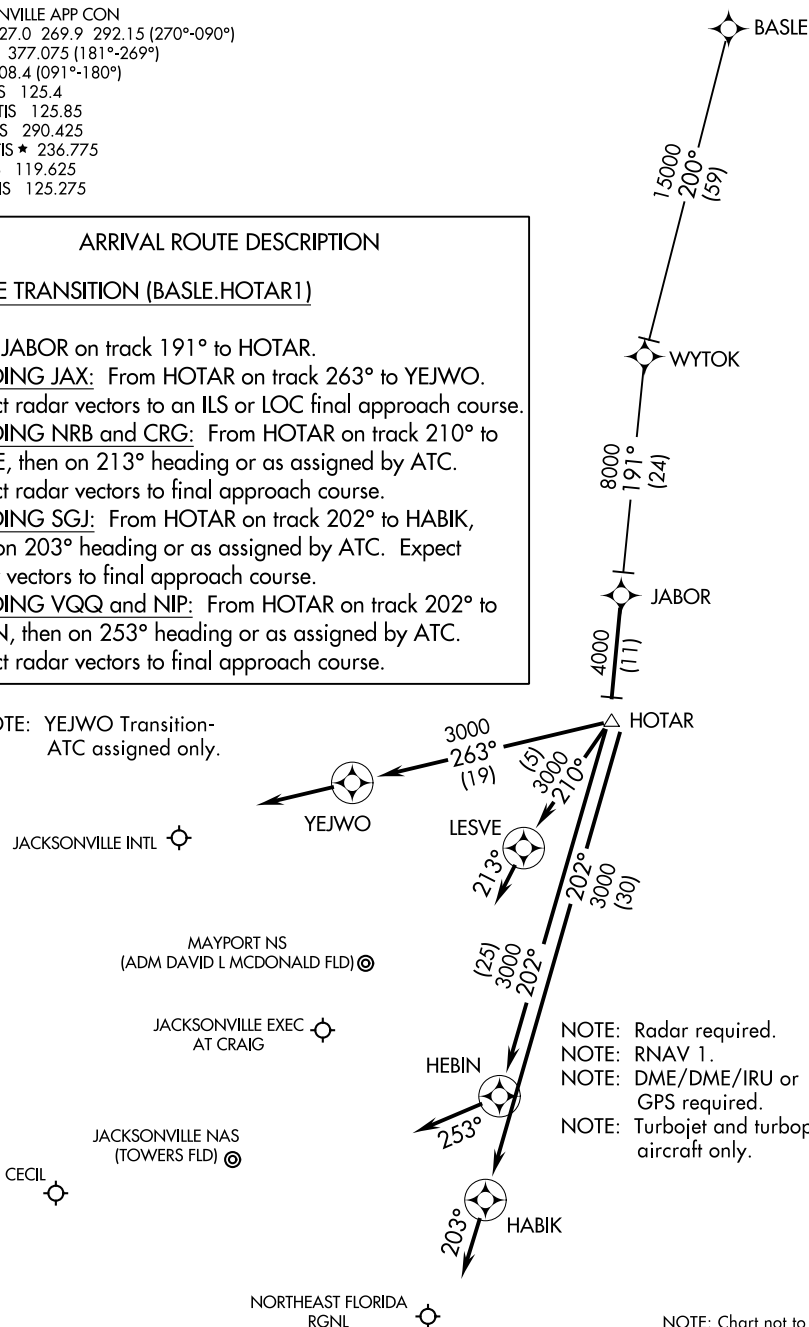
NOTE: YEJWO Transition-ATC assigned only.

NOTE: Radar required.
 NOTE: RNAV 1.
 NOTE: DME/DME/IRU or GPS required.
 NOTE: Turbojet and turboprop aircraft only.

NOTE: Chart not to scale.

SE-3, 11 AUG 2022 to 08 SEP 2022

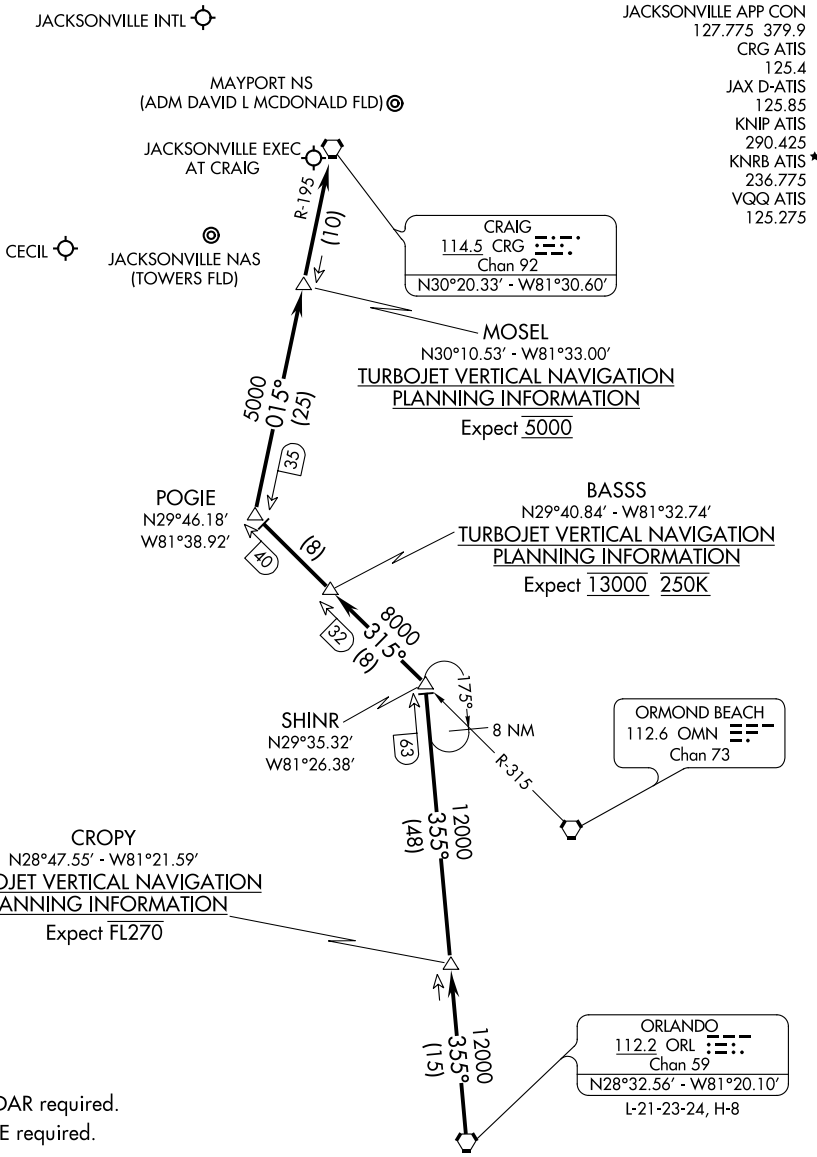
SE-3, 11 AUG 2022 to 08 SEP 2022



HOTAR ONE ARRIVAL (RNAV)

(HOTAR.HOTAR1) 17OCT13

JACKSONVILLE, FLORIDA



JACKSONVILLE APP CON
127.775 379.9
CRG ATIS
125.4
JAX D-ATIS
125.85
KNIP ATIS
290.425
KNRB ATIS
236.775
VQG ATIS
125.275

CRAIG
114.5 CRG
Chan 92
N30°20.33' - W81°30.60'

MOSEL
N30°10.53' - W81°33.00'
TURBOJET VERTICAL NAVIGATION
PLANNING INFORMATION
Expect 5000

BASS
N29°40.84' - W81°32.74'
TURBOJET VERTICAL NAVIGATION
PLANNING INFORMATION
Expect 13000 250K

CROPY
N28°47.55' - W81°21.59'
TURBOJET VERTICAL NAVIGATION
PLANNING INFORMATION
Expect FL270

ORMOND BEACH
112.6 OMN
Chan 73

ORLANDO
112.2 ORL
Chan 59
N28°32.56' - W81°20.10'
L-21-23-24, H-8

NOTE: RADAR required.
NOTE: DME required.
NOTE: Chart not to scale.

ARRIVAL ROUTE DESCRIPTION

From over ORL VORTAC on ORL R-355 to SHINR, then on OMN R-315 to POGIE, then on CRG R-195 to CRG VORTAC. Expect RADAR vectors to final approach course after CRG VORTAC.

SE-3, 11 AUG 2022 to 08 SEP 2022

SE-3, 11 AUG 2022 to 08 SEP 2022