

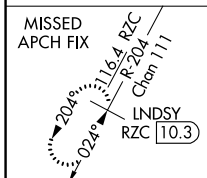
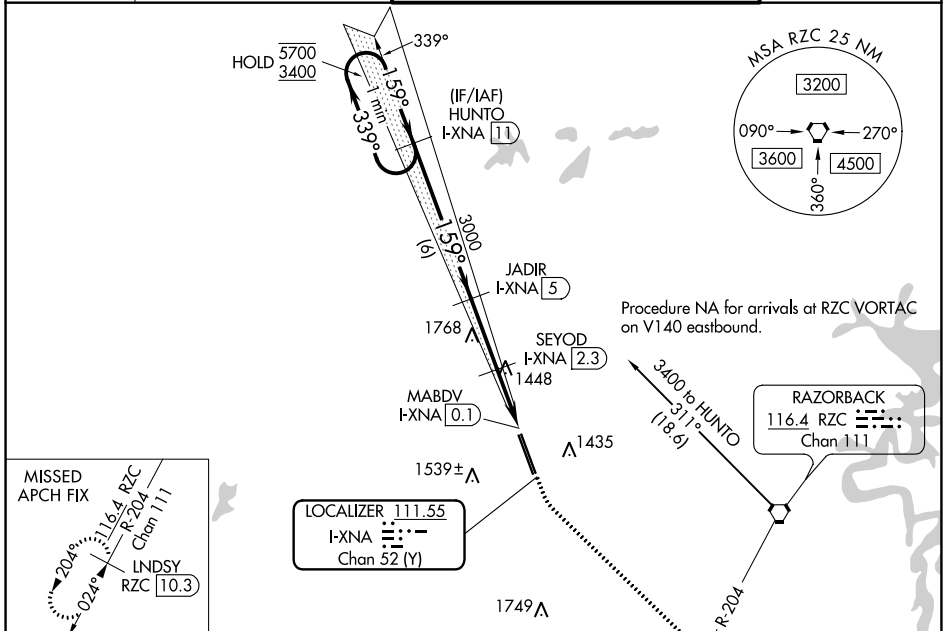
LOC/DME I-XNA 111.55 Chan 52 (Y)	APP CRS 159°	Rwy ldg TDZE 8800 1287 Apt Elev 1288
---	------------------------	--

ILS or LOC RWY 16L

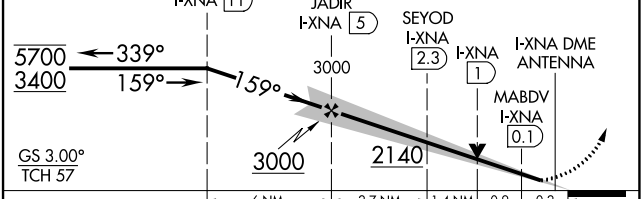
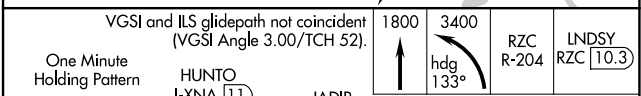
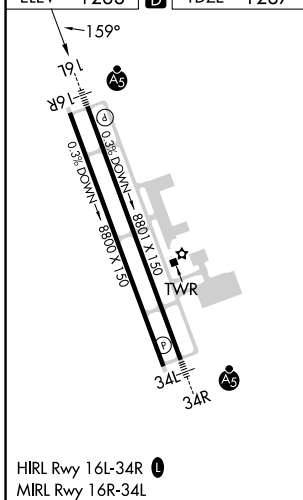
NORTHWEST ARKANSAS NTL (XNA)

DME required.	MALSR	MISSED APPROACH: Climb to 1800 then climbing left turn to 3400 on heading 133° and RZC VORTAC R-204 to LNSDY/RZC 10.3 DME and hold.
<p>▼ For inop ALS, increase S-ILS 16L Cat E visibility to RVR 4000 and S-LOC 16L Cats C, D, and E visibility to RVR 6000.</p> <p>▲ * RVR 1800 authorized with use of FD or AP or HUD to DA.</p>		

ATIS 119.425	RAZORBACK APP CON * 121.0 244.575	NORTHWEST ARKANSAS NTL TOWER * 127.1 (CTAF) 0	GND CON 121.9
------------------------	---	---	-------------------------



ELEV 1288	D	TDZE 1287
-----------	---	-----------



CATEGORY	A	B	C	D	E
S-ILS 16L*	1487/24 200 (200-½)				
S-LOC 16L	1700/24 413 (500-½)	1700/40 413 (500-¾)			
CIRCLING	1740-1 452 (500-1)	1760-1 472 (500-1)	2040-2¼ 752 (800-2¼)	2080-2½ 792 (800-2½)	2080-2¾ 792 (800-2¾)

SC-1, 22 FEB 2024 to 21 MAR 2024

SC-1, 22 FEB 2024 to 21 MAR 2024

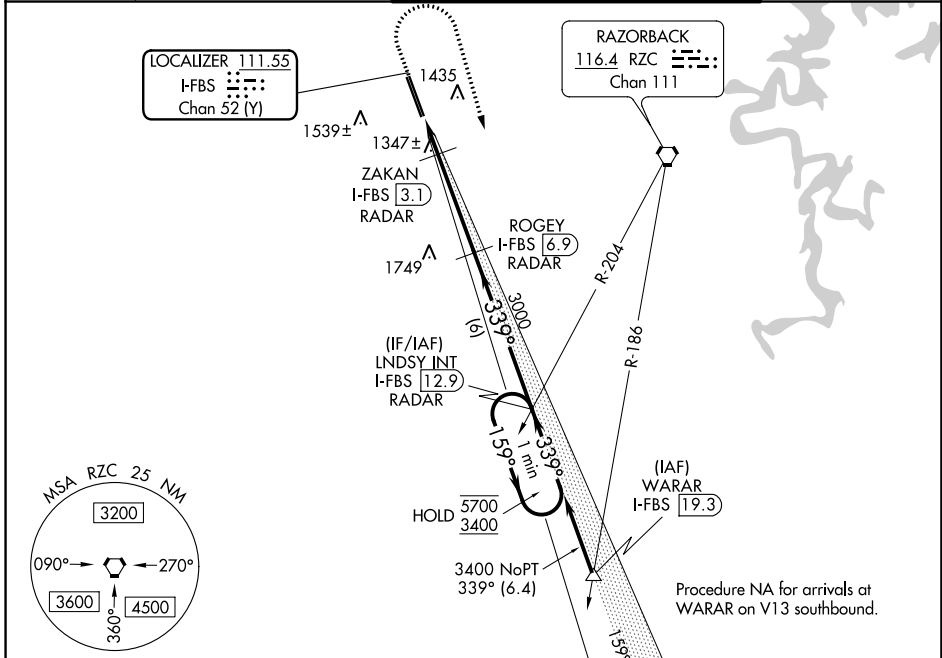
LOC/DME I-FBS 111.55 Chan 52(Y)	APP CRS 339°	Rwy Idg 8800 TDZE 1273 Apt Elev 1288
---	------------------------	---

ILS or LOC RWY 34R

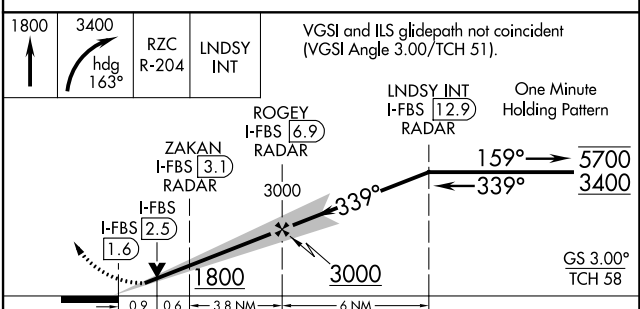
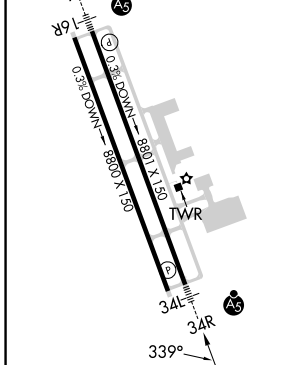
NORTHWEST ARKANSAS NTL (X.N.A)

DME or RADAR required for LOC only.	MALSR	MISSED APPROACH: Climb to 1800 then climbing right turn to 3400 on heading 163° and RZC VORTAC R-204 to LNDYSY INT/I-FBS 12.9 DME/RADAR and hold.
<p>▼ For inop ALS, increase S-ILS 34R Cat E visibility to RVR 4000 and S-LOC 34R Cat E visibility to RVR 5000.</p> <p>▲ *RVR 1800 authorized with use of FD or AP or HUD to DA.</p>		

ATIS 119.425	RAZORBACK APP CON* 121.0 244.575	NORTHWEST ARKANSAS NTL TOWER * 127.1 (CTAF) 0	GND CON 121.9
------------------------	--	---	-------------------------



ELEV 1288	D TDZE 1273
HIRL Rwy 16L-34R	
MIRL Rwy 16R-34L	



CATEGORY	A	B	C	D	E
S-ILS 34R*	1473/24 200 (200-1/2)				
S-LOC 34R	1600/24	327 (400-1/2)	1600/26	327 (400-1/2)	
CIRCLING	1740-1 452 (500-1)	1760-1 472 (500-1)	2040-2 1/4 752 (800-2 1/4)	2080-2 1/2 792 (800-2 1/2)	2080-2 3/4 792 (800-2 3/4)

SC-1, 22 FEB 2024 to 21 MAR 2024

SC-1, 22 FEB 2024 to 21 MAR 2024

WAAS CH 56246 W16A	APP CRS 159°	Rwy Idg TDZE 1287 Apt Elev 1288	8800 1287 1288
--	------------------------	---	---

RNAV (GPS) RWY 16L

NORTHWEST ARKANSAS NTL (XNA)

RNP APCH - GPS.

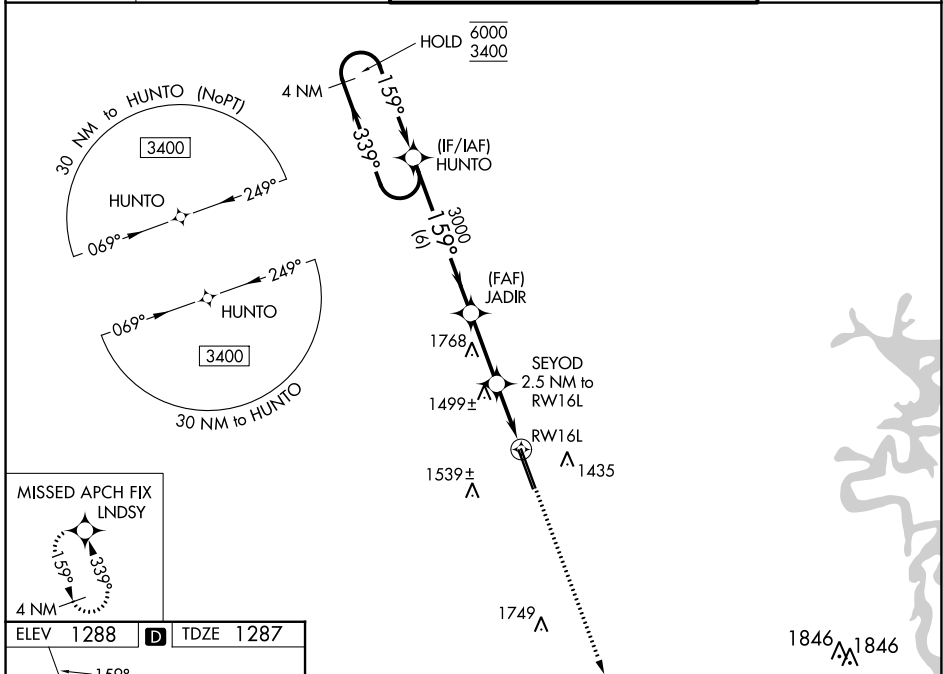
⚠ For uncompensated Baro-VNAV systems, LNAV/VNAV NA below -15°C or above 54°C. For inop ALS, increase LPV Cat E visibility to RVR 4000, LNAV/VNAV Cat E visibility to 1¼ SM and LNAV Cats C, D, and E visibility to 1¾ SM. *RVR 1800 authorized with use of FD or AP or HUD to DA.

MALSRL



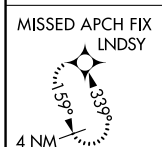
MISSED APPROACH:
Climb to 3400 direct
LNDYSY and hold.

ATIS 119.425	RAZORBACK APP CON * 121.0 244.575	NORTHWEST ARKANSAS NTL TOWER * 127.1 (CTAF) 0	GND CON 121.9
------------------------	---	---	-------------------------

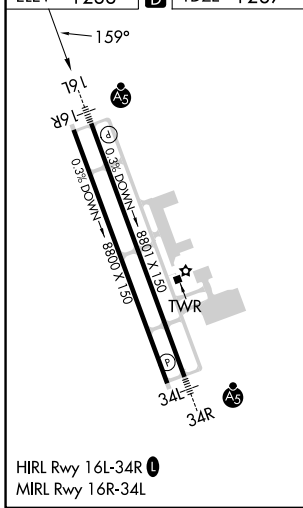


SC-1, 22 FEB 2024 to 21 MAR 2024

SC-1, 22 FEB 2024 to 21 MAR 2024



ELEV 1288	D	TDZE 1287
-----------	----------	-----------




4 NM Holding Pattern		VGSi and RNAV glidepath not coincident (VGSi Angle 3.00/TCH 52).			3400	LNDYSY
6000 ← 339°		→ 159°		3000	JADIR	SEYOD 2.5 NM to RWY 16L
GP 3.00° TCH 57		3000		2140	1.3 NM to RWY 16L	1.3
		6 NM		2.7 NM	1.2	1.3
CATEGORY	A	B	C	D	E	
LPV DA*	1487/24		200 (200-½)			
LNAV/VNAV DA	1710/40		423 (500-¾)			
LNAV MDA	1760/24	473 (500-½)		1760/50		473 (500-1)
CIRCLING	1760-1	472 (500-1)		2040-2¼ 752 (800-2¼)	2080-2½ 792 (800-2½)	2080-2¾ 792 (800-2¾)

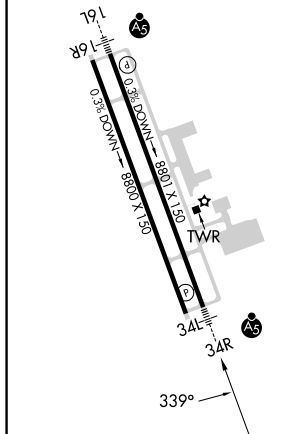
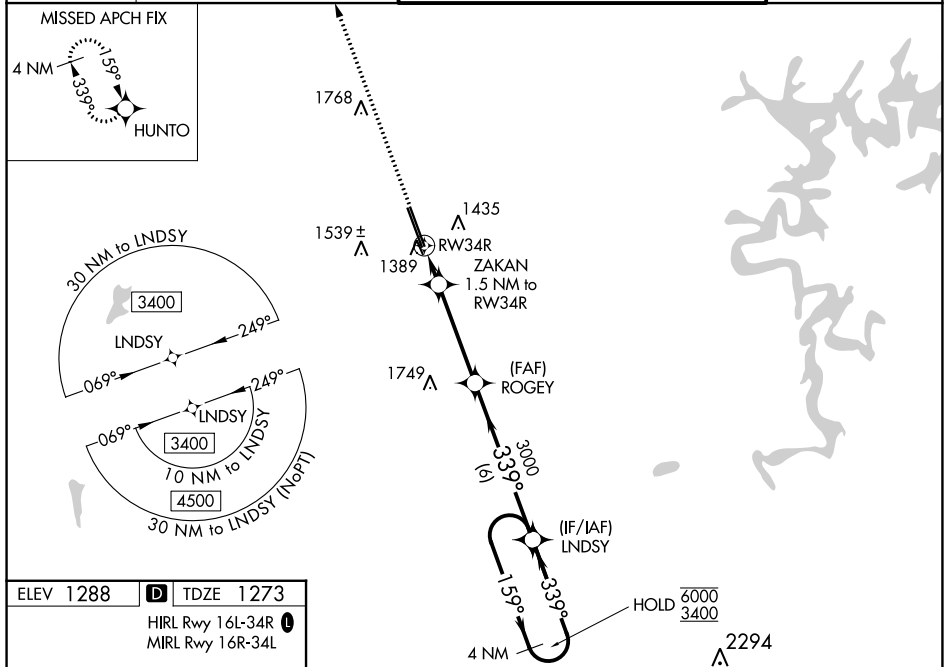
WAAS CH 97346 W34A	APP CRS 339°	Rwy Idg TDZE 1273 Apt Elev 1288
--	------------------------	---

RNAV (GPS) RWY 34R

NORTHWEST ARKANSAS NTL (X.N.A)

RNP APCH - GPS.	MALSR 	MISSED APPROACH: Climb to 3400 direct HUNTO and hold
<p>⚠ For uncompensated Baro-VNAV systems, LNAV/VNAV NA below -1.5°C or above 54°C. For inop ALS, increase LPV Cat E visibility to RVR 4000, LNAV/VNAV all Cats visibility to RVR 4500 and LNAV Cats C, D, and E visibility to RVR 5500. * RVR 1800 authorized with use of FD or AP or HUD to DA.</p>		

ATIS 119.425	RAZORBACK APP CON * 121.0 244.575	NORTHWEST ARKANSAS NTL TOWER * 127.1 (CTAF) 0	GND CON 121.9
------------------------	---	---	-------------------------



3400	HUNTO	VGSi and RNAV glidepath not coincident (VGSi Angle 3.00/TCH 51).			
4 NM	Holding Pattern	LND SY	159°	6000	3400
ZAKAN	ROGEY	LND SY	339°	3000	GP 3.00° TCH 58
1.5 NM to RW34R	3000				
RW34R	1800				
1.5 NM	3.8 NM	6 NM			

CATEGORY	A	B	C	D	E
LPV DA *		1473/24	200 (200-½)		
LNAV/VNAV DA		1550/24	277 (300-½)		
LNAV MDA	1640/24	367 (400-½)	1640/35	367 (400-¾)	
CIRCLING	1740-1 452 (500-1)	1760-1 472 (500-1)	2040-2¼ 752 (800-2¼)	2080-2½ 792 (800-2½)	2080-2¾ 792 (800-2¾)

SC-1, 22 FEB 2024 to 21 MAR 2024

SC-1, 22 FEB 2024 to 21 MAR 2024