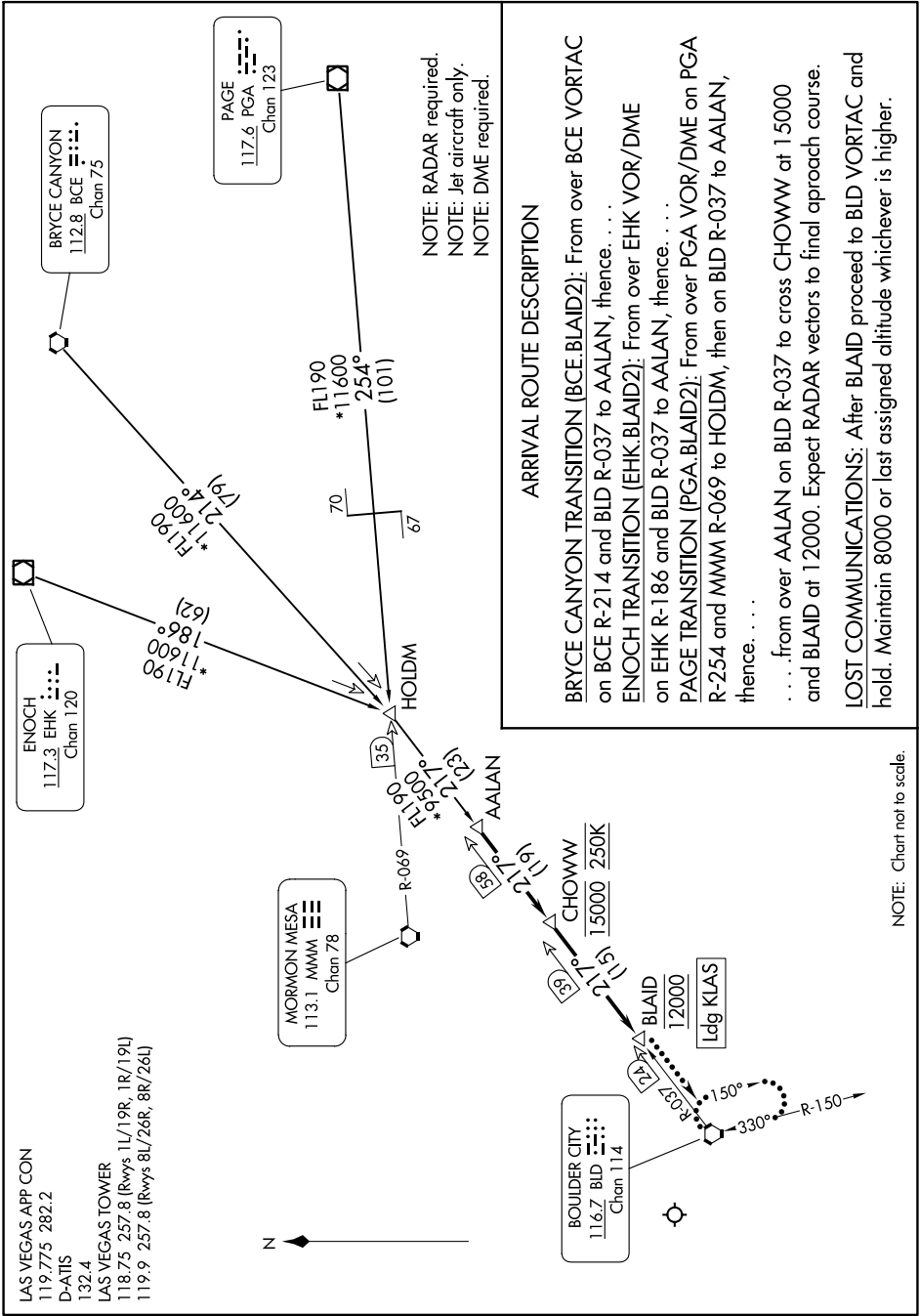


# BLAID TWO ARRIVAL

AL-662 (FAA)

HARRY REID INTL (LAS)  
LAS VEGAS, NEVADA

SW-4, 22 FEB 2024 to 21 MAR 2024



### ARRIVAL ROUTE DESCRIPTION

**BRYCE CANYON TRANSITION (BCE:BLAID2):** From over BCE VORTAC on BCE R-214 and BLD R-037 to AALAN, thence. . . .

**ENOCH TRANSITION (EHK:BLAID2):** From over EHK VOR/DME on EHK R-186 and BLD R-037 to AALAN, thence. . . .

**PAGE TRANSITION (PGA:BLAID2):** From over PGA VOR/DME on PGA R-254 and MMM R-069 to HOLDIM, then on BLD R-037 to AALAN, thence. . . .

. . . .from over AALAN on BLD R-037 to cross CHOWWW at 15000 and BLAID at 12000. Expect RADAR vectors to final approach course.

**LOST COMMUNICATIONS:** After BLAID proceed to BLD VORTAC and hold. Maintain 8000 or last assigned altitude whichever is higher.

NOTE: RADAR required.  
NOTE: Jet aircraft only.  
NOTE: DME required.

NOTE: Chart not to scale.

SW-4, 22 FEB 2024 to 21 MAR 2024