

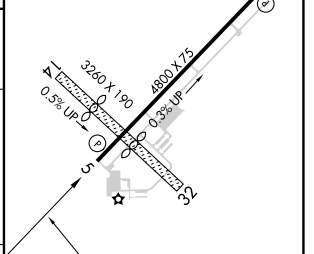
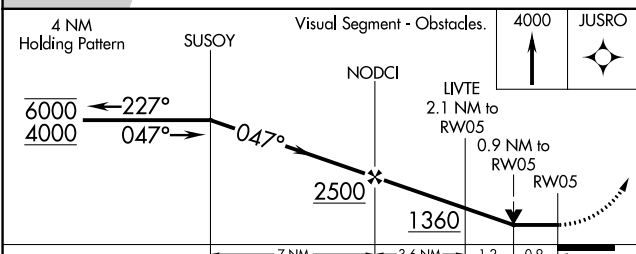
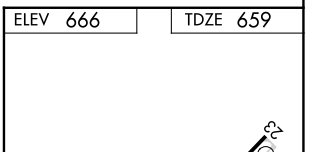
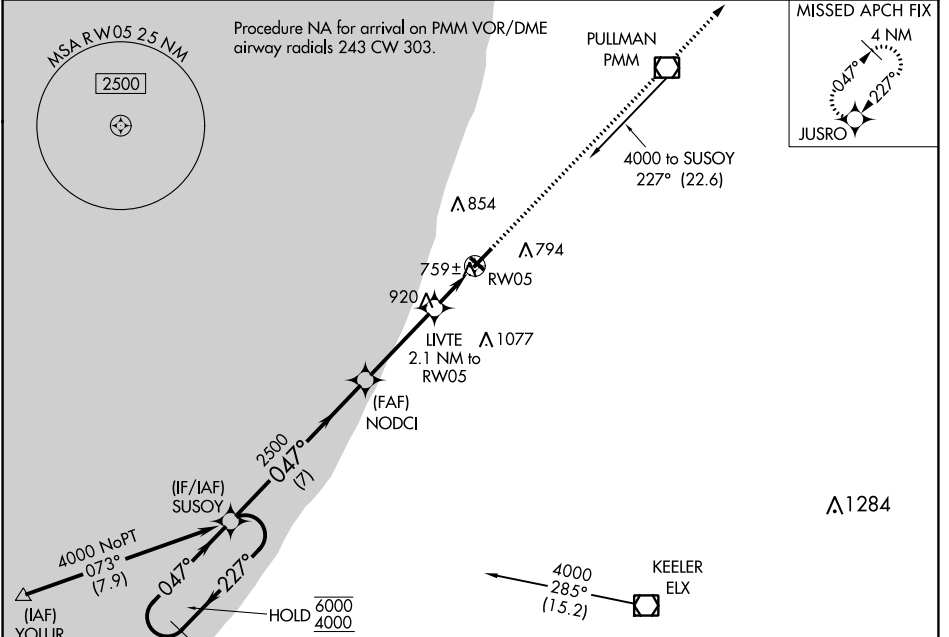
APP CRS	Rwy Idg	4800
047°	TDZE	659
	Apt Elev	666

RNAV (GPS) RWY 5

SOUTH HAVEN AREA RGNL (LWA)

RNP APCH.	MISSED APPROACH: Climb to 4000 direct JUSRO and hold, continue climb-in-hold to 4000.
▼ Circling NA to Rwys 14 and 32.	
▲ Rwy 5 helicopter visibility reduction below 3/4 SM NA.	

AWOS-3 118.025	SOUTH BEND APP CON* 118.55 257.8	UNICOM 122.8 (CTAF) 0
--------------------------	--	---------------------------------



CATEGORY	A	B	C	D
LNAV MDA	1020-1		361 (400-1)	
CIRCLING	1120-1 454 (500-1)	1140-1 474 (500-1)	1440-2 1/4 774 (800-2 1/4)	1440-2 1/2 774 (800-2 1/2)

ELEV	666	TDZE	659
REIL Rwys 5 and 23 0			
MIRL Rwy 5-23 0			

EC-1, 22 FEB 2024 to 21 MAR 2024

EC-1, 22 FEB 2024 to 21 MAR 2024