

APP CRS 214°	Rwy Idg TDZE Apt Elev	2812 538 538
------------------------	-----------------------------	---

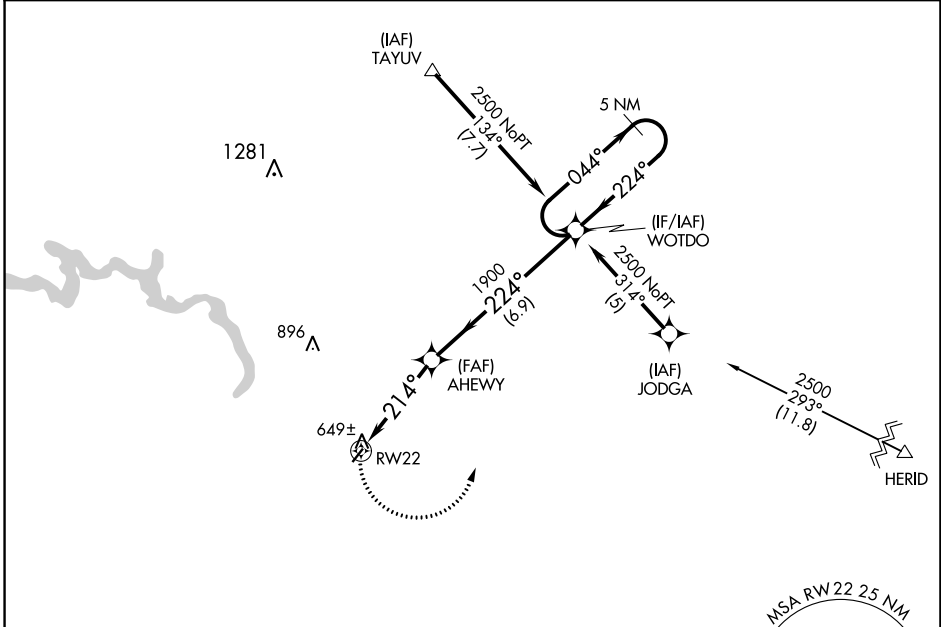
RNAV (GPS) RWY 22

MALVERN MUNI (M78)

⚠ DME/DME RNP-0.3 NA. Use Hot Springs altimeter setting; when not received, use Bill and Hillary Clinton Ntl/Adams Fld altimeter setting and increase all MDAs 80 feet. **⚠** NA Helicopter visibility reduction below 1 SM NA. Procedure NA at night.

MISSED APPROACH: Climbing left turn to 2500 direct WOTDO and hold.

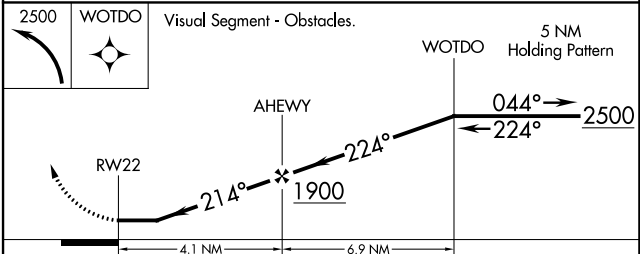
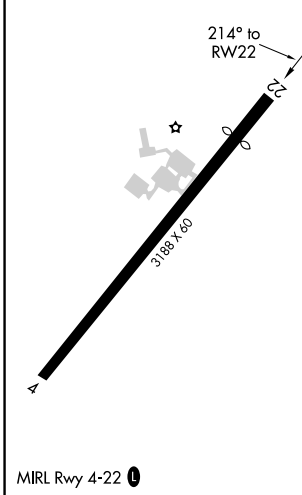
MEMPHIS CENTER 128.475 377.15	UNICOM 122.8 (CTAF) 0
---	---------------------------------



SC-1, 22 FEB 2024 to 21 MAR 2024

SC-1, 22 FEB 2024 to 21 MAR 2024

ELEV 538	TDZE 538
----------	----------



CATEGORY	A	B	C	D
LNAV MDA	960-1	422 (500-1)	NA	
CIRCLING	1000-1 462 (500-1)	1080-1 542 (600-1)	NA	