

MARIETTA, GEORGIA

RNAV (GPS) RWY 11

APCH CRS	Rwy Idg	10,002
109°	TDZE	1069
	Arprt Elev	1069

AL-959 (USAF)

DOBBINS ARB (KMGE)

RNP APCH. DME/DME RNP-0.3 NA.

ALSIF-1

MISSED APPROACH: Climb to 2000 then climbing left turn to 3000 direct BATLL and hold.

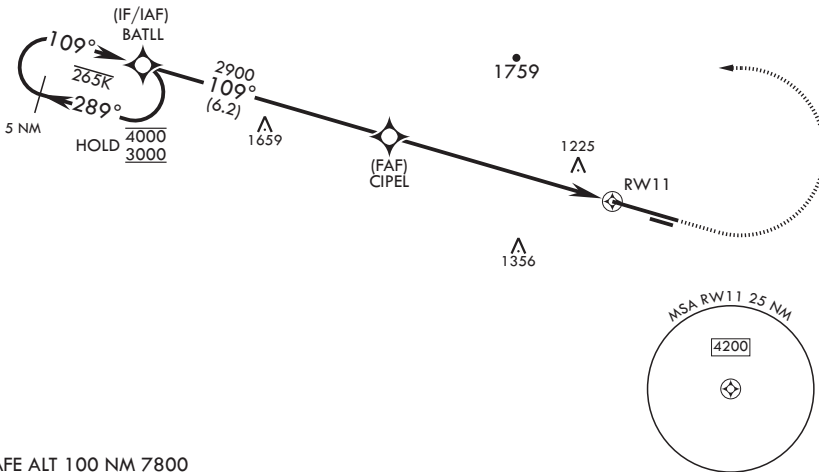
* When ALS inop, increase vis to 1 3/8 miles.
** When ALS inop, increase CAT AB RVR to 55 and vis to 1 mile, CAT CDE vis to 1 1/2 miles.



ATIS★	ATLANTA APP CON/DEP CON	TOWER★	GND CON	ASR
269.5	121.0 268.7	120.75 370.875	125.3 275.8	

*** Circling NA N of Rwy 11-29 for CAT DE aircraft. Circling to assault strip not authorized.

LNAV/VNAV NA below -17°C or above 54°C.



EMERG SAFE ALT 100 NM 7800

<p>4000 3000</p> <p>← 289°</p> <p>109° →</p> <p>3000</p> <p>BATLL</p> <p>GP 3.00° TCH 58</p>	<p>2000</p> <p>3000</p> <p>crs 109°</p> <p>BATLL</p>	ELEV 1069	TDZE 1069
<p>109°</p> <p>CIPEL</p> <p>2900</p> <p>1.5 NM to RWY 11</p> <p>RWY 11</p> <p>5.6 NM</p>	<p>109° to RWY 11</p> <p>0.8% DOWN</p> <p>BCN TWR</p> <p>10,002 x 300</p> <p>110°</p> <p>3495 x 60</p> <p>0.8% DOWN</p> <p>290°</p> <p>ASSAULT STRIP</p>		

CATEGORY	A	B	C	D	E
LNAV/VNAV DA*	1568/50		499	(500-1)	
LNAV MDA**	1600/40 531 (600-¾)		1600/55	531	(600-1)
CIRCLING***	1600-1 531 (600-1)	1620-1 551 (600-1)	1720-1¾ 651 (700-1¾)	1720-2 651 (700-2)	1720-2¼ 651 (700-2¼)

HIRL all Rwys
REIL Rwys 11, 29

MARIETTA, GEORGIA

33°55'N - 84°31'W

DOBBINS ARB (KMGE)

Amdt 2 19MAY22

RNAV (GPS) RWY 11

SE-4, 22 FEB 2024 to 21 MAR 2024

SE-4, 22 FEB 2024 to 21 MAR 2024