

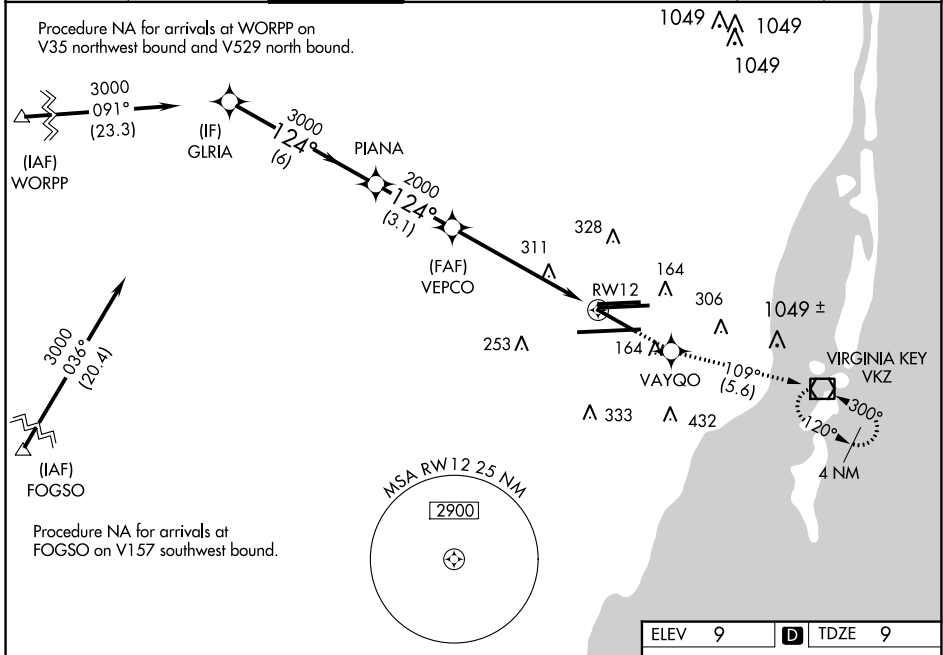
WAAS CH 61204 W12A	APP CRS 124°	Rwy Idg TDZE Apt Elev	8579 9 9
--	------------------------	-----------------------------	-------------------------------------

RNAV (GPS) Z RWY 12

MIAMI INTL (MIA)

RNP APCH - GPS.		MALSR	MISSED APPROACH: Climb to 3000 direct VAYGO and on 109° track to VKZ VOR/DME and hold, continue climb-in-hold to 3000.
<p>▼ Rwy 12 helicopter visibility reduction below ¾ SM NA. For uncompensated Baro-VNAV systems, LNAV/VNAV NA below 9°C or above 54°C. For inop ALS, increase LPV all Cats visibility to RVR 6000, LNAV/VNAV all Cats to 1½ and LNAV Cat A/B to 5500.</p>			

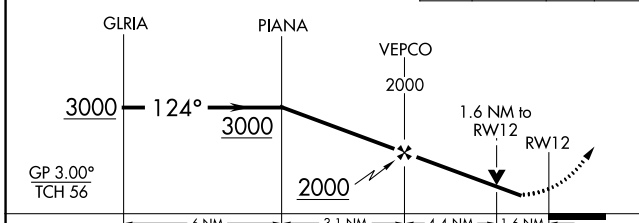
D-ATIS ARR 119.15 DEP 133.675	MIAMI APP CON 124.85 322.3	MIAMI TOWER 118.3 256.9	GND CON 121.8 (8L/8R/12/26L/26R) 127.5 (9/27/30)	348.6	CLNC DEL 135.35	CPDLC
---	--------------------------------------	-----------------------------------	--	--------------	---------------------------	-------



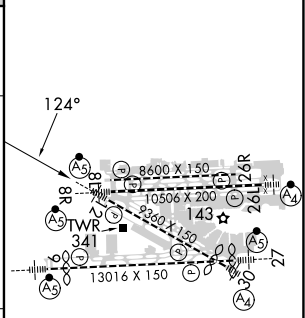
SE-3, 22 FEB 2024 to 21 MAR 2024

SE-3, 22 FEB 2024 to 21 MAR 2024

VGSI and RNAV glidepath not coincident (VGSI Angle 3.00/TCH 72).	3000	VAYGO	tr 109°	VKZ



ELEV 9	TDZE 9
--------	--------



CATEGORY	A	B	C	D
LPV DA		391/40	382 (400-¾)	
LNAV/VNAV DA		512/55	503 (600-1)	
LNAV MDA	600/40	591 (600-¾)	600-1¼	591 (600-1¼)

TDZ/CL Rwy 8R
REIL Rws 8L and 26R
HIRL all Rws