

WAAS CH <b>69410</b> <b>W14A</b>	APP CRS <b>141°</b>	Rwy Idg TDZE Apt Elev	<b>6100</b> <b>627</b> <b>629</b>
--	------------------------	-----------------------------	---

# RNAV (GPS) RWY 14

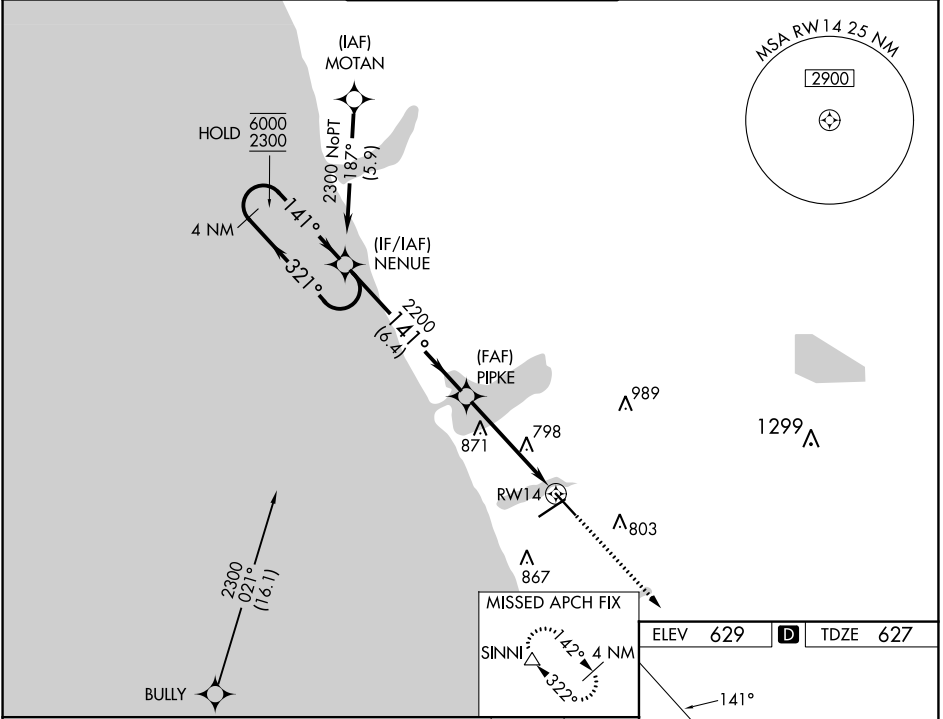
MUSKEGON COUNTY (MKG)

RNP APCH.

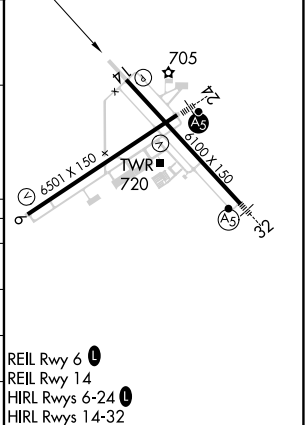
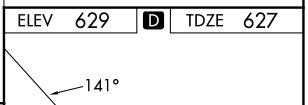
**▼** For uncompensated Baro-VNAV systems, LNAV/VNAV NA below -18°C or above 54°C.

**MISSED APPROACH:**  
Climb to 2700 direct SINNI and hold.

ATIS <b>124.3</b>	GREAT LAKES APP CON ★ <b>119.8 290.35</b> (North) <b>133.825 290.35</b> (South)	MUSKEGON TOWER ★ <b>126.25</b> (CTAF) <b>0 343.725</b>	GND CON <b>121.6</b>	UNICOM <b>122.95</b>
----------------------	---	---	-------------------------	-------------------------



4 NM Holding Pattern		NENUE		PIPKE		SINNI	
6000 2300		← 321° 141° →		2200		2700	
GP 3.00° TCH 45		141°		* 1.6 NM to RWY 14		* LNAV only	
		6.4 NM		3.1 NM		1.6 NM	
CATEGORY	A	B	C	D			
LPV DA		877-¾	250 (300-¾)				
LNAV/VNAV DA		1079-1½	452 (500-1½)				
LNAV MDA	1180-1	553 (600-1)	1180-1½ 553 (600-1½)	1180-1¾ 553 (600-1¾)			
<b>C</b> CIRCLING	1180-1	551 (600-1)	1200-1½ 571 (600-1½)	1200-2 571 (600-2)			



EC-1, 22 FEB 2024 to 21 MAR 2024

EC-1, 22 FEB 2024 to 21 MAR 2024