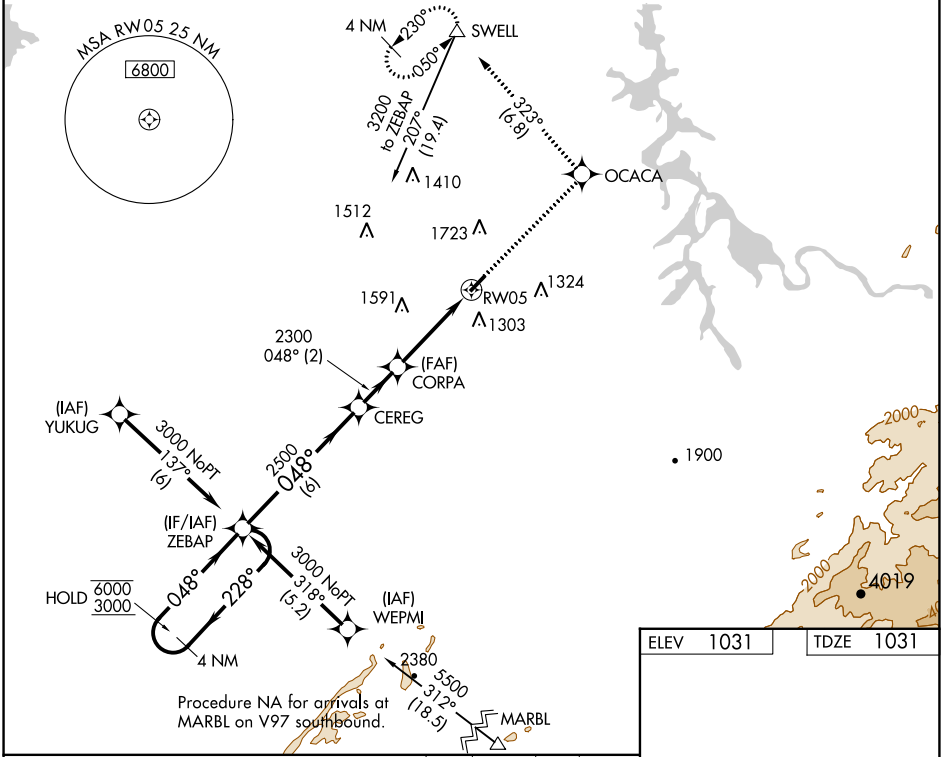


WAAS CH <b>99531</b> <b>W05A</b>	APP CRS <b>048°</b>	Rwy Idg TDZE Apt Elev	<b>3643</b> <b>1031</b> <b>1031</b>
--	------------------------	-----------------------------	---

# RNAV (GPS) RWY 5

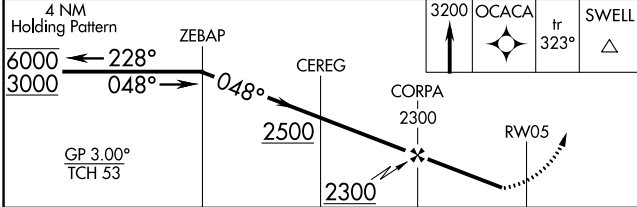
MONROE COUNTY (MNV)

RNP APCH - GPS.		MISSED APPROACH: Climb to 3200 direct OCACA and on track 323° to SWELL and hold.
<p><b>⚠</b> Circling NA NW of Rwy 5-23. Procedure NA at night. Rwy 5 helicopter visibility reduction below 1 SM NA. For uncompensated Baro-VNAV systems, LNAV/VNAV NA below -17°C or above 54°C.</p>		
AWOS-3 <b>118.475</b>	KNOXVILLE APP CON <b>123.9 353.6</b>	UNICOM <b>123.0 (CTAF)</b>



SE-1, 22 FEB 2024 to 21 MAR 2024

SE-1, 22 FEB 2024 to 21 MAR 2024



ELEV 1031	TDZE 1031
-----------	-----------

MIRL Rwy 5-23  
REIL Rwys 5 and 23

CATEGORY	A	B	C	D
LPV DA	1395-1	364 (400-1)		NA
LNAV/VNAV DA	1538-1 $\frac{3}{8}$	507 (600-1 $\frac{3}{8}$ )		NA
LNAV MDA	1680-1	649 (700-1)	1680-1 $\frac{1}{8}$ 649 (700-1 $\frac{1}{8}$ )	NA
<b>C</b> CIRCLING	1680-1	649 (700-1)	1680-1 $\frac{1}{8}$ 649 (700-1 $\frac{1}{8}$ )	NA