

APP CRS	Rwy Idg	3301
240°	TDZE	1213
	Apt Elev	1215

RNAV (GPS) RWY 24

MARSHALL COUNTY (MPG)

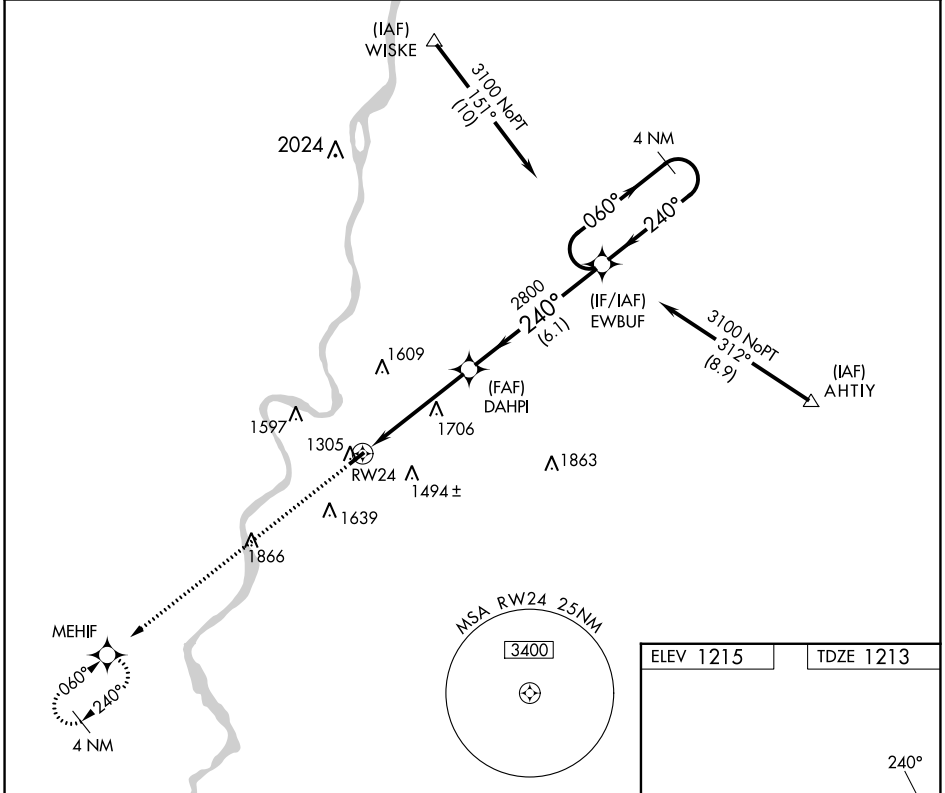
RNP APCH.

▼ When local altimeter setting not received, use Wheeling altimeter setting and increase all MDA 60 feet. Rwy 24 helicopter visibility reduction below $\frac{3}{4}$ SM NA.

▲ NA

MISSED APPROACH: Climb to 3000 direct MEHIF and hold.

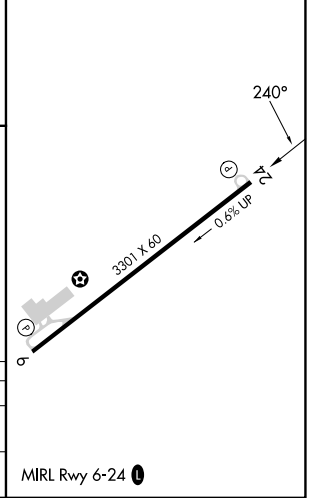
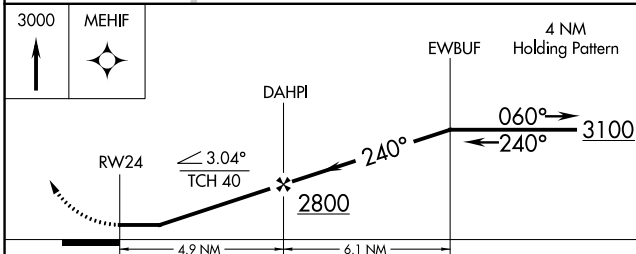
AWOS-3 119.05	CLEVELAND CENTER 126.95 239.30	UNICOM 122.7 (CTAF) 0
-------------------------	--	---------------------------------



NE-4, 22 FEB 2024 to 21 MAR 2024

NE-4, 22 FEB 2024 to 21 MAR 2024

ELEV 1215	TDZE 1213
-----------	-----------



CATEGORY	A	B	C	D
LNVA MDA	1960-1 747 (800-1)	1960-1½ 747 (800-1½)	1960-2¼ 747 (800-2¼)	NA
CIRCLING	1960-1 745 (800-1)	1960-1½ 745 (800-1½)	1960-2¼ 745 (800-2¼)	NA

MIRL Rwy 6-24 0