

VOR/DME MSO <b>112.8</b> Chan <b>75</b>	APP CRS <b>339°</b>	Rwy Idg TDZE Apt Elev <b>N/A</b> <b>N/A</b> <b>3206</b>
---	------------------------	--

# VOR-B

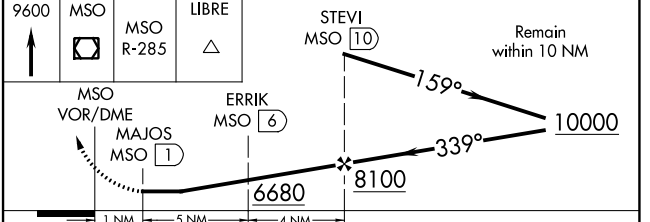
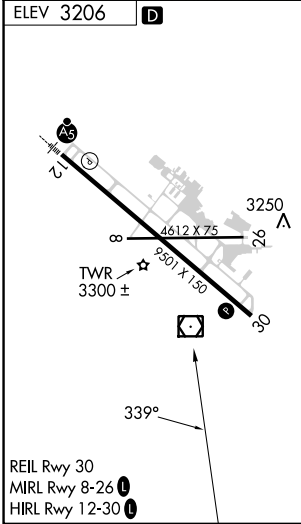
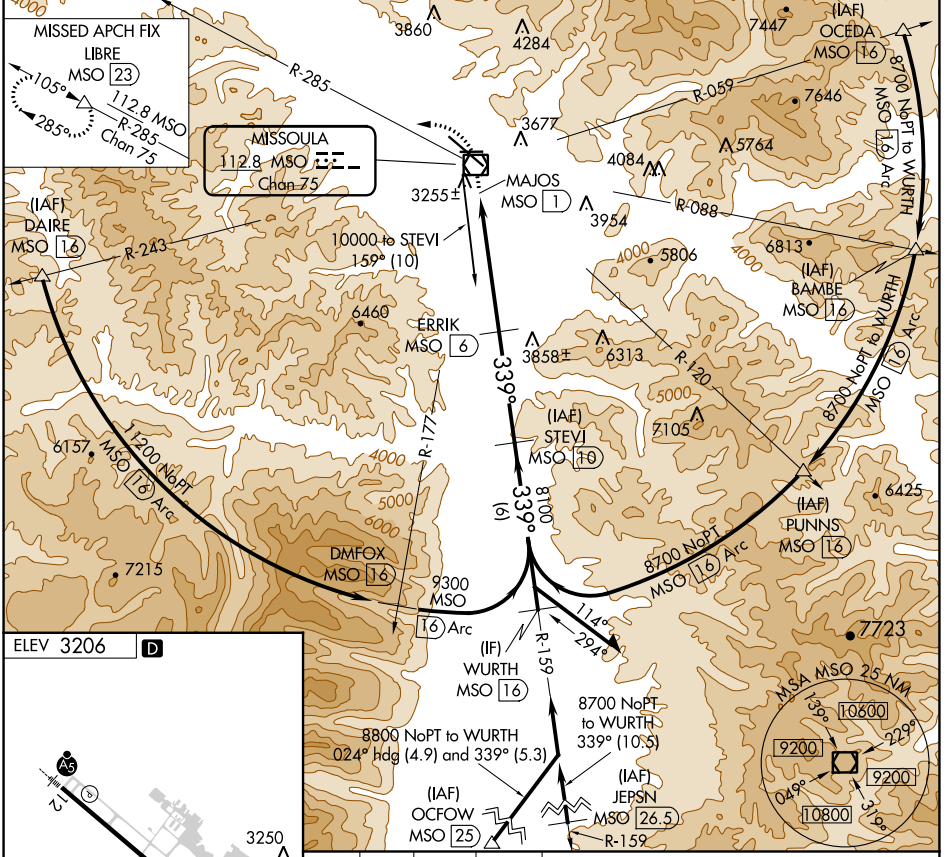
MISSOULA MONTANA (MSO)

RADAR required for procedure entry at JEPSN. DME required.

MISSOULA TOWER ★ **118.4 (CTAF) 0 377.175**

MISSED APPROACH: Climb to 9600 direct MSO VOR/DME and on MSO VOR/DME R-285 to LIBRE/MSO 23 DME and hold, continue climb-in-hold to 9600.

ATIS <b>126.65</b>	SPOKANE APP CON ★ <b>124.9 298.95</b>	MISSOULA TOWER ★ <b>118.4 (CTAF) 0 377.175</b>	GND CON <b>121.9</b>	UNICOM <b>122.95</b>
-----------------------	--	---	-------------------------	-------------------------



CATEGORY	A	B	C	D
<b>CIRCLING</b>	4920-1¼ 1714 (1800-1¼)	4920-1½ 1714 (1800-1½)	4920-3 1714 (1800-3)	5160-3 1954 (2000-3)

NW-1, 22 FEB 2024 to 21 MAR 2024

NW-1, 22 FEB 2024 to 21 MAR 2024