

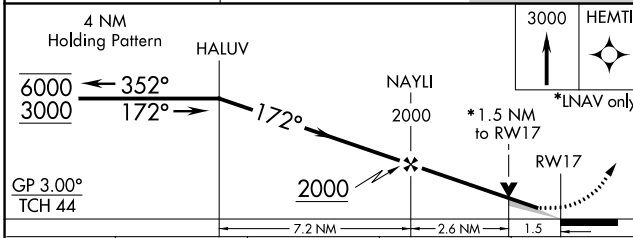
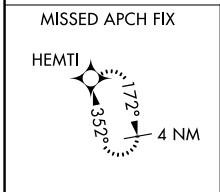
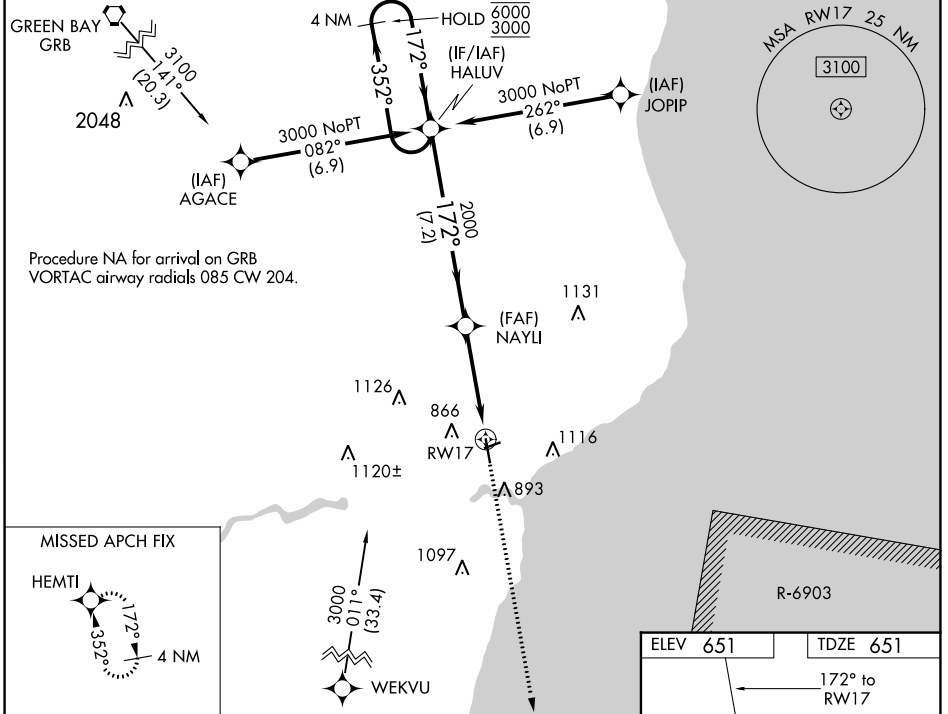
WAAS CH 63111 W17A	APP CRS 172°	Rwy Idg TDZE Apt Elev	5001 651 651
--	------------------------	-----------------------------	---

RNAV (GPS) RWY 17

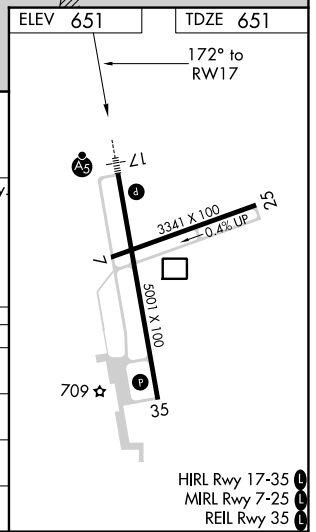
MANITOWOC COUNTY (MTW)

RNP APCH.	<p>▼ For uncompensated Baro-VNAV systems, LNAV/VNAV NA below -16°C or above 54°C. For inop ALS, increase LNAV/VNAV all Cats visibility to 7/8 SM.</p>	<p>MALSR</p>	<p>MISSED APPROACH: Climb to 3000 direct HEMTI and hold.</p>
-----------	---	--------------	--

AWOS-3PT 123.775	GREEN BAY APP CON * 120.2 338.2	UNICOM 122.8 (CTAF)
----------------------------	---	-------------------------------



CATEGORY	A	B	C	D
LPV DA	851-1/2		200 (200-1/2)	
LNAV/VNAV DA	942-1/2		291 (300-1/2)	
LNAV MDA	1180-1/2	529 (600-1/2)	1180-1	529 (600-1)
C CIRCLING	1200-1	549 (600-1)	1420-2 1/4 769 (800-2 1/4)	1480-2 3/4 829 (900-2 3/4)



EC-3, 22 FEB 2024 to 21 MAR 2024

EC-3, 22 FEB 2024 to 21 MAR 2024