

WAAS CH <b>63242</b> <b>W35A</b>	APP CRS <b>357°</b>	Rwy Idg TDZE Apt Elev	<b>3598</b> <b>1411</b> <b>1411</b>
--	------------------------	-----------------------------	---

# RNAV (GPS) RWY 35

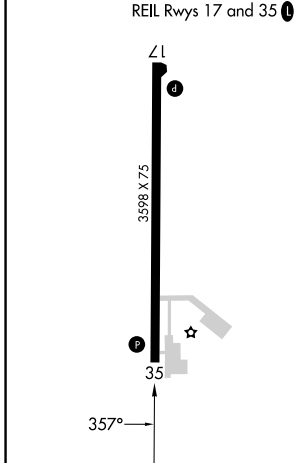
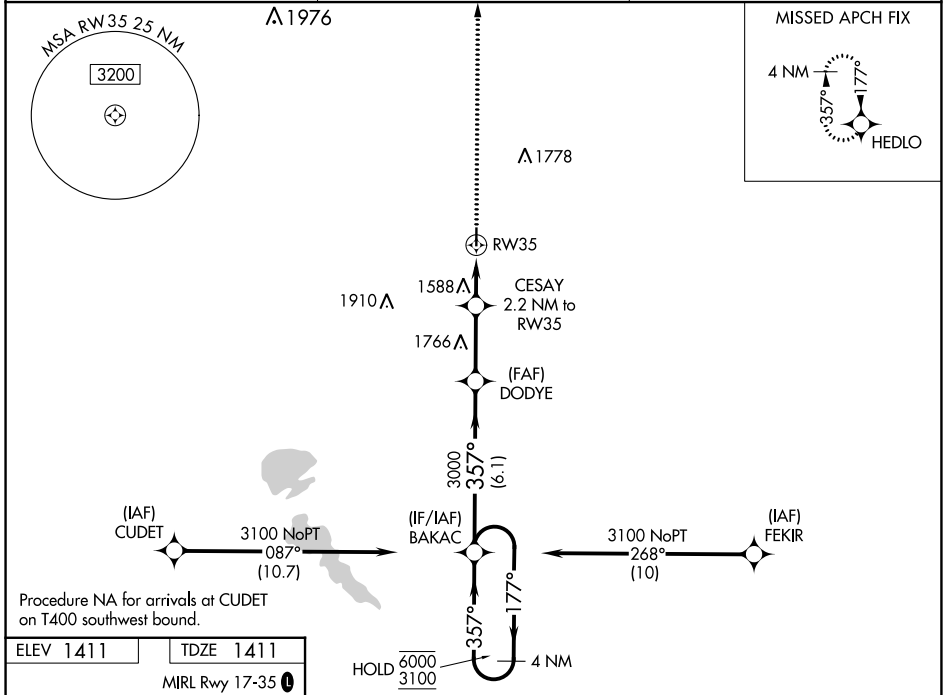
WINDOM MUNI (MWM)

RNP APCH - GPS.

**⚠** Rwy 35 helicopter visibility reduction below 3/4 SM NA. For uncompensated Baro-VNAV systems, LNAV/VNAV NA below -17°C or above 54°C.

MISSED APPROACH: Climb to 3000 direct HEDLO and hold.

AWOS-3PT <b>119.325</b>	MINNEAPOLIS CENTER <b>127.1 290.2</b>	CTAF <b>122.9 0</b>
----------------------------	--	------------------------



VGSI and RNAV glidepath not coincident (VGSI Angle 3.00/TCH 25).

3000 HEDLO

4 NM Holding Pattern

6000 ← 177°  
3100 → 357°

GP 3.00°  
TCH 40

3000 DODYE

357°

2140

CESAY 2.2 NM to RW35

1.2 NM to RW35

1.2 NM RW35

6.1 NM 2.7 NM 1 NM 1.2 NM

CATEGORY	A	B	C	D
LPV DA	1661-1	250 (300-1)		NA
LNAV/VNAV DA	1672-1	261 (300-1)		NA
LNAV MDA	1840-1	429 (500-1)	1840-1 1/4 429 (500-1 1/4)	NA
<input checked="" type="checkbox"/> CIRCLING	1880-1 469 (500-1)	1900-1 489 (500-1)	1920-1 1/2 509 (600-1 1/2)	NA

NC-1, 22 FEB 2024 to 21 MAR 2024

NC-1, 22 FEB 2024 to 21 MAR 2024