

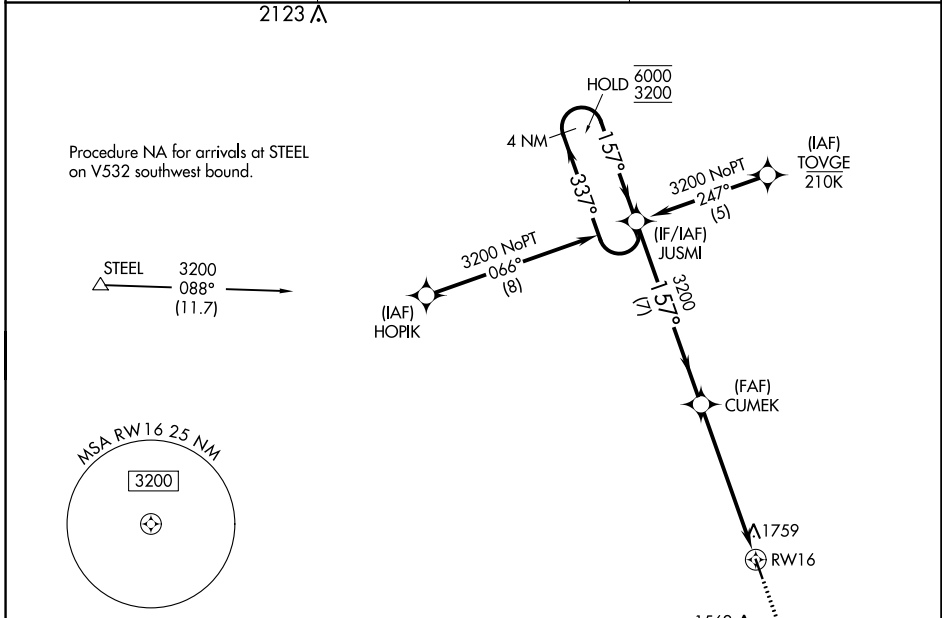
APP CRS	Rwy Idg	<b>4200</b>
<b>157°</b>	TDZE	<b>1283</b>
	Apt Elev	<b>1283</b>

# RNAV (GPS) RWY 16

MARYSVILLE MUNI (MYZ)

RNP APCH - GPS.	MISSED APPROACH: Climb to 3200 direct JELOK and hold.
<p>▼ When local altimeter setting not received, use Beatrice altimeter setting and increase all MDAs 80 feet and increase LNAV Cat A and Circling Cats B/C visibility ¼ SM.</p>	

AWOS-3PT <b>118.675</b>	KANSAS CITY CENTER <b>123.8 343.7</b>	UNICOM <b>122.8 (CTAF) 0</b>
----------------------------	------------------------------------------	---------------------------------



NC-2, 22 FEB 2024 to 21 MAR 2024

NC-2, 22 FEB 2024 to 21 MAR 2024

