

APP CRS	Rwy Idg	2077
008°	TDZE	181
	Apt Elev	181

RNAV (GPS) RWY 1

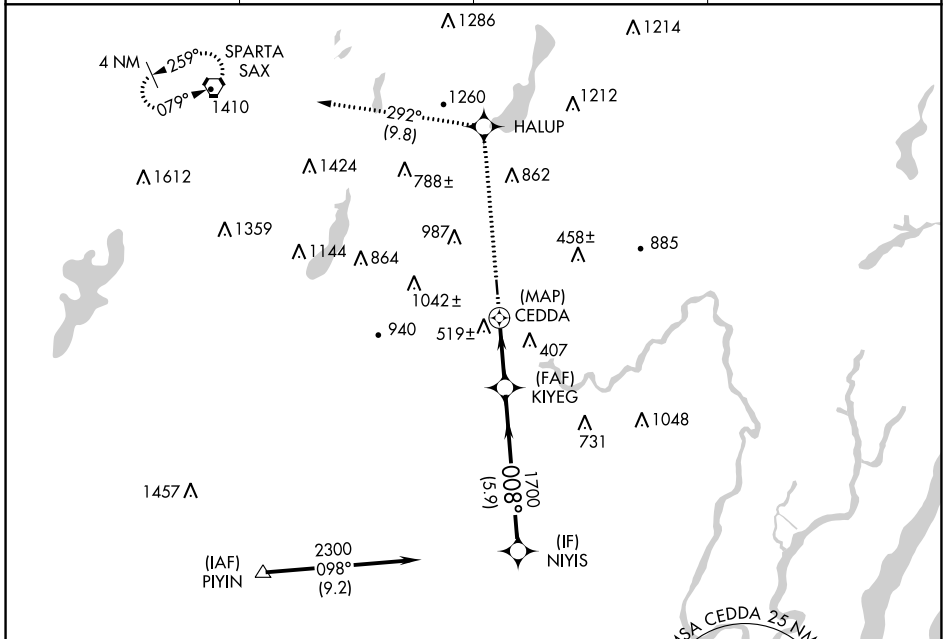
LINCOLN PARK (NØ7)

RNP APCH.

NA Rwy 1 helicopter visibility reduction below 1 SM NA.
Use Teterboro altimeter setting. Procedure NA at night.

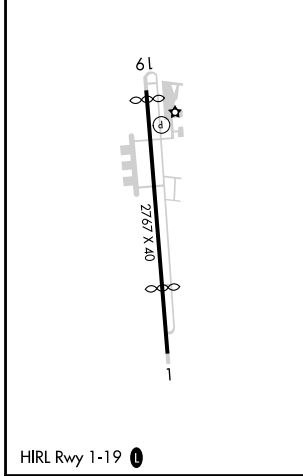
MISSED APPROACH: Climb to 3000 direct HALUP and on 292° track to SAX VORTAC and hold.

TEB D-ATIS 114.2 132.85	NEW YORK APP CON 127.6 379.9	GCO 121.725	UNICOM 122.8 (CTAF) 0
-----------------------------------	--	-----------------------	---------------------------------



ELEV 181	TDZE 181
----------	----------

Procedure NA for arrivals at PIYIN on V3-405-419 southwest bound.



3000	↑	HALUP	292° tr	SAX	NIIYIS
		CEDDA	KIIYEG	1700	2300
		4.00° TCH 30	009°		
	1 NM	2.5 NM	5.9 NM		
CATEGORY	A	B	C	D	
LNAV MDA	860-1¼ 679 (700-1¼)		NA		
CIRCLING	1260-1¼ 1079 (1100-1¼)		NA		

NE-2, 09 SEP 2021 to 07 OCT 2021

NE-2, 09 SEP 2021 to 07 OCT 2021

APP CRS	Rwy Idg	2672
204°	TDZE	181
	Apt Elev	181

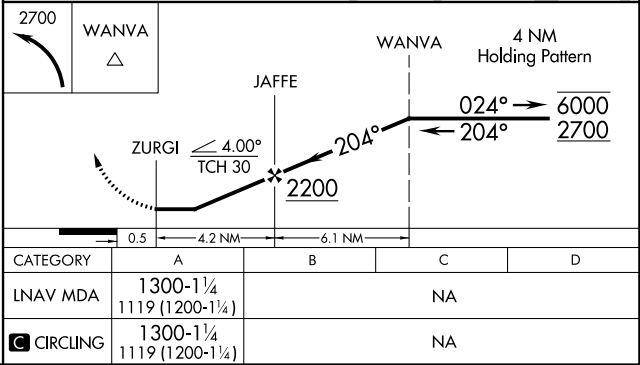
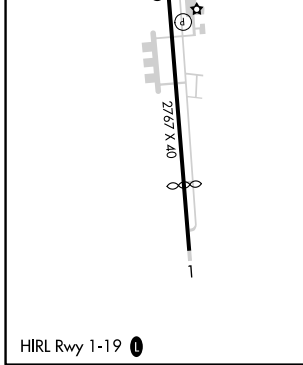
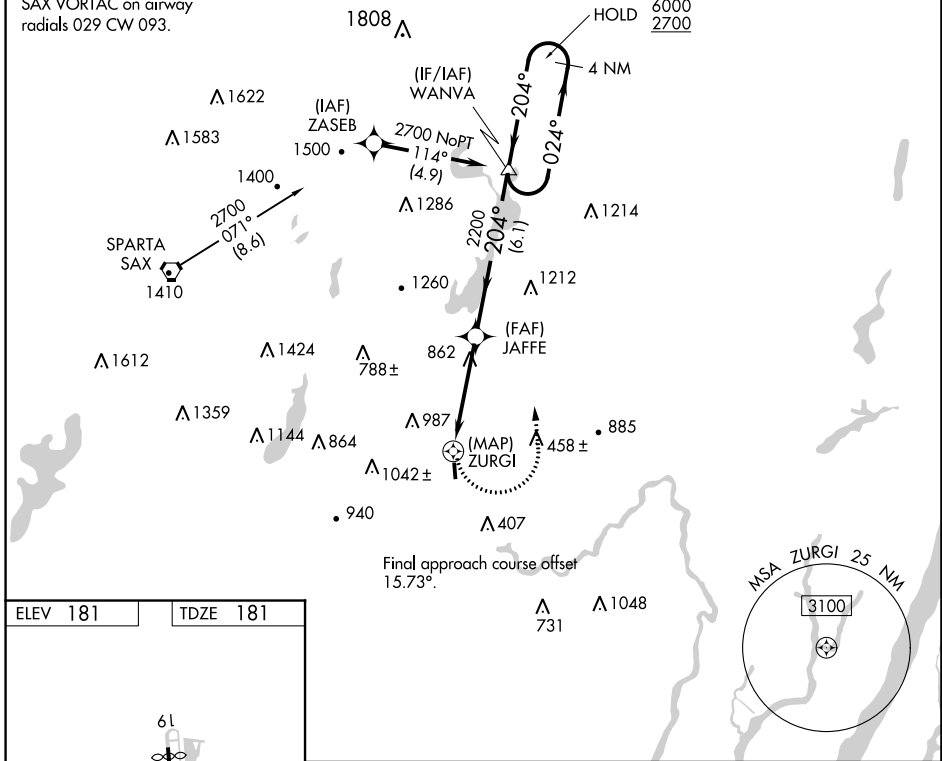
RNAV (GPS) RWY 19

LINCOLN PARK (NØ7)

RNP APCH.	<p>▼ Rwy 19 helicopter visibility reduction below 1 SM NA. ▲ NA Use Teterboro altimeter setting. Procedure NA at night.</p>	MISSED APPROACH: Climbing left turn to 2700 direct WANVA and hold.
-----------	--	--

TEB D-ATIS 114.2 132.85	NEW YORK APP CON 127.6 379.9	GCO 121.725	UNICOM 122.8 (CTAF) Ø
-----------------------------------	--	-----------------------	---------------------------------

Procedure NA for arrivals at SAX VORTAC on airway radials 029 CW 093.



NE-2, 09 SEP 2021 to 07 OCT 2021

NE-2, 09 SEP 2021 to 07 OCT 2021