

WAAS CH 86212 W22A	APP CRS 219°	Rwy Idg TDZE 322 Apt Elev 322	8000
--	------------------------	---	-------------

RNAV (GPS) RWY 22

MILLINGTON/MEMPHIS (NQA)

RNP APCH - GPS.

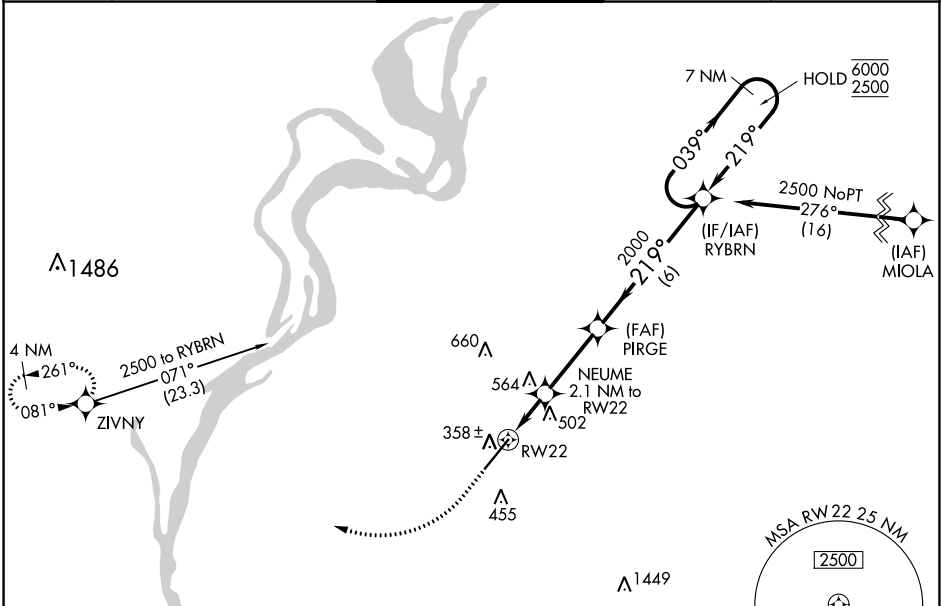
- ▼ For uncompensated Baro-VNAV systems, LNAV/VNAV NA below -15°C or above 54°C.
- ▲ For inop ALS, increase LPV Cat E visibility to ¾ SM, LNAV/VNAV all Cats visibility to 1½ SM, and LNAV Cat E visibility to 1¾ SM.

MALSR



MISSED APPROACH:
Climb to 840 then climbing right turn to 2500 direct ZIVNY and hold.

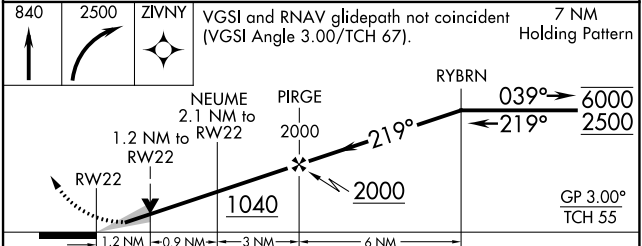
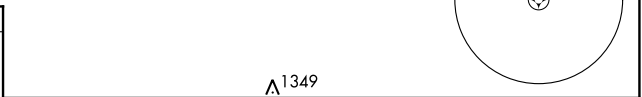
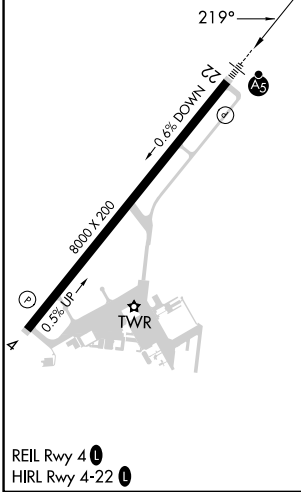
AWOS-3 118.925	MEMPHIS APP CON 119.1 291.6 125.8 338.3 (176°-355°) (356°-175°)	MILLINGTON TOWER ★ 120.25 (CTAF) 0 340.2	GND CON 121.375	UNICOM 122.95
--------------------------	--	--	---------------------------	-------------------------



SE-1, 22 FEB 2024 to 21 MAR 2024

SE-1, 22 FEB 2024 to 21 MAR 2024

ELEV 322	TDZE 322
----------	----------



CATEGORY	A	B	C	D	E
LPV DA		522-½	200 (200-½)		
LNAV/VNAV DA		784-1	462 (500-1)		
LNAV MDA	780-½	458 (500-½)	780-¾	458 (500-¾)	
CIRCLING	800-1	820-1	920-1½	960-2	960-2¼
	478 (500-1)	498 (500-1)	598 (600-1½)	638 (700-2)	638 (700-2¼)