

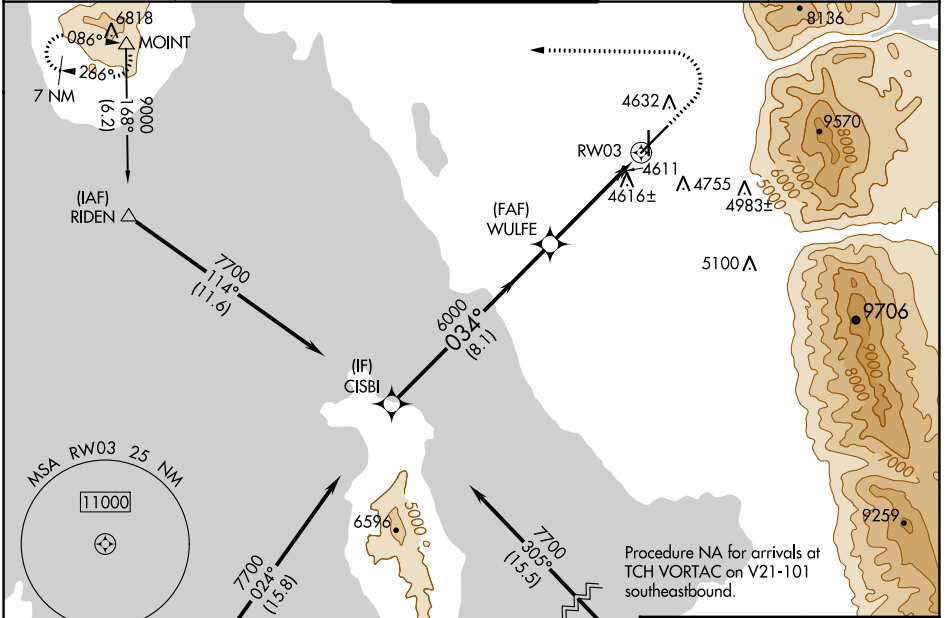
WAAS CH 65620 W03A	APP CRS 034°	Rwy Idg 7252 TDZE 4473 Apt Elev 4473
--	------------------------	---

RNAV (GPS) RWY 3

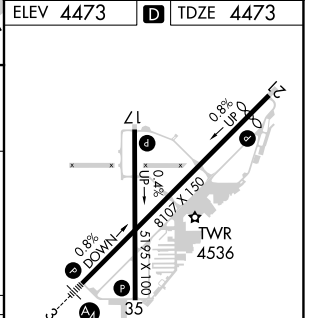
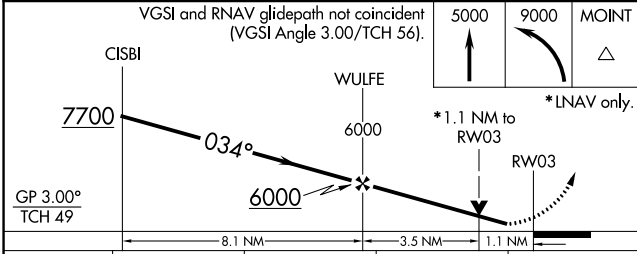
OGDEN-HINCKLEY (OGD)

RNP APCH.	MALS	MISSED APPROACH: Climb to 5000 then climbing left turn to 9000 direct MOINT and hold, continue climb-in-hold to 9000.
<p>⚠ Baro-VNAV and VDP NA when using Hill AFB altimeter setting. For uncompensated Baro-VNAV systems, LNAV/VNAV NA below -17°C or above 50°C. When local altimeter setting not received, use Hill AFB altimeter setting. Circling NA for Cats C and D east of Rwy 21 and 35. For Inop ALS, increase LPV all Cats visibility to ½ SM, increase LNAV/VNAV all Cats and LNAV Cat C/D visibility to 1 ½ SM.</p>		

ATIS 125.55	SALT LAKE CITY APP CON 121.1	OGDEN TOWER* 118.7 (CTAF) 0 253.5	GND CON 121.7	UNICOM 122.95
-----------------------	--	---	-------------------------	-------------------------



ELEV 4473	TDZE 4473
-----------	-----------



CATEGORY	A	B	C	D
LPV DA	4741-¾ 268 (300-¾)			
LNAV/VNAV DA	4889-1 416 (500-1)			
LNAV MDA	4880-¾ 407 (500-¾)		4880-1 407 (500-1)	
C CIRCLING	4980-1 507 (600-1)	5100-1 627 (700-1)	5100-1¾ 627 (700-1¾)	5180-2¼ 707 (800-2¼)

HIRL Rwy 3-21

MIRL Rwy 17-35

REIL Rwy 17 and 35

SW-4, 22 FEB 2024 to 21 MAR 2024

SW-4, 22 FEB 2024 to 21 MAR 2024