

PANAMA CITY, FLORIDA

# TACAN Z RWY 32R

TACAN PAM Chan <b>64</b>	APCH CRS <b>326°</b>	Rwy Idg <b>10,008</b> TDZE <b>14</b> Arpt Elev <b>17</b>
-----------------------------	-------------------------	--

[USAF]

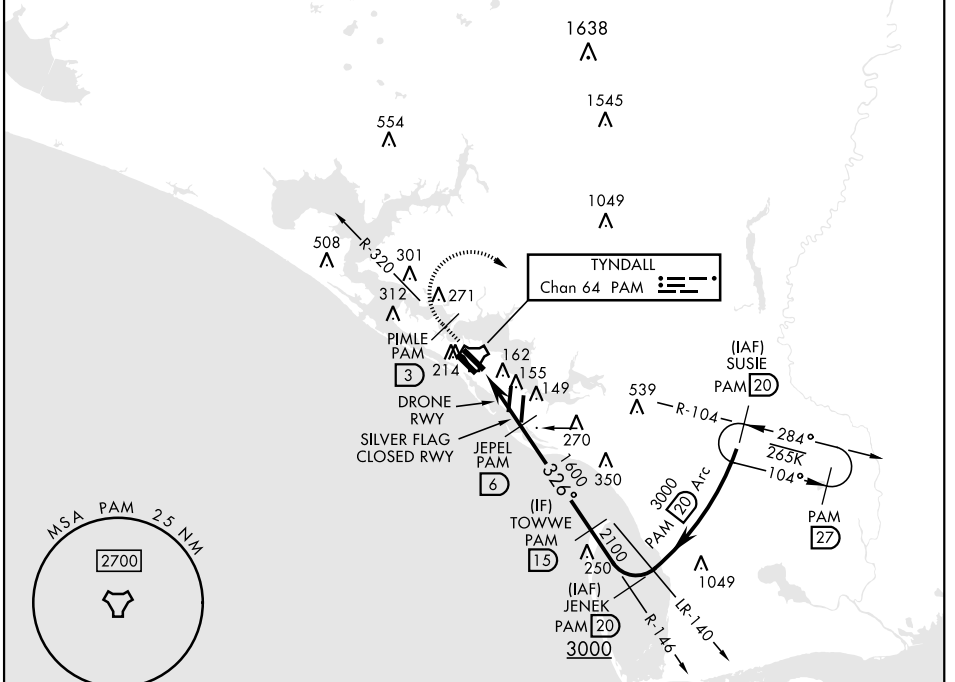
TYNDALL AFB (KPAM)

▼ \*When ALS inop, increase CAT AB RVR to 55, vis to 1 mile; CAT CDE vis to 1 3/8 miles.

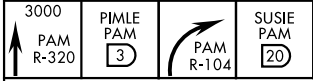


MISSED APPROACH: Track outbound PAM TACAN R-320 to 3 DME (PIMLE), then turn right to join PAM R-104 to 20 DME (SUSIE) and hold. Maintain 3000.

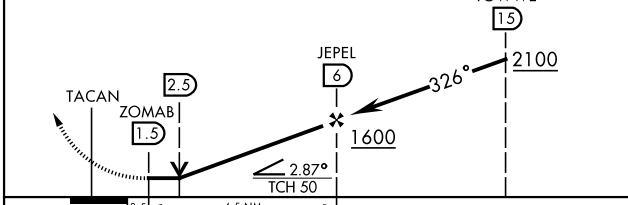
ATIS ★ <b>254.4</b>	APP CON <b>125.2 392.1</b> (N abv 5000') <b>120.825 379.3</b> (N blw 5000') <b>124.15 338.35</b> (S abv 5000') <b>119.775 317.45</b> (S blw 5000')	TOWER★ <b>133.95 263.15</b>	GND CON <b>121.9 259.3</b>	CLNC DEL <b>118.05 348.7</b>	ASR/PAR
------------------------	--	--------------------------------	-------------------------------	---------------------------------	---------



EMERG SAFE ALT 100 NM 3300

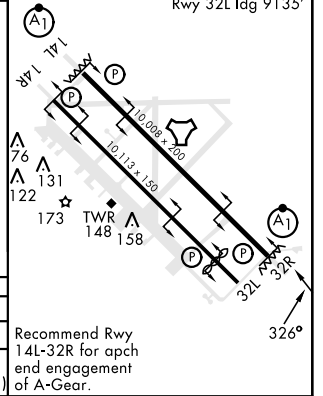


VGSI and descent angles not coincident (VGSI Angle 2.50/TCH 50).



CATEGORY	A	B	C	D	E
S-32R*	480/24	466 (500-1/2)	480/50	466 (500-1)	
CIRCLING	540-1	523 (600-1)	540-1 1/2	580-2	620-2 1/4
			523 (600-1 1/2)	563 (600-2)	603 (700-2 1/4)

ELEV 17	TDZE 14
---------	---------



Recommend Rwy 14L-32R for apch end engagement of A-Gear.

PANAMA CITY, FLORIDA  
Amdt 4 12AUG21

30°04'N-85°34'W

TYNDALL AFB (KPAM)

# TACAN Z RWY 32R

SE-3, 22 FEB 2024 to 21 MAR 2024

SE-3, 22 FEB 2024 to 21 MAR 2024