

APP CRS 003°	Rwy Idg TDZE Apt Elev	4001 98 98
------------------------	-----------------------------	---------------------------------------

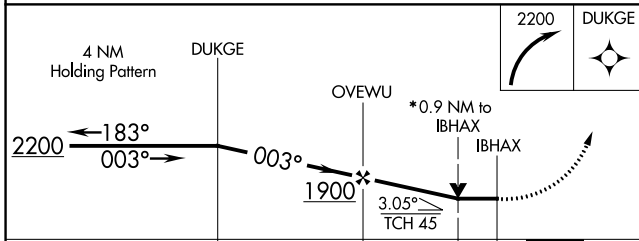
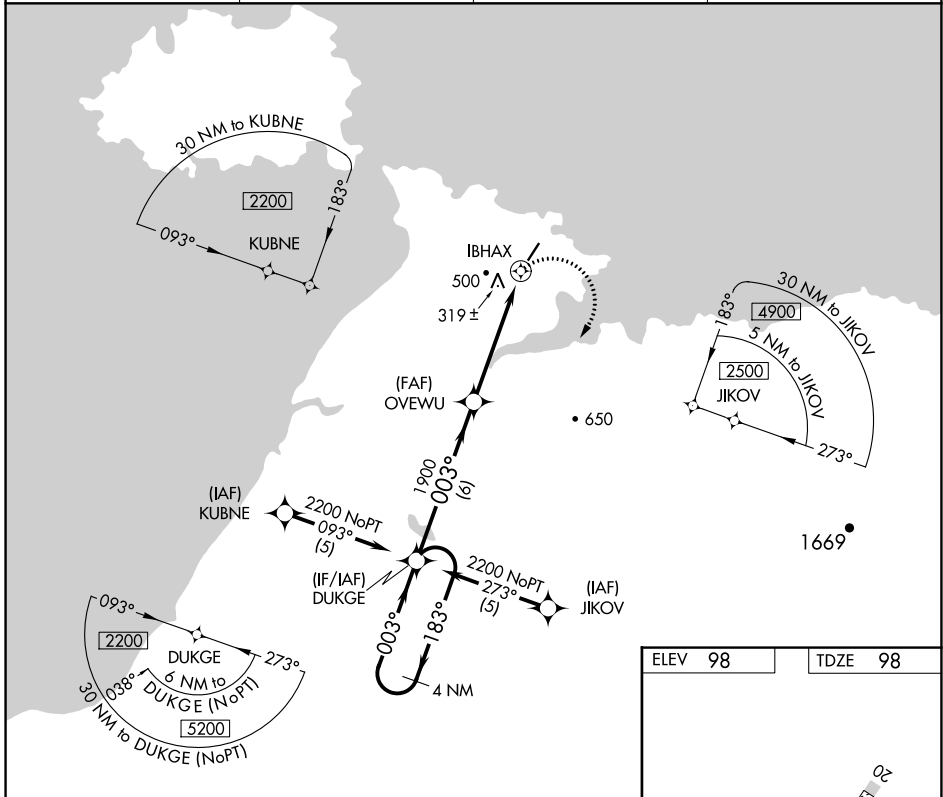
RNAV (GPS) RWY 2

ST MICHAEL (SMK) (PAMK)

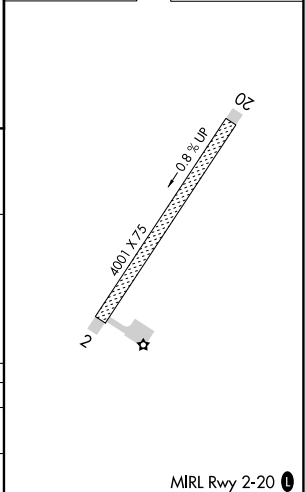
⚠ If local altimeter setting not received, use Unalakleet altimeter setting and increase all MDAs 120 feet. Circling NA west of Rwy 2-20. DME/DME RNP-0.3 NA.
* VDP NA with Unalakleet altimeter setting.

MISSED APPROACH:
Climbing right turn to 2200 direct DUKGE and hold.

AWOS-3P 119.275	ANCHORAGE CENTER 135.7	NOME RADIO 122.3	UNICOM 122.8 (CTAF) 0
---------------------------	----------------------------------	----------------------------	--



ELEV 98	TDZE 98
---------	---------



CATEGORY	A	B	C	D
LNVA MDA	580-1	482 (500-1)	580-1½ 482 (500-1¼)	580-1½ 482 (500-1½)
CIRCLING	580-1	482 (500-1)	580-1½ 482 (500-1½)	660-2 562 (600-2)

AK, 25 JAN 2024 to 21 MAR 2024

AK, 25 JAN 2024 to 21 MAR 2024

MIRL Rwy 2-20 **0**

