

WAAS CH <b>69409</b> <b>W16A</b>	APP CRS <b>162°</b>	Rwy Idg <b>3248</b> TDZE <b>17</b> Apt Elev <b>17</b>
--	------------------------	---

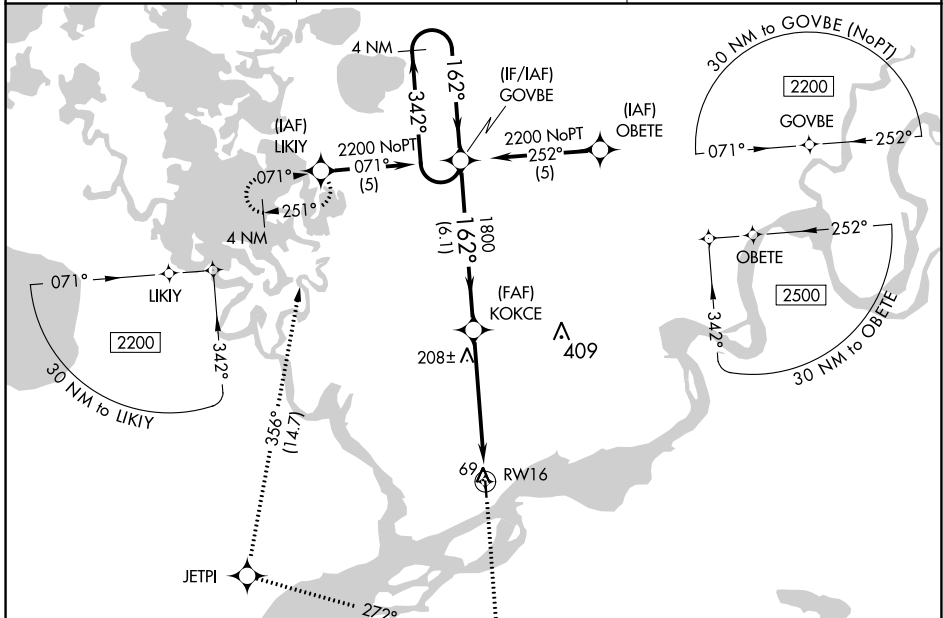
# RNAV (GPS) RWY 16

NAPAKIAK (WNA) (PANA)

**NA** DME/DME RNP-0.3 NA. When local altimeter setting not received, use Bethel altimeter setting. Rwy 16 helicopter visibility reduction 1 SM NA. Procedure NA at night for Cat C and D aircraft.

**MISSED APPROACH:** Climb to 2200 direct CUGAV and right turn on track 272° to JETPI on track 356° to LIKIY and hold.

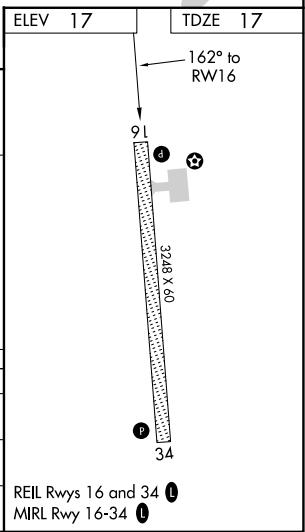
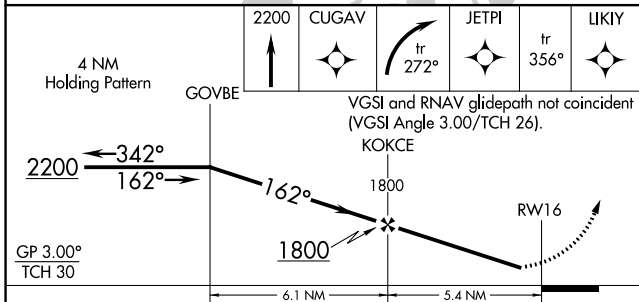
AWOS-3P <b>121.425</b>	ANCHORAGE CENTER <b>125.2 372.0</b>	CTAF <b>122.9</b>
---------------------------	--	----------------------



AK, 25 JAN 2024 to 21 MAR 2024

AK, 25 JAN 2024 to 21 MAR 2024

ELEV 17	TDZE 17
---------	---------



CATEGORY	A	B	C	D
LPV DA	298-1 281 (300-1)			
LNAV MDA	500-1	483 (500-1)	500-1½ 483 (500-1½)	500-1½ 483 (500-1½)
CIRCLING	500-1	483 (500-1)	540-1½ 523 (600-1½)	680-2 663 (700-2)

WAAS CH <b>40209</b> <b>W34A</b>	APP CRS <b>342°</b>	Rwy ldg <b>3248</b> TDZE <b>17</b> Apt Elev <b>17</b>
--	------------------------	---

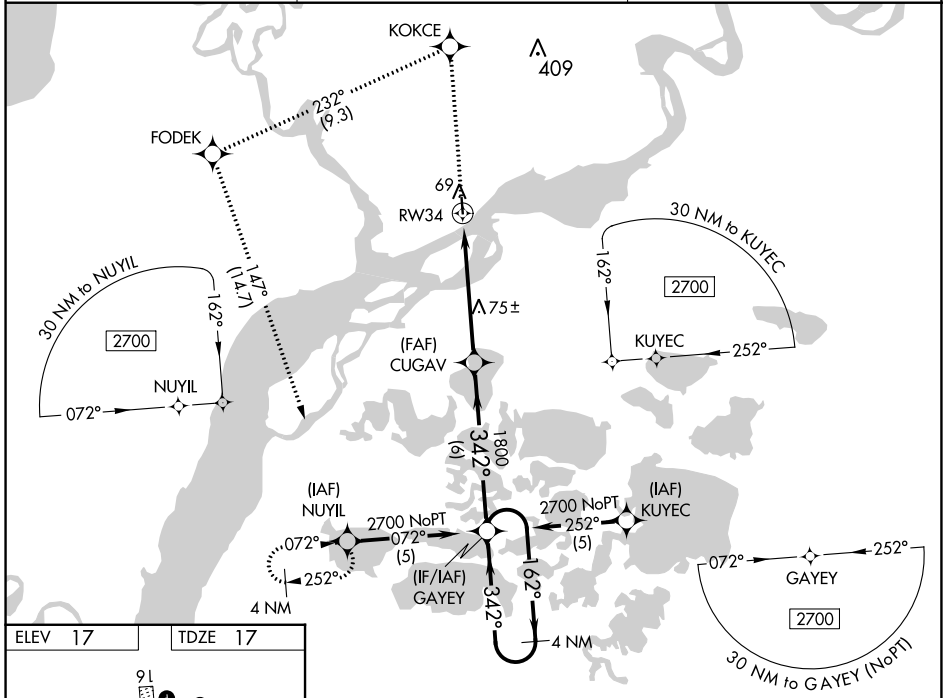
# RNAV (GPS) RWY 34

NAPAKIAK (WNA) (PANA)

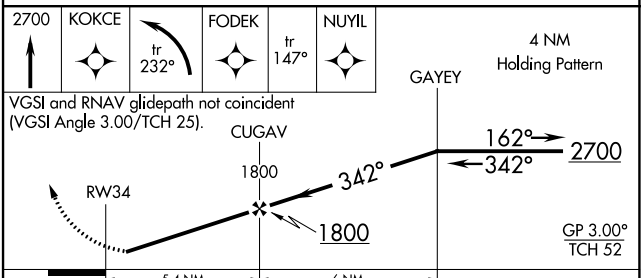
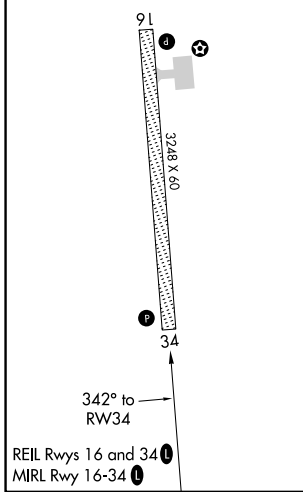
**V** DME/DME RNP-0.3 NA. When local altimeter setting not received, use Bethel altimeter setting. Procedure NA at night for Cat C and D aircraft. Rwy 34 helicopter visibility reduction 1 SM NA.

**MISSED APPROACH:** Climb to 2700 direct KOKCE and left turn on track 232° to FODEK on track 147° to NUYIL and hold.

AWOS-3P <b>121.425</b>	ANCHORAGE CENTER <b>125.2 372.0</b>	CTAF <b>122.9</b>
---------------------------	--	----------------------



ELEV 17	TDZE 17
---------	---------



CATEGORY	A	B	C	D
LPV DA	298-1 281 (300-1)			
LNAV MDA	360-1 343 (400-1)		360-1¼ 343 (400-1¼)	
CIRCLING	500-1	483 (500-1)	540-1½ 523 (600-1½)	680-2 663 (700-2)

AK, 25 JAN 2024 to 21 MAR 2024

AK, 25 JAN 2024 to 21 MAR 2024