

WAAS CH 48924 W23A	APP CRS 232°	Rwy Idg TDZE Apt Elev	5100 1719 1720
--	------------------------	-----------------------------	---

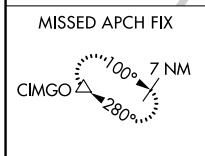
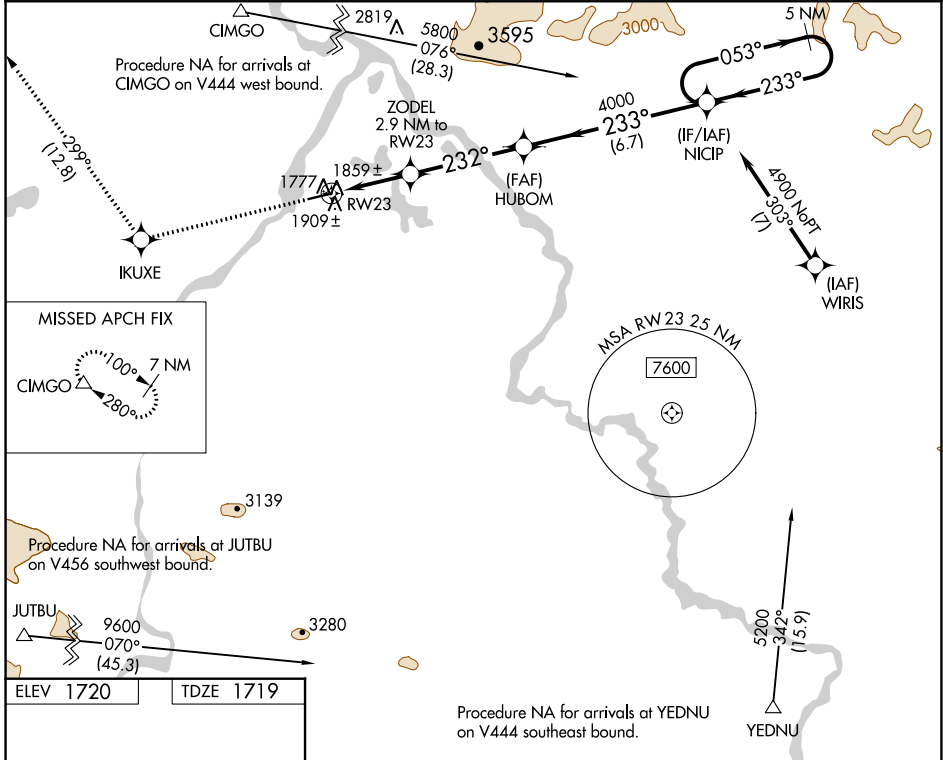
RNAV (GPS) RWY 23

NORTHWAY (ORT)(PAOR)

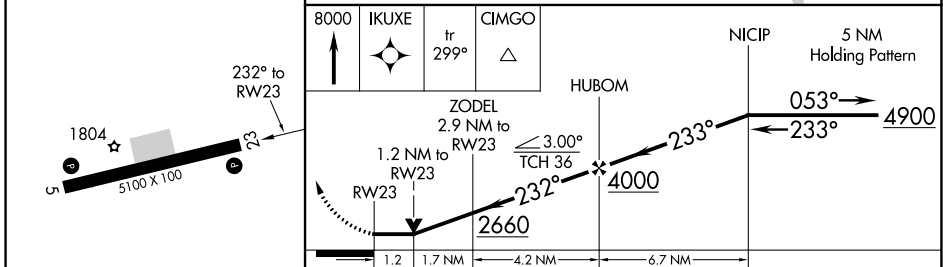
⚠ When local altimeter setting not received, procedure NA.
⚠ DME/DME RNP-0.3 NA. Helicopter visibility reduction below 3/4 SM NA.

MISSED APPROACH: Climb to 8000 direct IKUXE and on track 299° to CIMGO and hold, continue climb-in-hold to 8000.

ASOS 135.4	ANCHORAGE CENTER 126.55 323.0	NORTHWAY RADIO 123.6 (CTAF) 0
----------------------	---	---



ELEV 1720	TDZE 1719
-----------	-----------



CATEGORY	A	B	C	D
LP MDA	2120-1	401 (400-1)	2120-1½	401 (400-1½)
LNAV MDA	2160-1	441 (500-1)	2160-1¾	441 (500-1¾)
CIRCLING	2260-1	540 (600-1)	2320-1½ 600 (600-1½)	2400-2¼ 680 (700-2¼)

AK, 25 JAN 2024 to 21 MAR 2024

AK, 25 JAN 2024 to 21 MAR 2024

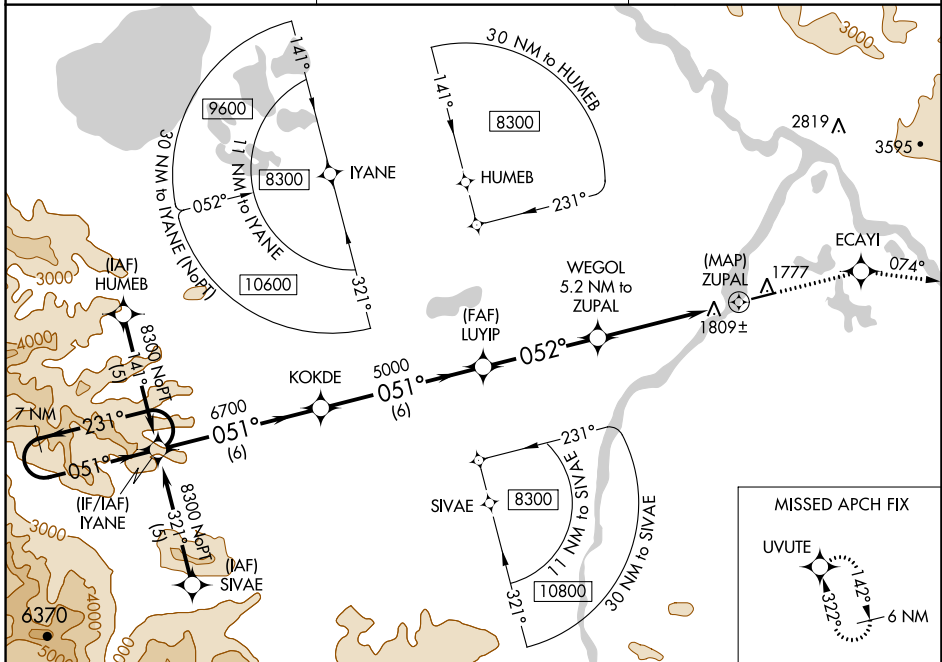
APP CRS	Rwy Idg	5100
052°	TDZE	1713
	Apt Elev	1720

RNAV (GPS) RWY 5

NORTHWAY (ORT)(PAOR)

	DME/DME RNP-0.3 NA.	MISSED APPROACH: Climb to 4700 direct ECAYI and via 074° track to UVUTE and hold.
	-38°C Helicopter visibility reduction below 3/4 SM NA.	

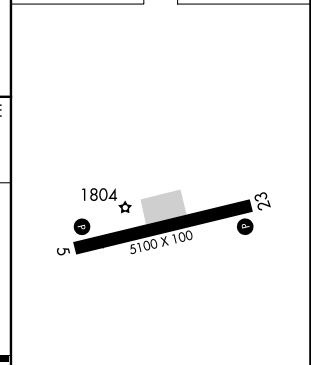
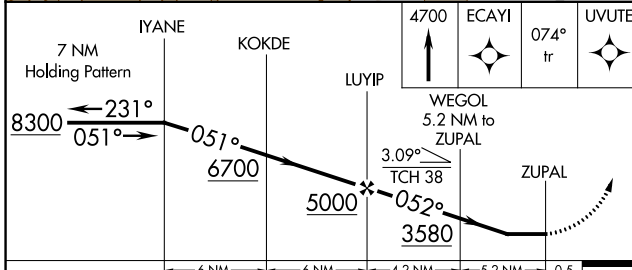
ASOS 135.4	ANCHORAGE CENTER 126.55 323.0	NORTHWAY RADIO 123.6 (CTAF) 0
----------------------	---	---



AK, 25 JAN 2024 to 21 MAR 2024

AK, 25 JAN 2024 to 21 MAR 2024

ELEV 1720	TDZE 1713
-----------	-----------



CATEGORY	A	B	C	D
LNVA MDA	2060-1 347 (400-1)		2060-1 1/4 347 (400-1 1/4)	
CIRCLING	2260-1 540 (600-1)		2320-1 1/2 600 (600-1 1/2)	2400-2 1/4 680 (700-2 1/4)

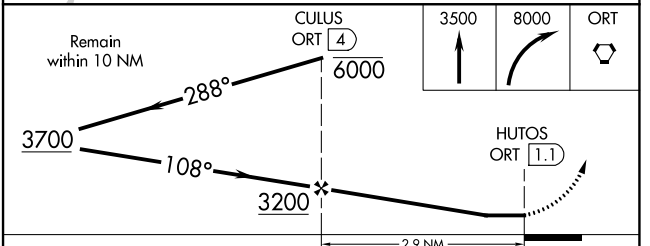
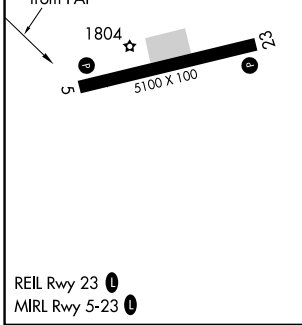
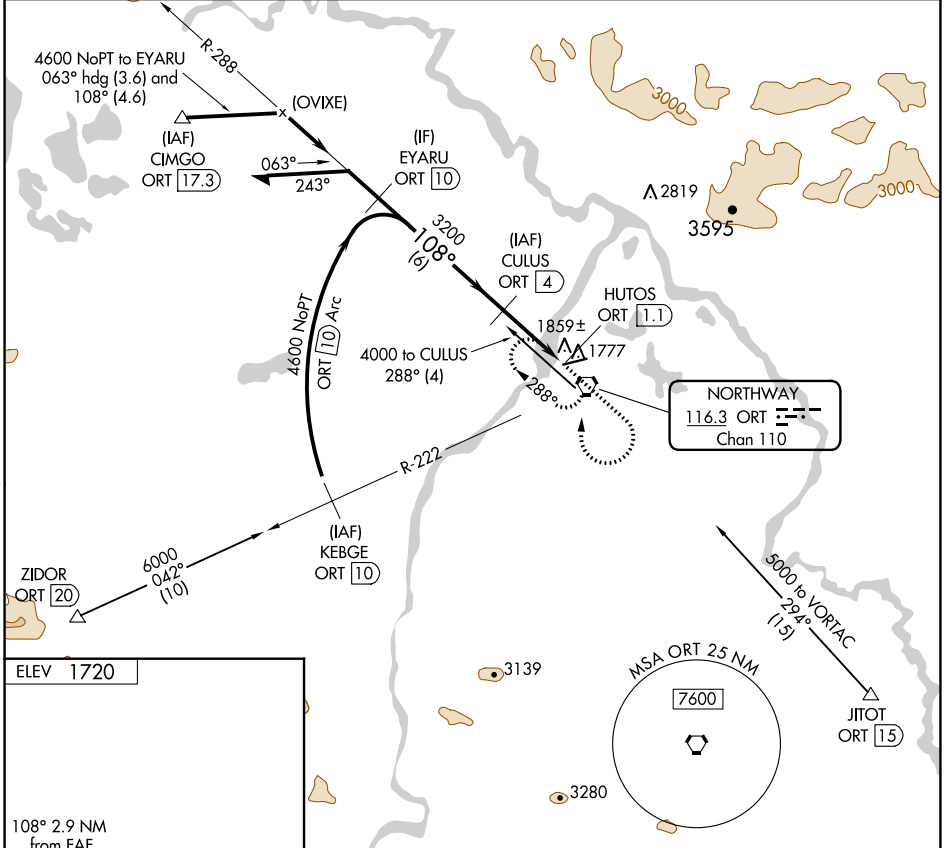
REIL Rwy 23 0
MIRL Rwy 5-23 0

VORTAC ORT 116.3 Chan 110	APP CRS 108°	Rwy Idg TDZE Apt Elev N/A N/A 1720
---	------------------------	--

VOR/DME-A NORTHWAY (ORT)(PAOR)

MISSED APPROACH: Climb to 3500 then climbing right turn to 8000
direct ORT VORTAC and hold, continue climb-in-hold to 8000.

ASOS 135.4	ANCHORAGE CENTER 126.55 323.0	NORTHWAY RADIO 123.6 (CTAF) 0
----------------------	---	--



CATEGORY	A	B	C	D
CIRCLING	2260-1	540 (600-1)	2320-1½ 600 (600-1½)	2400-2¼ 680 (700-2¼)

AK, 25 JAN 2024 to 21 MAR 2024

AK, 25 JAN 2024 to 21 MAR 2024