

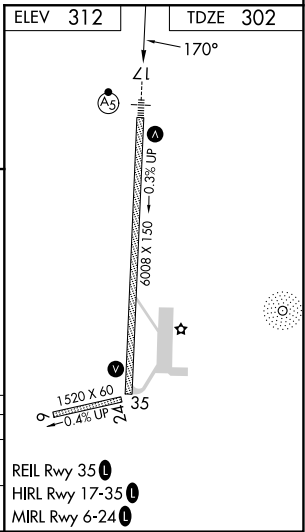
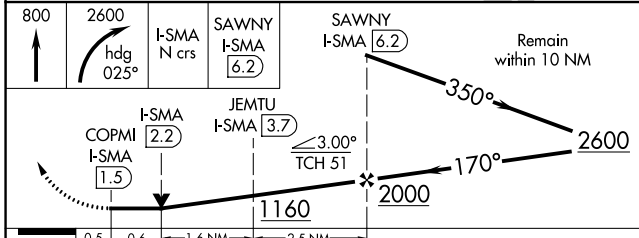
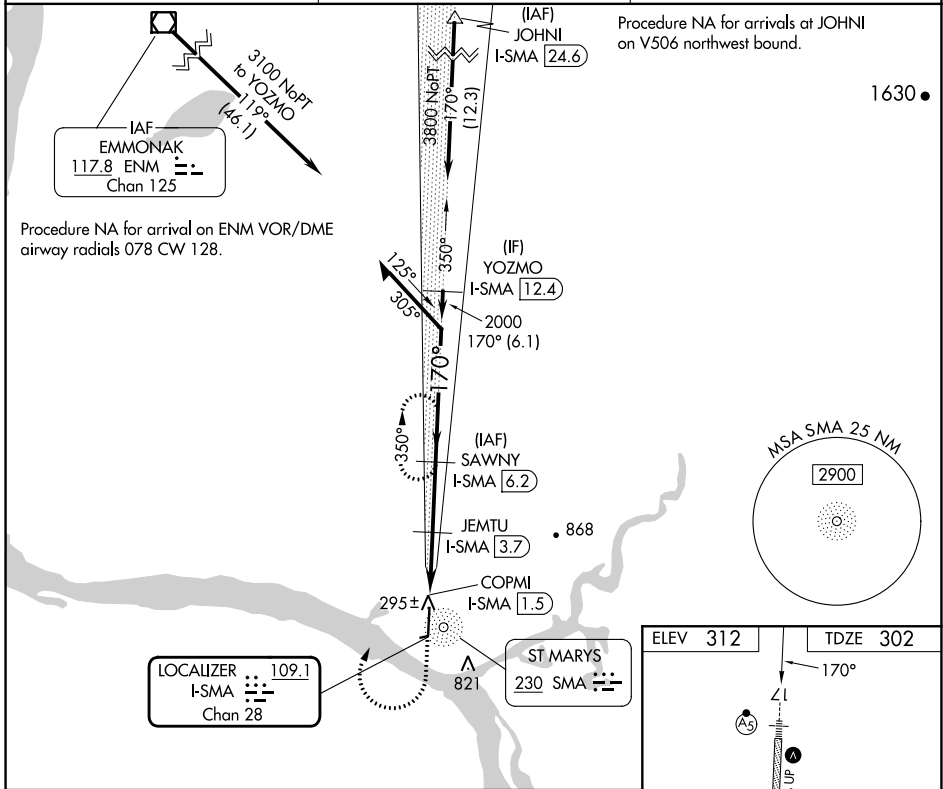
LOC/DME I-SMA <b>109.1</b> Chan <b>28</b>	APP CRS <b>170°</b>	Rwy Idg <b>6008</b> TDZE <b>302</b> Apt Elev <b>312</b>
---	------------------------	---

# LOC RWY 17

ST MARY'S (KSM)(PASM)

DME required.	MALS R	MISSED APPROACH: Climb to 800 then climbing right turn to 2600 on heading 025° and on I-SMA north course to SAWNY/I-SMA 6.2 DME and hold, continue climb-in-hold to 2600.
<p>▼ Circling NA east of Rwy 17-35. Inop table does not apply to Cats A and B. For inop ALS, increase Cat C/D visibility to 1 1/8 SM.</p> <p>▲</p>		

AWOS-3P <b>128.7</b>	ANCHORAGE CENTER <b>124.0</b>	CTAF <b>122.3</b>
-------------------------	----------------------------------	----------------------



CATEGORY	A	B	C	D
S-17	700-1 398 (400-1)			
CIRCLING	820-1 508 (600-1)	820-1 1/2 508 (600-1 1/2)	880-2 568 (600-2)	

AK, 25 JAN 2024 to 21 MAR 2024

AK, 25 JAN 2024 to 21 MAR 2024

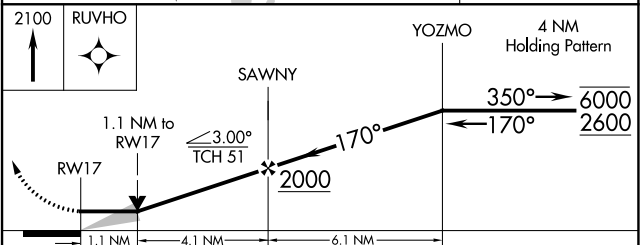
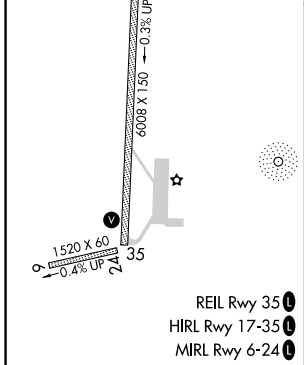
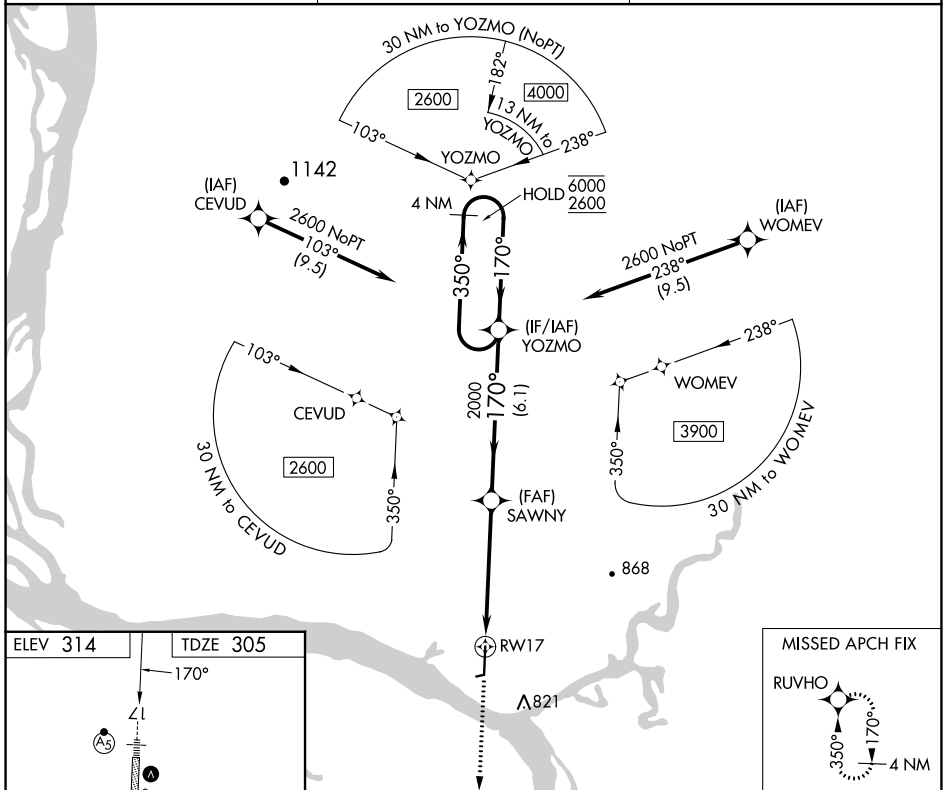
APP CRS	Rwy Idg	<b>6008</b>
<b>170°</b>	TDZE	<b>305</b>
	Apt Elev	<b>314</b>

# RNAV (GPS) RWY 17

ST MARY'S (KSM)(PASM)

RNP APCH-GPS.	MALSR	MISSED APPROACH: Climb to 2100 direct RUVHO and hold.
<p>Circling to Rwy 6 NA at night. Circling NA east of Rwy 17-35. Inop table does not apply.</p>		

AWOS-3P <b>128.7</b>	ANCHORAGE CENTER <b>124.0</b>	CTAF <b>122.3</b>
-------------------------	----------------------------------	----------------------



CATEGORY	A	B	C	D
LNAV MDA	700-1 395 (400-1)		700-1½ 395 (400-1½)	
<input checked="" type="checkbox"/> CIRCLING	820-1 506 (600-1)		820-1½ 506 (600-1½)	880-2 566 (600-2)

AK, 25 JAN 2024 to 21 MAR 2024

AK, 25 JAN 2024 to 21 MAR 2024

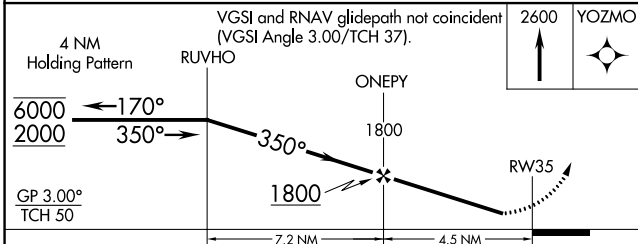
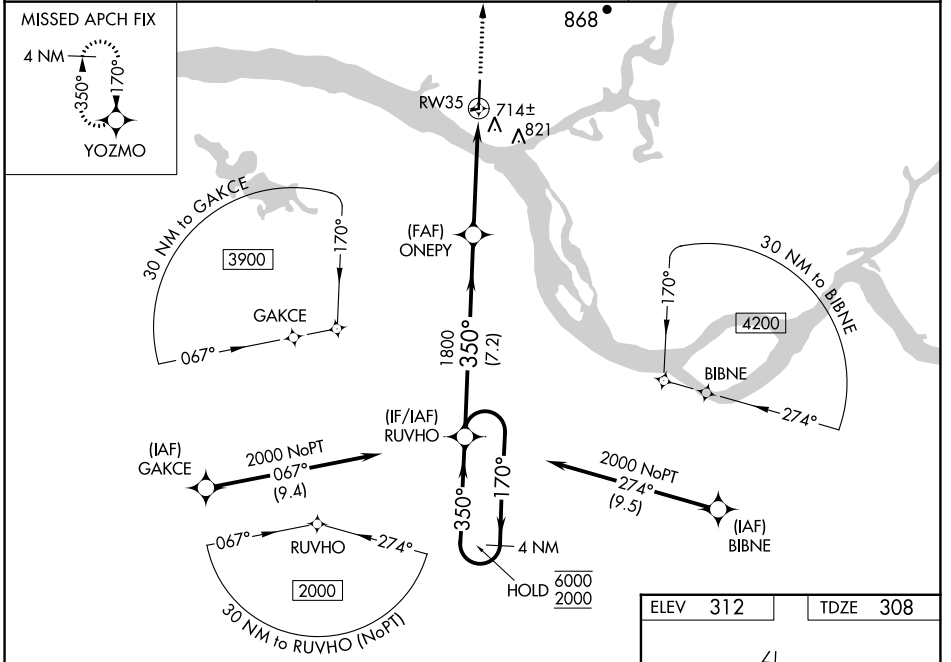
WAAS CH <b>87028</b> <b>W35A</b>	APP CRS <b>350°</b>	Rwy Idg TDZE Apt Elev	<b>6008</b> <b>308</b> <b>312</b>
--	------------------------	-----------------------------	---

# RNAV (GPS) RWY 35

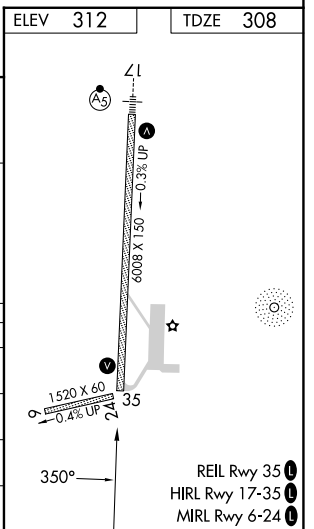
ST MARY'S (KSM)(PASM)

RNP APCH.	<p><b>⚠</b> Circling NA east of Rwy 17-35. Rwy 35 helicopter visibility reduction below 1 SM NA. Baro-VNAV NA when using Mountain Village altimeter setting. For uncompensated Baro-VNAV systems, LNAV/VNAV NA below -19°C or above 54°C. When local altimeter setting not received, use Mountain Village altimeter setting and increase all DA 29 feet and all MDAs 40 feet and LNAV visibility Cat C/D 1/8 SM and Circling visibility Cat C 1/8 SM, Cat D 1/4 SM.</p>	MISSED APPROACH: Climb to 2600 direct YOZMO and hold.
-----------	---	--

AWOS-3P <b>128.7</b>	ANCHORAGE CENTER <b>124.0</b>	CTAF <b>122.3</b>
-------------------------	----------------------------------	----------------------



CATEGORY	A	B	C	D
LPV DA	508-1		200 (200-1)	
LNAV/VNAV DA	884-2		576 (600-2)	
LNAV MDA	960-1 652 (700-1)		960-1 7/8 652 (700-1 7/8)	
<b>C</b> CIRCLING	960-1 648 (700-1)		960-2 648 (700-2)	



AK, 25 JAN 2024 to 21 MAR 2024

AK, 25 JAN 2024 to 21 MAR 2024