

AL-757 (USN)

COPTER TACAN RWY 22

KANEHOE BAY MCAS (PHNG)

RADAR required.

▼ * Circling not authorized SE of Rwy 04-22.
 Visibility reduction not authorized.

† MISSED APPROACH: Climbing right turn to 1800, intercept NCH TACAN R-010 and proceed direct WEGDO and hold.

ATIS 284.5	APP/DEP CON 125.0 263.5	TOWER 120.7(CTAF) 360.2	GND CON 382.8	CINC DEL 294.7	ASR/ PAR
----------------------	-----------------------------------	-----------------------------------	-------------------------	--------------------------	-------------

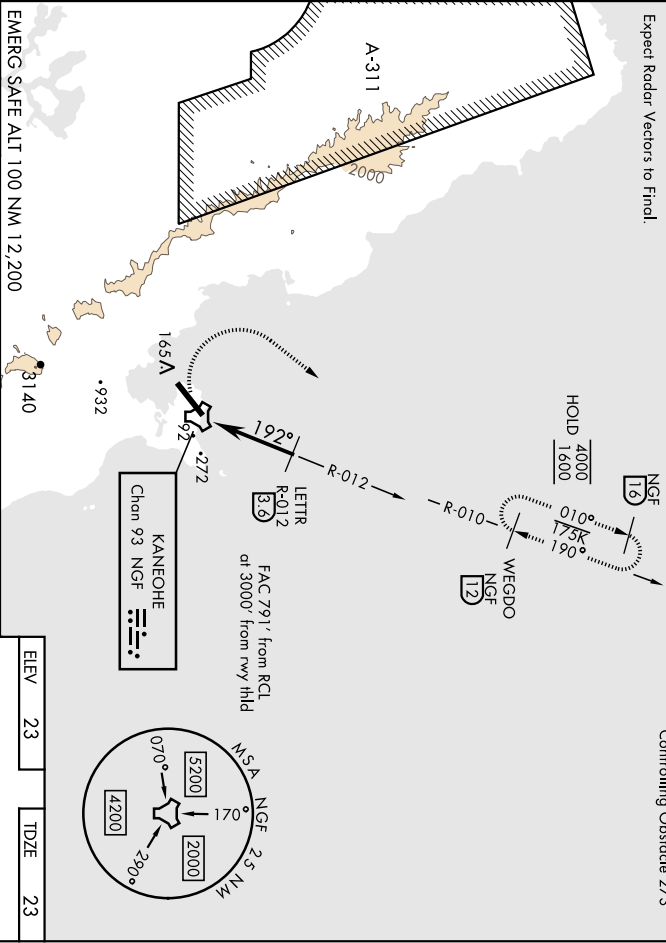
CAUTION: Mountainous terrain E, S, and W of airfield.

† Min climb of 326 ft/NM to 800

Knots	60	120
V/V(fpm)	326	652

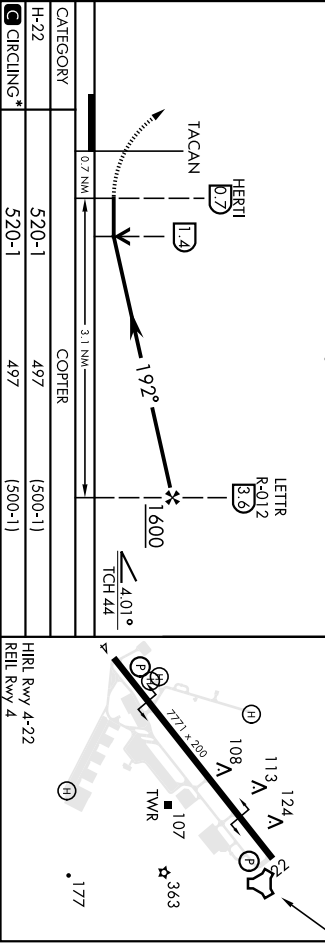
Max procedure airspeed 90 KIAS.

Expect Radar Vectors to Final.



1800 EMERG SAFE ALT 100 NM 12,200	WEGDO NGF R-010 12	TA 18,000	ELEV 23	TDZE 23
--------------------------------------	------------------------------------	-----------	---------	---------

VGSI and Descent Angles not Coincident
 (VGSI Angle 3.00/TCH 44)



CATEGORY	520-1	COPTER	(500-1)	HRL Rwy 4-22
H-22	520-1	497	(500-1)	REIL Rwy 4
◻ CIRCLING*	520-1	497	(500-1)	

MOKAPU POINT, OAHU I, HAWAII
 2° 27'N-157° 46'W
 KANEHOE BAY MCAS (PHNG)
 COPTER TACAN RWY 22

HI-TACAN Y RWY 22

KANEHOE BAY MCAS (PHNG)

AL-757 (USN)

TACAN NGF Chan 93	APCH CRS 206°	Rwy Idg 77722
		TDZE 23
		Appt Elev 23

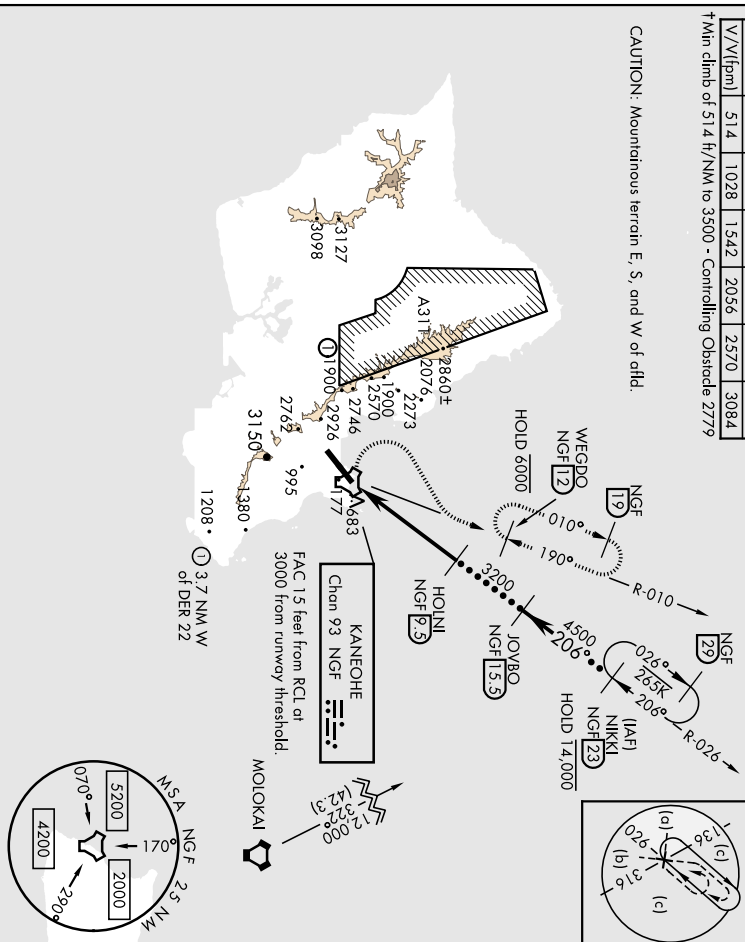
▼ *Circling not authorized SE of Rwy 4-22.

† MISSED APPROACH: Climbing right turn to 4100, intercept NGF TACAN R-010 and proceed direct WEGDO and hold.

ATIS 284.5	APP/DEP CON 125.0 263.5	TOWER 120.7 (CTAF) 360.2	GND CON 382.8	CLNC DEL 294.7	ASR/PAR
Knots	60 120 180 240 300 360				
V/M/fpm	51.4 102.8 154.2 205.6 257.0 308.4				

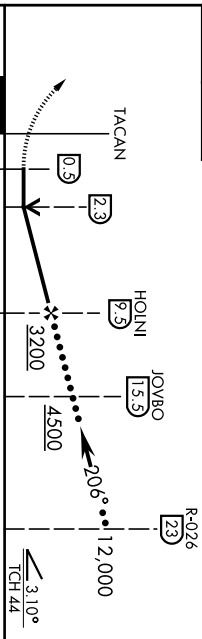
† Min climb of 51.4 ft/NM to 3500 - Controlling Obstacle 2779

CAUTION: Mountainous terrain E, S, and W of field.



EMERG SAFE ALT 100 NM, 12,200

4100	WEGDO	TA 18,000
NGF	NGF	
R-010	12	



CATEGORY	C	D	E
S-22	820-2 1/2	797	[800-2 1/2]
DIRCLING *	1020-3 997 (1000-3)	3120-3 3097 (3100-3)	

ELEV	23	TDZE	23
HIRL Rwy 4-22			
REIL Rwy 4			

MOKAPU POINT, OAHU I, HAWAII
21° 27' N-157° 46' W
KANEHOE BAY MCAS (PHNG)

HI-TACAN Y RWY 22

TACAN Z RWY 22

KANEHOE BAY MCAS (PHNG)

AL-757 (USN)

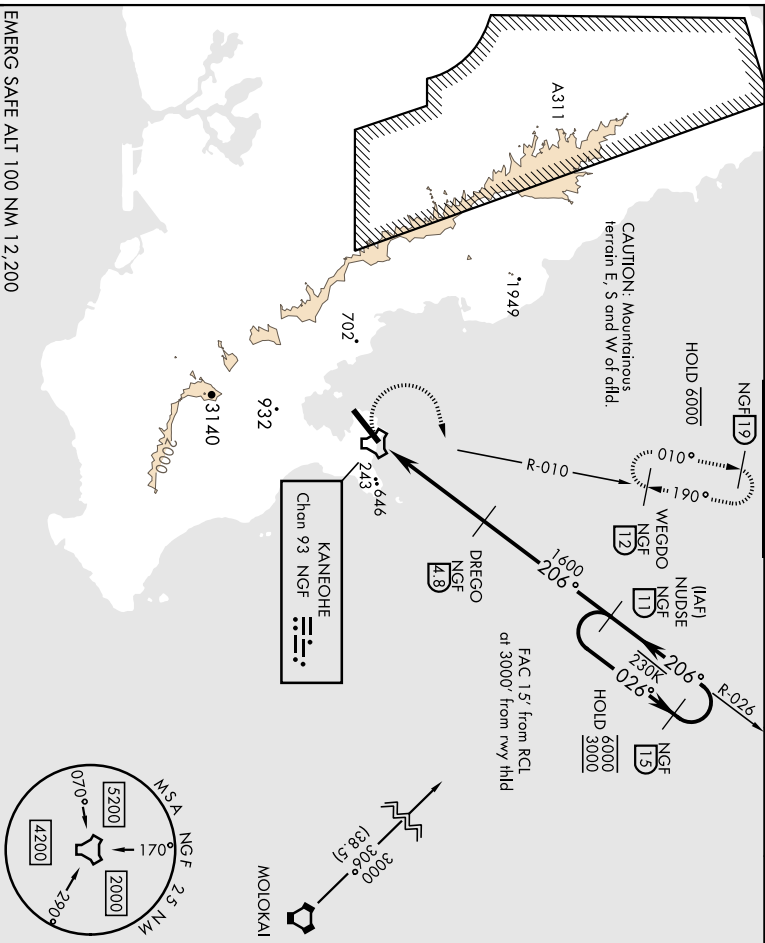
Chan 93

TACAN NGF Chan 93	APCH CRS TDZE	Rwy Idg	7772
206°		23	
	Appt Elev	23	

* Circling not authorized SE of Rwy 4-22.

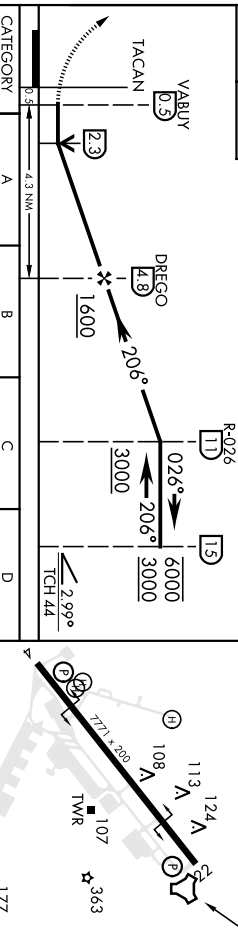
MISSED APPROACH: Climbing right turn to 4100, intercept NGF TACAN R-010 and proceed direct WEGDO. Continue climb-in-hold to 4100.

ATIS	APP/DEP CON	TOWER	GND CON	CLNC DEL	ASR / PAR
284.5	125.0 263.5	120.7 (CTAF) 360.2	382.8	294.7	

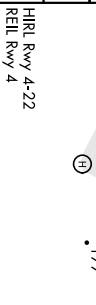


EMERG SAFE ALT 100 NM 12,200

4100	WEGDO	TA 18,000	ELEV	23	TDZE	23
NGF R-010	NGF 12					



CATEGORY	A	B	C	D
S-22	800-1 777 (800-1)	800-1½ 777 (800-1½)	800-2½ 777 (800-2½)	
CIRCLING*	800-1 777 (800-1)	800-1¼ 777 (800-1¼)	1020-3 997 (1000-3)	NOT AUTHORIZED



MOKAPU POINT, OAHU I, HAWAII

21° 27' N-157° 46' W

KANEHOE BAY MCAS (PHNG)

Amch 3 12AUG21

TACAN Z RWY 22