

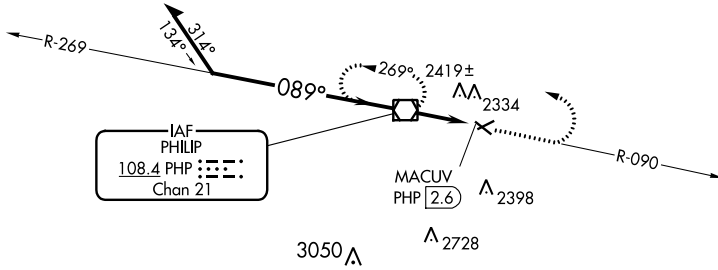
VOR/DME PHP <b>108.4</b> Chan <b>21</b>	APP CRS <b>089°</b>	Rwy Idg TDZE Apt Elev <b>N/A</b> <b>N/A</b> <b>2209</b>
---	------------------------	--

# VOR-A PHILIP (PHP)

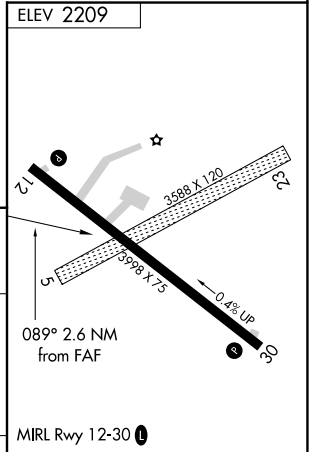
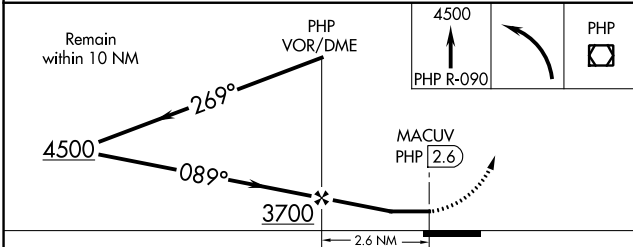
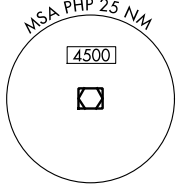
**⚠** Circling to Rwy 12-30 NA at night. When local altimeter setting not received, use Pierre Rgnl altimeter setting and increase all MDA 220 feet, and increase Circling Cat C visibility ¾ mile.

**⚠** MISSED APPROACH: Climb to 4500 on PHP VOR/DME R-090, then left turn direct PHP VOR/DME and hold.

ASOS <b>118.375</b>	DENVER CENTER <b>127.95 338.2</b>	UNICOM <b>122.8 (CTAF)</b> <b>0</b>
------------------------	--------------------------------------	--



IAF  
PHILIP  
108.4 PHP  
Chan 21



CATEGORY	FAF to MAP 2.6 NM				
	A	B	C	D	
CIRCLING	2720-1 511 (600-1)	2760-1 551 (600-1)	2840-1¾ 631 (700-1¾)	NA	
	Knots	60	90	120	150
Min:Sec	2:36	1:44	1:18	1:02	0:52

NC-1, 22 FEB 2024 to 21 MAR 2024

NC-1, 22 FEB 2024 to 21 MAR 2024