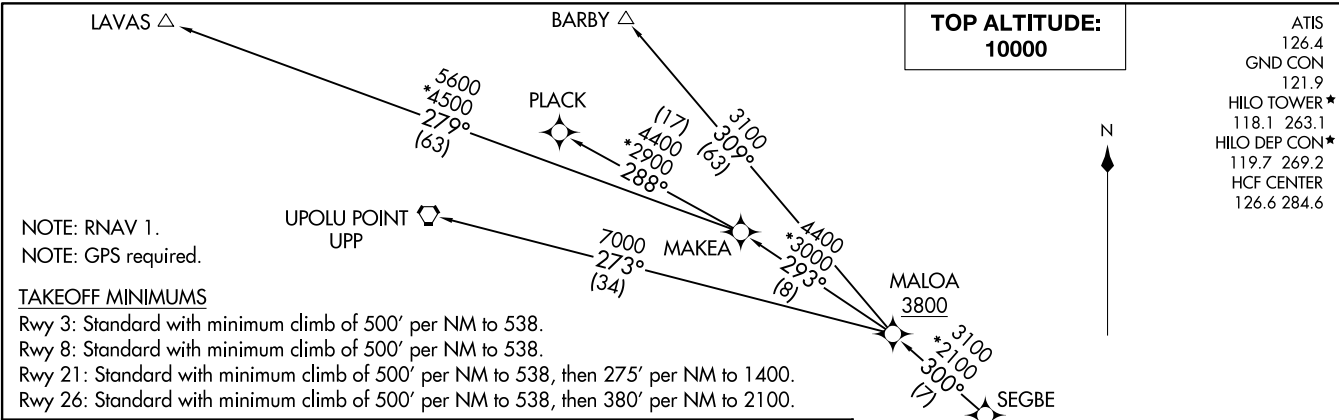


PPKEO ONE DEPARTURE (RNAV)
(PPKEO1.PPKEO) 25FEB21

(PPKEO1.PPKEO) 22195
PPKEO ONE DEPARTURE (RNAV)

**TOP ALTITUDE:
10000**

ATIS 126.4
GND CON 121.9
HILO TOWER* 118.1 263.1
HILO DEP CON* 119.7 269.2
HCF CENTER 126.6 284.6



NOTE: RNAV 1.
NOTE: GPS required.

TAKEOFF MINIMUMS

- Rwy 3: Standard with minimum climb of 500' per NM to 538.
- Rwy 8: Standard with minimum climb of 500' per NM to 538.
- Rwy 21: Standard with minimum climb of 500' per NM to 538, then 275' per NM to 1400.
- Rwy 26: Standard with minimum climb of 500' per NM to 538, then 380' per NM to 2100.

DEPARTURE ROUTE DESCRIPTION

TAKEOFF RUNWAY 3: Climb on heading 030° to 538, then left turn direct PPKEO, thence

TAKEOFF RUNWAY 8: Climb on heading 079° to 538, then left turn direct PPKEO, thence

TAKEOFF RUNWAY 21: Climb on heading 210° to intercept course 124° to cross SLPAH at or above 2000, then on track 040° to cross ONOME at or above 3000, at or below 230K, then on track 320° to PPKEO, thence

TAKEOFF RUNWAY 26: Climb on heading 259° to 538, then right turn direct PPKEO, thence

. . . . on (transition) maintain 10000 or lower filed altitude, expect filed altitude 5 minutes after departure.

BARBY TRANSITION (PPKEO1.BARBY)
LAVAS TRANSITION (PPKEO1.LAVAS)
PLACK TRANSITION (PPKEO1.PLACK)
UPOLO POINT TRANSITION (PPKEO1.UPP)

HILO INTL (ITTO)(PHTO)
HILO, HAWAII

AL-756 (FAA)

HILO INTL (ITTO)(PHTO)
HILO, HAWAII

NOTE: Chart not to scale.