

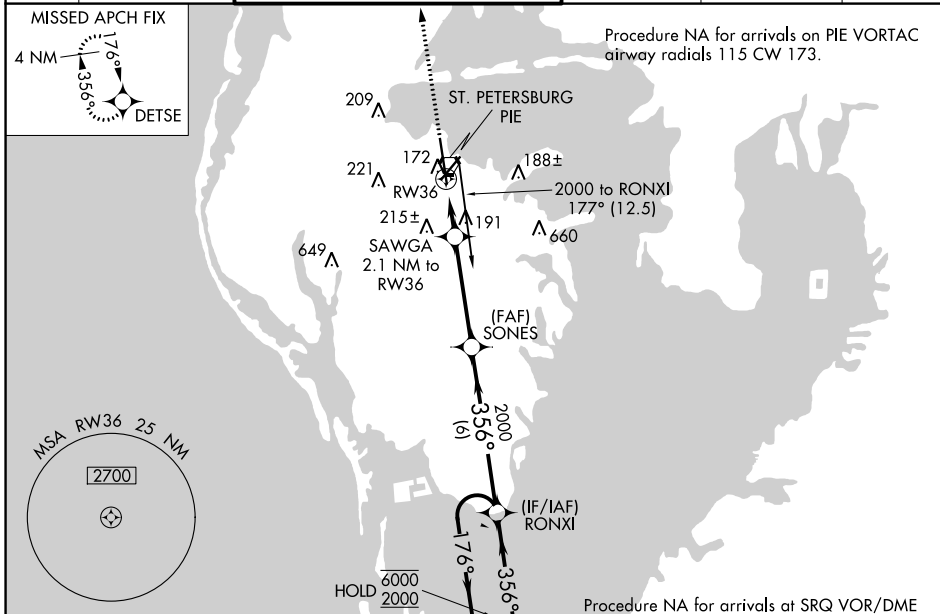
WAAS CH <b>65739</b> <b>W36A</b>	APP CRS <b>356°</b>	Rwy Idg <b>8720</b> TDZE <b>10</b> Apt Elev <b>11</b>
--	------------------------	---

# RNAV (GPS) RWY 36

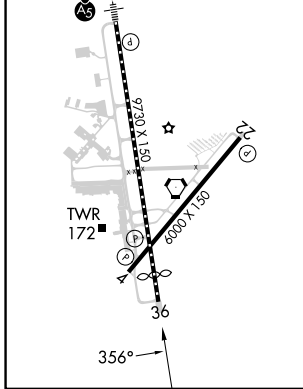
ST PETE-CLEARWATER INTL (PIE)

RNP APCH - GPS		<p><b>⚠</b> Circling to Rwy 22 NA at night. For uncompensated Baro-VNAV systems, LNAV/VNAV NA below 3°C or above 54°C.</p>		<p>MISSED APPROACH: Climb to 2600 direct DETSE and hold.</p>	
----------------	--	--	--	--	--

ATIS <b>134.5</b>	TAMPA APP CON <b>125.3 316.05</b>	ST PETERSBURG-CLEARWATER TOWER ★ <b>118.3 (CTAF) 0 257.8</b>	GND CON <b>121.9 348.6</b>	CLNC DEL <b>120.6 350.2</b>	UNICOM <b>122.95</b>
----------------------	--------------------------------------	---	-------------------------------	--------------------------------	-------------------------



ELEV 11	<b>D</b>	TDZE 10
TDZ/CL Rwy 18 <b>Ⓛ</b> HIRL Rwy 18-36 <b>Ⓛ</b> MIRL Rwy 4-22 <b>Ⓛ</b> REIL Rwys 4 and 22		



2600 DETSE	VGS and RNAV glidepath not coincident (VGS Angle 3.00/TCH 76).		
↑	SAWGA 2.1 NM to RW36	SONES 2000	RONXI 4 NM Holding Pattern
↙	1.2 NM to RW36	356°	176° 6000
↘	720	2000	2000
↔	1.2 NM	0.9	4 NM
↔	B		C
CATEGORY	A	D	
LPV DA	210/40 200 (200-¾)		
LNAV/VNAV DA	300/45 290 (300-¾)		
LNAV MDA	460/55	450 (500-1)	460-1⅓ 450 (500-1⅓)
<b>C</b> CIRCLING	520-1	509 (600-1)	600-1½ 620-2 589 (600-1½) 609 (700-2)

SE-3, 22 FEB 2024 to 21 MAR 2024

SE-3, 22 FEB 2024 to 21 MAR 2024