

WAAS CH 58326 W11A	APP CRS 110°	Rwy Idg TDZE Apt Elev	8900 7096 7096
--	------------------------	-----------------------------	---

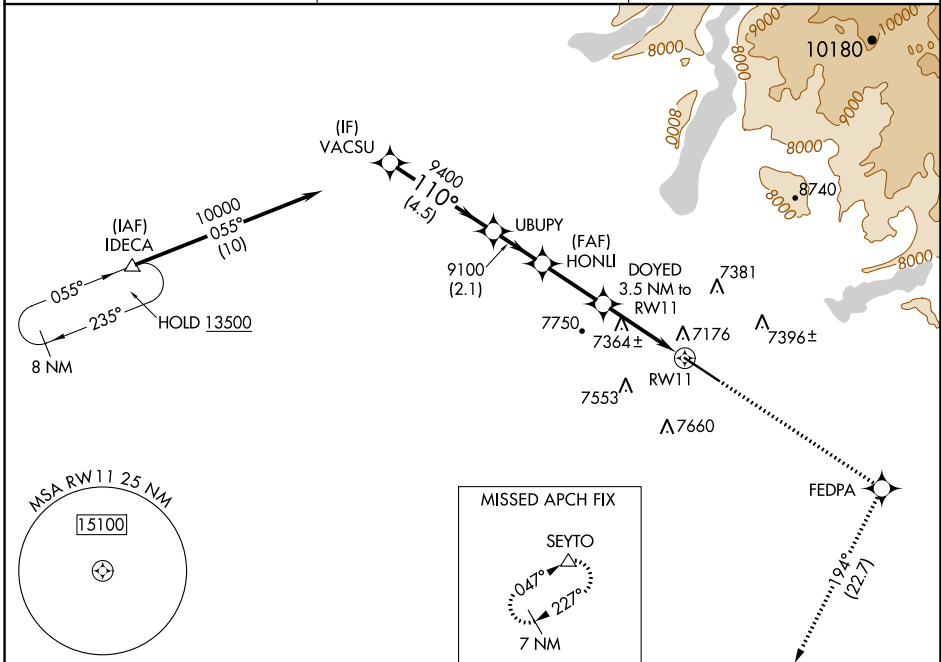
RNAV (GPS) RWY 11

RALPH WENZ FLD (PNA)

▼ Baro-VNAV NA. When local altimeter setting not received, use Big Piney altimeter setting and increase LPV DA to 7404 feet and all visibilities ¼ SM; increase LNAV/VNAV DA to 7413 feet and all visibilities ¼ SM; increase all MDA 60 feet and LNAV Cat C/D visibility ¼ SM. Circling NA south of Rwy 11/29. DME/DME RNP-0.3 NA. VDP NA with Big Piney altimeter setting.

ODALS MISSED APPROACH: Climb to 10000 direct FEDPA and on track 194° to SEYTO and hold.

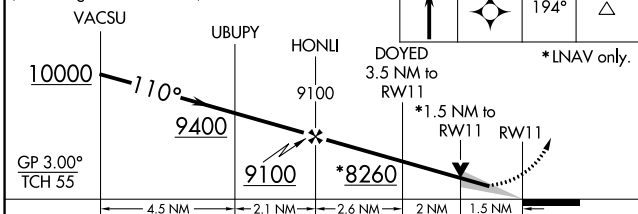
AWOS-3 118.325	SALT LAKE CENTER 128.35 239.25	UNICOM 122.8 (CTAF)
--------------------------	--	-------------------------------



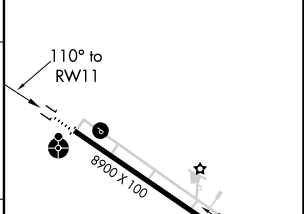
NW-1, 22 FEB 2024 to 21 MAR 2024

NW-1, 22 FEB 2024 to 21 MAR 2024

VGSI and RNAV glidepath not coincident (VGSI Angle 2.83/TCH 40).



ELEV 7096	TDZE 7096
-----------	-----------



CATEGORY	A	B	C	D
LPV DA		7346-¾	250 (300-¾)	
LNAV/VNAV DA		7355-¾	259 (300-¾)	
LNAV MDA	7620-1	524 (600-1)	7620-1½	524 (600-1½)
CIRCLING	7640-1	544 (600-1)	7840-2¼ 744 (800-2¼)	7980-3 884 (900-3)

