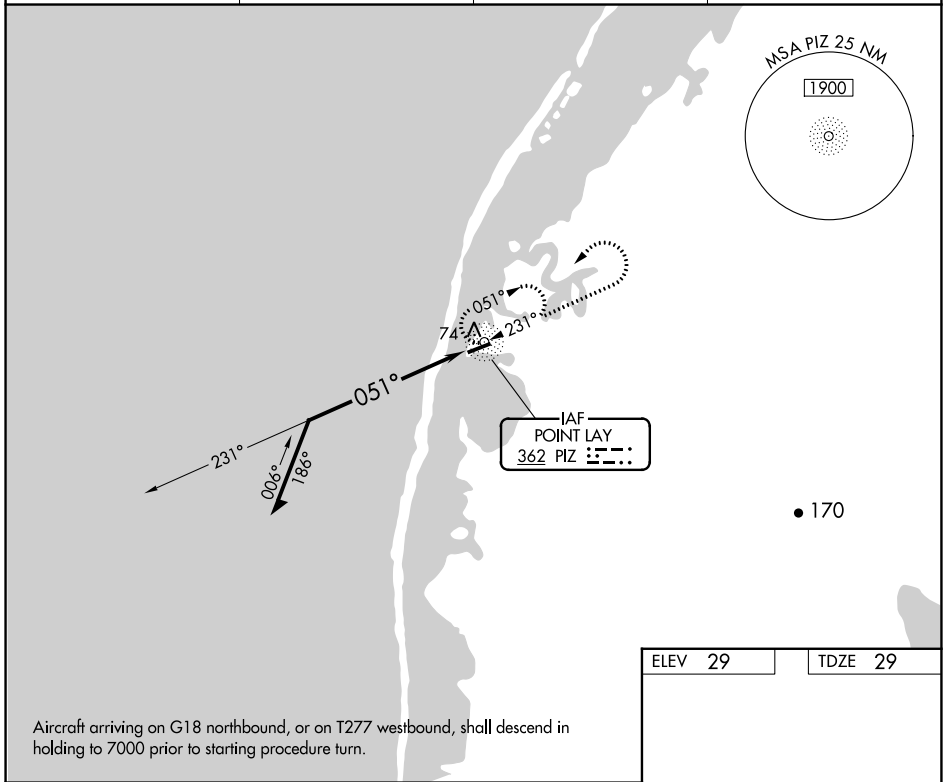


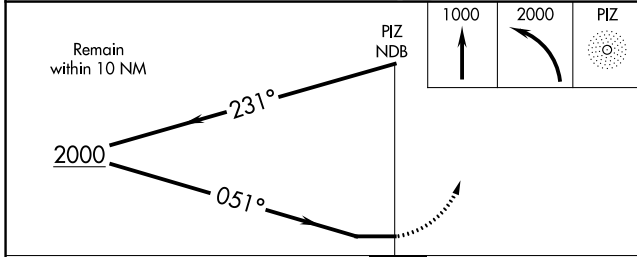
NDB PIZ 362	APP CRS 051°	Rwy Idg 4500 TDZE 29 Apt Elev 29
-----------------------	------------------------	---

NDB RWY 5
POINT LAY LRRS (PIZ) (PPIZ)

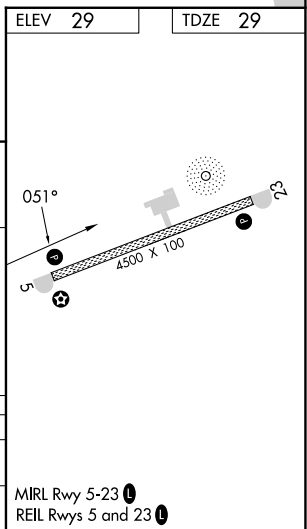
-33°C		MISSED APPROACH: Climb to 1000, then climbing left turn to 2000 direct PIZ NDB and hold.	
AWOS-3P 135.65	ANCHORAGE CENTER 119.65 363.25	BARROW RADIO 122.4	CTAF 122.8



Aircraft arriving on G18 northbound, or on T277 westbound, shall descend in holding to 7000 prior to starting procedure turn.



CATEGORY	A	B	C	D
S-5	500-1 471 (500-1)		500-1 ¼ 471 (500-1 ¼)	NA
CIRCLING	500-1 471 (500-1)		500-1 ½ 471 (500-1 ½)	NA



MIRL Rwy 5-23
REIL Rwys 5 and 23

AK, 25 JAN 2024 to 21 MAR 2024

AK, 25 JAN 2024 to 21 MAR 2024

APP CRS	Rwy Idg	4500
234°	TDZE	24
	Apt Elev	29

RNAV (GPS) RWY 23

POINT LAY LRRS (PIZ)(PPIZ)

33 -33°C
DME/DME RNP- 0.3 NA. When local altimeter setting not received, procedure NA.

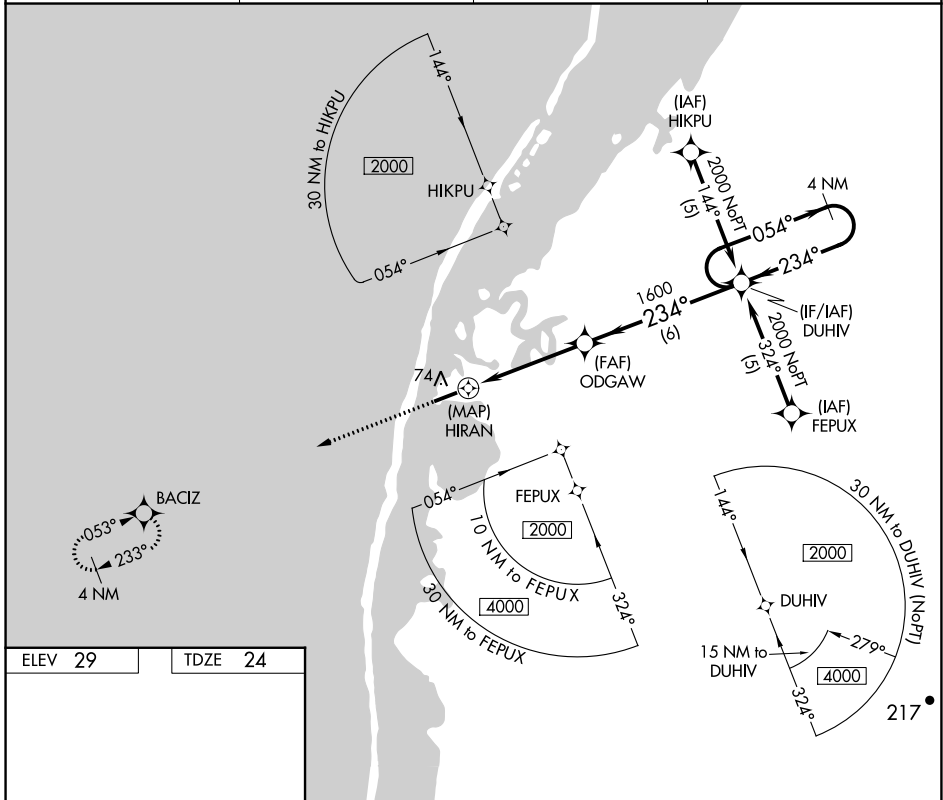
MISSED APPROACH: Climb to 2000 direct BACIZ and hold.

AWOS-3P
135.65

ANCHORAGE CENTER
119.65 363.25

BARROW RADIO
122.4

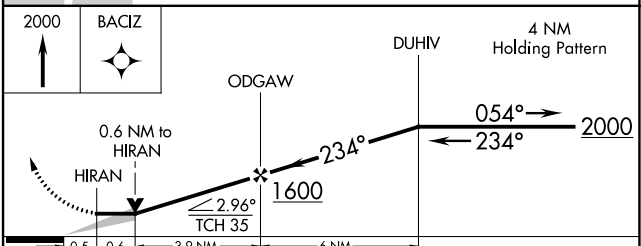
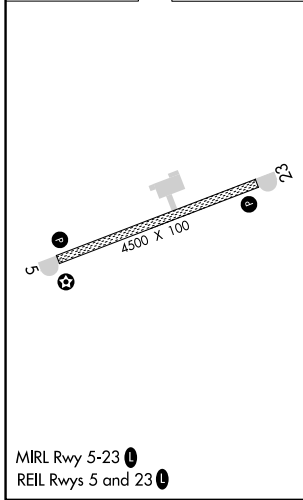
CTAF
122.8



AK, 25 JAN 2024 to 21 MAR 2024

AK, 25 JAN 2024 to 21 MAR 2024

ELEV 29	TDZE 24
---------	---------



CATEGORY	A	B	C	D
LNAV MDA	400-1 376 (400-1)			NA
CIRCLING	440-1 411 (500-1)	480-1 451 (500-1)	480-1½ 451 (500-1½)	NA

APP CRS	Rwy Idg	4500
053°	TDZE	29
	Apt Elev	29

RNAV (GPS) RWY 5

POINT LAY LRRS (PIZ)(PPIZ)

33 -33°C DME/DME RNP- 0.3 NA. When local altimeter setting not received, procedure NA.

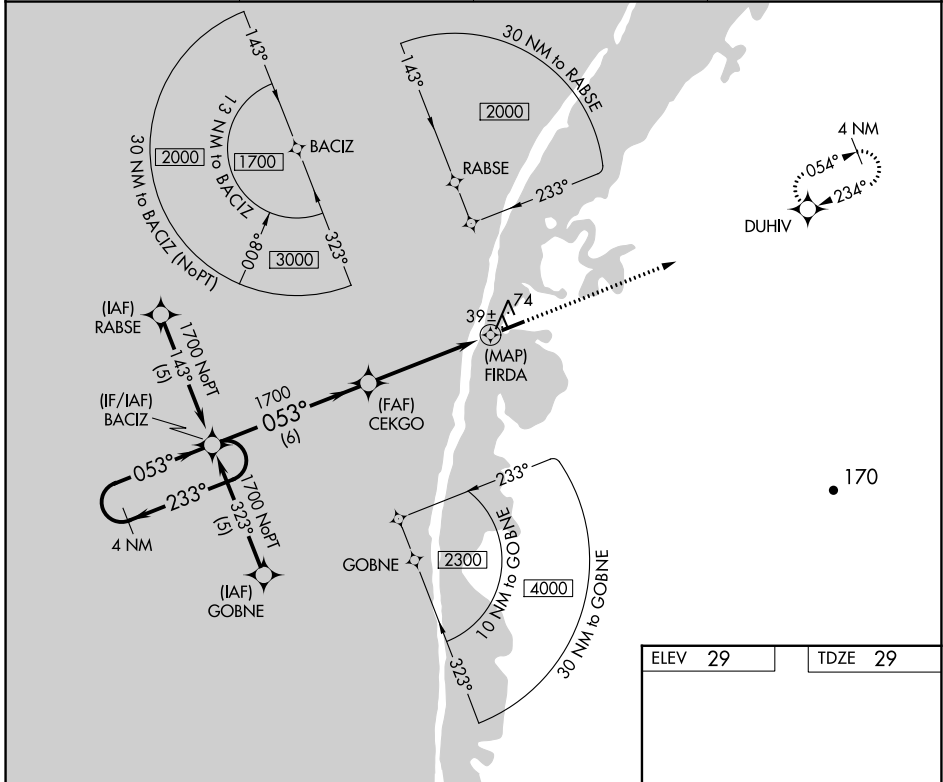
MISSED APPROACH: Climb to 2000 direct DUHIV and hold.

AWOS-3P
135.65

ANCHORAGE CENTER
119.65 363.25

BARROW RADIO
122.4

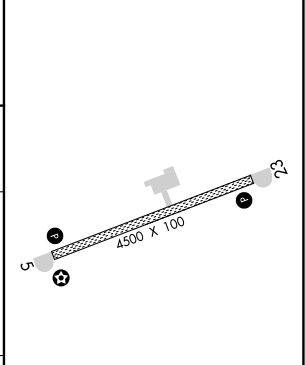
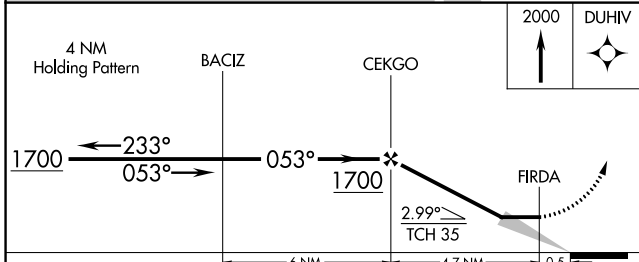
CTAF
122.8



AK, 25 JAN 2024 to 21 MAR 2024

AK, 25 JAN 2024 to 21 MAR 2024

ELEV	29	TDZE	29
------	-----------	------	-----------



CATEGORY	A	B	C	D
LNVA MDA	380-1	351 (400-1)	380-1¼ 351 (400-1¼)	NA
CIRCLING	440-1 411 (500-1)	480-1 451 (500-1)	480-1½ 451 (500-1½)	NA

MIRL Rwy 5-23
REIL Rwys 5 and 23