

RNAV (GPS) RWY 15R

APCH CRS	Rwy Idg	8352
145°	TDZE	761
	Arprt Elev	761

AL-341 [USAF]

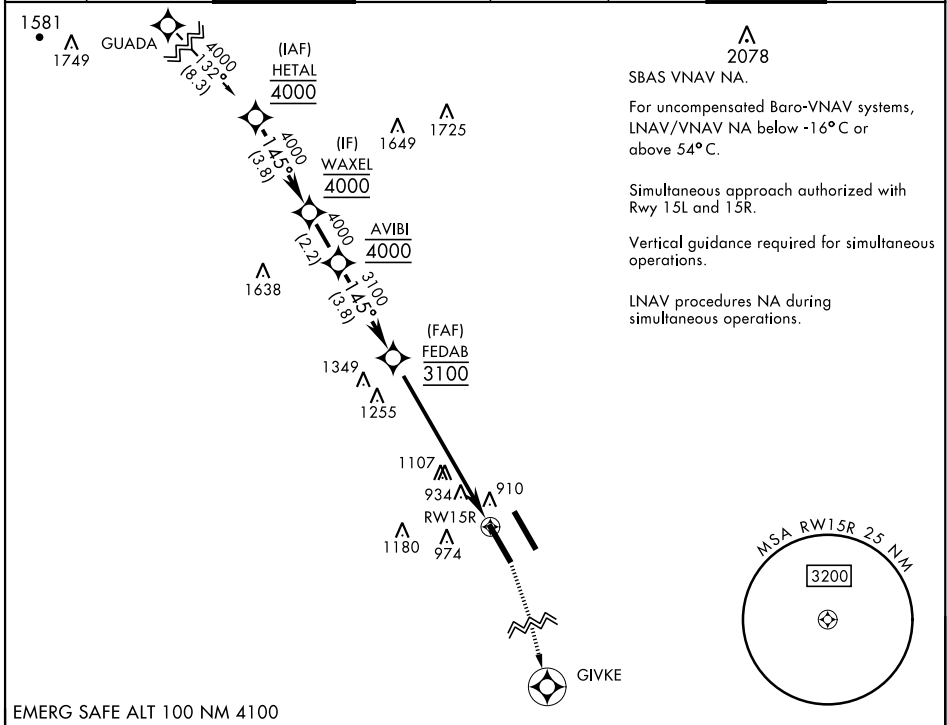
RANDOLPH AFB (KRND)

RNP APCH - GPS

* Circling not authorized NE of Rwy 15R-33L.

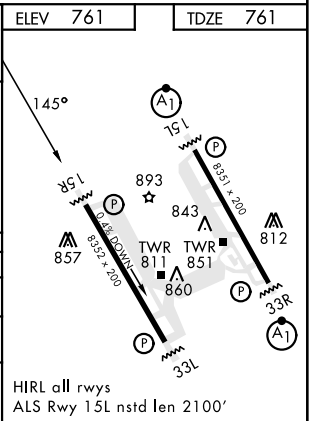
MISSED APPROACH: Climb to 1600 then climbing right turn to 3000 direct GIVKE. Expect ATC instructions.

ATIS ★	SAN ANTONIO APP CON	TOWER ★	GND CON	CLNC DEL (RWY 15L-33R)	HANGOVER ATIS ★	HANGOVER TOWER ★	HANGOVER GND CON
290.525	128.05 318.1	128.25 294.7	119.65 275.8	338.35	327.8	120.5 291.1	124.75 353.75



EMERG SAFE ALT 100 NM 4100

			1600	3000	GIVKE	ELEV 761	TDZE 761
	HETAL	WAXEL	AVIBI	FEDAB			
	4000	4000	4000	3100			
	GP 3.00°						
	TCH 47						
					7.2 NM		
CATEGORY	A	B	C	D	E		
LNAV/VNAV DA	1206-1¾		445	(500-1¾)			
LNAV MDA	1520/55 759 (800-1)	1520-1¼ 759 (800-1¼)	1520-2	759 (800-2)			
CIRCLING*	1520-1 759 (800-1)	1520-1¼ 759 (800-1¼)	1520-2¼ 759 (800-2¼)	1800-3	1039 (1100-3)		
						HIRL all rwys	ALS Rwy 15L nstd len 2100'



RNAV (GPS) RWY 15R

SC-3, 22 FEB 2024 to 21 MAR 2024

SC-3, 22 FEB 2024 to 21 MAR 2024