

WAAS CH 93518 W16A	APP CRS 164°	Rwy Idg TDZE Apt Elev	5089 2433 2437
--	------------------------	-----------------------------	---

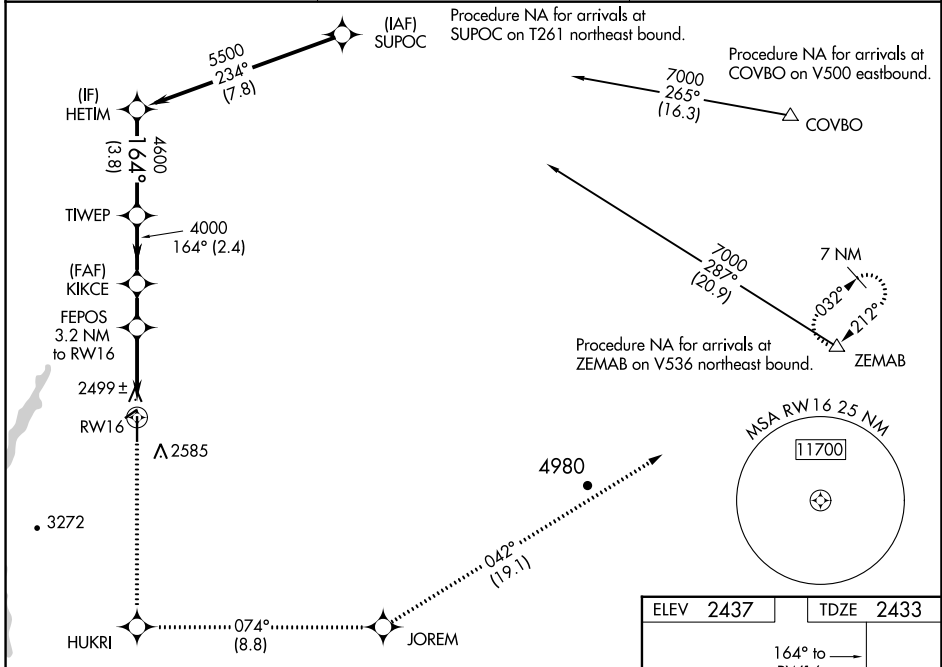
RNAV (GPS) RWY 16

MADRAS MUNI (S33)

Baro-VNAV NA when using Redmond altimeter setting. For uncompensated Baro-VNAV systems, LNAV/VNAV NA below -19°C (-2°F) or above 54°C (130°F). Rwy 16 helicopter visibility reduction below 3/4 SM NA. DME/DME RNP-0.3 NA. When local altimeter setting not received, use Redmond altimeter setting and increase all DA and MDA 580 feet; increase LPV all Cats visibility 2 2/3 SM, LNAV/VNAV all Cats visibility 2 2/3 SM, LNAV and Circling Cat A visibility 1/4 SM, LNAV and Circling Cat B visibility 1/2 SM, and increase LNAV and Circling Cat C visibility 1 1/4 SM.

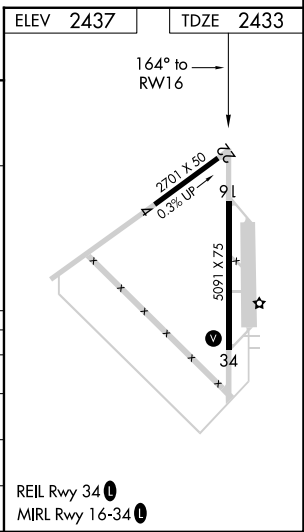
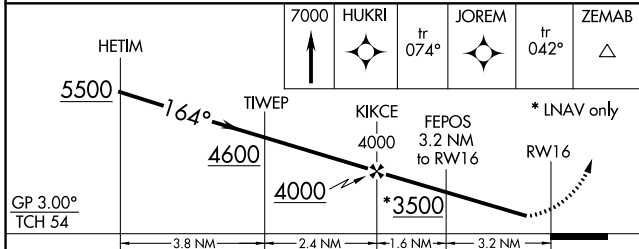
MISSED APPROACH: Climb to 7000 direct HUKRI and on track 074° to JOREM and on track 042° to ZEMAB and hold.

AWOS-3PT 132.425	SEATTLE CENTER 126.15 269.475	UNICOM 122.8 (CTAF)
----------------------------	---	-------------------------------



NW-1, 22 FEB 2024 to 21 MAR 2024

NW-1, 22 FEB 2024 to 21 MAR 2024



CATEGORY	A	B	C	D
LPV DA	2783-1 1/8	350 (400-1 1/8)		NA
LNAV/VNAV DA	2843-1 3/8	410 (500-1 3/8)		NA
LNAV MDA	3040-1	607 (700-1)	3040-1 3/4 607 (700-1 3/4)	NA
CIRCLING	3040-1	603 (700-1)	3040-1 3/4 603 (700-1 3/4)	NA

WAAS CH 60930 W34A	APP CRS 344°	Rwy Idg TDZE 2438 Apt Elev 2438	5091 2438 2438
--	------------------------	---	---

RNAV (GPS) RWY 34

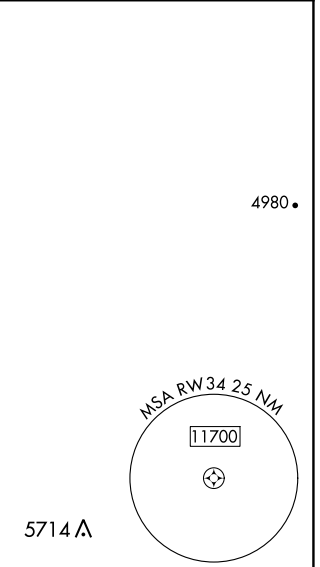
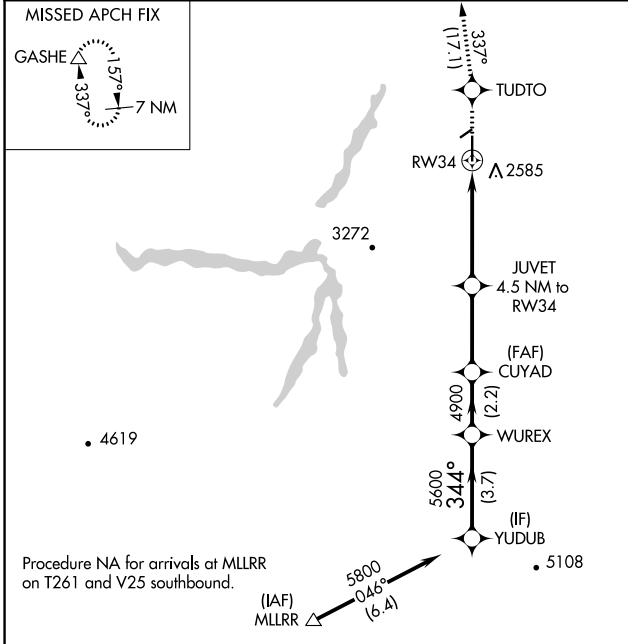
MADRAS MUNI (S33)

RNP APCH - GPS.

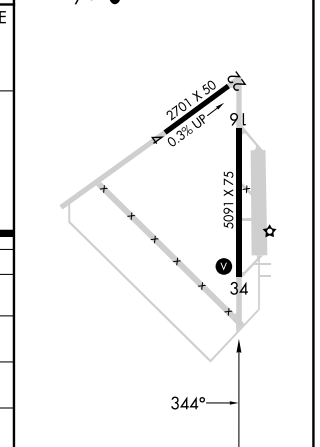
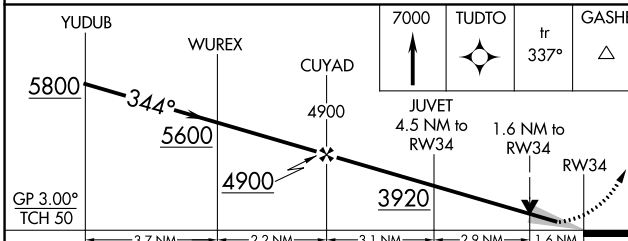
⚠ Circling Rwy 22 NA at night. Baro-VNAV and VDP NA when using Redmond altimeter setting. For uncompensated Baro-VNAV systems, LNAV/VNAV NA below -19°C or above 54°C. When local altimeter setting not received, use Redmond altimeter setting and increase LPV DA to 2832 feet and all visibilities $\frac{3}{8}$ SM. Increase LNAV/VNAV DA to 2846 feet and all visibilities $\frac{1}{4}$ SM. Increase all MDAs 160 feet and LNAV visibility Cat C $\frac{3}{8}$ SM, and Circling visibility Cat C $\frac{3}{8}$ SM.

MISSED APPROACH: Climb to 7000 direct TUDTO and on track 337° to GASHE and hold, continue climb-in-hold to 7000.

AWOS-3PT 132.425	SEATTLE CENTER 126.15 269.475	UNICOM 122.8 (CTAF) ①
----------------------------	---	---------------------------------



ELEV 2438	TDZE 2438
MRL Rwy 16-34 ①	
REIL Rwy 34 ①	



CATEGORY	A	B	C	D
LPV DA	2688- $\frac{3}{4}$	250 (300- $\frac{3}{4}$)		NA
LNAV/VNAV DA	2702- $\frac{7}{8}$	264 (300- $\frac{7}{8}$)		NA
LNAV MDA	3000-1	562 (600-1)	3000-1 $\frac{1}{8}$ 562 (600-1 $\frac{1}{8}$)	NA
CIRCLING	3000-1 562 (600-1)	3020-1 582 (600-1)	3020-1 $\frac{1}{8}$ 582 (600-1 $\frac{1}{8}$)	NA

NW-1, 22 FEB 2024 to 21 MAR 2024

NW-1, 22 FEB 2024 to 21 MAR 2024