

(MARC'S, QERVO1) 25JAN24

QERVO ONE ARRIVAL (RNAV) Transition Routes

SAN ANTONIO, TEXAS

SAN ANTONIO APP CON
 127.1 269.1
 BAZ ATIS
 119.325
 KRND ATIS *
 290.525
 KSKF ATIS
 120.45 273.5
 SAT D-ATIS
 118.9
 SSF ATIS
 128.8

RNAV 1-DME/DME/IRU or GPS.
 RADAR required.

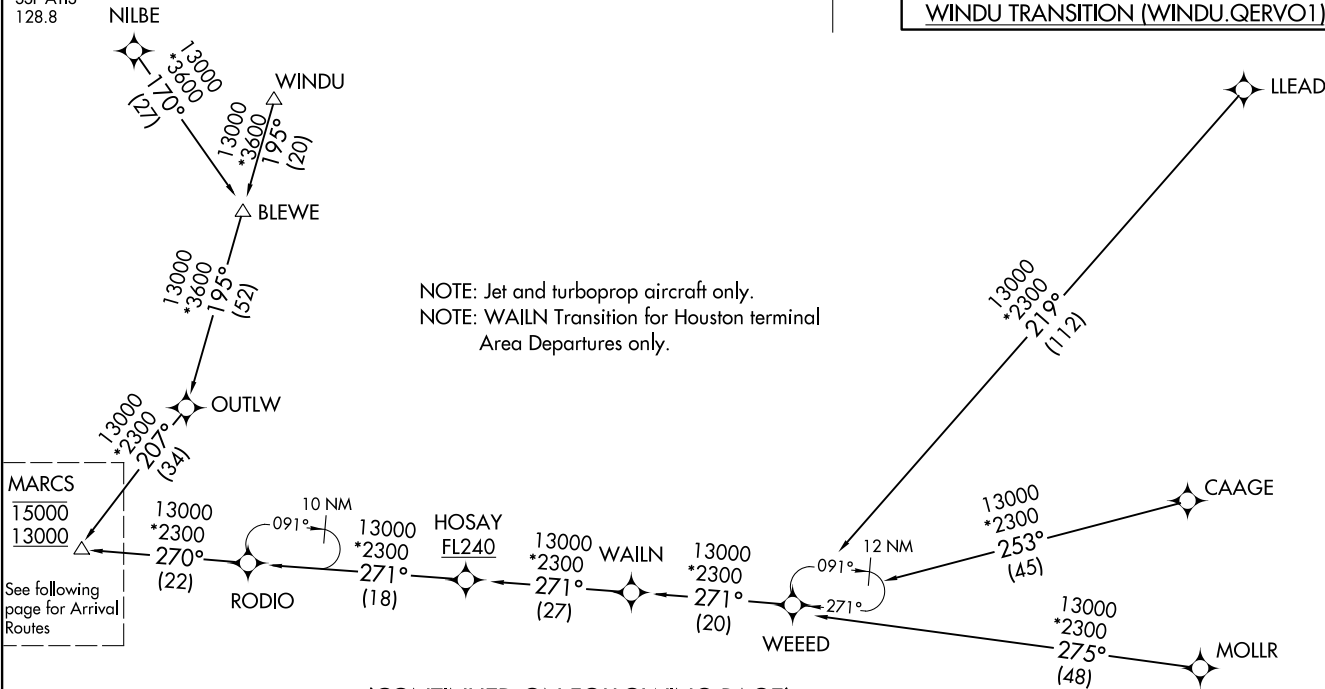


BLEWE TRANSITION (BLEWE.QERVO1)
 CAAGE TRANSITION (CAAGE.QERVO1)
 LLEAD TRANSITION (LLEAD.QERVO1)
 MOLLR TRANSITION (MOLLR.QERVO1)
 NILBE TRANSITION (NILBE.QERVO1)
 WAILN TRANSITION (WAILN.QERVO1)
 WINDU TRANSITION (WINDU.QERVO1)

(MARC'S, QERVO1) 24025

AL-369 (FAA)
 QERVO ONE ARRIVAL (RNAV) Transition Routes

SAN ANTONIO, TEXAS



NOTE: Jet and turboprop aircraft only.
 NOTE: WAILN Transition for Houston terminal Area Departures only.

MARC'S
 15000
 13000
 See following page for Arrival Routes

NOTE: Chart not to scale.

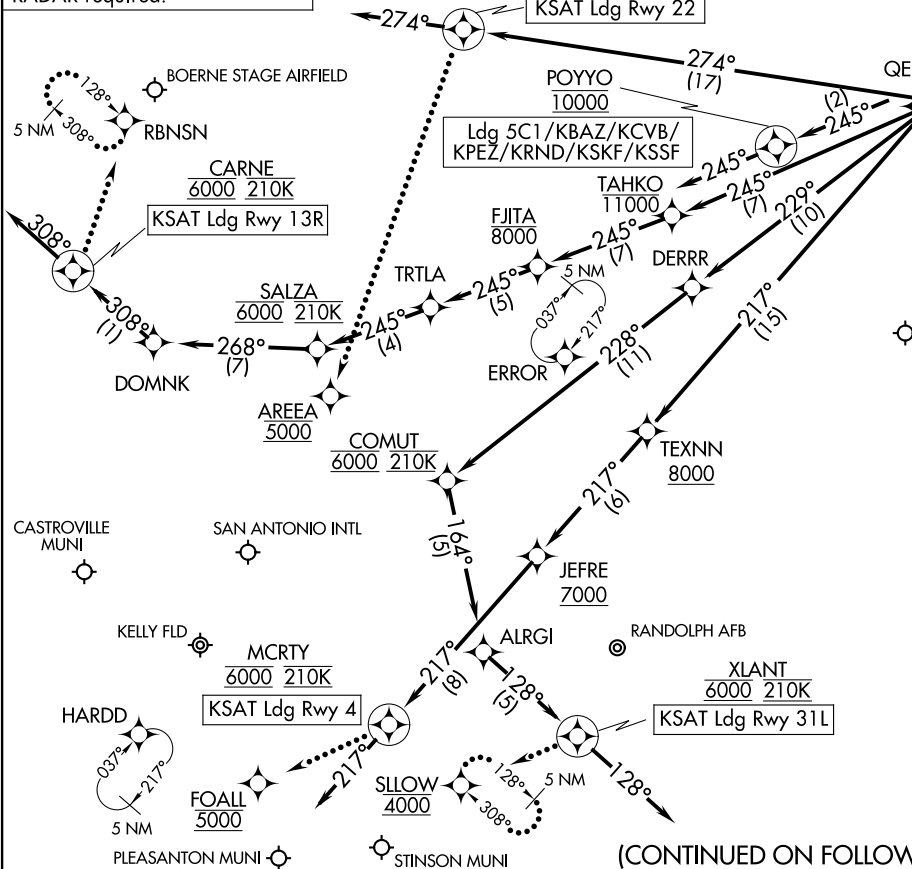
(CONTINUED ON FOLLOWING PAGE)

QERVO ONE ARRIVAL (RNAV) Arrival Routes
(MARC3, QERVO1) 25JAN24

QERVO ONE ARRIVAL (RNAV) Arrival Routes

SAN ANTONIO, TEXAS

RNAV 1-DME/DME/IRU or GPS.
RADAR required.



NOTE: Jet and turboprop aircraft only.
NOTE: WALLN Transition for Houston terminal Area Departures only.

NOTE: Chart not to scale.

(MARC3, QERVO1) 24025
QERVO ONE ARRIVAL (RNAV) Arrival Routes

AL-369 (FAA)

SAN ANTONIO, TEXAS

SAN ANTONIO APP CON
127.1 269.1
BAZ ATIS
119.325
KRND ATIS *
290.525
KSKF ATIS
120.45 273.5
SAT D-ATIS
118.9
SSF ATIS
128.8

