

WAAS CH <b>70546</b> <b>W16B</b>	APP CRS <b>164°</b>	Rwy Idg <b>12002</b> TDZE <b>4231</b> Apt Elev <b>4231</b>
--	------------------------	--

# RNAV (GPS) RWY 16L

SALT LAKE CITY INTL (SLC)

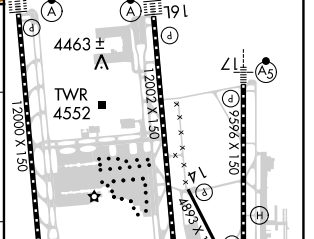
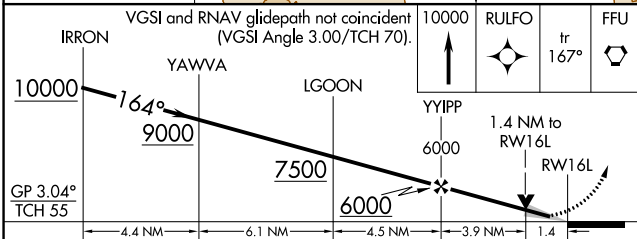
RNP APCH - GPS.		ALSF-2	MISSED APPROACH: Climb to 10000 direct RULFO and on track 167° to FFU VORTAC and hold.
<p>▼ LNAV procedure NA during simultaneous operations. Simultaneous approach authorized. Use of FD or AP required during simultaneous operations. For uncompensated Baro-VNAV systems, LNAV/VNAV NA below -10°C or above 45°C. For inop ALS, increase LPV Cat E visibility to RVR 4000, increase LNAV/VNAV Cat A visibility to RVR 4500, increase Cats C/D visibility to RVR 5500, increase Cat E visibility to 6000, and increase LNAV Cat E visibility to 1½ SM.</p>			

D-ATIS <b>124.75 125.625</b>	SALT LAKE CITY APP CON <b>125.7 284.6</b>	SALT LAKE CITY TOWER <b>119.05 257.8</b>	GND CON <b>123.775 348.6</b>	CLNC DEL <b>127.3 379.975</b>	CPDLC
---------------------------------	--	---	---------------------------------	----------------------------------	-------



MISSED APCH FIX	FAIRFIELD FFU	160°	340°	7 NM
-----------------	------------------	------	------	------

ELEV 4231	TDZE 4231
-----------	-----------



IRRON	YAWVA	LGOON	YYIPP	RULFO	FFU
10000	9000	7500	6000	4231	4231
GP 3.04° TCH 55					
4.4 NM		6.1 NM		3.9 NM	
CATEGORY	A	B	C	D	E
LPV DA	4431/18 200 (200-½)				
LNAV/VNAV DA	4537/24 306 (400-½)	4559/26 328 (400-½)	4574/30 343 (400-¾)	4593/35 362 (400-¾)	4634/40 403 (500-¾)
LNAV MDA	4760/24	529 (600-½)	4760/55 529 (600-1)		

HIRL all Rwys	TDZ/CL Rwys 16L, 16R, 17, 35, 34L, and 34R
---------------	--

SW-4, 22 FEB 2024 to 21 MAR 2024

SW-4, 22 FEB 2024 to 21 MAR 2024