

WAAS CH <b>86534</b> <b>W34A</b>	APP CRS <b>343°</b>	Rwy Idg TDZE Apt Elev	<b>4000</b> <b>739</b> <b>746</b>
--	------------------------	-----------------------------	---

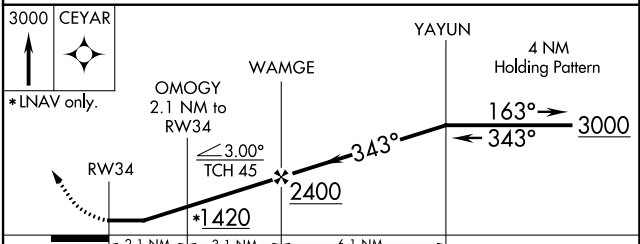
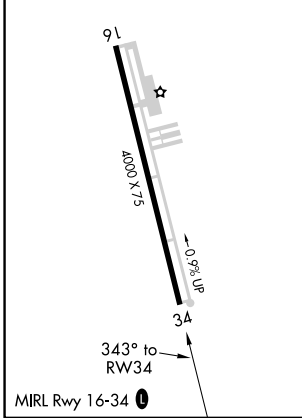
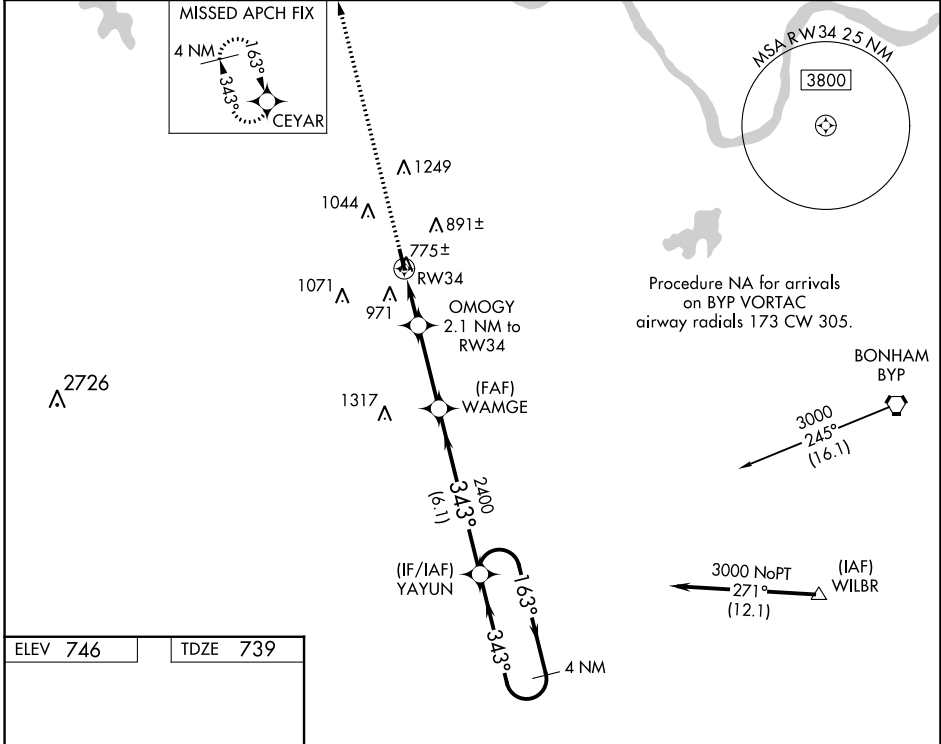
# RNAV (GPS) RWY 34

SHERMAN MUNI (SWI)

**NA** DME/DME RNP-0.3 NA. Use Sherman/Denison altimeter setting, if not received, use Dallas Love Fld altimeter setting and increase all MDA 140 feet; increase LP and LNAV Cat C visibility 3/8 mile, Circling Cat B visibility 1/4 mile and Cat C visibility 1/2 mile. Procedure NA at night. Helicopter visibility reduction below 1 SM NA.

**MISSED APPROACH:**  
Climb to 3000 direct CEYAR and hold.

FORT WORTH CENTER <b>124.75 323.0</b>	UNICOM <b>122.8 (CTAF) 0</b>
--	---------------------------------



CEYAR	↑	◆	YAYUN	4 NM Holding Pattern
*LNAV only.	OMOGY 2.1 NM to RW34	WAMGE	YAYUN	4 NM Holding Pattern
	2.1 NM	3.1 NM	6.1 NM	
CATEGORY	A	B	C	D
LP MDA	1060-1 321 (400-1)			NA
LNAV MDA	1100-1	361 (400-1)	1100-1 1/8 361 (400-1 1/8)	NA
<b>C</b> CIRCLING	1300-1 554 (600-1)	1420-1 674 (700-1)	1620-2 1/2 874 (900-2 1/2)	NA

SC-2, 22 FEB 2024 to 21 MAR 2024

SC-2, 22 FEB 2024 to 21 MAR 2024