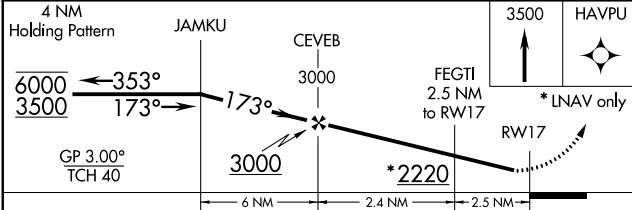
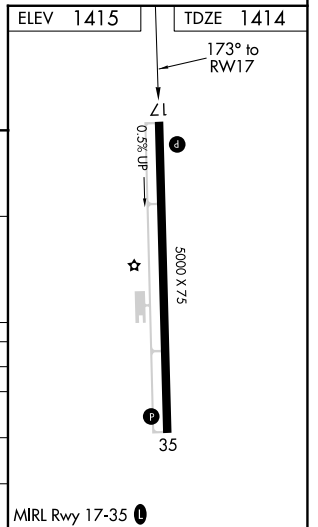
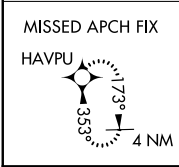
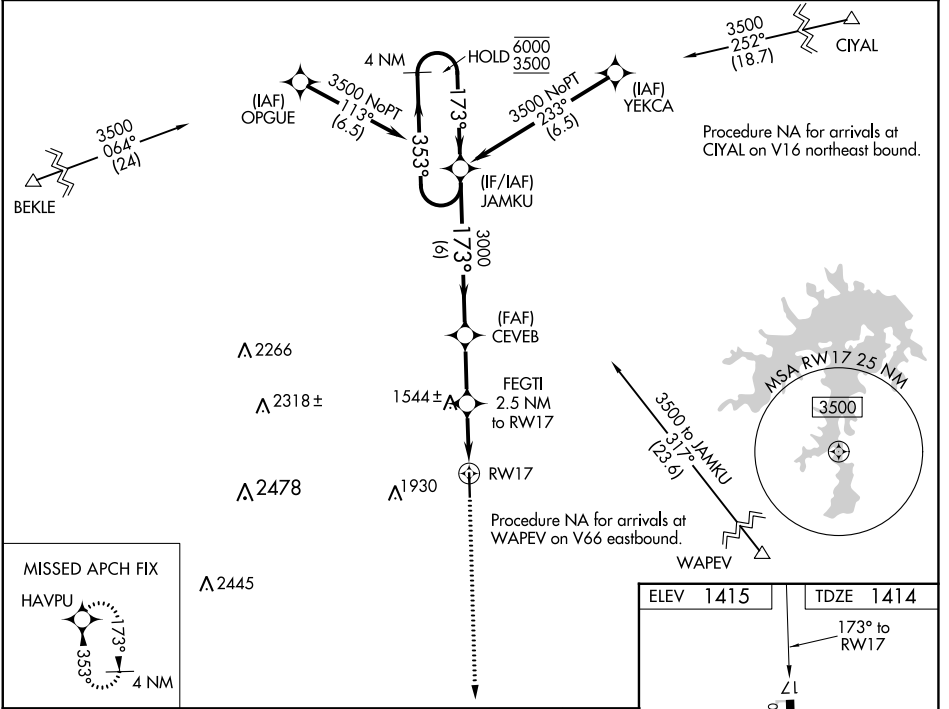


WAAS CH 90435 W17A	APP CRS 173°	Rwy Idg TDZE Apt Elev	5000 1414 1415
--	------------------------	-----------------------------	---

RNAV (GPS) RWY 17

ALBANY MUNI (T23)

RNP APCH.			MISSED APPROACH: Climb to 3500 direct HAVPU and hold.
<p>▲ NA Rwy 17 helicopter visibility reduction below 3/4 SM NA. Baro-VNAV NA. Use Breckenridge altimeter setting.</p>			
BKD AWOS-3 120.175	ABILENE APP CON 125.0 338.3	CTAF 122.9	123.5



CATEGORY	A	B	C	D
LPV DA	1727-1	313 (400-1)		NA
LNNAV/VNAV	1872-1 1/8	458 (500-1%)		NA
LNNAV MDA	1860-1	446 (500-1)	1860-1 3/8 446 (500-1%)	NA
CIRCLING	2000-1	585 (600-1)	2360-2 3/4 945 (1000-2 3/4)	NA

SC-2, 22 FEB 2024 to 21 MAR 2024

SC-2, 22 FEB 2024 to 21 MAR 2024

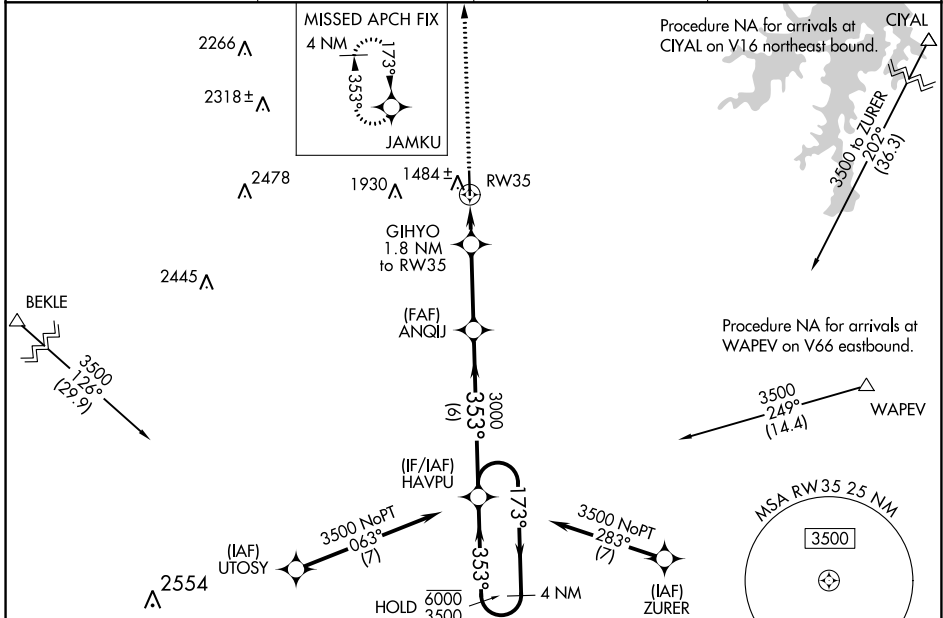
WAAS CH 65935 W35A	APP CRS 353°	Rwy Idg 5000
	TDZE 1415	
	Apt Elev 1415	

RNAV (GPS) RWY 35

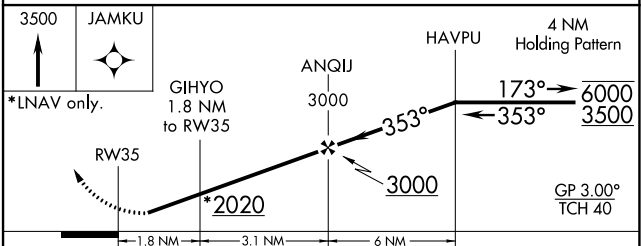
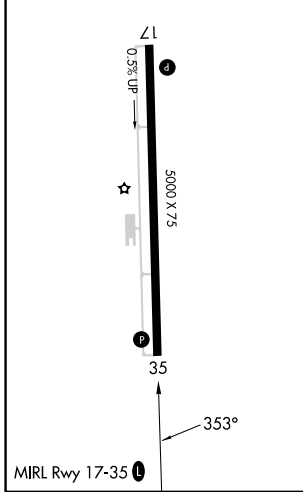
ALBANY MUNI (T23)

RNP APCH.			MISSED APPROACH: Climb to 3500 direct JAMKU and hold.
<p>▲ NA Rwy 35 helicopter visibility reduction below 3/4 SM NA. Baro-VNAV NA. Use Breckenridge altimeter setting.</p>			

BKD AWOS-3 120.175	ABILENE APP CON 125.0 338.3	CTAF 122.9	123.5
------------------------------	---------------------------------------	----------------------	--------------



ELEV 1415	TDZE 1415
------------------	------------------



CATEGORY	A	B	C	D
LPV DA		1728-1 313 (400-1)		NA
LNAV/VNAV DA		1728-1 313 (400-1)		NA
LNAV MDA	1800-1	385 (400-1)	1800-1 1/8 385 (400-1 1/8)	NA
<input checked="" type="checkbox"/> CIRCLING	2000-1	585 (600-1)	2360-2 3/4 945 (1000-2 3/4)	NA

SC-2, 22 FEB 2024 to 21 MAR 2024

SC-2, 22 FEB 2024 to 21 MAR 2024