

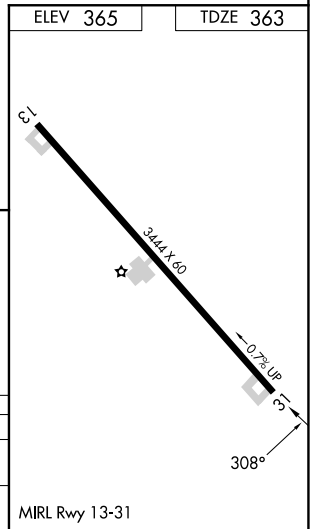
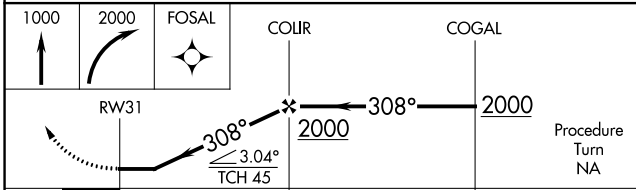
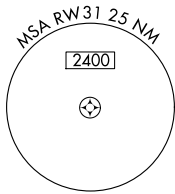
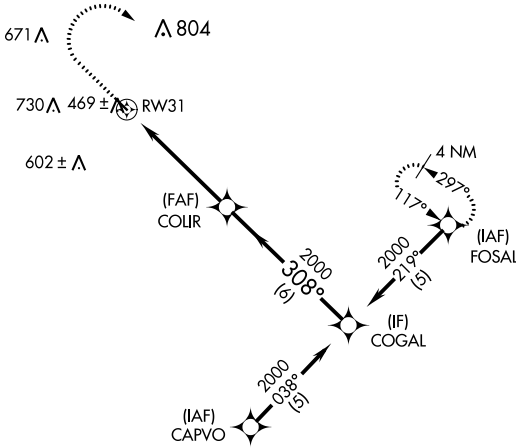
APP CRS	Rwy Idg	3444
308°	TDZE	363
	Apt Elev	365

RNAV (GPS) RWY 31

YOAKUM MUNI (T85)

RNP APCH-GPS.	MISSED APPROACH: Climb to 1000 then climbing right turn to 2000 direct FOSAL and hold.
▼ Use Victoria Rgnl altimeter setting. Procedure NA at night.	
▲ NA Rwy 31 helicopter visibility reduction below 3/4 SM NA.	

VCT ASOS 119.025	HOUSTON CENTER 132.8 343.7	CTAF 122.9
----------------------------	--------------------------------------	----------------------



CATEGORY	A	B	C	D
LNVA MDA	840-1	477 (500-1)	840-1 1/4 477 (500-1 1/4)	NA
CIRCLING	920-1	555 (600-1)	1200-2 1/2 835 (900-2 1/2)	NA

SC-3, 22 FEB 2024 to 21 MAR 2024

SC-3, 22 FEB 2024 to 21 MAR 2024