

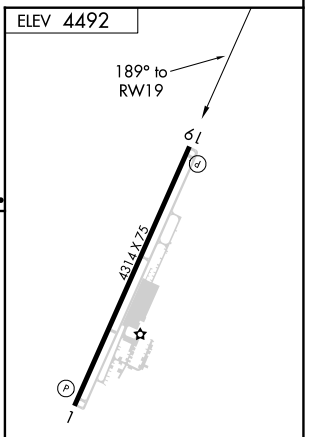
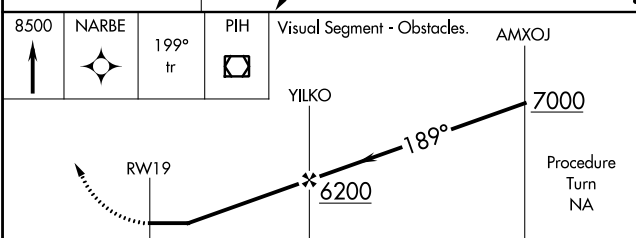
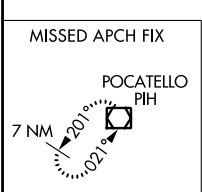
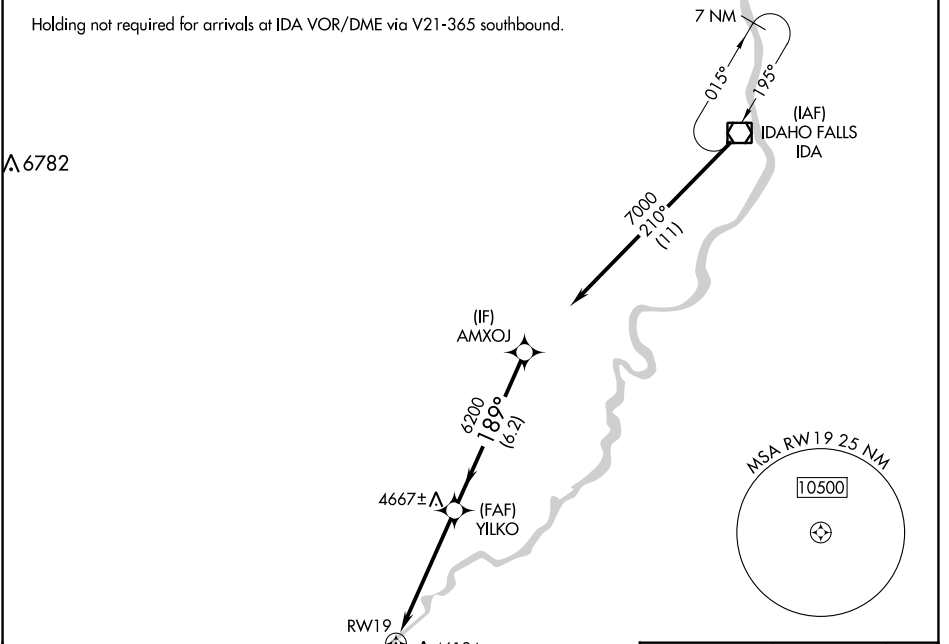
APP CRS	Rwy Idg	N/A
189°	TDZE	N/A
	Apt Elev	4492

RNAV (GPS)-A

MCCARLEY FLD (U02)

RNP APCH.	MISSED APPROACH: Climb to 8500 direct NARBE and on 199° track to PIH VOR/DME and hold.
▼ ▲ NA	Use Pocatello altimeter setting, when not received use Idaho Falls altimeter setting. Helicopter visibility reduction below 1 SM NA.

SALT LAKE CITY CENTER 128.35 239.25	UNICOM 122.8 (CTAF)
--	------------------------



CATEGORY	A	B	C	D
CIRCLING	5340-1¼ 848 (900-1¼)		5380-2¾ 888 (900-2¾)	5900-3 1408 (1500-3)

MIRL Rwy 1-19

NW-1, 27 JAN 2022 to 24 FEB 2022

NW-1, 27 JAN 2022 to 24 FEB 2022

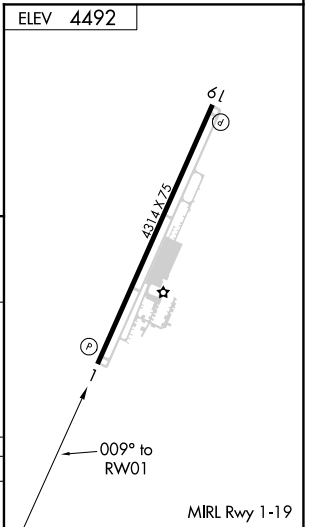
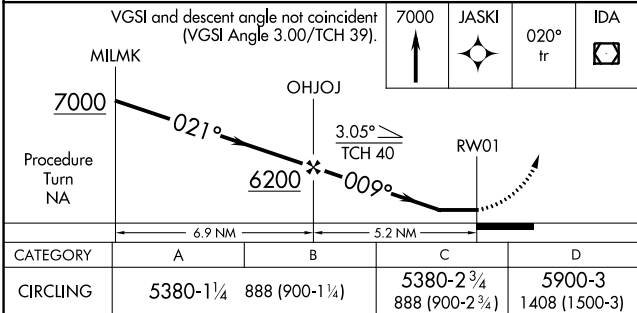
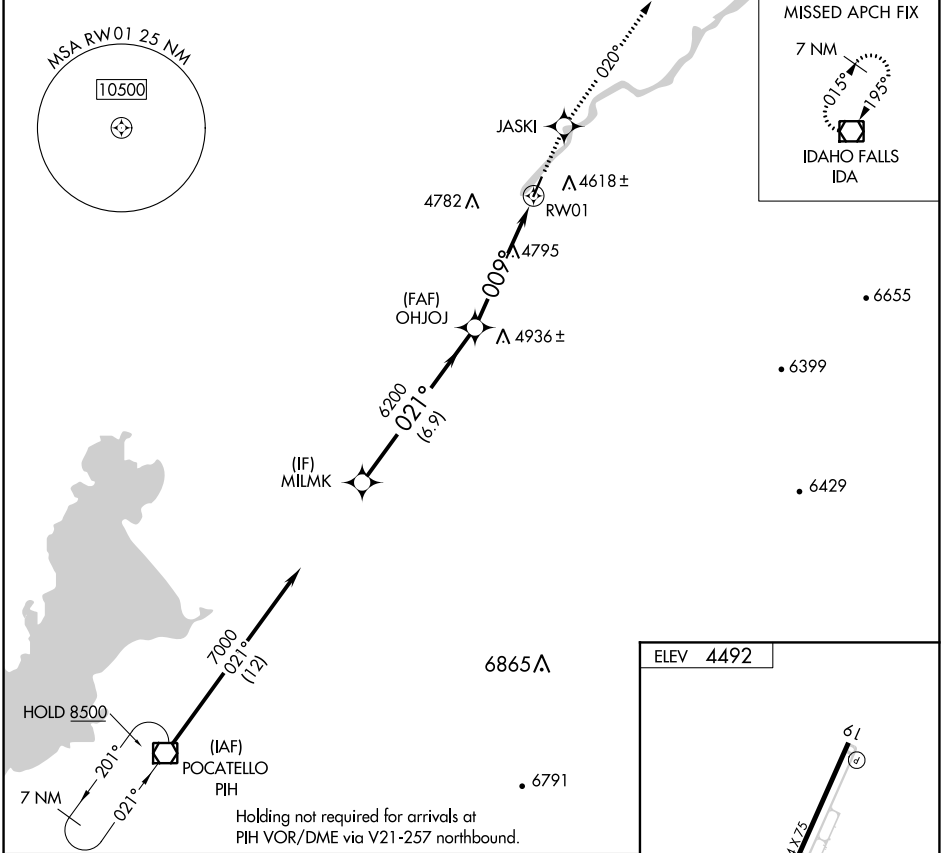
APP CRS 009°	Rwy Idg TDZE Apt Elev N/A N/A 4492
------------------------	--

RNAV (GPS)-B

MCCARLEY FLD (U02)

RNP APCH.	MISSED APPROACH: Climb to 7000 direct JASKI and on 020° track to IDA VOR/DME and hold.
▼ Use Pocatello altimeter setting, when not received use Idaho Falls altimeter setting. Helicopter visibility reduction below 1 SM NA.	

SALT LAKE CITY CENTER 128.35 239.25	UNICOM 122.8 (CTAF)
---	-------------------------------



NW-1, 27 JAN 2022 to 24 FEB 2022

NW-1, 27 JAN 2022 to 24 FEB 2022

VOR/DME PIH 112.6 Chan 73	APP CRS 016°	Rwy Idg TDZE Apt Elev N/A N/A 4492
---	------------------------	--

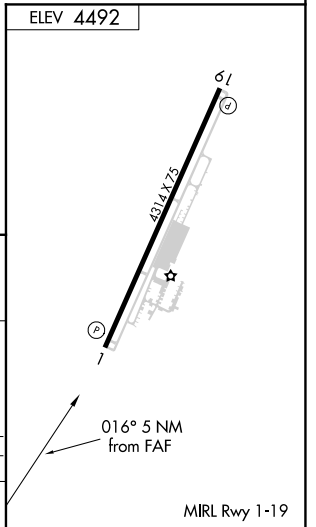
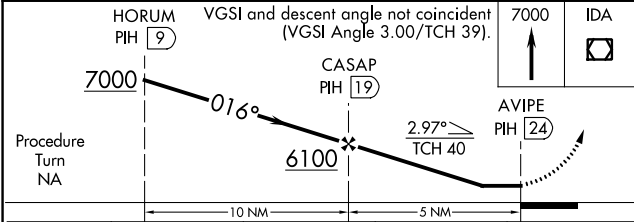
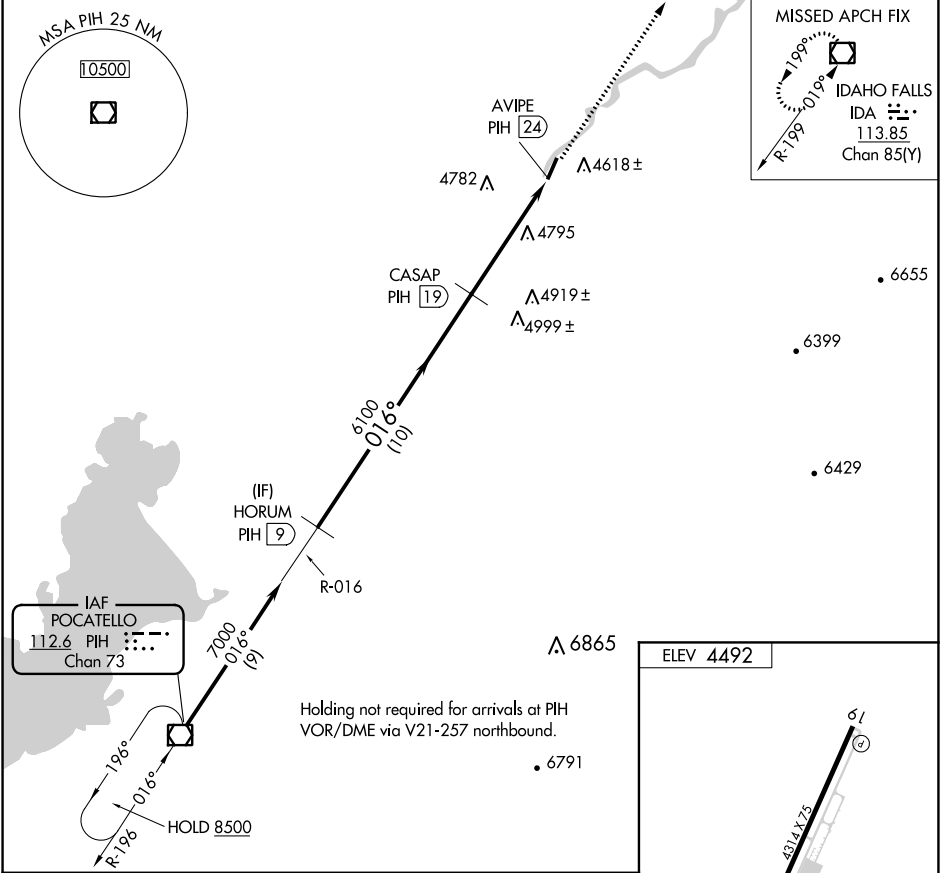
VOR/DME-C
MCCARLEY FLD (U02)

▲ NA Use Pocatello altimeter setting, when not received use Idaho Falls altimeter setting. Helicopter visibility reduction below 1 SM NA.

MISSED APPROACH: Climb to 7000 direct IDA VOR/DME and hold.

SALT LAKE CITY CENTER
128.35 239.25

UNICOM
122.8 (CTAF)



CATEGORY	A	B	C	D
CIRCLING	5460-1¼ 968 (1000-1¼)	5460-1½ 968 (1000-1½)	5460-3 968 (1000-3)	5900-3 1408 (1500-3)

NW-1, 27 JAN 2022 to 24 FEB 2022

NW-1, 27 JAN 2022 to 24 FEB 2022