

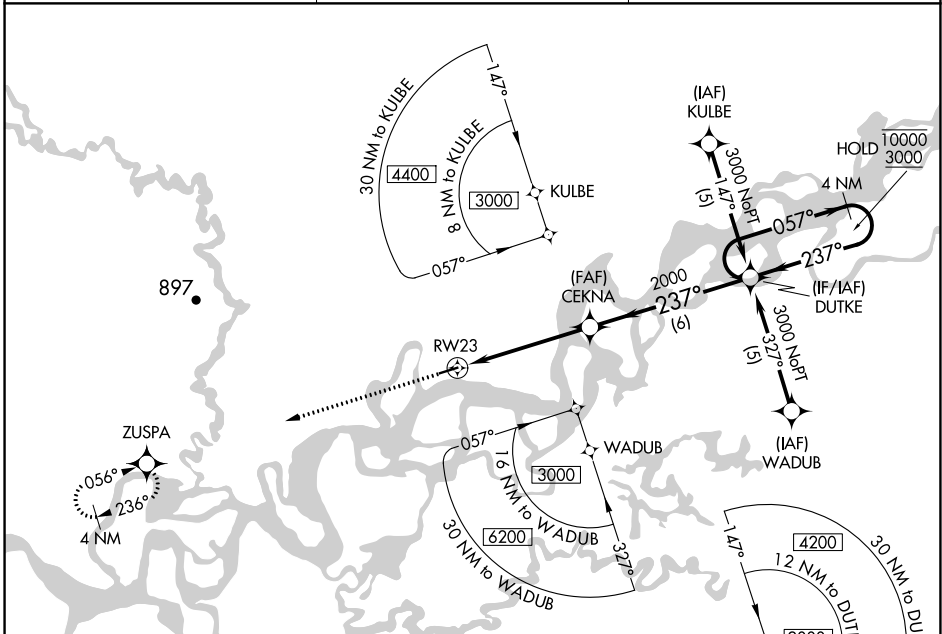
APP CRS	Rwy Idg	3934
237°	TDZE	365
	Apt Elev	365

RNAV (GPS) RWY 23

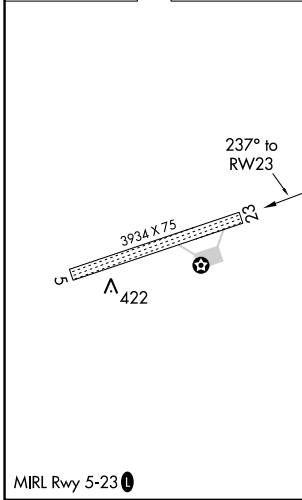
BEAVER (WBQ)(PAWB)

RNP APCH-GPS.	MISSED APPROACH: Climb to 3000 direct ZUSPA and hold.
<p>▼ Rwy 23 helicopter visibility reduction below 3/4 SM NA.</p> <p>▲ NA Use Fort Yukon altimeter setting.</p>	

FYU/PFYU AWOS-3P 125.8	FAIRBANKS RADIO 122.05 122.15	CTAF 122.9
----------------------------------	---	----------------------



ELEV 365	TDZE 365
----------	----------



3000	ZUSPA	CEKNA	DUTKE	4 NM Holding Pattern
↑	✦	✦	✦	✦
RWY 23		2000	237°	057° → 10000 ← 237° 3000
5 NM		6 NM		
CATEGORY	A	B	C	D
LNAV MDA	940-1	575 (600-1)	940-1½ 575 (600-1½)	NA
CIRCLING	940-1	575 (600-1)	940-1½ 575 (600-1½)	NA

AK, 25 JAN 2024 to 21 MAR 2024

AK, 25 JAN 2024 to 21 MAR 2024